

Monster E117

Monster N-Lite 216 Sports Earbuds User Manual

Model: E117

1. INTRODUCTION

1.1 Product Overview

The Monster N-Lite 216 Sports Earbuds are designed for active lifestyles, featuring a secure earhook design, Environmental Noise Cancellation (ENC) for clear calls, and IPX6 waterproofing. They offer up to 48 hours of total playtime with the charging case and deliver stereo bass sound.

1.2 What's in the Box

LONG PLAYTIME AND QUICK CHARGE

With up to 48 hours of battery life, a single charge lasts you the entire week.

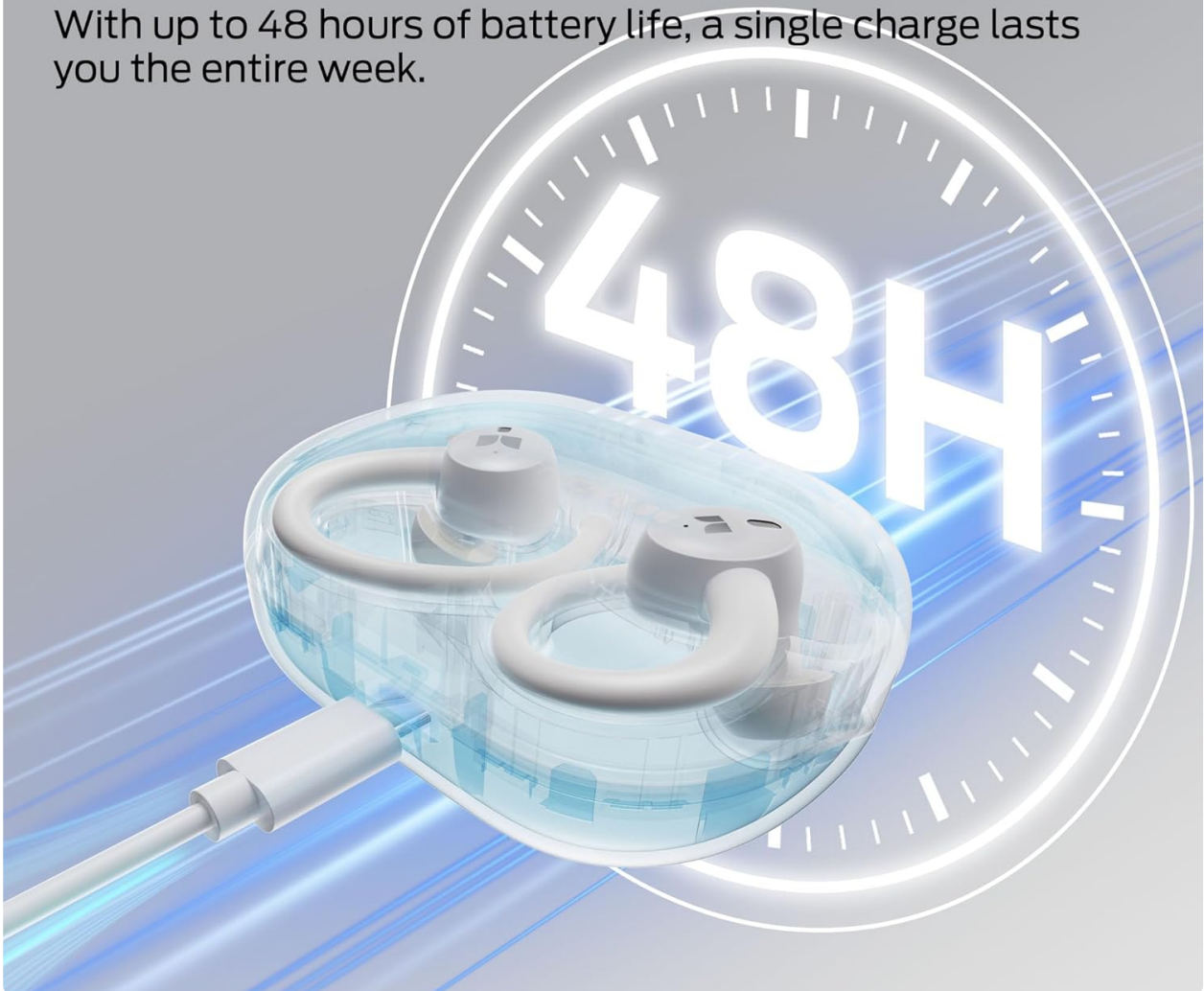


Image: Contents of the Monster N-Lite 216 Earbuds box, including the earbuds, charging case, USB-C cable, and user manual.

- Monster N-Lite 216 Earbuds
- Charging Case
- S/M/L Ear Tips
- USB-C Cable
- Quick Start Guide

2. SETUP

2.1 Charging the Earbuds and Case

Before first use, fully charge the earbuds and charging case. Connect the provided USB-C cable to the charging port on the case and a power source. The LED display on the case will indicate the battery percentage.

Long-Lasting Listening

8Hrs

Playtime per charge

48Hrs

Playtime with charging case

Fast charging ⚡ **10 Mins** = 🎧 **3Hrs** Playtime

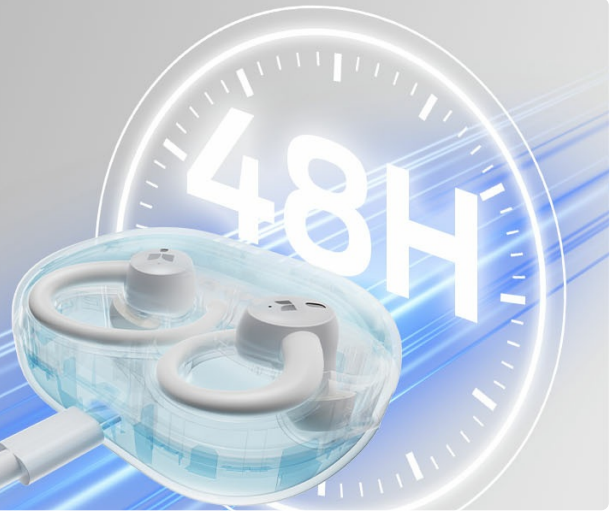


Image: The charging case connected to a USB-C cable, illustrating the charging process and the 48-hour total playtime.

- **Charging Time:** Approximately 1.5 hours for a full charge.
- **Quick Charge:** 5 minutes of charging provides approximately 60 minutes of playtime.
- **Battery Life:** Up to 8 hours on a single charge, and up to 48 hours with the charging case.

2.2 Bluetooth Pairing

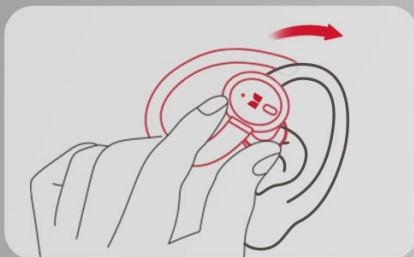
1. Ensure the earbuds are charged.
2. Open the charging case. The earbuds will automatically enter pairing mode.
3. On your device (smartphone, tablet, etc.), enable Bluetooth.
4. Search for "Monster N-Lite 216" in the list of available Bluetooth devices.
5. Select to connect. Once connected, you will hear an audible confirmation.

3. OPERATING INSTRUCTIONS

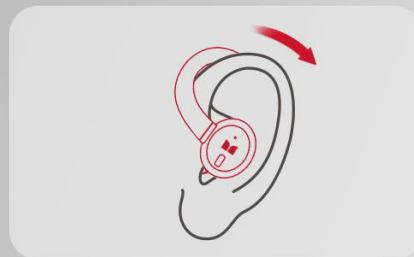
3.1 Wearing the Earbuds

The N-Lite 216 earbuds feature ergonomic earhooks for a secure and comfortable fit, especially during physical activity.

How to Wear



Step 1 Take out the earbud, place it above the ear



Step 2 Rotate it backward along the auricle to the proper position

Image: Step-by-step guide on how to correctly wear the earbuds, demonstrating placement and rotation for a secure fit.

1. Take out an earbud from the charging case.
2. Place the earbud above your ear, ensuring the earhook wraps around the top of your ear.

3. Gently rotate the earbud backward along the auricle until it sits comfortably and securely in your ear canal.

3.2 Touch Controls

The earbuds feature smart touch controls for easy management of music and calls.



Image: Visual representation of the touch control functions on the earbud, including skip tracks, volume adjustment, and answer calls.

Action	Function
Single Tap	Play/Pause Music, Answer/End Call
Double Tap (Left Earbud)	Previous Track
Double Tap (Right Earbud)	Next Track
Triple Tap (Left Earbud)	Volume Down
Triple Tap (Right Earbud)	Volume Up
Long Press (2 seconds)	Reject Call, Activate Voice Assistant

3.3 Call Functions

The built-in ENC noise-cancelling microphones ensure clear calls by reducing background noise.



Image: A user making a phone call with the earbuds, highlighting the clear call quality even in noisy surroundings.

- **Answer/End Call:** Single tap either earbud.
- **Reject Call:** Long press either earbud for 2 seconds.

4. MAINTENANCE

4.1 Cleaning

- Regularly clean the earbuds, especially the ear tips and charging contacts, with a soft, dry, lint-free cloth.
- Do not use harsh chemicals or abrasive materials.

4.2 Storage

- Store the earbuds in their charging case when not in use to protect them and keep them charged.
- Avoid extreme temperatures and direct sunlight.

4.3 Water Resistance

The earbuds are IPX6 waterproof, protecting them from sweat and splashes. They are not designed for submersion in water.



Image: Earbuds with water droplets, signifying their IPX6 water-resistant rating.

5. TROUBLESHOOTING

5.1 Common Issues and Solutions

- **No Sound/Poor Sound Quality:**
 - Ensure earbuds are properly seated in your ears.
 - Check device volume and earbud volume.
 - Reconnect Bluetooth.
 - Clean ear tips and speaker mesh.
- **Earbuds Not Pairing:**
 - Ensure earbuds are charged and in pairing mode.
 - Turn off and on Bluetooth on your device.
 - Forget the device in your Bluetooth settings and re-pair.
 - Ensure no other devices are connected to the earbuds.
- **Charging Issues:**
 - Check the USB-C cable and power adapter.
 - Ensure charging contacts on earbuds and case are clean and dry.

6. SPECIFICATIONS

Feature	Detail
Model Name	E117



Feature	Detail
Connectivity Technology	Bluetooth 6.0
Audio Driver Type	14.2mm Dynamic Driver
Noise Control Features	Environmental Noise Cancellation (ENC)
Water Resistance Level	IPX6 Waterproof
Battery Life (Earbuds)	Up to 8 Hours
Total Playtime (with Case)	Up to 48 Hours
Charging Time	1.5 Hours
Control Type	Touch Control
Material	Silicone
Item Weight	7 ounces (total package)
Ear Placement	In Ear with Earhooks





7. WARRANTY AND SUPPORT

Monster is committed to customer satisfaction. For any inquiries, feedback, or support regarding your Monster N-Lite 216 Sports Earbuds, please contact our professional customer service team. Refer to the warranty information provided in the Quick Start Guide for details on coverage and terms.

For further assistance, please visit the official Monster website or contact their customer support directly.

Related Documents - E117

	<p>Monster N-Lite 216 Bluetooth Headphones Quick Start Guide and Specifications</p> <p>This document provides a quick start guide for the Monster N-Lite 216 Bluetooth headphones. It covers charging, power on/off, pairing, wearing instructions, reset procedures, button operations, LED indicators, important attention points, FCC compliance statements, IC caution, and a hazardous substances table.</p>
	<p>Monster Airmars XKT26 True Wireless Bluetooth Headphones - User Manual</p> <p>Official user manual for Monster Airmars XKT26 true wireless Bluetooth headphones. This guide provides detailed information on product features, specifications, operation, charging, pairing, mode switching, precautions, warnings, hazardous substance information, FCC compliance, and warranty service.</p>

	<p>Monster N-Lite 213 (MH22237) Wireless Earbuds Quick Start Guide</p> <p>Get started with your Monster N-Lite 213 (MH22237) wireless earbuds. This guide covers product overview, charging, pairing, wearing, touch controls, indicator lights, and safety information.</p>
	<p>Monster N-Lite 210 Quick Start Guide & User Manual</p> <p>Concise guide for Monster N-Lite 210 wireless earbuds, covering setup, pairing, usage, and troubleshooting. Learn how to use your Monster N-Lite 210.</p>
	<p>Monster N-Lite 206 Bluetooth Headphones Quick Start Guide</p> <p>A comprehensive guide to setting up and using your Monster N-Lite 206 Bluetooth headphones, including pairing, controls, and troubleshooting.</p>
	<p>Monster N-Lite 203 Airlinks Bluetooth Headphones Quick Start Guide</p> <p>Concise guide to setting up and using Monster N-Lite 203 Airlinks Bluetooth headphones, covering pairing, controls, and features.</p>