



Manuals.plus /

› EAST OAK /

› EAST OAK Cordless Electric Lunch Box (Model HM945) User Manual

EAST OAK HM945

EAST OAK Cordless Electric Lunch Box (Model HM945) User Manual

Model: HM945

INTRODUCTION

Thank you for choosing the EAST OAK Cordless Electric Lunch Box. This device is designed to provide warm meals conveniently, featuring a rechargeable battery, automatic heating, and heat preservation functions. Please read this manual thoroughly before use to ensure safe and optimal operation.

IMPORTANT SAFETY INSTRUCTIONS

- The heated lunch box's memory function is designed for users with consistent meal schedules. Inconsistent use may result in food not being heated on time.
- The electric lunch box has an adjustable temperature range of 170-220°F (76-104°C). This temperature refers to the heating element, not the food directly.
- Allow approximately 2 hours for a single heating cycle to ensure food is fully warmed. Plan accordingly.
- Before each use, verify the battery level. Ensure it has at least 90% battery power for effective heating.
- The inner liner is made of food-grade 304 stainless steel, which contains nickel. Individuals with nickel allergies should avoid using this product.
- For even heating, ensure full contact between the food and the container's bottom. Adding a small amount of water to the food can improve heat distribution.
- To prevent incompatibility issues, always use the original charger and the provided lunch box inner liner.
- Do not immerse the main unit in water or other liquids.
- Keep out of reach of children.

PACKAGE CONTENTS

Carefully unpack the box and ensure all items are present and in good condition. If any items are missing or

damaged, please contact customer support.

- EAST OAK Cordless Electric Lunch Box (Main Unit)
- 1.3L Food-Grade 304 Stainless Steel Inner Container
- Lid for Inner Container
- Removable Tray Divider
- Fork
- Spoon
- Utensil Storage Bag
- Insulated Carry Bag
- Power Adapter (Charger)
- User Manual



Image: All components included in the EAST OAK Cordless Electric Lunch Box package.

PRODUCT FEATURES

- **Cordless & Rechargeable:** Equipped with a rechargeable battery, providing up to 2 hours of continuous heating and 1 hour of heat preservation. Enjoy hot meals without needing a power outlet.
- **Automatic Heating Schedule:** Set your desired meal time, and the lunch box will automatically begin heating 2 hours in advance, ensuring your food is ready when you are.
- **Memory Function:** The device remembers your last settings for current time, meal time, and heating temperature, simplifying daily use for regular schedules.
- **Generous Capacity:** A 1.3L (approximately 5.5 cups) stainless steel container offers ample space for a hearty meal.
- **Multi-Level Temperature Adjustment:** Supports temperature settings from 170°F to 220°F (76°C to 104°C) to suit various food types and preferences.
- **Automatic Keep Warm:** After the heating cycle, the lunch box automatically switches to heat preservation mode to maintain food temperature.
- **Easy to Clean:** The 304 stainless steel food container and its lid are detachable and dishwasher safe for convenient cleaning.
- **Leak-Proof Design:** Engineered to prevent spills and leaks, keeping your bag clean.
- **Complete Tableware Set:** Includes a fork, spoon, utensil storage bag, and an insulated bag for a

comprehensive meal solution.

- **Removable Tray Divider:** Allows for easy separation of different food items within the container.

Battery Powered, Hot Meals Anywhere

EAST OAK Cordless Electric Lunch Box EAST OAK



Image: The 1.3L capacity of the EAST OAK lunch box container compared to a smaller competitor.

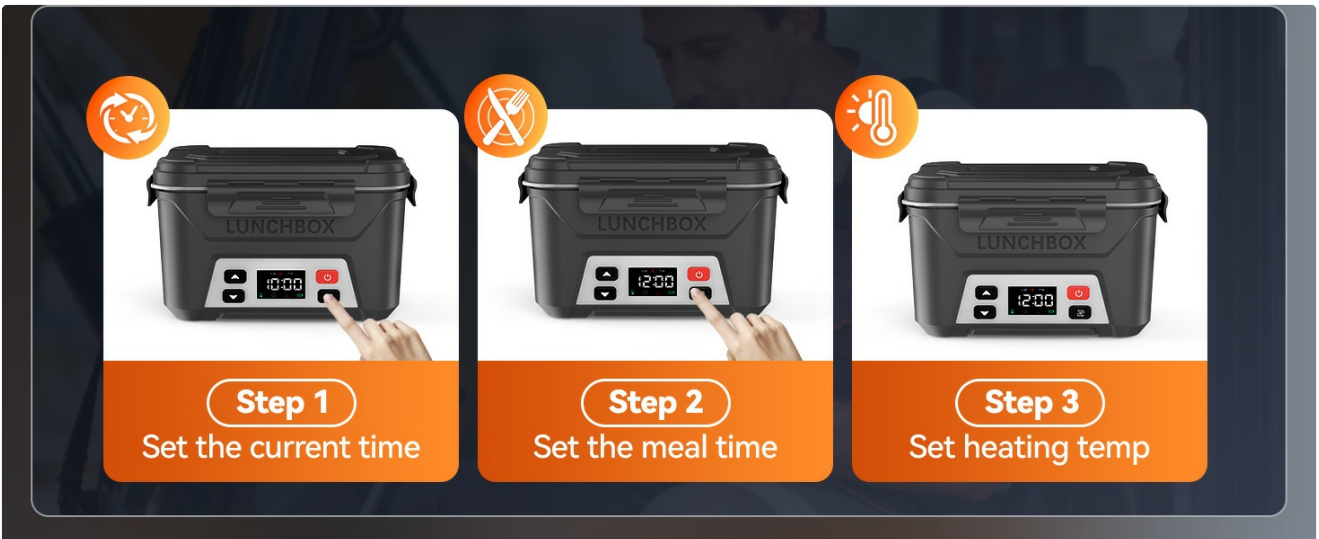


Image: Visual representation of the timer function for scheduled heating.



Image: The memory function retains previous settings for convenience.

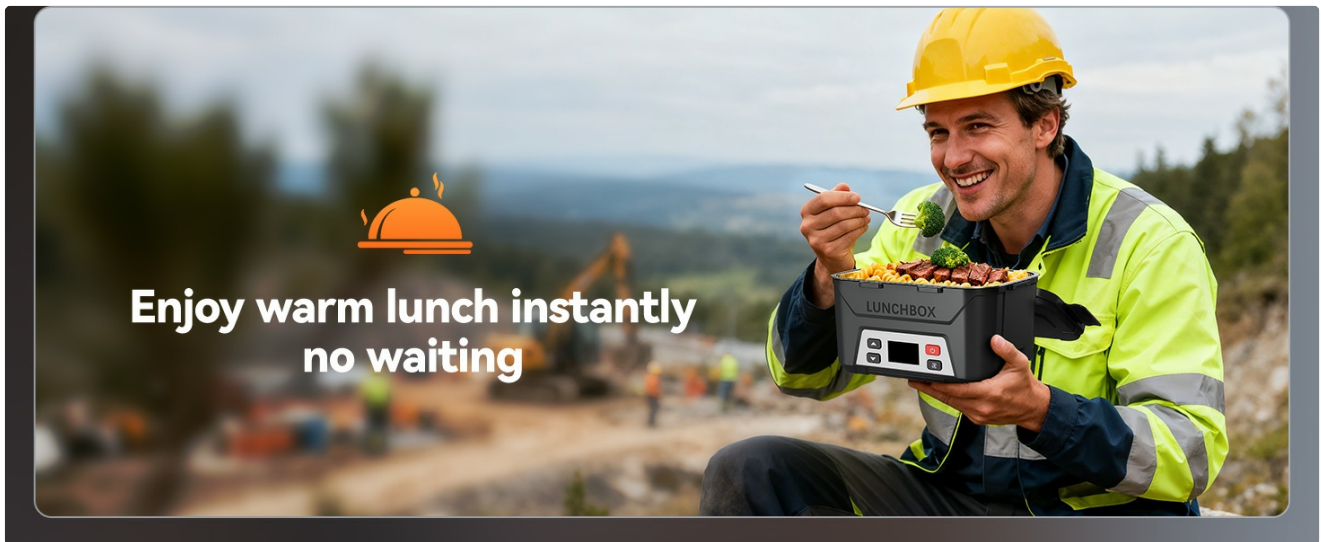


Image: The automatic keep warm feature maintains food temperature after heating.

SETUP

1. Initial Charging

Before first use, fully charge the lunch box battery. Connect the provided power adapter to the charging port on the side of the lunch box and plug it into a standard wall outlet. The battery indicator on the display will show charging status.

- A full charge typically takes several hours.
- Ensure the battery is at least 90% charged for optimal heating performance.

2. Preparing the Lunch Box

1. Wash the stainless steel inner container, its lid, and the tray divider with warm soapy water before first use. Rinse thoroughly and dry.
2. Place the clean stainless steel inner container into the main unit of the lunch box.
3. If desired, insert the removable tray divider into the inner container to separate food items.
4. Place your food into the stainless steel container. Ensure the food makes good contact with the bottom for efficient heating.
5. Secure the lid onto the stainless steel container.
6. Close the main lunch box lid securely.



Image: Battery display showing charging status.

OPERATING INSTRUCTIONS

1. Setting Time and Temperature (Memory Function)

The lunch box features a memory function, retaining your last settings for convenience, especially for users with regular schedules.

1. **Set Current Time:** Press the 'Time' button (often represented by a clock icon) to enter time setting mode. Use the up/down arrows to adjust the current hour and minute. Press 'Time' again to confirm.
2. **Set Meal Time:** Press the 'Meal' button (often represented by a fork/spoon icon). Use the up/down arrows to set your desired meal time. This is the time you want your food to be ready. Press 'Meal' again to confirm.
3. **Set Heating Temperature:** Press the 'Temp' button (often represented by a thermometer icon). Use the up/down arrows to select your preferred heating temperature (170-220°F). Press 'Temp' again to confirm.

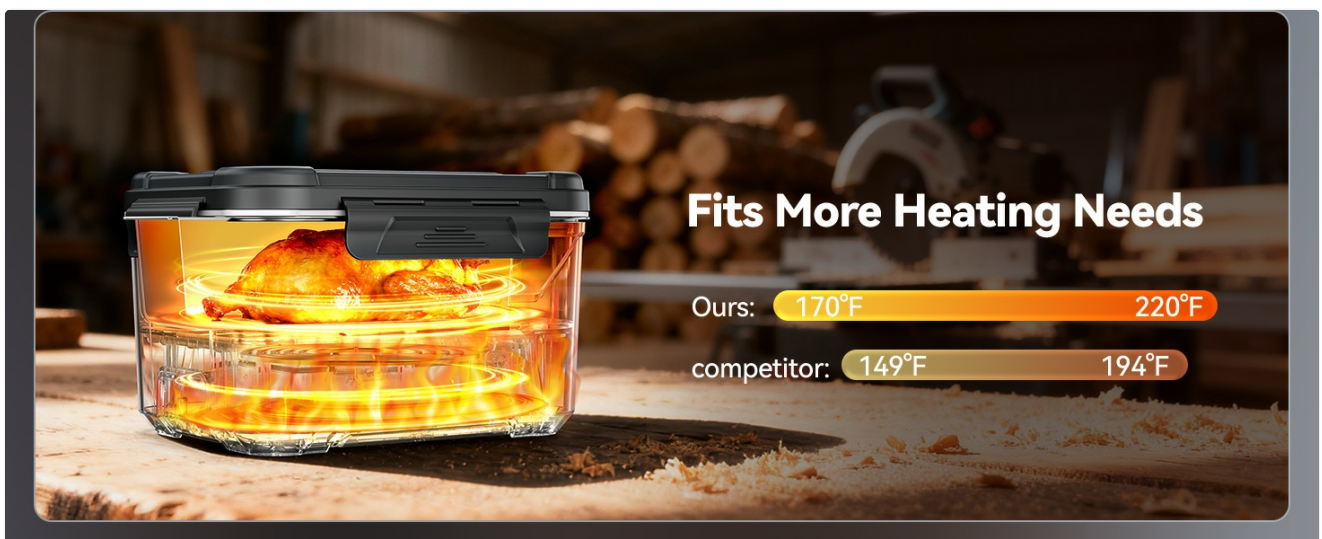


Image: Steps for setting current time, meal time, and heating temperature.

2. Automatic Heating Mode

Once the current time, meal time, and heating temperature are set, the lunch box will automatically calculate when to start heating. It will begin heating approximately 2 hours before your set meal time.

- Ensure the lunch box is powered on (press the power button) for the automatic schedule to activate.

- The display will show the countdown to your meal time.

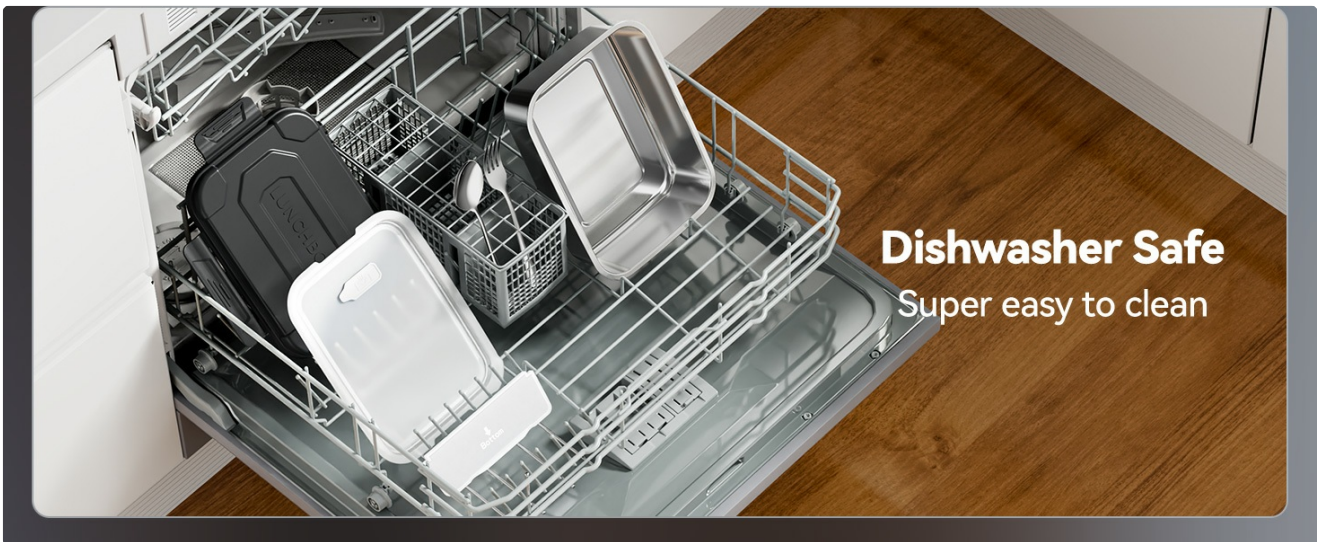


Image: Automatic heating activates based on your set schedule.

3. Immediate Heating Mode

If you need to heat your food immediately, bypass the scheduled heating by pressing the 'Power' button to turn on the device. The lunch box will begin heating instantly at the last set temperature.

- Heating duration is approximately 2 hours.
- For dishes without broth, adding a small amount of drinking water can help with cooking and even heating.

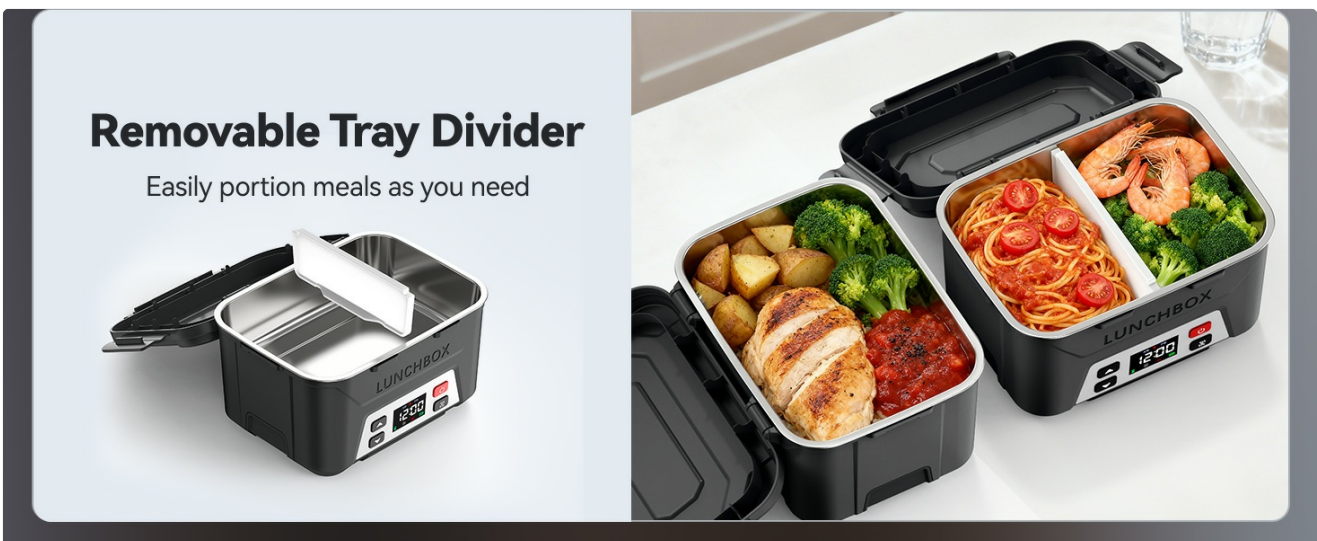


Image: Immediate heating mode for instant warm meals.

4. Heat Preservation

After the heating cycle is complete, the lunch box will automatically switch to heat preservation mode for up to 1 hour, keeping your food warm until you are ready to eat.

MAINTENANCE AND CLEANING

Proper maintenance ensures the longevity and hygiene of your EAST OAK Cordless Electric Lunch Box.

- **Detachable Components:** The 304 stainless steel food container, its lid, and the tray divider are fully detachable from the main unit.

- **Dishwasher Safe:** The stainless steel inner container, its lid, and the tray divider are dishwasher safe. For best results, place them on the top rack.
- **Hand Washing:** Alternatively, wash these components with warm soapy water using a soft sponge. Rinse thoroughly and dry completely before reassembly.
- **Main Unit Cleaning:** Wipe the exterior of the main lunch box unit with a damp cloth. Do not immerse the main unit in water or any other liquid. Ensure the charging port and control panel remain dry.
- **Storage:** Store the lunch box in a clean, dry place when not in use.



Image: Detachable components are dishwasher safe for easy cleaning.

TROUBLESHOOTING

If you encounter issues with your lunch box, refer to the following table for common problems and solutions.

Problem	Possible Cause	Solution
Lunch box not heating.	Low battery; Not powered on; Incorrect settings.	Ensure battery is charged above 90%. Press the power button. Verify meal time and temperature settings.
Food not heating evenly.	Insufficient contact with heating element; Food too dry.	Ensure food is spread evenly and makes contact with the bottom. Add a small amount of water or broth.
Heating takes too long.	Low battery; Food quantity too large; Initial food temperature too low.	Ensure battery is fully charged. Reduce food quantity if necessary. Allow the full 2-hour heating cycle.
Display not working.	Low battery; Device off.	Charge the lunch box. Press the power button to turn on the device.
Leakage from lunch box.	Inner container lid not properly sealed; Main unit lid not properly closed.	Ensure the inner container lid is securely fastened. Close the main lunch box lid firmly with the latches.

SPECIFICATIONS

Feature	Detail
Model Number	HM945
Brand	EAST OAK
Capacity	1.3 Liters (approx. 5.5 Cups)
Material	Steel (304 Stainless Steel inner container)
Color	Black
Heating Temperature Range	170-220°F (76-104°C)
Heating Duration	Approx. 2 hours (continuous)
Heat Preservation Duration	Approx. 1 hour (after heating)
Battery Type	1 Lithium Ion battery (included)
Product Care	Dishwasher Safe (inner container, lid, divider)
Item Weight	33.2 pounds (Note: This weight seems unusually high for a lunchbox and might be a data error. Please refer to product packaging for accurate weight.)
UPC	850079821095

WARRANTY AND SUPPORT

EAST OAK products are manufactured with quality and performance in mind. For specific warranty information regarding your Cordless Electric Lunch Box, please refer to the warranty card included in your product packaging or visit the official EAST OAK website.

If you require technical assistance, have questions about operation, or need to report a defect, please contact EAST OAK customer support through their official channels. Keep your purchase receipt and model number (HM945) handy for faster service.

You can find more information and contact details on the EAST OAK Store on Amazon.