



[Manuals.plus](#) /

> [GEARPASS](#) /

> GEARPASS Propane Tankless Water Heater (Model JSQ32) - Instruction Manual

## GEARPASS JSQ32

# GEARPASS Propane Tankless Water Heater

Model: JSQ32 (4.3 GPM, 130,000 BTU)

## 1. INTRODUCTION

---

This manual provides essential information for the safe installation, operation, and maintenance of your GEARPASS Propane Tankless Water Heater, Model JSQ32. This indoor unit is designed to provide instant hot water with a flow rate of up to 4.3 GPM and a maximum heat output of 130,000 BTU/hour. Please read this manual thoroughly before installation and use, and retain it for future reference.

## 2. SAFETY INFORMATION

---

**WARNING: Improper installation, adjustment, alteration, service, or maintenance can cause property damage, injury, or death. Read the installation, operating, and maintenance instructions thoroughly before installing or servicing this equipment.**

- This appliance is designed for Propane (LPG) gas only. Do not attempt to use with Natural Gas or any other fuel.
- Ensure proper ventilation and exhaust installation as required by local codes and this manual. Carbon monoxide poisoning can be fatal.
- Do not store or use gasoline or other flammable vapors and liquids in the vicinity of this or any other appliance.
- Keep the area around the water heater clear and free from combustible materials, corrosive chemicals, and flammable liquids.
- Always turn off the gas supply and disconnect power before performing any maintenance or service.
- This unit features multiple safety protections including Dry Burn Protection, Flame Failure Protection, Overheat Protection, Water Temperature Monitoring, Auto Shut-Off, and Low Water Pressure Start-Up.

# SAFETY GUARD & SMART CONTROL

Reliable Hot Water On Demand



Image showing the safety features of the water heater, including Dry Burn Protection, Flame Failure Protection, Overheat Protection, Water Temperature Monitoring, Auto Shut-Off, and Low Water Pressure Start-Up.

## 3. PRODUCT FEATURES

- **Tankless Design:** Activates only when hot water is needed, reducing energy consumption.
- **High Efficiency:** 130,000 BTU/hour heat output, supporting 3-4 water outlets simultaneously.
- **Durable Construction:** Stainless steel housing and oxygen-free copper water tank for heat resistance and longevity.
- **Smart Digital Display:** LED display and touch control panel for real-time temperature monitoring and adjustment (35°C–65°C / 95°F–149°F).
- **Compact Installation:** Space-saving design suitable for homes, RVs, and cabins.
- **Stable Temperature:** Advanced technology ensures consistent water temperature.



The GEARPASS Propane Tankless Water Heater, showcasing its 130,000 BTU max heat output, 4.3 GPM water flow rate, and 35°C-65°C temperature range.

# SMART TOUCH CONTROL

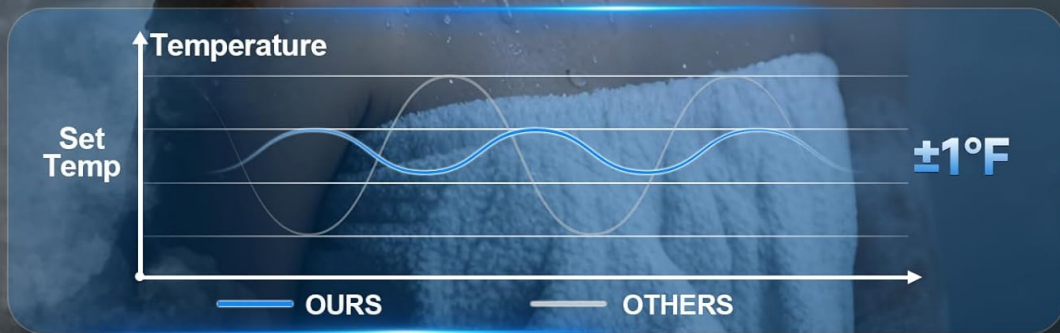
Set your ideal temperature with one touch



Close-up of the smart touch control panel, allowing users to set their desired water temperature with ease.

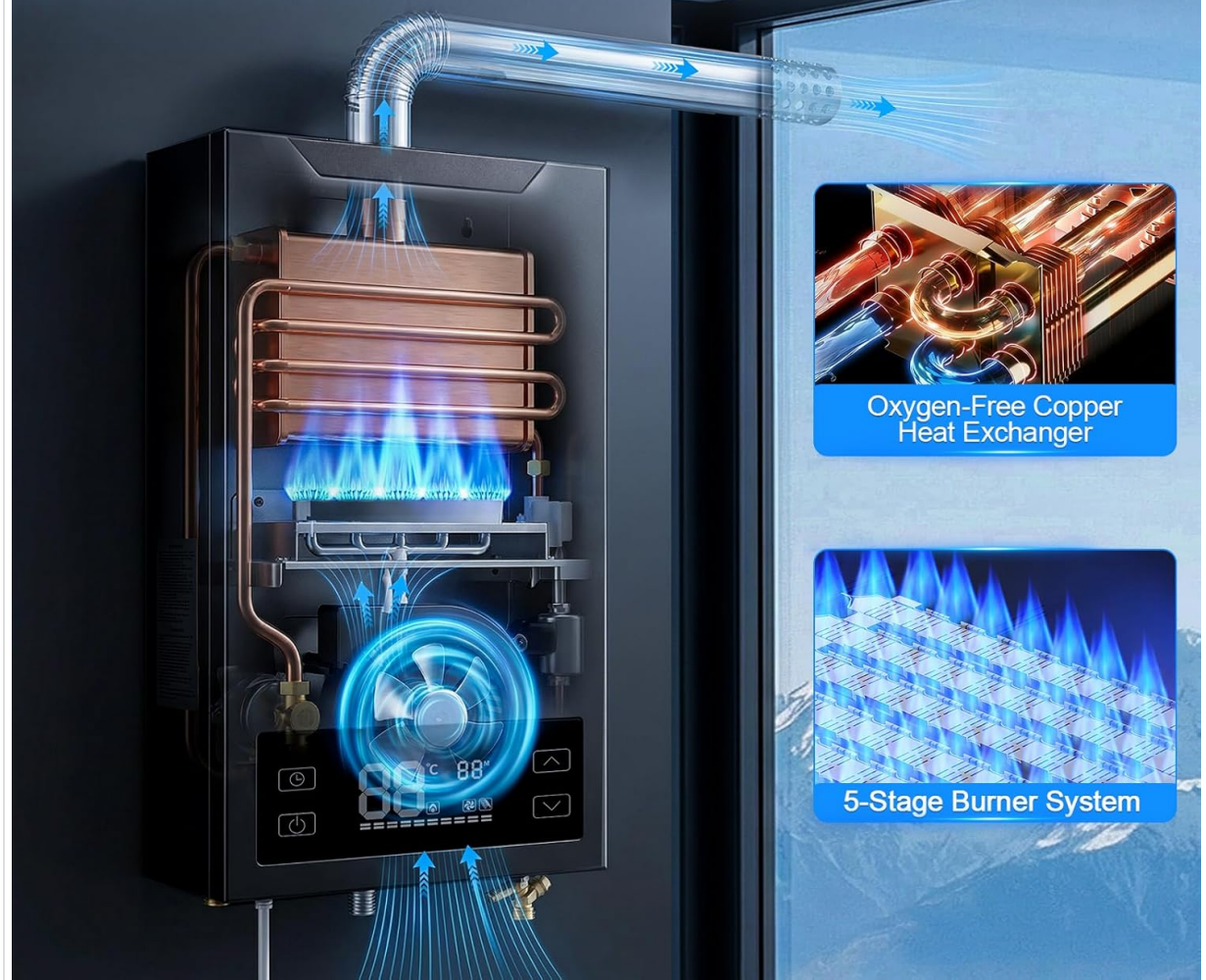
# STABLE TEMPERATURE

Consistent Warmth for Every Shower



A graph demonstrating the stable temperature output of the water heater, ensuring consistent warmth.

# EFFICIENT HEATING TECHNOLOGY



An internal diagram illustrating the efficient heating technology, including the oxygen-free copper heat exchanger and 5-stage burner system.

# MULTI-POINT HOT WATER

Continuous Comfort Across Multiple Outlets



A diagram illustrating the water heater's capability to provide continuous hot water to multiple outlets simultaneously, such as a bathroom, kitchen, and laundry room.

## 4. PACKAGE CONTENTS

Verify that all components are present before beginning installation:

- GEARPASS Propane Tankless Water Heater Unit
- Horizontal Vent Pipe (2.36 inches)
- Shower Head and Hose Kit
- Gas Regulator and Hose
- Mounting Hardware
- User Manual

# PRODUCT SPECIFICATION

**Type of Gas: Propane / LPG**

**Rated Voltage: AC 110V / 60Hz**

**Water Pressure Range:  
0,02 ~ 0,8 MPa**

**Gas Pressure: 2800 Pa**

**Temp. Range:  
35°C–65 °C (95°F–149 °F)**

## Accessory list:



Image displaying the water heater unit and its included accessories, such as the shower head, hose, gas regulator, and vent pipe.

## 5. SPECIFICATIONS

Specification	Value
Model Number	JSQ32
Gas Type	Propane (LPG)
Max Heat Output	130,000 BTU/hour
Water Flow Rate	Up to 4.3 GPM (16L)
Operating Water Pressure	2.9–116 PSI (0.02–0.8 MPa)
Temperature Range	35°C–65°C (95°F–149°F)
Rated Voltage	AC 110V / 60Hz
Gas Pressure	2800 Pa

Specification	Value
Installation Type	Wall-mounted
Product Dimensions (W x H)	35 cm x 59 cm (13.78 in x 23.23 in)
Vent Pipe Diameter	2.36 inches
Water/Gas Connections	G 1/2"

## 6. SETUP AND INSTALLATION

---

Installation must be performed by a qualified professional in accordance with all local codes and regulations. Ensure the installation location is well-ventilated and protected from freezing temperatures.

### 6.1 Choosing a Location

- Install indoors only.
- Ensure adequate clearance around the unit for maintenance and proper airflow.
- Avoid areas with high humidity or corrosive chemicals.
- The unit must be installed on a solid, vertical surface capable of supporting its weight.

### 6.2 Mounting the Unit

1. Mark the mounting points on the wall using the provided template or by measuring the unit's mounting brackets.
2. Drill appropriate holes and insert wall anchors if necessary.
3. Securely mount the water heater to the wall using the provided screws.

### 6.3 Water Connections

1. Connect the cold water inlet (G 1/2") to your main cold water supply.
2. Connect the hot water outlet (G 1/2") to your hot water distribution system.
3. Ensure all connections are tight and leak-free. Use thread sealant where appropriate.

### 6.4 Gas Connection

1. Connect the propane gas inlet (G 1/2") to your propane supply using the provided gas regulator and hose.
2. Ensure all gas connections are tight and test for leaks using a non-corrosive leak detection solution.

### 6.5 Venting

1. Install the 2.36-inch horizontal vent pipe according to local codes and manufacturer instructions.
2. Ensure the vent pipe is properly sealed and extends to the outside atmosphere, away from windows or air intakes.

# COMPACT & FLEXIBLE INSTALL

Fits easily in corners and small spaces



Diagram illustrating the compact dimensions of the water heater and the locations of the water inlet, water outlet, and gas inlet (all G 1/2").

## 7. OPERATING INSTRUCTIONS

The GEARPASS Tankless Water Heater features a user-friendly LED digital display and smart touch controls.

### 7.1 Initial Startup

1. Ensure all water and gas connections are secure and leak-free.
2. Open the cold water supply valve to the unit.
3. Open a hot water faucet in your home to purge air from the water lines. Allow water to flow for a few minutes until it runs smoothly.
4. Close the hot water faucet.
5. Turn on the propane gas supply.
6. Plug the unit into a standard 110V AC outlet. The LED display should illuminate.

### 7.2 Setting Water Temperature

1. On the LED digital display, use the **Up** and **Down** arrow buttons to adjust the desired water

temperature.

2. The temperature can be set between 35°C (95°F) and 65°C (149°F).
3. Once a hot water faucet is opened, the unit will automatically ignite and begin heating water to the set temperature.

### 7.3 Shutting Down

1. To temporarily stop hot water flow, close all hot water faucets. The unit will enter standby mode.
2. For extended periods of non-use or maintenance, turn off the propane gas supply and unplug the unit from the power outlet.

## 8. MAINTENANCE

---

Regular maintenance ensures optimal performance and longevity of your tankless water heater.

### 8.1 Annual Flushing

It is recommended to flush the unit annually to remove mineral buildup, especially in areas with hard water.

This process typically involves:

- Shutting off power and gas to the unit.
- Closing water inlet and outlet valves.
- Connecting a descaling pump and solution to the water lines.
- Circulating the descaling solution through the unit for a specified period.
- Flushing with fresh water and reconnecting the unit.

### 8.2 Cleaning the Exterior

Wipe the exterior of the unit with a soft, damp cloth. Do not use abrasive cleaners or solvents.

### 8.3 Inspecting Venting

Periodically inspect the vent pipe for any obstructions, damage, or signs of leakage. Ensure it remains clear and properly sealed.

## 9. TROUBLESHOOTING

---

If you encounter issues with your water heater, refer to the following common problems and solutions:

Problem	Possible Cause	Solution
No hot water / Unit not igniting	No gas supply Low water pressure Power supply issue Flame sensor dirty/faulty	Check propane tank and gas valve Ensure water pressure is within 2.9-116 PSI Check power connection and circuit breaker Contact qualified technician
Water not hot enough	Temperature setting too low Excessive water flow Mineral buildup	Increase temperature setting on display Reduce water flow at faucet Perform descaling flush

<b>Problem</b>	<b>Possible Cause</b>	<b>Solution</b>
Unit cycles on and off rapidly	Insufficient water flow Overheating protection activated	Ensure adequate water flow Check for blockages in water lines Verify proper ventilation
Error code on display	Specific system fault	Refer to the specific error code in the full manual (if available) or contact customer support.

For issues not listed here or if solutions do not resolve the problem, please contact a qualified service technician or GEARPASS customer support.

## **10. WARRANTY AND SUPPORT**

---

For warranty information, technical support, or service inquiries, please refer to the warranty card included with your product or visit the official GEARPASS website. Keep your purchase receipt as proof of purchase for warranty claims.