



[Manuals.plus](#) /

› [ANSTEN](#) /

› ANSTEN A118 Open Ear Bluetooth Headphones User Manual

ANSTEN A118

ANSTEN A118 Open Ear Bluetooth Headphones User Manual

Model: A118 | Brand: ANSTEN

INTRODUCTION

Thank you for choosing the ANSTEN A118 Open Ear Bluetooth Headphones. This manual provides detailed instructions for setting up, operating, and maintaining your new headphones. Please read it carefully before use to ensure optimal performance and longevity of your device.



Image: ANSTEN A18 Open Ear Bluetooth Headphones and charging case.

WHAT'S IN THE BOX

Verify that all items are present in your package:

- 2 x Clip-on Earbuds
- 1 x Wireless Charging Case
- 1 x Type-C Charging Cable
- 1 x User Manual

Incomparable comfort & secure hold

Unique C-shaped safety bar and skin-friendly silicone material

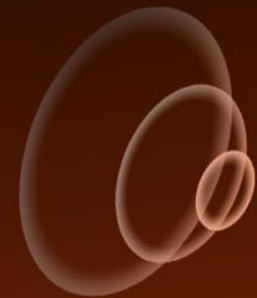
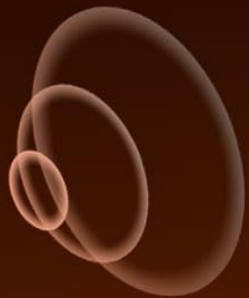
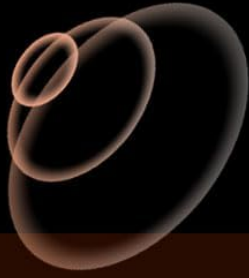


Image: The ANSTEN A18 headphones, charging case, and accessories included in the package.

PRODUCT OVERVIEW

The ANSTEN A18 headphones feature an innovative open-ear design for comfort and situational awareness, combined with advanced audio technology.

Key Features:

- **Open-Ear Clip Design:** Ergonomic, ultralight (5.4g), and hypoallergenic for extended comfort without ear canal pressure.
- **3D Audio & Clear Calls:** 13mm high-fidelity drivers (120dB) for immersive stereo sound. Dual ENC microphones (-42dB) ensure clear voice isolation in noisy environments.
- **Extended Battery Life & Fast Charging:** Up to 5 hours of continuous listening, 80 hours standby with the 280mAh USB-C charging case. Full charge in 1.5 hours.
- **Bluetooth 5.4 & Responsive Touch Control:** Stable connection up to 15 meters with ultra-low latency. Intuitive touch controls with audio feedback.
- **IPX5 Water Resistance:** Sweat-proof, rain-proof, and splash-resistant, ideal for sports and outdoor activities.



Image: Man wearing ANSTEN A118 headphones, highlighting the comfortable and secure open-ear clip design.



Image: Exploded view of the 13mm audio driver, illustrating the components for impressive sound.

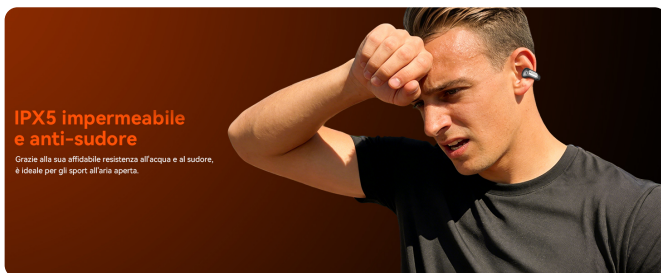


Image: A man exercising, showing the IPX5 waterproof rating and resistance to sweat and rain.



Image: The headphones and charging case, illustrating the 5 hours of playback and 80 hours of standby time.

SETUP

1. Initial Charging

Before first use, fully charge the headphones and the charging case. Connect the provided Type-C charging cable to the charging case and a USB power source. The indicator lights on the case will show charging status.

IPX5 Waterproof Rating

Sweat-proof and rainproof, effectively resisting daily rain and sweat.

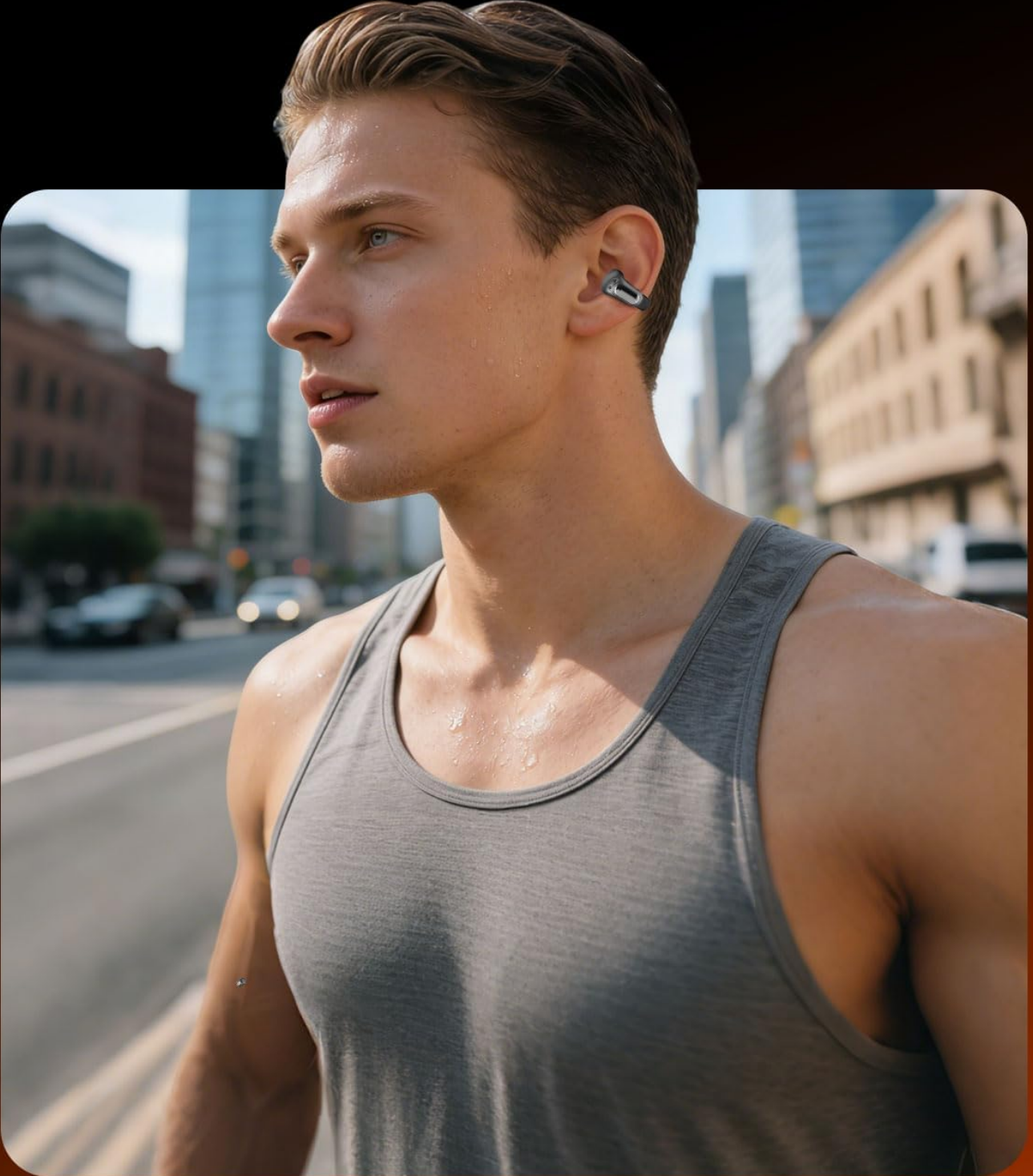
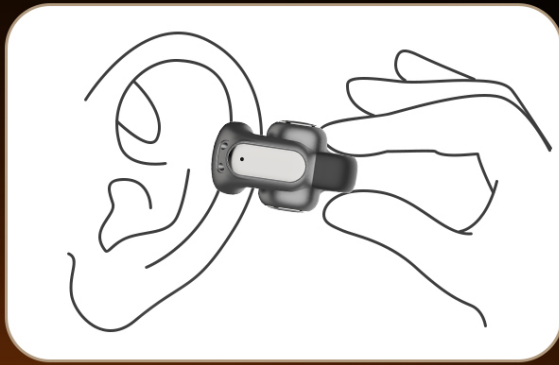


Image: The ANSTEN A118 charging case connected via a USB-C cable for charging.

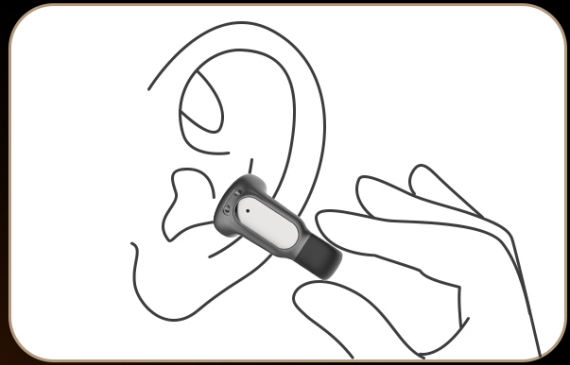
2. Wearing the Headphones

The ANSTEN A118 headphones feature an open-ear clip design. Gently clip each earbud onto the thinnest part of your ear. Adjust them to align with your ear canal for optimal audio performance and a secure fit.

Consigli per l'uso



Fissare gli auricolari alla parte più sottile dell'orecchio.



Regolare i tappi auricolari in modo che siano allineati con il condotto uditivo per ottenere prestazioni audio ottimali.

Image: Diagrams illustrating the correct way to clip and adjust the earbuds on the ear.

OPERATING INSTRUCTIONS

1. Power On/Off

- **Power On:** Open the charging case, and the earbuds will automatically power on. Alternatively, press and hold the touch control area on each earbud for 2 seconds.
- **Power Off:** Place the earbuds back into the charging case and close the lid. They will automatically power off and begin charging. Alternatively, disconnect them from your device, and they will power off after a few minutes of inactivity.

2. Bluetooth Pairing

1. Ensure the earbuds are charged and powered on.
2. Open the charging case. The earbuds will enter pairing mode, indicated by a flashing LED light (refer to product for specific light patterns).
3. On your device (smartphone, tablet, computer), enable Bluetooth.
4. Search for "ANSTEN A118" in the list of available Bluetooth devices.
5. Select "ANSTEN A118" to connect. Once connected, the LED indicator will stop flashing, and you will hear a confirmation tone.

The ANSTEN A118 supports multipoint connection, allowing seamless switching between connected devices like your smartphone and tablet.

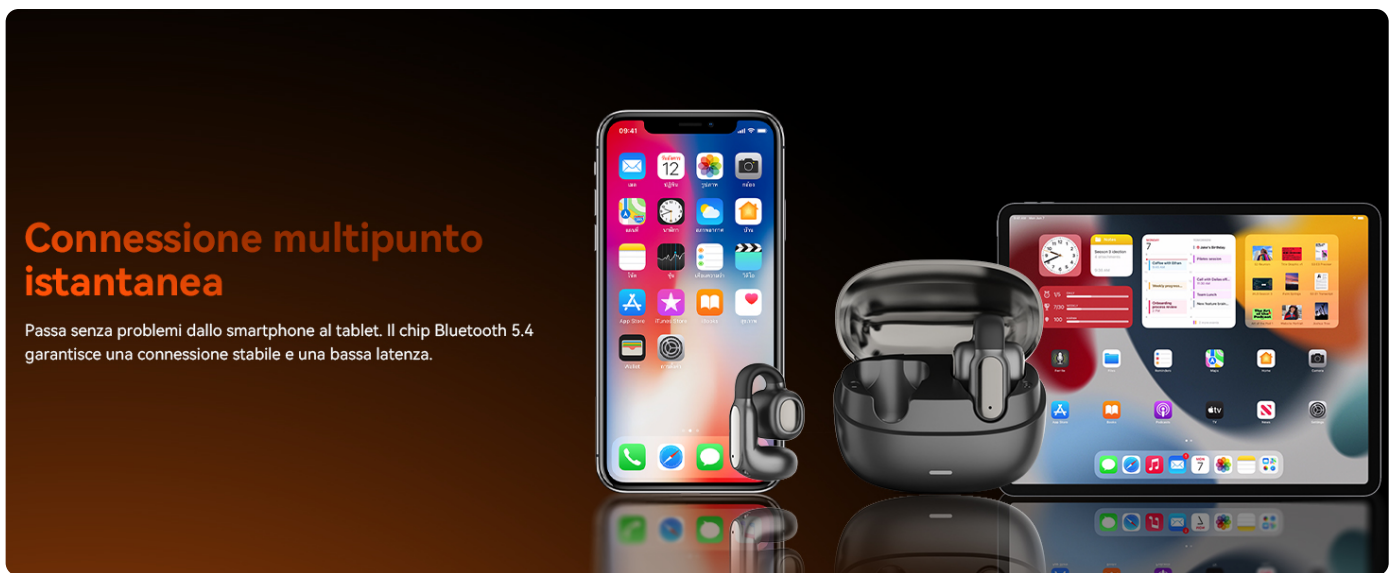


Image: The ANSTEN A118 headphones demonstrating instant multipoint connection with a smartphone and a tablet.

3. Touch Controls

The earbuds feature sensitive touch controls. A sound feedback confirms each touch, minimizing accidental activations.

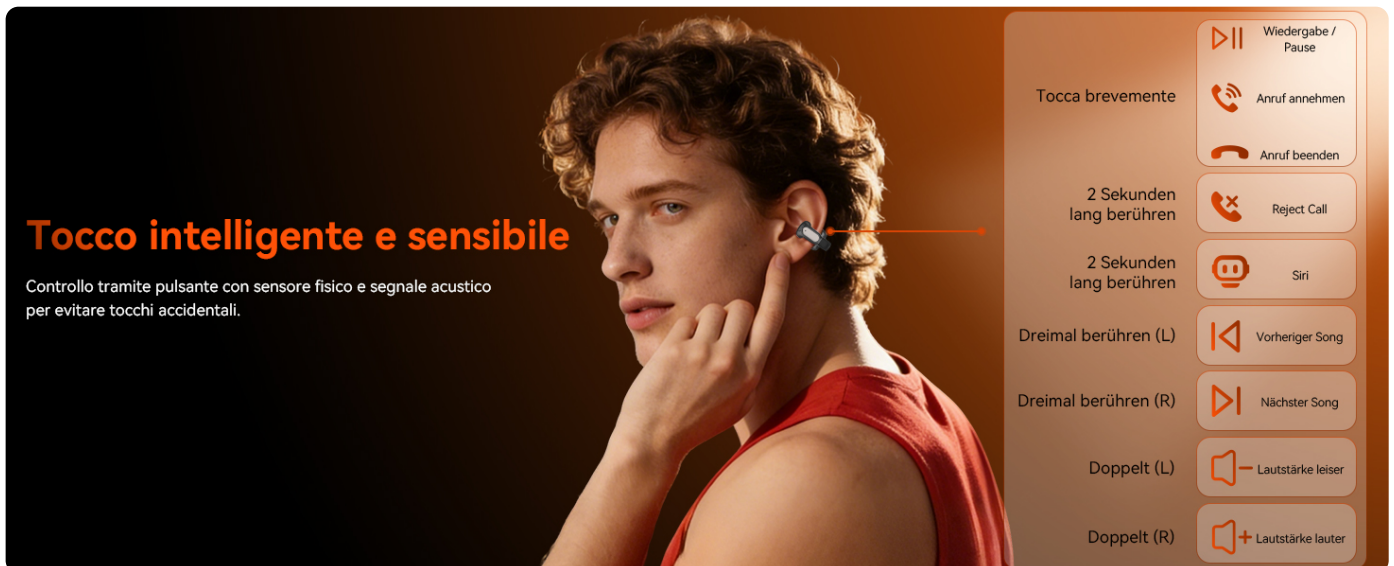


Image: Visual guide for ANSTEN A118 touch controls, showing functions like play/pause, answer/end call, reject call, voice assistant, previous/next song, and volume adjustment.

- **Play/Pause:** Single tap on either earbud.
- **Answer Call:** Single tap on either earbud.
- **End Call:** Single tap on either earbud.
- **Reject Call:** Press and hold either earbud for 2 seconds.
- **Voice Assistant (Siri/Google Assistant):** Press and hold either earbud for 2 seconds (after rejecting call function).
- **Previous Song:** Triple tap on the left earbud.
- **Next Song:** Triple tap on the right earbud.
- **Volume Down:** Double tap on the left earbud.
- **Volume Up:** Double tap on the right earbud.

4. Charging the Earbuds and Case

- **Earbuds:** Place the earbuds into the charging case. They will automatically charge.
- **Charging Case:** Connect the Type-C cable to the charging port on the case and a power adapter (not included).

The case's LED indicators will show the charging status.

MAINTENANCE

- **Cleaning:** Use a soft, dry cloth to clean the earbuds and charging case. Do not use abrasive cleaners or immerse in water.
- **Storage:** Store the headphones in their charging case when not in use to protect them and keep them charged.
- **Water Resistance:** While IPX5 rated for sweat and splashes, avoid submerging the headphones in water or exposing them to heavy rain for prolonged periods. Ensure the charging port is dry before charging.
- **Battery Care:** To preserve battery life, avoid fully discharging the headphones frequently. Charge them regularly, even if not used for extended periods.

TROUBLESHOOTING

No Sound or Intermittent Connection:

- Ensure both earbuds are charged.
- Check if Bluetooth is enabled on your device and "ANSTEN A118" is selected.
- Move closer to your device to ensure you are within the 15-meter Bluetooth range.
- Try unpairing and re-pairing the headphones with your device.
- Restart your audio source device.

Earbuds Not Charging:

- Ensure the charging case is charged.
- Verify that the earbuds are correctly seated in the charging case.
- Check the Type-C charging cable and adapter for damage and ensure they are properly connected.

Touch Controls Not Responding:

- Ensure your fingers are clean and dry.
- Try restarting the earbuds by placing them in the case and taking them out again.

Call Quality Issues (ENC Noise Reduction):

- Ensure the microphones are not obstructed.
- Move to a quieter environment if possible.
- Check your device's call volume settings.

KI-ENC

99%

Efficace soppressione del rumore di fondo

99%

Qualità delle chiamate HD

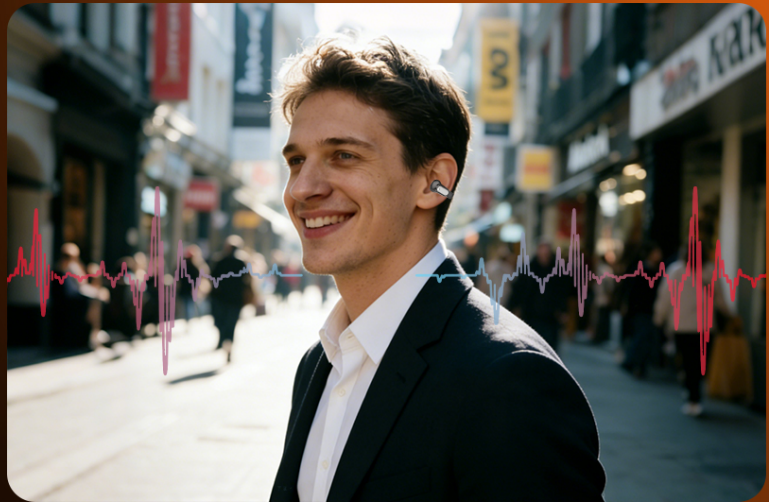


Image: A man in a busy city street, demonstrating the effectiveness of ENC noise reduction for clear calls.

SPECIFICATIONS

Brand	ANSTEN
Model Name	A118
Color	Black
Ear Placement	Open-ear (External to ear)
Form Factor	Open-ear
Noise Control	Environmental Noise Cancellation (ENC)
Sensitivity	120 dB
Connectivity Technology	Bluetooth 5.4
Bluetooth Range	10 Meters
Charging Case Battery Capacity	280 mAh
Average Battery Life (Case)	80 Hours
Charging Time	1.5 Hours
Audio Driver Type	Dynamic Driver
Frequency Range	20 Hz - 20,000 Hz
Material	Plastic
Water Resistance Level	IPX5 (Sweatproof, Rainproof)
Control Type	Touch Control
Recommended Uses	Calls, Cycling, Running, Exercise
Compatible Devices	Mobile phones and computers

WARRANTY & SUPPORT

The ANSTEN A118 headphones come with a **2-year warranty** from the date of purchase. This warranty covers manufacturing defects and material faults under normal use.

For warranty claims, technical support, or any inquiries, please contact ANSTEN customer service through the retailer where you purchased the product or visit the official ANSTEN website for contact information.

Please retain your proof of purchase for warranty purposes.

