

Manuals+

[Q & A](#) | [Deep Search](#) | [Upload](#)

manuals.plus /

› [Rimoody](#) /

› [Rimoody 6G+128G 8 Core Wireless Carplay Android Car Radio User Manual for Peugeot 508 \(2011-2018\)](#)

Rimoody B0FT29CDZX

Rimoody 6G+128G 8 Core Wireless Carplay Android Car Radio User Manual

Model: B0FT29CDZX | For Peugeot 508 (2011-2018)

1. INTRODUCTION

This manual provides detailed instructions for the installation, operation, and maintenance of your Rimoody 6G+128G 8 Core Wireless Carplay Android Car Radio. Please read this manual thoroughly before installation and use to ensure proper function and to prevent damage. This unit is specifically designed for Peugeot 508 models manufactured between 2011 and 2018.

2. PRODUCT OVERVIEW AND FEATURES

The Rimoody Android Car Radio is an advanced multimedia system featuring a 9-inch IPS capacitive touchscreen. It offers a comprehensive suite of functionalities to enhance your driving experience.

Key Features:

- **Operating System:** Android with 6GB RAM + 128GB ROM for smooth performance.
- **Display:** 9-inch IPS capacitive touchscreen with 1280 x 720 resolution.
- **Processor:** 8-core processor for fast operation.
- **Connectivity:** Built-in WiFi, Bluetooth 5.0, Dual USB ports.
- **Smartphone Integration:** Wireless/Wired Carplay and Android Auto, Android/iOS Mirror Link.
- **Navigation:** Built-in GPS with support for offline maps (requires internet for initial download) and online navigation via Google Maps or other apps.
- **Audio:** FM/AM/RDS radio tuner with 30 preset stations, DSP EQ for customizable sound.
- **Safety & Convenience:** Supports AHD/CVBS reverse input for rear view camera, steering wheel control, split screen function, external microphone support.
- **Optional Features:** DAB+, OBD, DVR, Intelligent Voice Control, Network Radio, Global Weather Display (adapters/modules not included).

- **Canbus Integration:** Syncs real-time vehicle information.

Wireless/Wired Carplay & Android Auto & Mirror Link



Image: Wireless/Wired Carplay, Android Auto, and Mirror Link capabilities. This image illustrates how the car radio integrates with smartphones for navigation, music, and communication, showing icons for phone calls, music playback, and navigation apps.

GPS Navigation & WIFI

8 Core

6G+128G

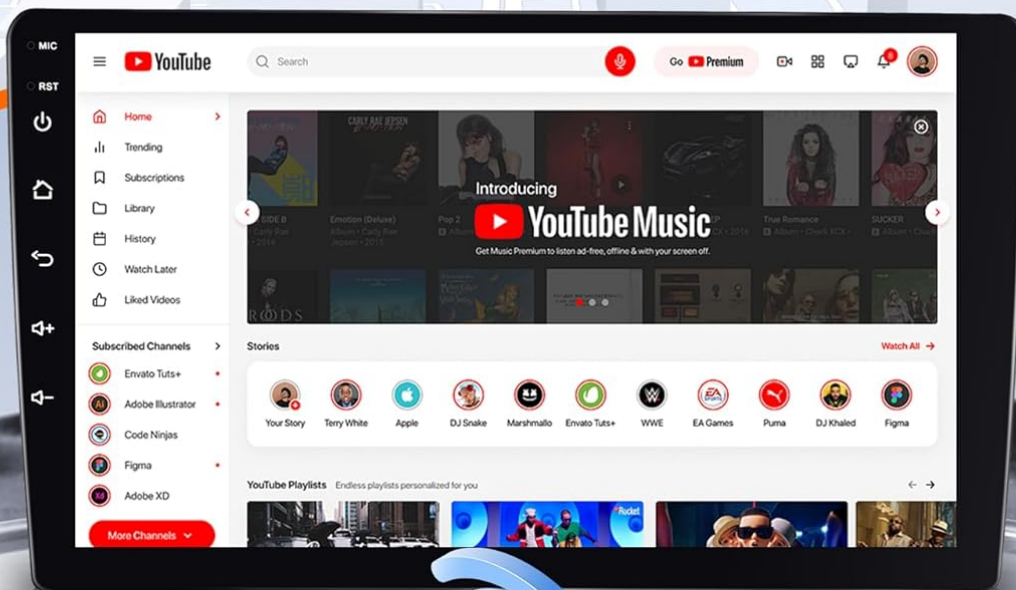
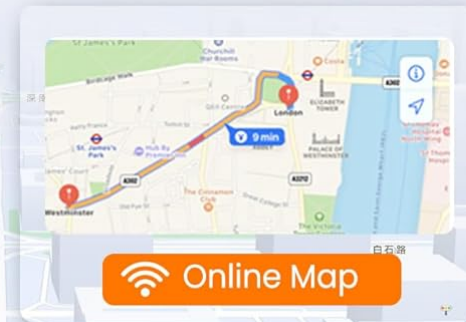
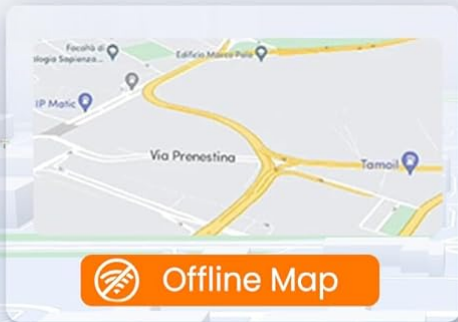
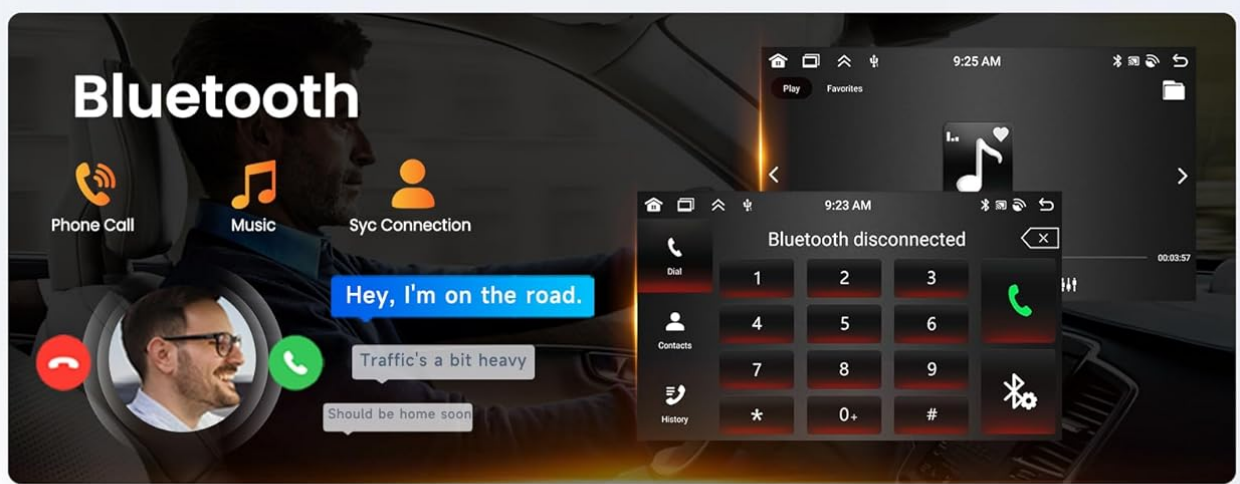


Image: GPS Navigation and WiFi. The image displays the car radio screen showing both offline and online map interfaces, along with a YouTube video playing, demonstrating the unit's internet connectivity and multimedia capabilities.



FM/RDS Radio

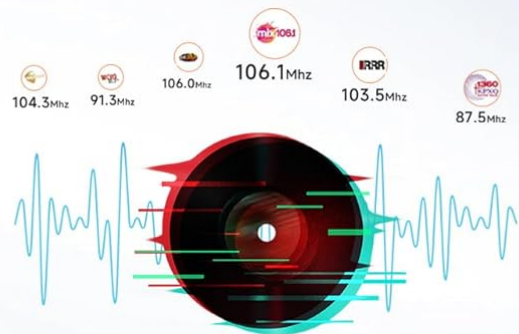


Image: Bluetooth, FM/RDS Radio, and DSP/EQ Audio. This image shows the Bluetooth call interface, FM radio tuner with frequency display, and the digital sound processing (DSP) equalizer settings for audio customization.

3. SETUP AND INSTALLATION

Proper installation is crucial for the optimal performance of your car radio. If you are unsure about any steps, it is recommended to seek professional assistance. Ensure the vehicle's power is disconnected before starting installation.

3.1 Included Components:

- Main Head Unit
- Instructions Manual

- GPS Antenna
- RCA Cable
- Canbus Decoder
- USB Cable (x2)
- Radio Antenna Adapter
- Reverse Line
- Mounting Accessories
- Installation Tool (Pry Bar)
- Power Cable
- Rear View Camera
- External Microphone

For Peugeot 508 2011-2018

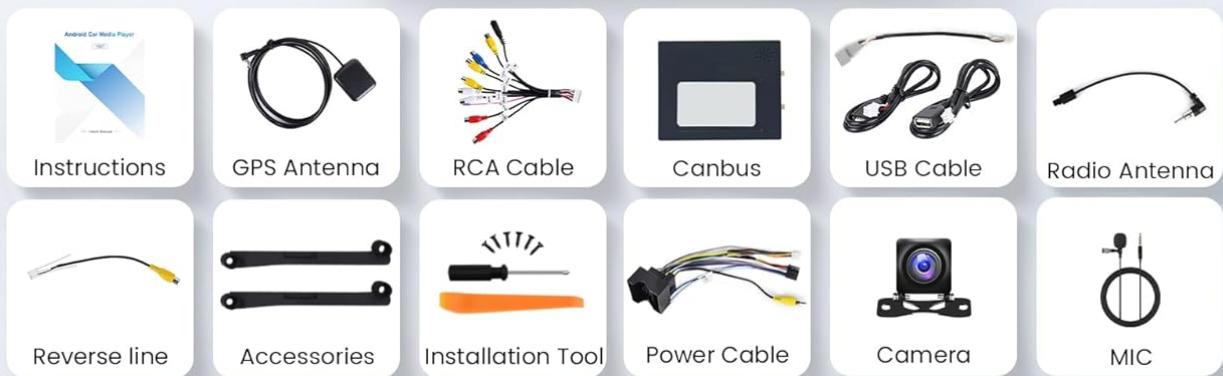


Image: Product dimensions and included accessories. This image provides a visual representation of the car radio's physical size and lists all the components that come in the package, such as cables, antennas, and the rear view camera.

3.2 Disassembly Precautions:

1. Use a pry tool to carefully remove the HVAC control panel. Disconnect the wiring and then unscrew the 4 screws securing the main unit.
2. Disconnect the main unit wiring. Use a pry bar to remove the trim above the original car's radio. Unscrew the two screws securing the top of the radio.
3. Use a pry bar to remove the outer frame of the original car's radio. Unscrew the four screws, remove the radio, disconnect the wiring, and take out the air vents on both sides from the car frame.

3.3 Installation Steps:

Note: If the wiring harness does not match your vehicle, please contact customer service to request the correct wiring harness.

1. Install the new radio into the new frame and tighten the 4 screws on the back. Attach the air vents to the new frame and secure the brackets. Then tighten the 4 screws on both sides of the brackets.
2. Connect the new radio to the corresponding vehicle wiring harness and ensure the protocol box (Canbus) is properly connected. Then install the new radio back into the vehicle and tighten the 2 screws at the top.
3. Reconnect all panels and trim pieces in reverse order of disassembly.

Installation Precautions

Disassembly

1. Use a pry tool to remove the HVAC control panel, disconnect the wiring, and then unscrew the 4 screws securing the main unit.



2. Disconnect the main unit wiring, use a pry bar to remove the trim above the original car's radio, and unscrew the two screws securing the top of the radio.



3. Use a pry bar to remove the outer frame of the original car's radio, unscrew the four screws, remove the radio, disconnect the wiring, and take out the air vents on both sides from the car frame.



Installation

(If the wiring harness does not match, please contact customer service to request the correct wiring harness)

1. Install the new radio into the new frame and tighten the 4 screws on the back. Attach the air vents to the new frame and secure the brackets, then tighten the 4 screws on both sides of the brackets.



2. Connect the new radio to the corresponding vehicle wiring harness and ensure the protocol box is properly connected. Then install the new radio back into the vehicle and tighten the 2 screws at the top.

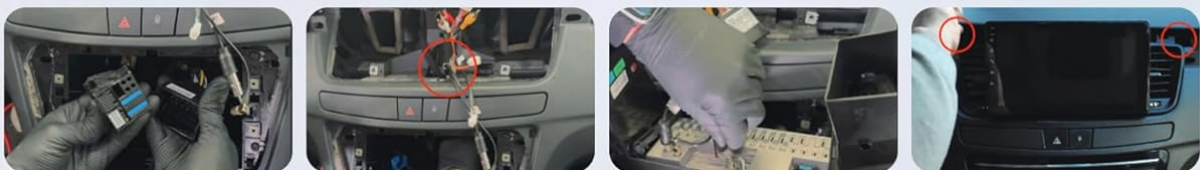


Image: Installation Precautions. This image provides a visual, step-by-step guide for both the disassembly of the original car radio and the installation of the new Rimoody unit, showing specific points for prying and screw removal/fastening.

4. OPERATING INSTRUCTIONS

4.1 Basic Operation

- **Power On/Off:** Press and hold the power button on the unit or steering wheel control to turn the unit on or off. A short press typically mutes/unmutes audio.
- **Touchscreen:** Navigate the interface by tapping, swiping, and pinching on the 9-inch display.
- **Volume Control:** Adjust volume using the physical buttons on the unit or steering wheel controls.

4.2 System Settings

- **Android System:** Access various settings through the 'Settings' icon on the home screen, similar to an Android smartphone.
- **WiFi Connection:** Go to Settings > Network & Internet > Wi-Fi to connect to an available network for online features and app downloads.
- **Factory Settings Keyword:** The default keyword for factory settings is **1234**. Use with caution as incorrect changes can affect system stability.
- **Language:** The system supports multiple languages including Chinese, English, French, Italian, Korean, Japanese, Arabic, Spanish, Portuguese, Russian, Turkish, Vietnamese, Hebrew, Polish, and German. Change in system settings.

4.3 Navigation

- **GPS:** The unit has built-in GPS. For navigation, you can use pre-installed offline maps (download data via internet) or online map applications like Google Maps after connecting to WiFi.
- **App Store:** Download additional navigation apps (e.g., Waze) from the Google Play Store.

4.4 Smartphone Integration

- **Wireless/Wired Carplay & Android Auto:** Connect your iOS or Android phone to access phone functions, music, and navigation via voice control or the touchscreen. Follow on-screen prompts for initial setup.
- **Mirror Link (Android/iOS):** Connect your smartphone via the original USB cable or WiFi to mirror its screen content onto the car radio display. This allows you to view videos, navigate, and listen to music directly from your phone.

4.5 Audio and Radio

- **Bluetooth:** Pair your mobile phone via Bluetooth 5.0 for hands-free calling and audio streaming. The unit includes a built-in microphone and supports an external microphone.
- **FM/RDS Radio:** Access the radio application to scan for FM/AM stations. RDS (Radio Data System) provides additional information like station name and traffic updates where available. You can manually search or use auto-scan.
- **DSP EQ:** Utilize the Digital Sound Processor (DSP) and Equalizer (EQ) settings to fine-tune audio output. Adjust frequency, balance, and choose from various sound types to optimize your listening experience.

4.6 Camera and Steering Wheel Control

- **AHD Rear View Camera:** When the vehicle is shifted into reverse gear, the car radio screen will automatically display the rear view image, enhancing safety during parking and reversing.

- **Steering Wheel Control:** The unit supports your vehicle's steering wheel controls. Access the 'Steering Wheel Control' settings in the system to map functions (e.g., volume, track skip, mode) to your steering wheel buttons.



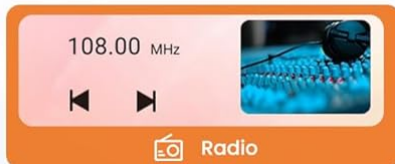
Image: Rear View Camera and Steering Wheel Control. This image shows the car radio displaying the rear view camera feed with parking guidelines, and the interface for programming steering wheel control buttons.

4.7 Advanced Features

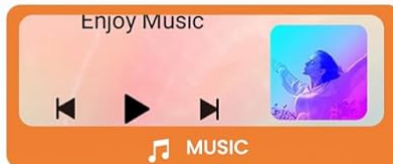
- **Split Screen:** The Android system supports a triple split screen function, allowing you to display up to three applications simultaneously (e.g., navigation, music player, and contacts).
- **Intelligent Voice Control (Optional):** If equipped, use natural language commands to ask questions, get directions, check weather, or play music.

- **Network Radio (Optional):** With special equipment, access mainstream radio stations from over 20 countries and regions globally via internet connection.
- **Global Weather Display (Optional):** With special equipment, view real-time weather information for global cities, including temperature, humidity, and wind conditions.

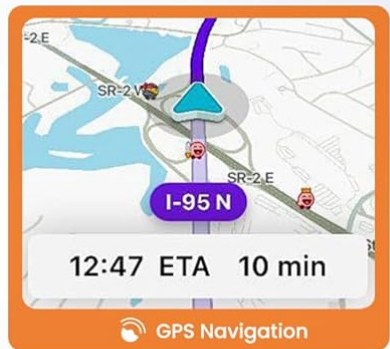
Split Screen



Radio



MUSIC



GPS Navigation



Quick APP



Wallpaper



Main Page

Supports DAB+/OBD2/DVR

(Excluding required accessories)



DVR



DAB+



OBD2

Image: Split Screen and Optional Accessories. This image demonstrates the split-screen feature, showing navigation, music, and radio simultaneously. It also highlights support for optional accessories like DVR, DAB+, and OBD2 (sold separately).

Intelligent Voice

(OPTIONAL)

Internet Radio

(OPTIONAL)



Global Climate

(OPTIONAL)



Hey PODOFO

Call Jenny

Play Beat it on Spotify

Tell a funny story about mangroves

Go to the airport



Play Rihanna on Youtube

Image: Intelligent Voice, Internet Radio, and Global Climate. This image illustrates the optional intelligent voice control feature, internet radio interface with various stations, and a global weather display showing temperature and conditions.

5. MAINTENANCE

- **Cleaning:** Use a soft, dry cloth to clean the screen and unit. For stubborn smudges, a slightly damp cloth with a mild, non-abrasive cleaner can be used, ensuring no liquid enters the unit.
- **Software Updates:** Periodically check for system software updates via the 'Settings' menu when connected to WiFi. Updates can improve performance and add new features.
- **Temperature:** Operate the unit within the specified working temperature range of -20°C to 75°C. Extreme temperatures can affect performance and lifespan.

6. TROUBLESHOOTING

- **No Power:** Check all power connections and fuses. Ensure the vehicle's ignition is on.
- **No Sound:** Verify volume settings, check speaker connections, and ensure the unit is not muted. Check DSP/EQ settings.
- **GPS Signal Loss:** Ensure the GPS antenna is properly installed and has a clear view of the sky.
- **Bluetooth Connection Issues:** Ensure Bluetooth is enabled on both the car radio and your phone. Try unpairing and re-pairing the devices.
- **Touchscreen Unresponsive:** Try restarting the unit. If the issue persists, a factory reset (using keyword 1234) might be necessary, but this will erase all user data.
- **System Slow/Freezing:** Close unnecessary applications. Clear cache from time to time. If persistent, a factory reset may be required.
- **Rear View Camera Not Displaying:** Check the camera's power and video connections. Ensure the reverse gear signal wire is correctly connected.

7. SPECIFICATIONS

System	Android
Screen Size	9 inches
Memory (RAM+ROM)	6 GB (RAM) + 128 GB (ROM)
Screen Resolution	1280 x 720
Power Output	4 x 45 W (180 Watts total)
Bluetooth Version	5.0
Working Temperature	-20°C to 75°C
Steering Wheel Control	Supported
Video Output	Supported
Reverse Input	AHD/CVBS
External Microphone	Supported
Split Screen	Supported
Maps	Built-in offline maps (internet required for data download)
WiFi	Supported
USB Ports	Double USB port
Factory Setting Keyword	1234
Compatible Devices	Smartphone

8. WARRANTY AND SUPPORT

Rimoody is committed to providing quality products and customer satisfaction. While specific warranty details should be referenced from your purchase documentation, we offer dedicated customer service and technical support.

If you encounter any problems with installation, operation, or have questions regarding your car radio, please do not hesitate to contact our professional customer service team and technicians. We are ready to assist you in resolving any issues.