

Manuals.plus /

› turelar /

› turelar Immersion Blender Handheld (Model HB8816) Instruction Manual

## turelar HB8816

# turelar Immersion Blender Handheld

Model: HB8816

Brand: turelar

## INTRODUCTION

---

Thank you for choosing the turelar Immersion Blender Handheld, Model HB8816. This corded electric stick mixer is designed for effortless blending and pureeing of various ingredients, from smoothies and soups to baby food and sauces. Its powerful motor and ergonomic design make it a versatile and convenient tool for your kitchen. Please read this manual carefully before use to ensure safe and optimal operation.

## IMPORTANT SAFETY INFORMATION

---

Always follow basic safety precautions when using electrical appliances to reduce the risk of fire, electric shock, and personal injury.

- **Do not immerse the motor unit** in water or other liquids.
- Always unplug the appliance from the outlet when not in use, before putting on or taking off parts, and before cleaning.
- Avoid contact with moving parts. Keep hands, hair, and clothing, as well as spatulas and other utensils, away from blades during operation to prevent injury and/or damage to the appliance.
- To prevent overheating, operate the hand blender in one-minute intervals or less. Allow the appliance to cool down before prolonged use.
- This appliance is not intended for use by children. Keep the appliance and its cord out of reach of children.
- Do not use the appliance for anything other than its intended use.

## PRODUCT COMPONENTS

---

Your turelar Immersion Blender comes with the following main components:

- **Motor Unit:** The main body containing the high-torque copper motor and control buttons.

- **Blending Shaft:** The detachable stainless steel shaft with 2-pronged blades.



## **POWERFUL BLENDING**

### • Low Speed-Soft Food



### • High Speed-Hard Food

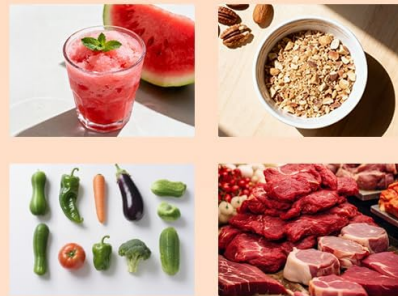


Image: The turelar Immersion Blender Handheld, showing the main motor unit and the detachable blending shaft.

## **SETUP**

Before first use, ensure all packaging materials are removed. Wash the blending shaft thoroughly with warm, soapy water, rinse, and dry. The motor unit should only be wiped with a damp cloth.

1. Align the blending shaft with the motor unit.
2. Push the shaft onto the motor unit until it clicks securely into place.
3. Ensure the unit is properly assembled before plugging it into a 120 Volt electrical outlet.



Image: Hands demonstrating the assembly of the detachable blending shaft to the motor unit.

## OPERATING INSTRUCTIONS

---

The turelar Immersion Blender features two mixing speeds and a pulse-activated sensor for precise control.

1. **Prepare Ingredients:** Cut larger ingredients into smaller pieces for easier blending.
2. **Immerse Blender:** Place the blending shaft into the ingredients in a container, pot, or bowl. Ensure the blades are fully submerged to prevent splashing.
3. **Select Speed:**
  - Press the **Power Button** for normal blending speed, suitable for soft foods like cooked vegetables or liquids.
  - Press the **TURBO Button** for extra power, ideal for tougher ingredients like frozen fruits or nuts.
4. **Blend:** Move the blender up and down gently through the ingredients to ensure even blending.
5. **Release Button:** The blender will stop operating once the button is released.
6. **Overheating Prevention:** Do not operate the blender continuously for more than one minute. Allow a short break between cycles to prevent motor overheating.

# ***2-PRONGED BLADE***

**Tested - Cut More Efficiently than  
4 Blades and Easier to Clean**



Image: Close-up of the turelar Immersion Blender's handle, showing the power and turbo buttons for speed control.

# VERSATILE USE

From Smoothies to Soups  
Sauces, and More — All in One Tool



Image: A person using the turelar Immersion Blender to blend soup directly in a pot, demonstrating its ergonomic design and long blending stick.

Video: Official product video demonstrating the turelar Immersion Blender in action, highlighting its features and versatility for various blending tasks.

## MAINTENANCE AND CLEANING

Proper cleaning and maintenance will ensure the longevity of your immersion blender.

1. **Unplug:** Always unplug the blender from the power outlet before cleaning.
2. **Detach Shaft:** Press the release buttons on the side of the motor unit and twist to detach the blending shaft.
3. **Clean Blending Shaft:** Hand wash the stainless steel blending shaft and blades with warm, soapy water. Rinse thoroughly and dry immediately. The shaft is also dishwasher safe.
4. **Clean Motor Unit:** Wipe the motor unit with a damp cloth. **Do not immerse the motor unit in water or any other liquid.**
5. **Storage:** Store the blender in a dry place. The top hanging ring allows for convenient storage, saving kitchen space.



Image: Hands detaching the blending shaft from the motor unit, illustrating the easy disassembly for cleaning.

## TROUBLESHOOTING

If you encounter any issues with your turelar Immersion Blender, please refer to the following:

- **Blender not turning on:** Ensure the blender is securely plugged into a working electrical outlet. Check if the power button is being pressed firmly.
- **Inconsistent blending:** Ensure the blades are fully submerged in ingredients. Move the blender up and down gently to ensure all ingredients are processed.
- **Overheating:** If the motor unit feels hot, unplug the appliance immediately and allow it to cool down for at least 20 minutes before resuming use. Remember to operate in one-minute intervals or less.

For further assistance, please contact turelar customer support.

## SPECIFICATIONS

<b>Brand</b>	turelar
<b>Model</b>	HB8816
<b>Power Source</b>	Corded Electric
<b>Number of Speeds</b>	2 (with Turbo/Pulse)
<b>Voltage</b>	120 Volts
<b>Material</b>	Food-grade stainless steel, BPA-free
<b>Product Dimensions</b>	5"D x 2.5"W x 8.5"H
<b>Item Weight</b>	1.43 pounds

## WARRANTY AND SUPPORT

---

Your turelar Immersion Blender (Model HB8816) is covered by a **1 Year Limited Warranty** from the date of purchase. This warranty covers defects in materials and workmanship under normal use.

For warranty claims, technical support, or any questions regarding your product, please contact turelar customer service through the retailer where the product was purchased or visit the official turelar website for contact information.