

Manuals+

[Q & A](#) | [Deep Search](#) | [Upload](#)

manuals.plus /

- › [Pawfly](#) /
- › [Pawfly 6 Pack Seed Starter Kit with Adjustable Grow Lights - Instruction Manual](#)

Pawfly B0FSZS8BFH

Pawfly 6 Pack Seed Starter Kit with Adjustable Grow Lights

Your comprehensive guide to successful seed germination and plant growth.

INTRODUCTION

The Pawfly 6 Pack Seed Starter Kit is designed to provide an optimal environment for germinating seeds and nurturing seedlings indoors. This kit includes 72 cells across 6 trays, adjustable full-spectrum LED grow lights, and humidity domes to ensure your plants receive the necessary light, moisture, and warmth for healthy development. Its durable construction and customizable features make it suitable for a variety of plants, from vegetables and herbs to flowers and microgreens.



Image: Overview of the Pawfly Seed Starter Kit, highlighting its key features like smart lighting, 12-cell trays, elevated domes, and adjustable humidity.

PACKAGE CONTENTS

Please ensure all the following components are present in your Pawfly 6 Pack Seed Starter Kit:

- 6 x Humidity Domes (3.9" tall)

- 6 x Cell Trays (12 cells each, total 72 cells)
- 6 x Drip Trays
- 6 x LED Grow Lights (full-spectrum)
- 1 x 6-Way USB-C Power Cable (Wall Adapter Not Included)
- 2 x Planting Tools
- 10 x Plastic Plant Labels

Complete Kit



Image: A visual representation of all components included in the Pawfly 6 Pack Seed Starter Kit, laid out clearly.

Follow these steps to assemble and prepare your seed starter kit for use:

1. **Prepare the Trays:** Place each 12-cell tray into its corresponding drip tray.
2. **Install Grow Lights:** Insert each LED grow light into the designated opening on the top of each humidity dome. Ensure a secure fit.
3. **Connect Power:** Connect the 6-way USB-C power cable to each of the 6 grow lights. Plug the USB-C end into a compatible wall adapter (not included).
4. **Add Growing Medium:** Fill each cell with your preferred seed starting mix or place peat pellets into the cells.
5. **Plant Seeds:** Plant your seeds according to their specific requirements. Use the included planting tools for precision. Label your plants using the provided plastic labels.
6. **Water:** Gently water the soil until it is moist but not waterlogged.
7. **Place Humidity Domes:** Cover each tray with its humidity dome.

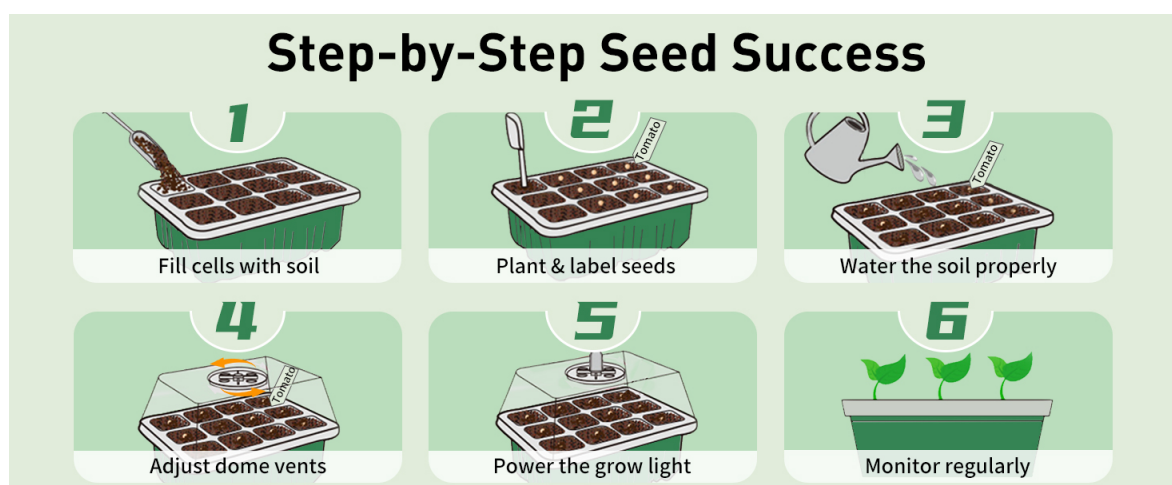


Image: A visual guide illustrating the six steps for successful seed starting, from filling cells with soil to monitoring growth.

Power Connection Overview

6-in-1 Smart Controller

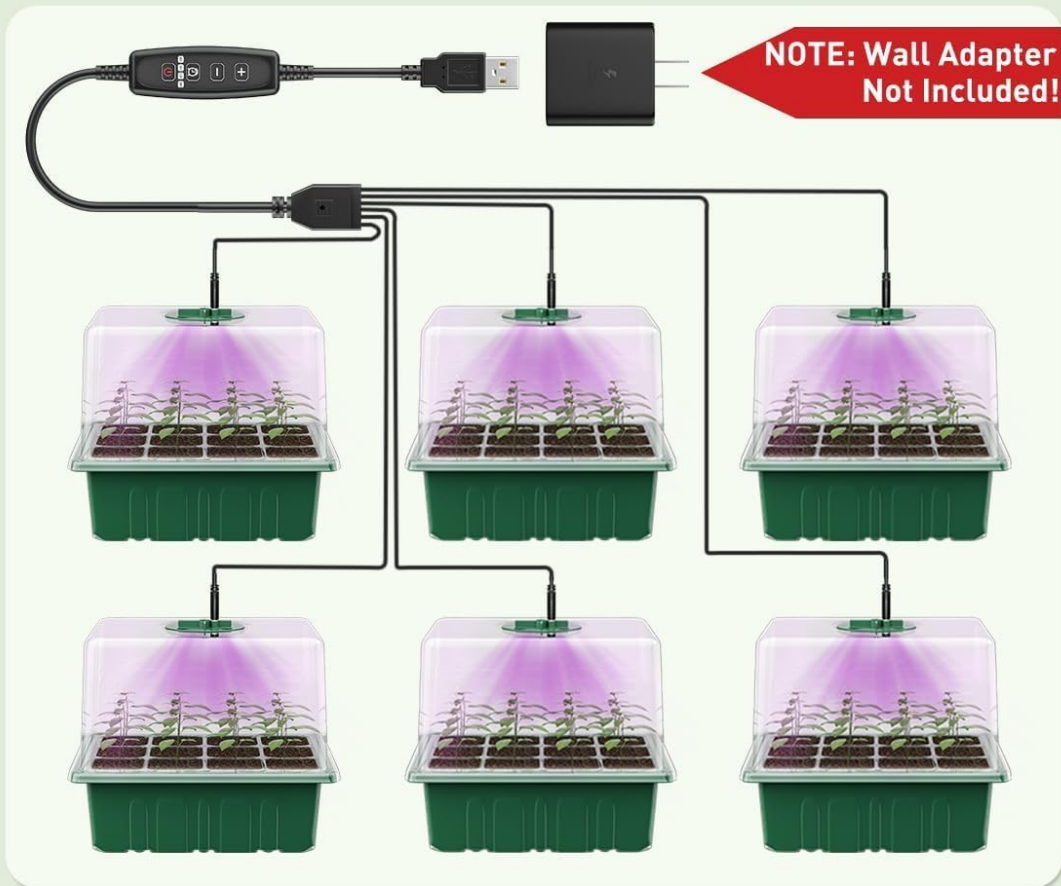


Image: Diagram showing the connection of the 6-way USB-C power cable to multiple grow lights and the smart controller. Note: Wall adapter is not included.

Video: Initial Setup and Controller Demonstration

Your browser does not support the video tag.

Video: A demonstration of connecting the grow lights and using the controller to adjust settings. This video shows the purple light spectrum in action.

OPERATING INSTRUCTIONS

Grow Light Control

The integrated LED grow lights provide full-spectrum illumination essential for photosynthesis. Use the smart controller to customize light settings:

- **Brightness Adjustment:** Press the '+' or '-' buttons to cycle through 5 adjustable brightness settings (20%, 40%, 60%, 80%, 100%).
- **Timer Options:** Press the timer button to select from 4 preset timer options: 4 hours, 8 hours, 12 hours, or 18 hours. The lights will automatically turn off after the selected duration and cycle daily.

Full Spectrum

Mimic natural sunlight to boost photosynthesis rates

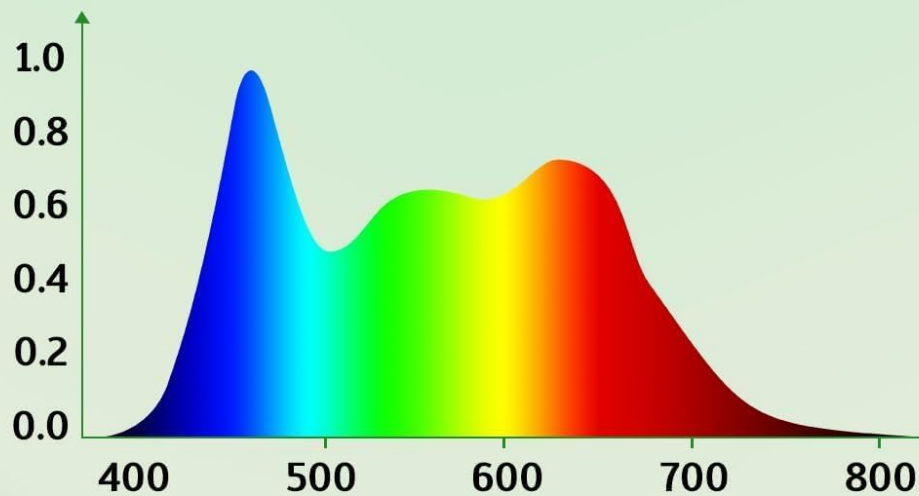


Image: Illustration of the full-spectrum grow light controller, detailing the 5 adjustable brightness settings and 4 timer options.

Humidity Dome Adjustment

The 3.9-inch tall humidity domes provide ample vertical space for seedlings and help maintain optimal humidity levels. To adjust humidity:

- Rotate the top vent on each humidity dome to open or close the air circulation holes.
- Adjust the vents to maintain interior humidity levels between 50% to 100%, depending on your plant's needs.

Adjustable Humidity Level

Create ideal growing conditions for different plants



Image: Diagram showing how to adjust the humidity level by rotating the vent on the humidity dome, suitable for various plants like tomatoes, strawberries, and mint.

Video: Seedling Growth and Features

Your browser does not support the video tag.

Video: A user demonstrating the seedling tray with growing plants, highlighting the functionality and benefits of the kit for plant growth.

MAINTENANCE

Proper care and maintenance will extend the life of your Pawfly Seed Starter Kit:

- **Cleaning:** After each use or growing cycle, clean the trays, cells, and domes with mild soap and water. Rinse thoroughly and allow to air dry completely before storage or reuse.
- **Storage:** Store all components in a cool, dry place away from direct sunlight when not in use.
- **Durability:** The thickened 0.8 mm PVC material is designed to resist warping and cracking, ensuring reusability for many seasons.

TROUBLESHOOTING

Here are some common issues and their potential solutions:

Problem	Possible Cause	Solution
Grow lights not turning on	Loose connection, no power to USB adapter, faulty cable/light.	Check all USB connections. Ensure the wall adapter is working and plugged in. Test with a different USB power source if available.
Poor seed germination	Incorrect temperature, insufficient moisture, old seeds, improper light.	Ensure consistent warmth and humidity. Keep soil consistently moist. Verify seed viability. Adjust grow light settings as needed.
Excessive condensation in dome	Too high humidity, insufficient ventilation.	Rotate the dome vents to allow more air circulation. Briefly remove domes daily to air out.
Seedlings appear leggy or stretched	Insufficient light intensity or duration.	Increase grow light brightness or extend timer duration. Ensure lights are positioned close enough to seedlings without touching.

PRODUCT SPECIFICATIONS

Feature	Detail
Material	Plastic (Thickened 0.8 mm PVC)
Color	Green
Style	Seed Starter Kit
Planter Form	Nursery Pot
Indoor/Outdoor Usage	Indoor
Product Dimensions (per tray)	7.9"D x 7.6"W x 6.1"H

Feature	Detail
Number of Cells	72 (6 trays x 12 cells)
Humidity Dome Height	3.9 inches (10 cm)
Grow Light Type	Full Spectrum LED
Brightness Settings	5 adjustable levels
Timer Options	4H, 8H, 12H, 18H
Power Input	USB-C (6-way cable included, adapter not included)
Item Weight	1.74 pounds (total for 6-pack)

WARRANTY INFORMATION AND CUSTOMER SUPPORT

Pawfly products are designed for quality and durability. For specific warranty details, please refer to the product packaging or contact Pawfly customer support directly. If you encounter any issues or have questions regarding your Seed Starter Kit, please reach out to our customer service team for assistance. We are committed to ensuring your satisfaction and successful gardening experience.