

[Manuals.plus](#) /

› [PLAXSOON](#) /

› PLAXSOON Green Rose Flower Bouquet Building Set SC8835 Instruction Manual

PLAXSOON SC8835

PLAXSOON Green Rose Flower Bouquet Building Set (Model SC8835) Instruction Manual

PRODUCT OVERVIEW

This manual provides instructions for assembling and maintaining your PLAXSOON Green Rose Flower Bouquet Building Set. This botanical collection allows you to create a lasting floral display with 12 green roses and 4 branches of gypsophila, featuring integrated warm fairy lights. The set consists of 523 high-quality ABS building blocks designed for creative assembly and display.



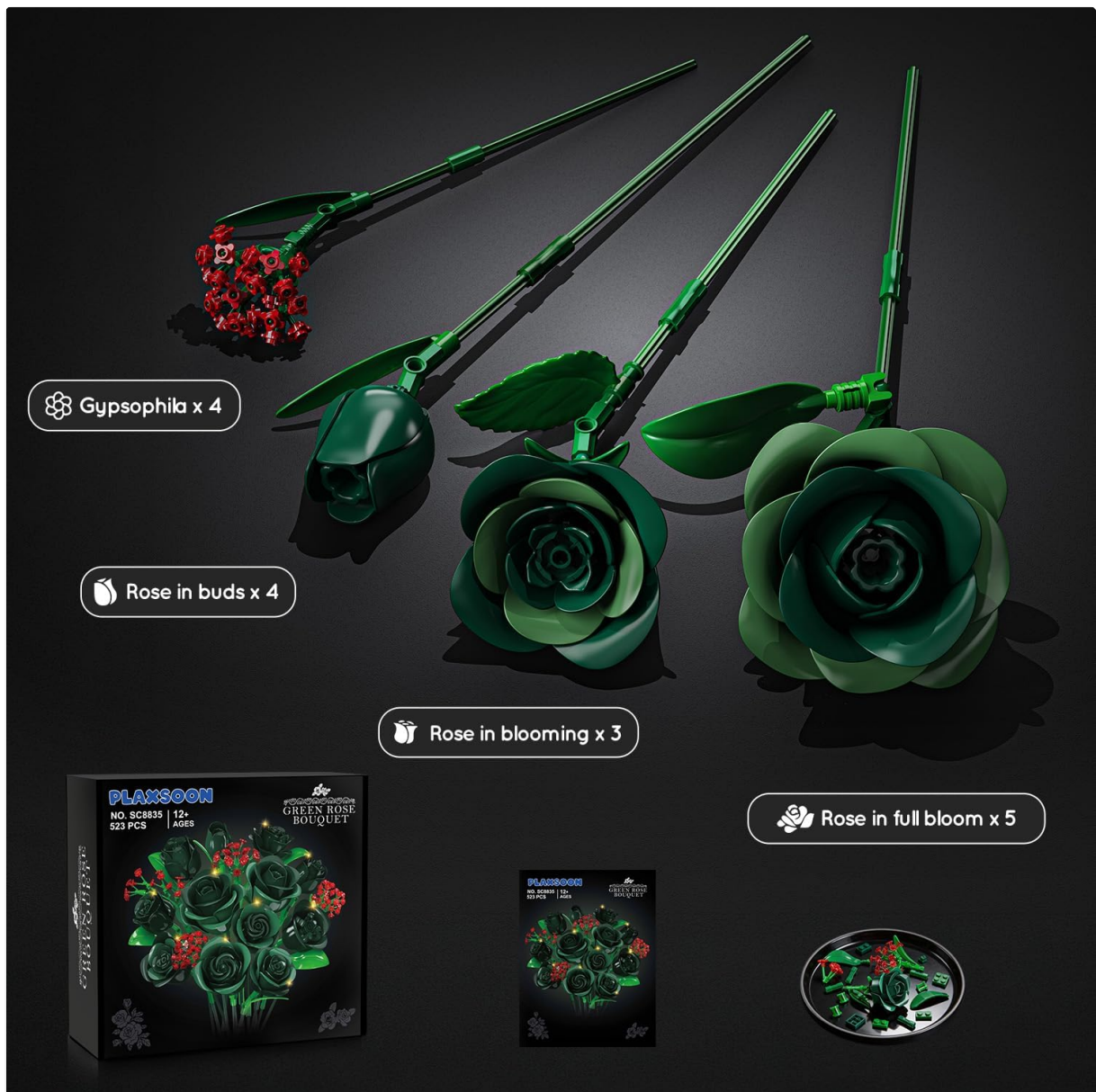
Description: An assembled PLAXSOON Green Rose Flower Bouquet, showcasing the vibrant green roses and red gypsophila in a clear vase, placed on a table.

ASSEMBLY INSTRUCTIONS

This set contains 523 high-quality ABS building blocks. Follow the step-by-step instructions carefully for a successful assembly. The assembly process encourages creative thinking and fine motor skills.

Step 1: Unpack Components

Carefully remove all building blocks from their packaging. Organize the pieces by type and color to facilitate assembly. Identify the different parts for roses (buds, blooming, full bloom) and gypsophila.



Gypsophila x 4

Rose in buds x 4

Rose in blooming x 3

Rose in full bloom x 5

Description: This image displays the various components included in the set, such as individual gypsophila pieces, rose buds, blooming roses, and full bloom roses, along with the main instruction manual and packaging.

Step 2: Follow Manual Instructions

Refer to the included instruction manual for detailed, visual guidance on connecting the building blocks. Each rose and gypsophila branch is assembled individually. Pay close attention to the diagrams for correct piece placement.



12+



523 PCS



Clear Simple Assembly Steps

One-time Assembly, Long-term Satisfaction

Description: This image illustrates the clear, simple assembly steps provided in the instruction manual, showing how to connect the building blocks to form the rose stems, leaves, and flower heads.

Step 3: Assemble Roses and Gypsophila

Construct the 12 green roses and 4 gypsophila branches according to the manual. The set allows for different stages of rose bloom (budding, blooming, fully bloomed) to add variety to your bouquet.



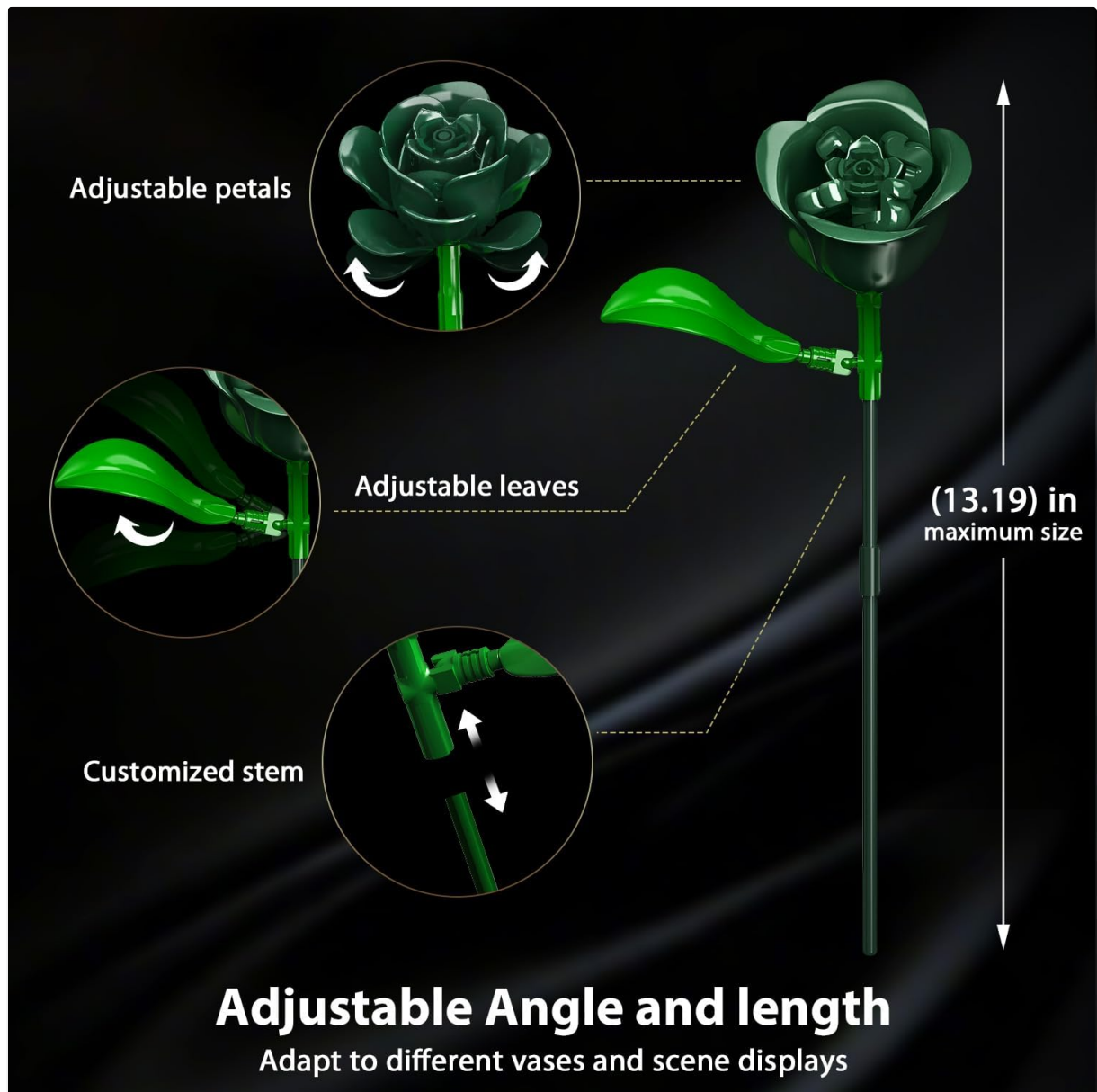
Description: This image shows the three stages of rose development – budding, blooming, and fully bloomed – which can be assembled using the building blocks.

OPERATING INSTRUCTIONS

Once assembled, your flower bouquet offers adjustable features and integrated lighting to enhance its display.

Adjusting the Bouquet

The stem length, leaf angle, and flower opening can be individually adjusted to create your desired arrangement. Gently manipulate the components to achieve the desired look and fit various vases or display settings.



Description: This image highlights the adjustable features of the bouquet, including customizable stem length, adjustable leaf angles, and adjustable petals, allowing for personalized arrangement.

Activating the Lights

The bouquet includes integrated warm fairy lights. Insert 3 nonstandard batteries (not included) into the designated battery compartment. Activate the lights to immerse the arrangement in a gentle, soothing glow, creating a relaxed atmosphere.



Description: This image shows the assembled green rose bouquet with its integrated warm fairy lights illuminated, creating a soft and ambient glow in a room setting.

MAINTENANCE

This building block bouquet is designed for lasting beauty and requires minimal maintenance.

Cleaning

To clean, gently wipe the blocks with a dry, soft cloth to remove dust. Avoid using harsh chemicals, abrasive materials, or excessive moisture, as these may damage the material or finish.

Storage

Store the bouquet indoors, away from direct sunlight or extreme temperatures, to preserve its color and material integrity. While durable, prolonged exposure to harsh conditions can affect the plastic components.

TROUBLESHOOTING

If you encounter any issues with your PLAXSOON Green Rose Flower Bouquet, please refer to the

following common troubleshooting tips:

Lights Not Working

- Ensure batteries are correctly inserted with the proper polarity (+/-).
- Check if the batteries are new and fully charged. The lighting system requires 3 nonstandard batteries.
- Verify all connections for the lighting components are secure and properly seated.

Loose Blocks

- If any blocks become loose during handling or display, re-attach them firmly according to the assembly instructions. Ensure a snug fit to maintain the bouquet's structure.

SPECIFICATIONS

Brand	PLAXSOON
Model Name	SC8835
Material	Acrylonitrile Butadiene Styrene (ABS)
Number of Pieces	523
Item Weight	0.77 Kilograms
Item Dimensions (L x W x H)	25 x 25 x 25 millimetres (assembled, approximate)
Educational Objective	Creative Thinking, Fine Motor Skills, Problem-Solving
Age Range Description	Adult (Recommended for 12+ years)
Power Source	Battery (3 Nonstandard Batteries required)

WARRANTY INFORMATION

Specific warranty details for the PLAXSOON Green Rose Flower Bouquet Building Set (Model SC8835) are not provided in the product information. Please refer to the retailer or manufacturer's website for any available warranty policies.

CUSTOMER SUPPORT

For further assistance or inquiries regarding your PLAXSOON Green Rose Flower Bouquet Building Set, please contact the retailer where the product was purchased. Manufacturer contact information is not explicitly provided in the product details.