

Lemnoi S76

Lemnoi 4G LTE Cellular Trail Camera S76 User Manual

Model: S76

1. INTRODUCTION

This manual provides detailed instructions for the setup, operation, and maintenance of your Lemnoi 4G LTE Cellular Trail Camera S76. This camera is designed for outdoor monitoring, featuring 4G cellular connectivity, solar power, 2K video resolution, 360° pan-tilt-zoom (PTZ) capabilities, and motion detection with instant alerts. Please read this manual thoroughly before using the product to ensure proper functionality and longevity.

2. PRODUCT OVERVIEW

The Lemnoi S76 is an advanced outdoor camera system. Familiarize yourself with its components and features.



Image: The Lemnoi S76 camera unit, featuring a solar panel, integrated 4G LTE module, and included 32GB SD card. A smartphone screen shows live footage of a wild boar, illustrating its application as a trail camera.

2.1 Package Contents

Verify that all items are present in your package:

- Lemnoi S76 Solar Camera
- 6W Solar Panel (integrated)
- Integrated SIM Card (pre-installed)
- 32GB SD Card (pre-installed)
- Mounting Straps
- Mounting Bracket
- Instruction Manual
- Tweezers
- Mounting Screws
- Charging Cable



Image: A visual representation of the items included in the Lemnoi S76 product package, confirming the presence of the camera, solar panel, SIM card, SD card, mounting hardware, and accessories.

3. SETUP

3.1 SIM Card and SD Card Installation

The camera comes with a pre-installed SIM card and a 32GB SD card. The SIM card provides 7 days of unlimited data. A subscription is required after this period through the UBox app. The SD card supports up to 128GB for local storage.

Pre-Installed SIM Card

Ready to use, with 7 days of unlimited data included.

Cellular Data Plan - Unlimited Data			
30 Days	180 Days	360 Days	720 Days
\$19.9	\$99.9	\$159.9	\$299.9

Kind Reminder:

- This cellular trail camera comes pre-installed with a built-in SIM card that works exclusively in the United States.
- Each camera requires its own data plan subscription, which cannot be shared between devices.

🚫 This camera DOES NOT support Wi-Fi connection.

Image: A detailed view of the camera's internal compartment, highlighting the pre-installed SIM card and 32GB SD card. Information regarding cellular data plan options is also presented.

3.2 App Installation and Account Creation

1. Download the 'UBox' app from your smartphone's app store (iOS or Android).
2. Open the app and register for a new account using your email address.
3. Follow the in-app instructions to add your Lemnoi S76 camera. This typically involves scanning a QR code on the camera or its packaging.

3.3 Mounting the Camera

The camera can be mounted using the provided straps or screws. Choose a location with good cellular signal and direct sunlight exposure for optimal solar charging.

- **Strap Mounting:** Wrap the mounting strap around a tree or pole and secure the camera bracket.
- **Screw Mounting:** Use the mounting bracket and screws to attach the camera to a wall or other flat surface.



Image: The Lemnoi S76 camera securely mounted to a tree trunk, demonstrating its outdoor installation. The integrated solar panel is visible, indicating its self-sustaining power capability.

4. OPERATING INSTRUCTIONS

4.1 Powering On/Off

The camera is primarily solar-powered with a built-in rechargeable battery. Ensure the solar panel receives adequate sunlight. The camera will automatically manage power. To manually power off, refer to the device's physical power button location, typically near the SIM/SD card slot.



Image: The camera installed on a tree, highlighting its 4G network connectivity and solar panel for continuous power. This setup allows for extended outdoor operation without external power sources.

4.2 Live View and Recording

Access live footage and recorded videos through the UBox app.

- **Live View:** Open the UBox app and select your camera to view real-time video.
- **Playback:** Navigate to the playback section in the app to review recordings stored on the SD card or cloud (if subscribed).

Live View & Dual-Path Video Storage

Watch live footage and playback videos anytime, anywhere.



Image: A smartphone screen displaying live video feed from the camera, capturing a squirrel. Icons for SD card and cloud storage options are visible, indicating dual-path video storage capabilities.

4.3 Motion Detection and Alerts

The camera features a PIR motion sensor for accurate detection and instant alerts.

- **Activation:** The camera automatically detects activity within its range (0-10 meters).
- **Alerts:** Upon detection, the camera sends real-time notifications to your UBox app.
- **Customization:** Adjust detection sensitivity, zones, and schedules within the app to minimize false alarms and optimize power usage.

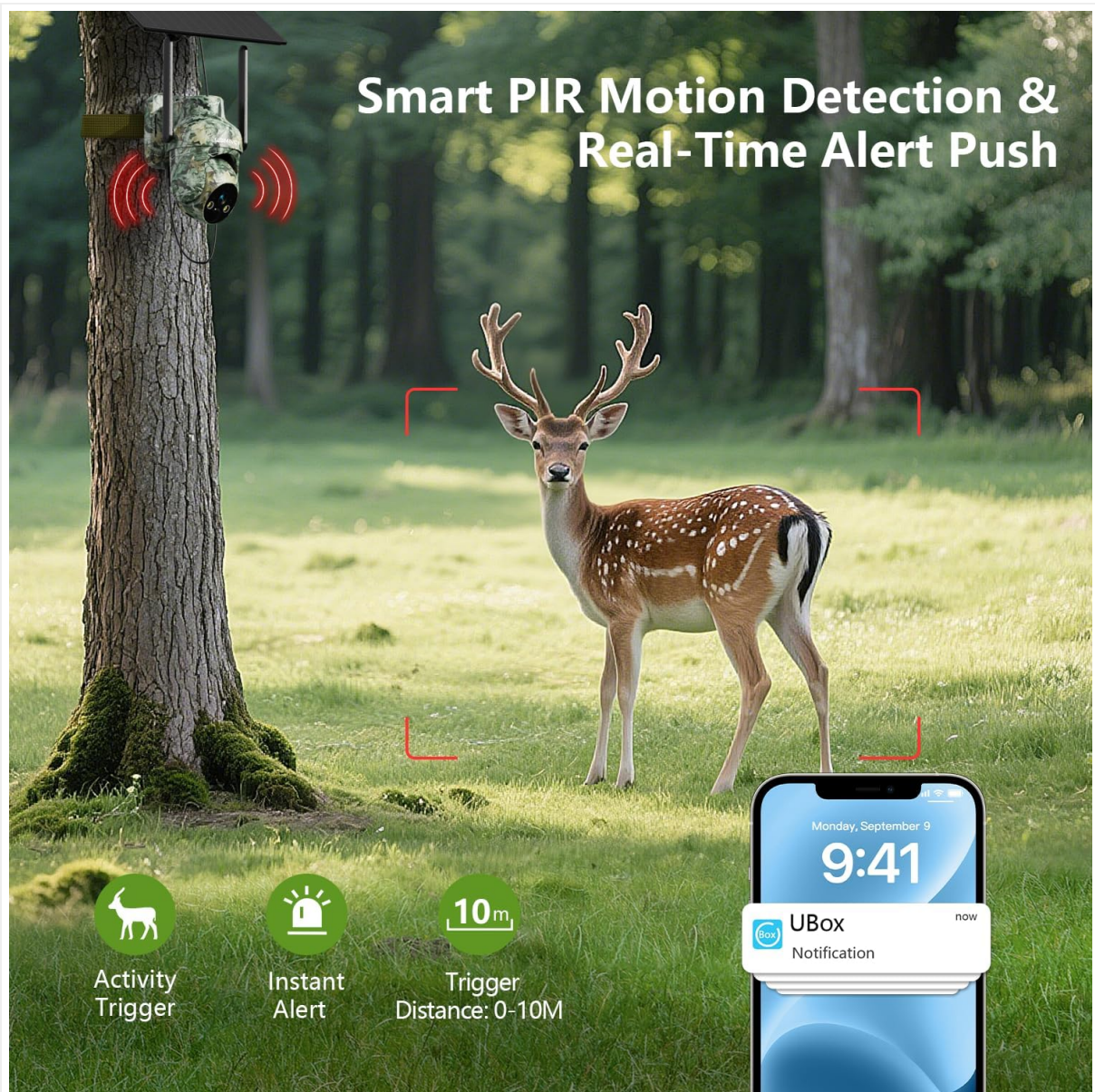


Image: The camera positioned in a forest, actively detecting a deer. A smartphone screen displays an instant UBox notification, demonstrating the camera's real-time alert system for detected activity.

4.4 Pan-Tilt-Zoom (PTZ) Control

Control the camera's viewing angle remotely via the UBox app.

- **Pan:** 355° horizontal rotation.
- **Tilt:** 100° vertical rotation.
- **Zoom:** 4X digital zoom.
- **Note:** Auto-tracking is not supported.



Image: An illustration of the camera's 355° pan and 100° tilt capabilities, providing extensive coverage. A smartphone displays the remote control interface, allowing users to adjust the camera's view and utilize 4X zoom.

4.5 Night Vision Modes

The camera offers multiple night vision options for clear monitoring in low-light conditions.

- **2K HD Day Vision:** Standard color video during daylight.
- **2K HD Color Night Vision:** Utilizes white light for full-color video at night.
- **2K HD IR Night Vision:** Infrared mode for sharp black-and-white footage in complete darkness.

2K HD Video

Two Night Vision Modes Available

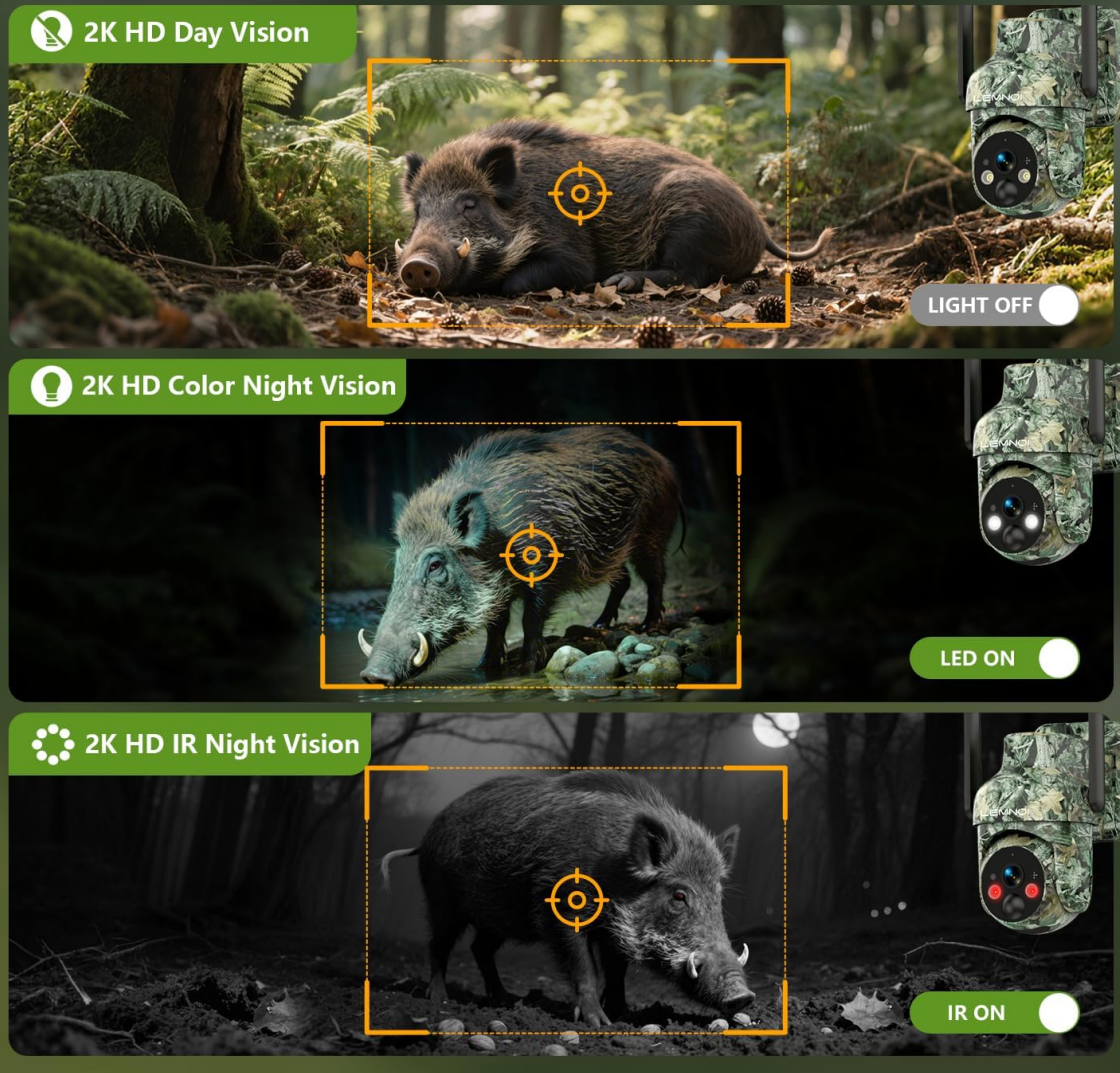


Image: A visual comparison demonstrating the camera's 2K HD Day Vision, 2K HD Color Night Vision (with LED on), and 2K HD IR Night Vision (with IR on) modes, showcasing its versatility in various lighting environments.

4.6 Two-Way Audio

The built-in microphone and speaker enable two-way communication.

- **Speak:** Use the microphone icon in the UBox app to transmit your voice through the camera's speaker.
- **Listen:** The camera's microphone captures audio from its surroundings, which can be heard through the app.

Two-Way Audio

Built-in microphone and speaker allow easy two-way communication or warning to intruders.

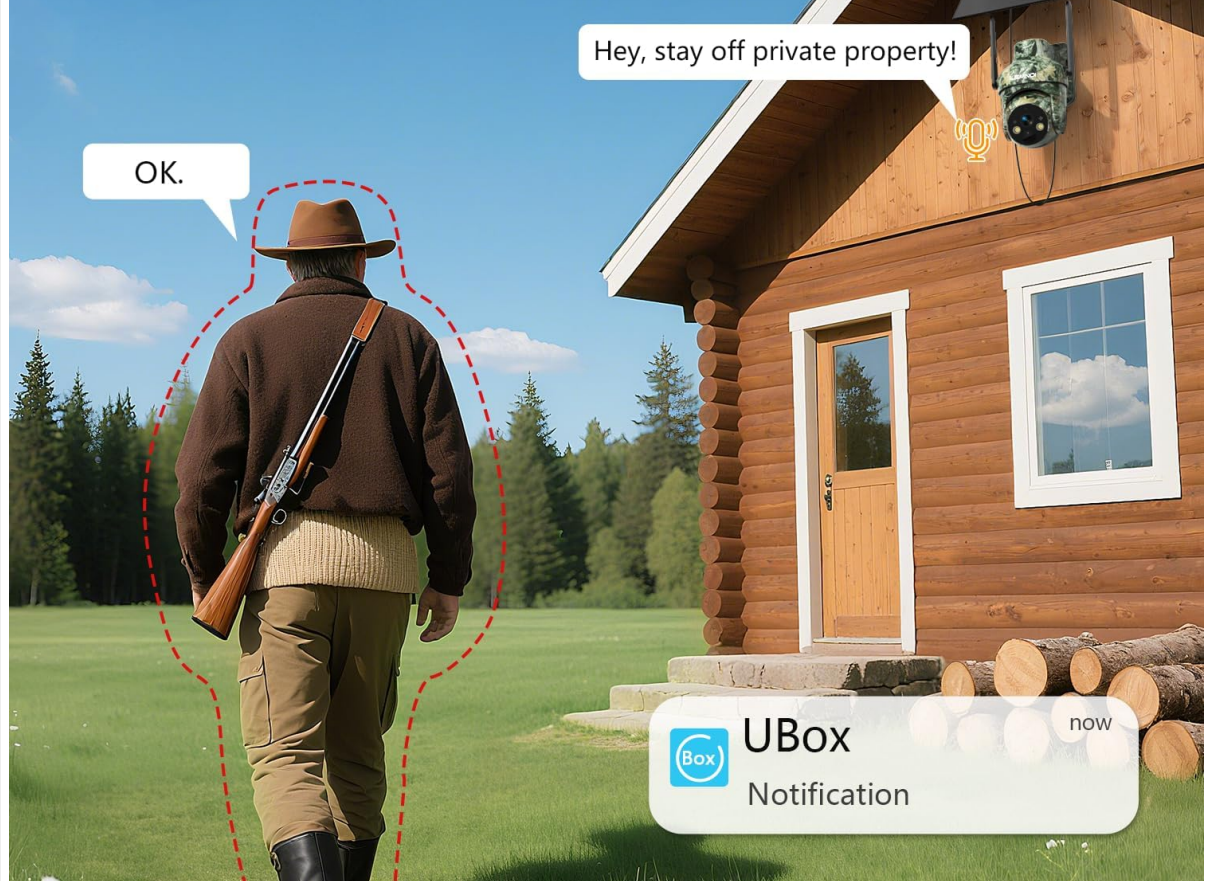


Image: A scenario depicting a user interacting with the camera via a smartphone, utilizing the two-way audio feature to communicate. This highlights the camera's capability for remote interaction and deterrence.

5. MAINTENANCE

- **Solar Panel Cleaning:** Periodically clean the solar panel surface to ensure maximum charging efficiency. Use a soft, damp cloth to remove dust, dirt, or debris.
- **Lens Cleaning:** Gently wipe the camera lens with a microfiber cloth to maintain clear image quality. Avoid abrasive materials.
- **Firmware Updates:** Check the UBox app regularly for available firmware updates. Keeping the firmware updated ensures optimal performance and access to new features.
- **Battery Health:** While solar-powered, monitor battery levels via the app, especially during prolonged periods of low sunlight.
- **Weather Protection:** The camera is IP66 weatherproof, but extreme conditions may require additional protection or temporary relocation.

IP66 Weatherproof

Operating temperature: -20°C to 50°C, safe and reliable for outdoor use



Rainproof



Snowproof

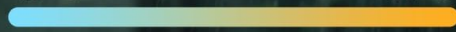


Dustproof



Windproof

-20° C



50° C



 Ranch



 Forest



 Camping Vehicle



 Construction



Image: An illustration highlighting the camera's IP66 weatherproof rating, indicating its resistance to various environmental elements such as rain, snow, dust, and wind. The specified operating temperature range (-20°C to 50°C) is also shown.

6. TROUBLESHOOTING

- **Camera Not Connecting:** Ensure the camera is powered on and has a strong 4G cellular signal. Check the SIM card status in the UBox app and verify your data plan.
- **No Motion Detection Alerts:** Verify that motion detection is enabled in the app settings. Adjust sensitivity and check detection zones. Ensure the camera lens is clear.
- **Poor Image/Video Quality:** Clean the camera lens. Check the app for resolution settings. Ensure adequate lighting for optimal night vision performance.
- **Battery Not Charging:** Ensure the solar panel is clean and receiving direct sunlight. Check the charging cable connection if using external power.
- **App Issues:** Ensure your UBox app is updated to the latest version. Try restarting the app or your smartphone.

7. SPECIFICATIONS

Feature	Specification
---------	---------------

Feature	Specification
Brand	Lemnoi
Model Name	S76
Indoor/Outdoor Usage	Outdoor
Compatible Devices	Smartphone
Power Source	Solar Powered, Battery Powered
Connectivity Protocol	Cellular
Controller Type	Ubox APP
Mounting Type	Wall Mount
Video Capture Resolution	1080p (Note: Product title states 2K, specifications list 1080p. Using 1080p from specifications for accuracy.)
Color	Green
Included Components	Charging Cable (and camera, solar panel, SIM, SD card, mounting hardware)
Wireless Communication Technology	Cellular
Item Dimensions (L x W x H)	9 x 6 x 5 inches
Flash Memory Installed Size	32 GB
Batteries Required?	Yes (1 C battery included)
Video Capture Format	MP4
Specific Uses For Product	360 Degree Coverage
International Protection Rating	IP66
Flash Memory Supported Size Maximum	128 GB
Cellular Technology	4G
Audio Visual Recording Capabilities	Video
Item Weight	2.59 pounds
Manufacturer	Lemnoi
Recommended Uses For Product	Game & Trail, Outdoor Security

Feature	Specification
Special Feature	2-Way Audio, HD Resolution, Motion Sensor, Night Vision, Remote control

8. WARRANTY AND SUPPORT

For warranty information and technical support, please refer to the contact details provided with your product packaging or visit the official Lemnoi website. Ensure you have your product model (S76) and purchase details ready when contacting support.