

Manuals+

[Q & A](#) | [Deep Search](#) | [Upload](#)

Manuals.plus /

> [Harvopu](#) /

> Harvopu Keyboard Case User Manual for iPad 10th Gen (A2696/A2757/A2777) and iPad 11th Gen (A3354/A3355/A3356)

Harvopu A16 / 10th Gen

Harvopu Keyboard Case User Manual

For iPad 10th Generation (10.9-inch 2022) and iPad (A16) 11th Generation (11-inch 2025)

1. PRODUCT OVERVIEW

The Harvopu Keyboard Case is designed to enhance your iPad experience, offering protection, a multi-touch trackpad, and a backlit keyboard. It features a 360-degree rotating magnetic detachable design for versatile use.



Image: Overview of the Harvopu Rotating Magnetic Detachable Keyboard Case.

2. COMPATIBILITY

This keyboard case is compatible with the following iPad models:

- iPad (A16) 11th Generation 11-inch 2025 (Models: A3354, A3355, A3356)
- iPad 10th Generation 10.9-inch 2022 (Models: A2696, A2757, A2777)

To confirm your iPad model number, check the back of your tablet for the 'AXXXX' number, or navigate to **Settings > General > About** and tap the 'M' part number to reveal the 'A' model number.

Compatibility



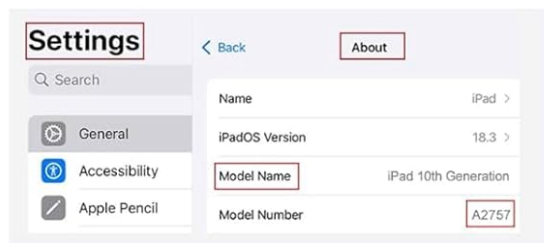
✓ for iPad (A16) 11 inch 2025
Models: A3354 / A3355 / A3356

✓ for iPad 10th 10.9 inch 2022
Models: A2696 / A2757 / A2777

How to find your model?

Option 1

1. Open settings > General > About
2. Tap the M part number to reveal the A model number



Option 2

- Look on the A model number on the back of your tablet



Image: Visual guide for identifying compatible iPad models and their corresponding model numbers.

3. SETUP INSTRUCTIONS

3.1 Case Installation

To install your iPad into the case:

1. Align your iPad with the clear protective shell.
2. Gently press the iPad into the shell until it snaps securely into place. Ensure all edges are properly seated.
3. The case features a magnetic detachable design, allowing you to easily attach or detach the keyboard section as needed.

Magnetic Detachable Keyboard Case

Magnetic keyboard easy to install and remove



Image: Demonstration of installing the iPad into the magnetic detachable keyboard case.

3.2 Keyboard Connection

Follow these steps to connect the keyboard to your iPad via Bluetooth:

1. Switch the keyboard's power **ON/OFF** button to the **ON** position.
2. On the keyboard, press and hold the **Fn + C** keys simultaneously for 3 seconds. The Bluetooth indicator light will begin to flash.
3. On your iPad, go to **Settings > Bluetooth** and toggle Bluetooth **ON**.
4. In the list of 'Other Devices', search for "Bluetooth Keyboard" and tap to connect.
5. Once successfully paired, the keyboard will automatically connect to your iPad whenever it is powered on and Bluetooth is enabled on your iPad.

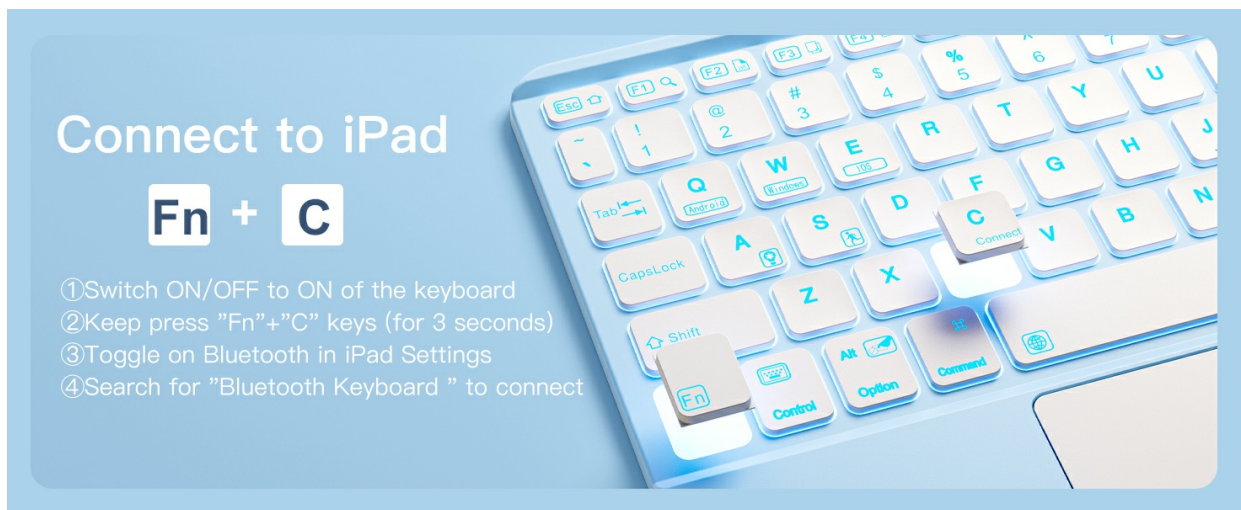


Image: Visual steps for Bluetooth keyboard pairing with the iPad.

3.3 System Switching

The keyboard supports seamless switching between different operating systems:

- Press **Fn + E** to customize for the iOS system.
- Press **Fn + Q** to customize for the Android system.
- Press **Fn + W** to customize for the Windows system.

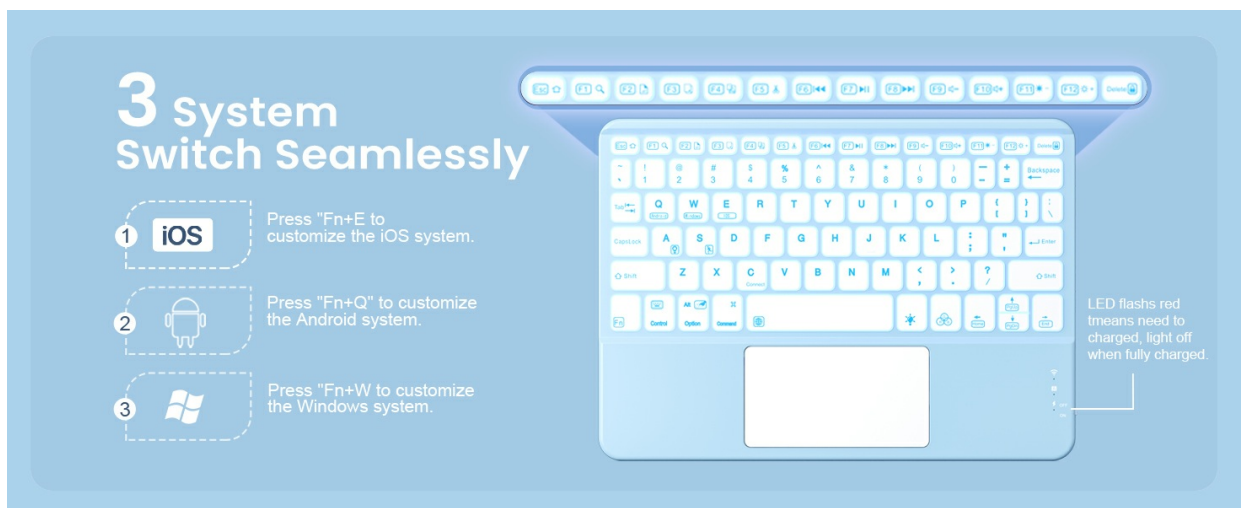


Image: Keyboard shortcuts for switching between different operating systems.

3.4 Video Demonstration

Watch this video for a visual guide on the installation, rotation, and keyboard connection process:

Your browser does not support the video tag.

Video: Demonstration of the Harvopu Rotating Detachable Keyboard Case for iPad, including installation, rotation, and keyboard connection.

4. OPERATING INSTRUCTIONS

4.1 Multi-Angle Viewing and Rotation

The case features two precision-cut grooves and a 360-degree rotating mechanism, allowing for flexible viewing angles in both landscape and portrait modes. This design is ideal for various activities such as watching videos, video calls, or typing.

360° Rotating Magnetic Detachable



Image: The 360-degree rotating feature of the case, demonstrating various viewing orientations.

4.2 Trackpad Functionality

The integrated multi-touch trackpad allows for precise navigation and gesture control on your iPad. This enhances productivity for tasks like document editing and web browsing.

- **Smooth Touchpad:** Single-finger tap for click.
- **Two-finger Scroll:** Use two fingers to scroll up or down.
- **Mouse Right Button:** Two-finger tap for right-click functionality.
- **Open App Switcher:** Use specific gestures (refer to iPadOS settings for customization).
- **Switch Active Window:** Use specific gestures (refer to iPadOS settings for customization).



Image: Visual representation of trackpad gestures and their functions.

4.3 Backlit Keyboard

The keyboard features 7-color backlighting with 3 adjustable brightness levels, allowing you to type comfortably in various lighting conditions.

- To turn on/off or adjust brightness, use the dedicated backlight key (often represented by a light bulb icon).
- To change between the 7 colors, use the color cycle key (often represented by a color palette icon).



7 Colors Backlight

Turn on/ Adjust
Brightness/ Off



Change 7 Colors
Backlight



Image: The keyboard displaying various backlight colors and brightness levels.

4.4 Pencil Holder

The case includes a built-in pencil holder for convenient storage and access to your stylus (pencil not included).

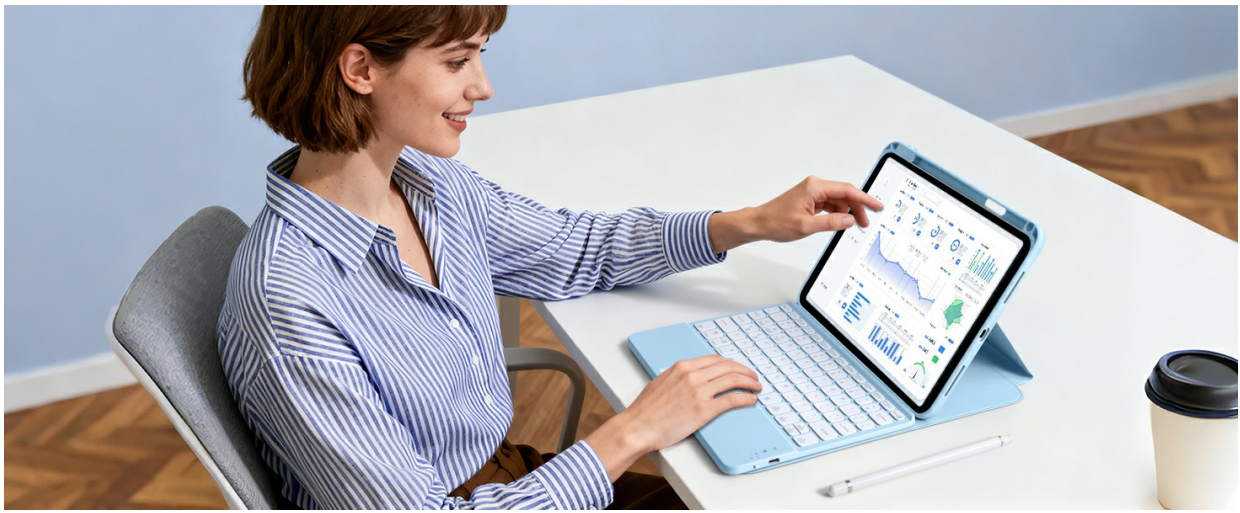


Image: Features of the case including the pencil holder, magnetic detachment, precise cutouts, and drop protection.

4.5 Auto Wake/Sleep Function

The case supports the iPad's auto wake/sleep function. Closing the case will put your iPad to sleep, and opening it will wake it up, conserving battery life.

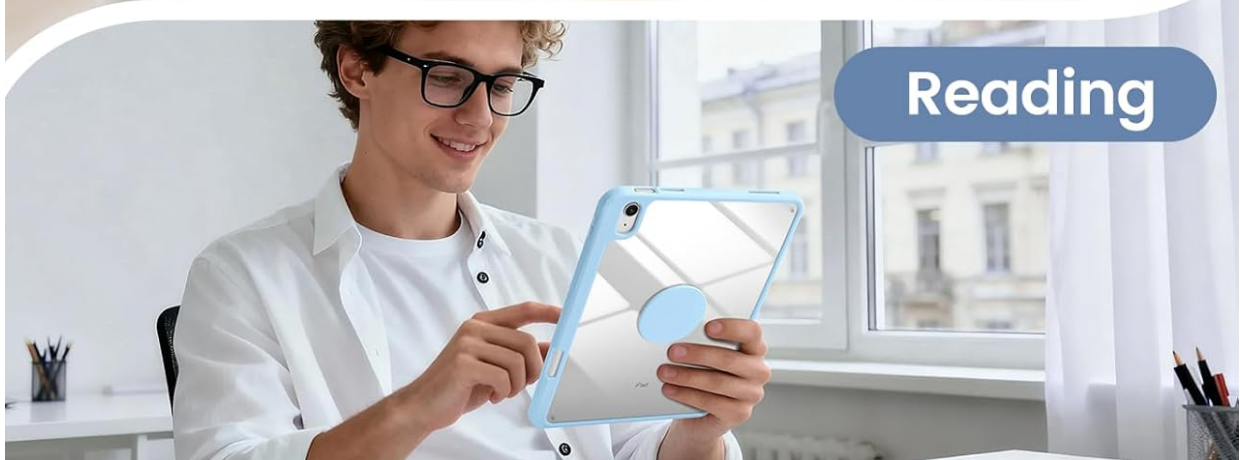
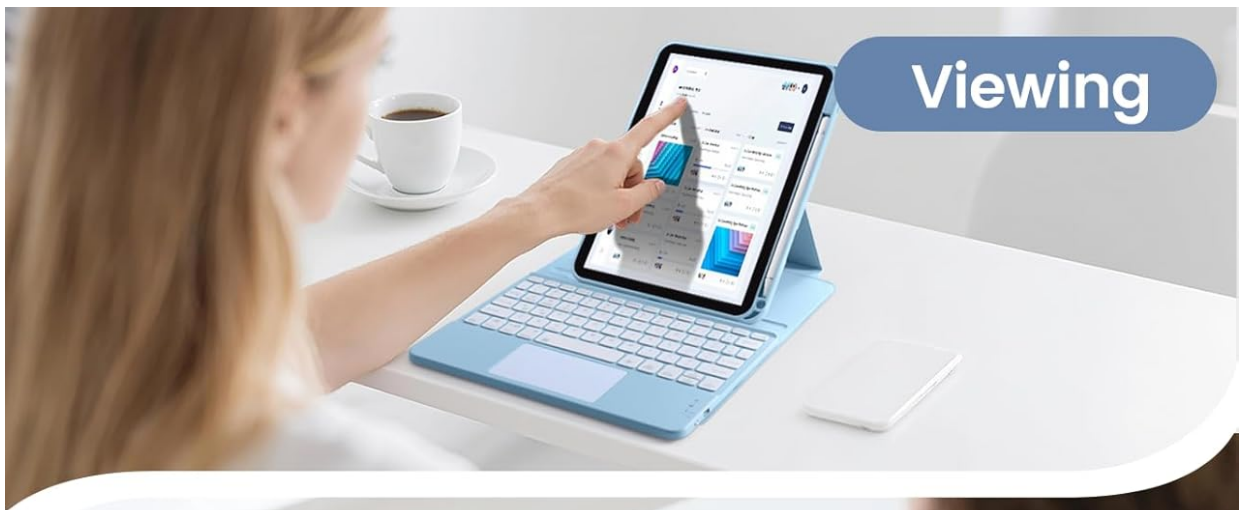


Image: Different usage modes (viewing, typing, reading) demonstrating the versatility of the case.

5. MAINTENANCE

5.1 Cleaning Instructions

The case is crafted from a soft, stain-resistant PU material. To clean:

- Wipe the surface with a soft, damp cloth.
- Avoid using harsh chemicals or abrasive cleaners, as these may damage the material.

Graded Stain-resistant Case

Easily wipe, give your device a sleek look



Image: Demonstration of cleaning the stain-resistant case material.

5.2 Battery and Charging

The keyboard is powered by a built-in 420mAh battery and charges via a Type-C port.

- A full charge takes approximately 2-3 hours.
- The keyboard offers up to 240 hours of working time (with backlight off).
- It has a long standby time of up to 90 days.
- The keyboard will automatically enter energy-saving mode if not used for 15 minutes.



Image: Details on the Type-C charging port and battery performance.

6. TROUBLESHOOTING

6.1 Keyboard Not Connecting

- Ensure the keyboard is powered on.
- Verify Bluetooth is enabled on your iPad.
- Re-initiate pairing by pressing **Fn + C** on the keyboard and searching for "Bluetooth Keyboard" in your iPad's Bluetooth settings.
- Check if the keyboard battery is charged.
- If issues persist, try restarting both your iPad and the keyboard.

6.2 Trackpad Not Responding

- Ensure the keyboard is connected via Bluetooth.
- Check iPadOS settings for trackpad gestures and ensure they are enabled.
- Clean the trackpad surface to remove any debris.

6.3 Backlight Not Working

- Press the backlight key to cycle through brightness levels and colors.
- Ensure the keyboard battery is sufficiently charged.

7. SPECIFICATIONS

Feature	Detail
Product Dimensions	9.75 x 5.91 x 0.25 inches
Item Weight	1.7 pounds
Manufacturer	Harvopu
Batteries	1 Lithium Polymer battery required (included)
Compatible Devices	iPad (A16) 11th Gen (A3354/A3355/A3356), iPad 10th Gen (A2696/A2757/A2777)
Connectivity Technology	Bluetooth
Keyboard Description	Multi Functional
Color	Sky Blue (Note: Color may vary by specific product variant)
Power Source	Battery Powered
Keyboard Layout	QWERTY
Minimum Required OS	iPadOS 13.4

8. WARRANTY AND SUPPORT

Your purchase includes:

- 1 x Case for iPad 11th generation 2025 or for iPad 10th generation 2022
- 1 x Touchpad Keyboard
- 1 x Type-C Charging Cable
- 1 x User Manual (this document)

For any questions regarding the product model or function, please refer to your purchase history or contact customer support through the retailer where the product was purchased.