

[Manuals.plus](#) /

> [Veken](#) /

> Veken All Metal 10" Brushed Nickel Shower Head with Handheld Instruction Manual

Veken SHC7V202

Veken All Metal 10" Brushed Nickel Shower Head with Handheld Instruction Manual

Model: SHC7V202

INTRODUCTION

Thank you for choosing the Veken All Metal 10" Brushed Nickel Shower Head with Handheld. This manual provides detailed instructions for the proper installation, operation, and maintenance of your new shower system. Please read this guide thoroughly before installation and retain it for future reference.

SAFETY INFORMATION

Observe all local plumbing and building codes. Ensure water supply is turned off before beginning installation. Use appropriate tools and wear safety glasses. If you are unsure about any part of the installation, consult a qualified plumber.

PACKAGE CONTENTS

Verify that all components are present before beginning installation:

- 10" Rain Shower Head x1
- Handheld Shower Head x1
- Hose x1
- Integrated Tri-Arm Extension x1
- Slide Bar with Bracket x1
- Spare Washers x2
- 1m Teflon Tape x1
- Wrench x1

Everything You Need Is Included



Image: All included components for the Veken shower system.

SETUP AND INSTALLATION

This shower system is designed for easy DIY installation. No plumber is typically required. Ensure your existing shower arm is 3 inches or longer for compatibility.

Installation Steps

- 1. Prepare the Shower Arm:** Ensure your existing shower arm is clean and free of debris. Apply plumber's tape (Teflon tape) clockwise around the threads of your existing shower arm.
- 2. Attach the Diverter:** Screw the integrated tri-arm extension (diverter) onto the shower arm. Hand-tighten, then use the provided wrench for a final quarter-turn, ensuring it is securely fastened and facing the desired direction.
- 3. Install the Rain Shower Head:** Screw the 10" rain shower head onto the top outlet of the tri-arm extension. Ensure a washer is in place before tightening.
- 4. Mount the Slide Bar:** Attach the slide bar to the vertical arm of the tri-arm extension. Adjust its position as needed and tighten the connection.
- 5. Connect the Handheld Shower Head:** Connect one end of the stainless steel hose to the bottom outlet of the tri-arm extension and the other end to the handheld shower head. Place the handheld shower head into its bracket on the slide bar.

Easy Installation in 5 Steps

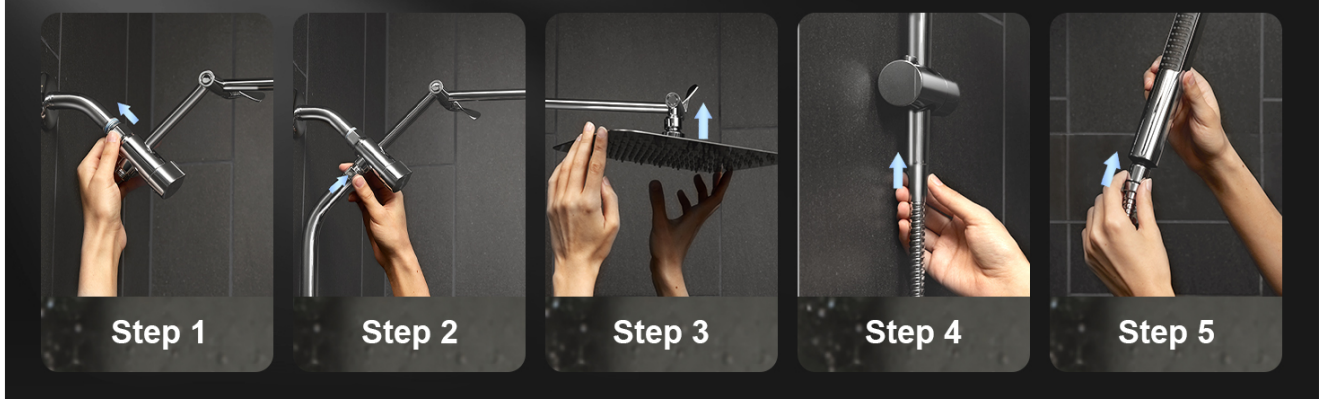


Image: Visual guide for the 5-step installation process.



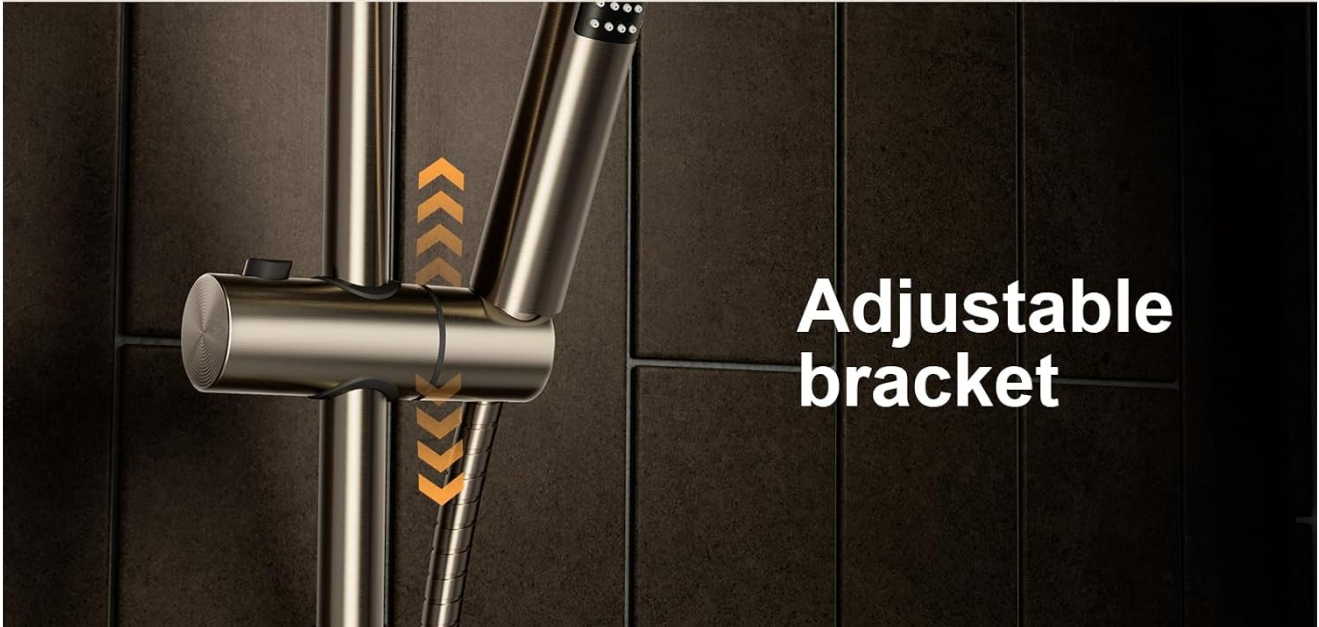
Image: Compatibility check for shower arm length.

Adjusting Height and Angle

The 15-inch metal extension arm allows for personalized height and angle adjustment of the rain shower head. The 13-inch adjustable slide bar provides flexible positioning for the handheld shower head.



360°
rotation



**Adjustable
bracket**

Image: Adjustments for the extension arm and rain shower head.

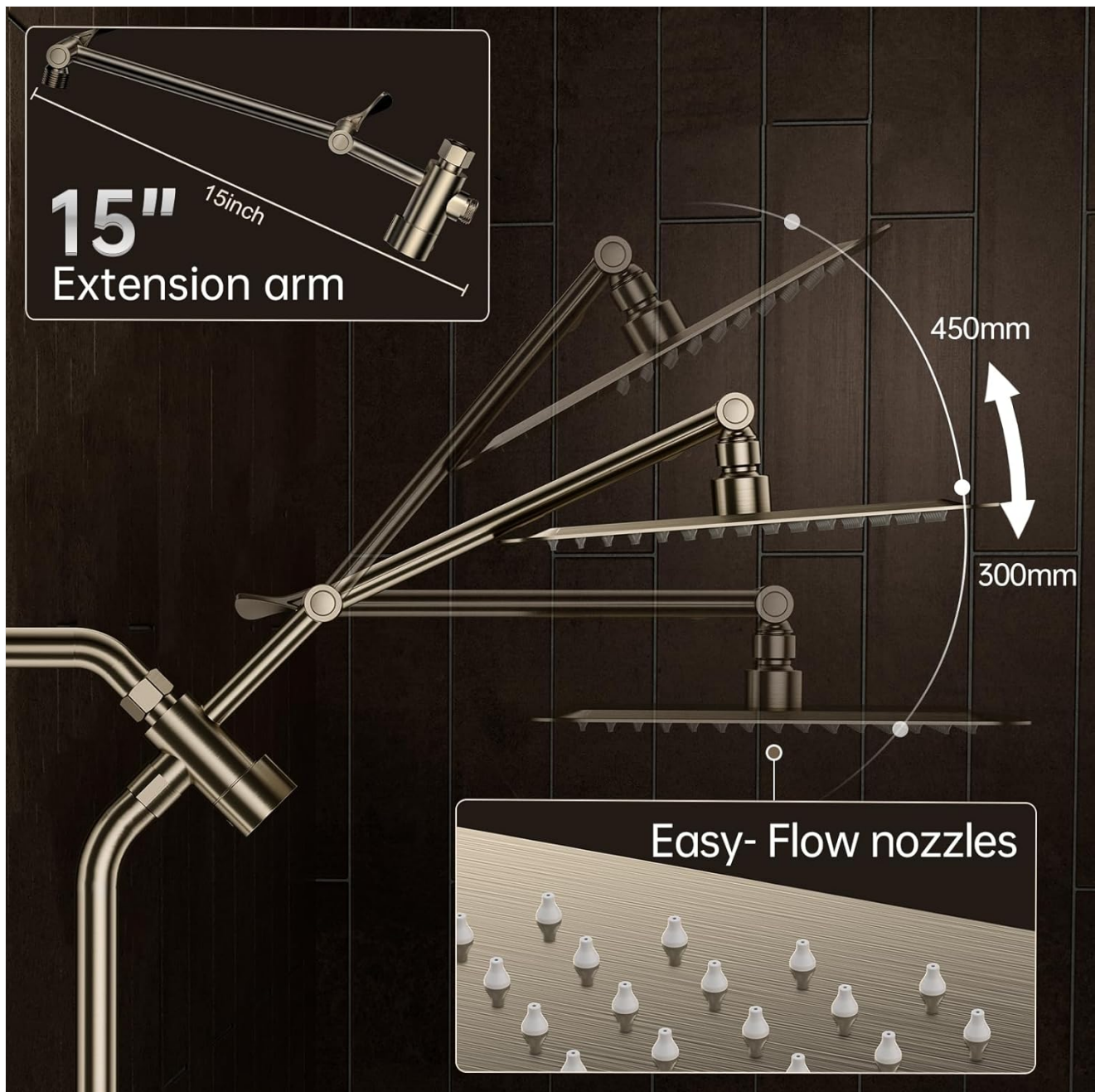


Image: 360-degree rotation and adjustable handheld bracket.

Your browser does not support the video tag.

Video: Official Veken Metal Shower Head overview, demonstrating installation and features.

OPERATING INSTRUCTIONS

Spray Modes

Your Veken shower system offers three distinct spray modes, controlled by rotating the 3-way diverter on the tri-arm extension:

- **Rainfall Spray:** Enjoy a broad, even coverage from the 10-inch square shower head for a spa-like experience.
- **Handheld Spray:** Use the detachable handheld sprayer for targeted rinsing.
- **Dual Spray (Rainfall & Handheld):** Operate both the overhead and handheld sprays simultaneously for enhanced coverage and comfort.



3 SPRAY MODES

Rotate the 3-way diverter to customize different sprays you prefer



Image: Three available spray modes and diverter control.

Power Wash Feature

The handheld sprayer includes a built-in power jet feature. This concentrated stream is ideal for rinsing soap scum, cleaning shower walls and tiles, and reaching tight corners. It is also useful for tasks like pet bathing or assisting seniors with showering.



Image: Handheld power jet for cleaning.

MAINTENANCE

Regular maintenance ensures optimal performance and extends the lifespan of your shower system.

Cleaning the Shower Heads

- To prevent mineral buildup and maintain spray performance, regularly wipe the nozzles of both the rain shower head and handheld shower head.
- For stubborn mineral deposits, gently rub the rubber nozzles with your finger or a soft brush.
- Clean the exterior surfaces with a soft cloth and mild soap or a non-abrasive bathroom cleaner. Avoid harsh chemicals or abrasive scrubbers, as these can damage the brushed nickel finish.

Hose and Connections

- Periodically check all connections for leaks. If a leak is detected, ensure the connection is tight and that the rubber washer is properly seated. Replace washers if necessary.

- Inspect the hose for any signs of wear or damage. Replace the hose if cracks or leaks appear.

TROUBLESHOOTING

If you encounter issues with your Veken shower system, refer to the following common problems and solutions:

Problem	Possible Cause	Solution
Low water pressure from shower heads	Mineral buildup in nozzles or water restrictor.	Clean nozzles by rubbing them. Check for and clean any debris in the water restrictor (if applicable and removable per local regulations). Ensure main water supply is fully open.
Leaking at connections	Loose connection or worn washer.	Tighten connections. Ensure plumber's tape is applied correctly. Replace rubber washers if they appear worn or damaged.
Water not diverting correctly	Diverter not fully rotated or internal debris.	Ensure the diverter handle is fully turned to the desired position. If issue persists, turn off water, disassemble diverter, and check for debris.
Handheld shower head not staying in bracket	Bracket loose or improperly adjusted.	Tighten the bracket on the slide bar. Adjust the angle of the bracket to securely hold the handheld shower head.

If these steps do not resolve the issue, please contact Veken customer support.

SPECIFICATIONS

Feature	Detail
Brand	Veken
Model Number	SHC7V202
UPC	810191342533
Material	Stainless Steel
Finish Type	Brushed Nickel
Installation Type	Wall Mounted
Rain Shower Head Size	10"L x 10"W
Hose Length	60 Inches
Extension Arm Length	15 Inches
Slide Bar Length	13 Inches
Flow Rate	2.5 Gallons Per Minute
Special Features	Adjustable Height, Detachable Handheld, Power Wash Jet

WARRANTY AND SUPPORT

Warranty Information

Veken products are manufactured to high-quality standards. For specific warranty details, please refer to the warranty card included with your product or visit the official Veken website. Keep your purchase receipt as proof of purchase for any warranty claims.

Customer Support

If you have any questions, require assistance with installation, or need to report a defective part, please contact Veken customer support. You may also find additional information in the [User Guide \(PDF\)](#) available online.

Manufacturer: XIAMEN SUITEC SANITARY WARES & FITTING CO., LTD