

realme 14T 5G

realme 14T 5G Smartphone User Manual

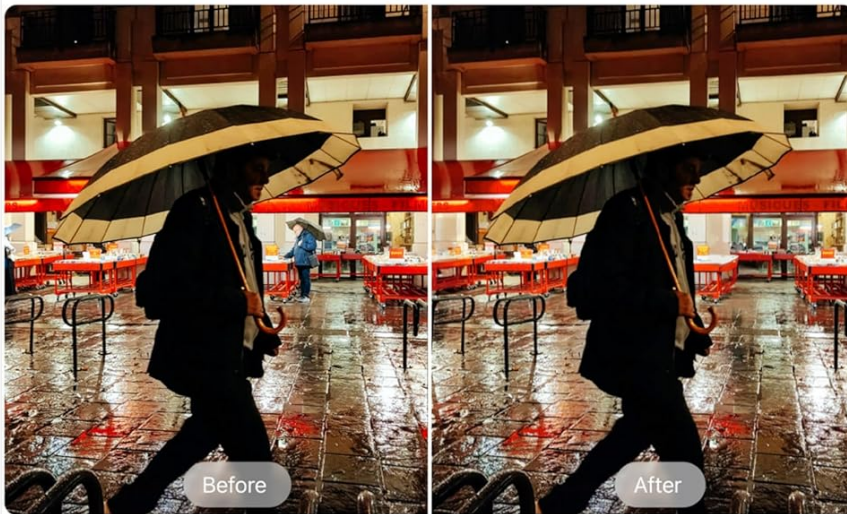
Model: RMX5078

1. INTRODUCTION

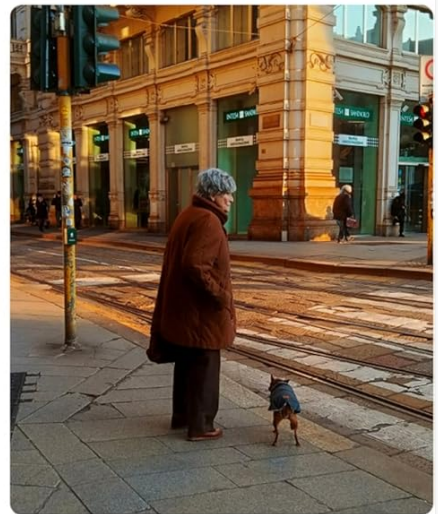
This manual provides essential information for using your new realme 14T 5G smartphone. Please read this guide thoroughly to ensure proper operation and to maximize your device's features. Keep this manual for future reference.

Flagship AI 50MP Imaging

Turn Moments into Masterpieces



AI Eraser



Crystal Clear Detail



Flagship AI 50MP Imaging

Image: Front and back view of the realme 14T 5G smartphone in Obsidian Black.

2. WHAT'S IN THE BOX

Verify that all items are present in your product packaging:

- 1 realme 14T 5G Handset
- 1 USB Type-C Cable
- 1 45W Fast Charging Adapter
- 1 SIM Ejector Tool
- 1 Protective Case
- 1 Quick Guide
- 1 Safety Guide

Top-Tier IP69 Water Resistance

Works Through Rain, Splashes and Drops

	Dropped in a Mug of Water	Dropped in a Pool	Washed with Jet Water	85°C Hot Water Wash
realme 14T ^{5G} IP69 & 68 & 66	✓	✓	✓	✓
IP66	✗	✗	✓	✗
IP64	✓	✗	✗	✗
IP54	✗	✗	✗	✗



Image: Contents of the realme 14T 5G retail box, showing the phone, charger, and USB cable.

Your browser does not support the video tag.

Video: An unboxing demonstration of the realme 14T 5G, showcasing the phone and its accessories.

3. SETUP

3.1 Inserting the SIM Card

1. Locate the SIM card tray on the side of your device.
2. Insert the SIM ejector tool into the small hole next to the tray and press firmly until the tray pops out.
3. Place your Nano-SIM cards (and microSD card, if applicable) into the designated slots on the tray. Ensure the gold contacts face downwards.
4. Carefully reinsert the tray into the phone.

3.2 Initial Power On and Configuration

1. Press and hold the Power button until the realme logo appears.

2. Follow the on-screen instructions to select your language, region, connect to Wi-Fi, and set up your Google account.
3. Configure security features such as fingerprint unlock or facial recognition.

4. OPERATING YOUR DEVICE

4.1 Display

The realme 14T 5G features a 6.67-inch FHD+ AMOLED display with a 120Hz refresh rate for smooth visuals. It offers up to 2100 nits peak brightness for clear visibility in various lighting conditions and is TÜV Rheinland certified for eye comfort.

AI FLAGSHIP IMAGING

Ai Eraser Image | 50MP Ai Camera



Image: Visual representation of the realme 14T 5G's AMOLED display features, highlighting brightness, vivid colors, immersive view, smooth visuals, and eye comfort.

4.2 Camera

Capture high-quality photos and videos with the 50MP AI Dual Rear Camera and 16MP Sony Front Camera. Features include Night Mode, HDR, Street View, Dual View Video, and AI scene detection.

realme 14T 5G

Segment's Brightest
AMOLED DISPLAY



**IP69 Top-Tier
Waterproof**



6000mAh
Long-Lasting Battery

45W
Fast Charge



Image: Examples of AI 50MP imaging on the realme 14T 5G, demonstrating AI Eraser and clear detail capabilities.

4.3 Performance

Powered by the MediaTek Dimensity 6300 5G processor (6nm, up to 2.4GHz), the device offers balanced efficiency and speed for daily applications and casual gaming. It includes 8GB RAM with up to 18GB Dynamic RAM expansion for smoother multitasking and 128GB onboard storage, expandable up to 2TB via microSD.

Ai FLAGSHIP IMAGING

Ai Eraser Image | 50MP Ai Camera



Image: Details of the Dimensity 6300 5G Chipset, highlighting its 6nm process, 8-cores, GPU performance, and power efficiency enhancements.

4.4 Battery and Charging

The 6000mAh battery provides multi-day endurance. The device supports 45W fast charging, allowing for quick replenishment of battery capacity.

Super Bright AM LED DISPLAY



Sunlight Ready
2100nits Peak Brightness



Vivid Colors
111% DCI-P3



Immersive View
92.7% Screen Ratio



Smooth Visuals
120Hz Refresh Rate



Eye Comfortable



Image: Illustration of the realme 14T 5G's 6000mAh battery and 45W fast charging capability.

4.5 Connectivity

Enjoy robust connectivity with Dual-SIM 5G NR, 4G LTE, Wi-Fi 6, Bluetooth 5.4, and multi-band GNSS (GPS, GLONASS, Galileo, BeiDou, A-GPS). USB-C supports charging, data transfer, and OTG functionality.

4.6 Special Features and Operating System

The realme 14T 5G runs on Android 15 with realme UI 6.0, offering a streamlined interface, dynamic RAM expansion, privacy controls, and battery modes. On-screen biometrics provide quick and secure unlocking. Dual stereo speakers enhance audio experience.

Bionic VC Cooling System

7°C↓



Cooler with 7°C CPU Temperature Drop

Image: Diagram illustrating the Dual Stereo Speaker system of the realme 14T 5G, showing sound projection and network improvements.

Your browser does not support the video tag.

Video: A promotional video highlighting the realme 14T 5G's features, including its design, water resistance, battery, and performance.

Your browser does not support the video tag.

Video: A promotional video showcasing the realme 14T 5G's design, camera capabilities, and charging features.

5. MAINTENANCE

5.1 General Care

- Keep your device clean using a soft, dry cloth.
- Avoid exposing the phone to extreme temperatures or direct sunlight for prolonged periods.
- Use only realme-approved accessories.

5.2 Water and Dust Resistance

The realme 14T 5G features IP68 and IP69 water and dust resistance, providing protection against splashes, light rain, and immersion under specific conditions. While resistant, it is not waterproof. Avoid intentional submersion or exposure to high-pressure water jets.



Slim, Light & Easy Grip

Image: Visual demonstrating the IP69 water resistance of the realme 14T 5G, showing its ability to withstand rain, splashes, and drops.

6. TROUBLESHOOTING

If you encounter issues with your device, try the following steps:

- **Restart the device:** A simple restart can resolve many minor software glitches.
- **Check for software updates:** Ensure your device is running the latest realme UI and Android version. Go to Settings > About device > Up to date.
- **Clear app cache:** If a specific app is causing issues, try clearing its cache in Settings > Apps > [App Name] > Storage usage > Clear cache.
- **Factory reset (last resort):** If problems persist, you may need to perform a factory reset. **Warning: This will erase all data on your phone. Back up important data before proceeding.** Go to Settings > System settings > Back up and reset > Reset phone > Erase all data.
- **Contact Support:** If the issue cannot be resolved, contact realme customer support or visit an authorized service center.

7. SPECIFICATIONS

Feature	Detail
Model Number	RMX5078
Operating System	Android 15 with realme UI 6.0
Processor	MediaTek Dimensity 6300 5G (6nm, up to 2.4 GHz)
RAM	8 GB (up to 18GB Dynamic RAM)
Storage	128 GB (expandable up to 2TB via microSD)

Display	6.67-inch FHD+ AMOLED, 120Hz Refresh Rate, 2100 nits Peak Brightness
Rear Camera	50MP AI Dual Camera
Front Camera	16MP Sony Front Camera
Battery	6000 mAh Lithium Ion
Charging	45W Fast Charging
Connectivity	5G NR, 4G LTE, Wi-Fi 6, Bluetooth 5.4, GPS
Water & Dust Resistance	IP68 and IP69 Certified
Dimensions	16.31 x 7.56 x 0.8 cm
Weight	196 g
Audio Jack	Type C Earphone Jack

8. WARRANTY AND SUPPORT

Your realme 14T 5G handset comes with a 1-year brand warranty. In-box accessories are covered by a 6-month brand warranty across India. This warranty covers manufacturing defects only. Physical damage, liquid damage, or unauthorized repairs are not covered.

For warranty claims or technical support, please contact realme authorized service centers or their official support channels. You can find more information on the realme website or through the contact details provided in your safety guide.