

WOLFBOX X3 PRO

WOLFBOX X3 PRO Dual Channel Dash Cam Instruction Manual

Model: X3 PRO

1. INTRODUCTION

The WOLFBOX X3 PRO is a high-performance dual-channel dash cam designed to record both front and rear views of your vehicle. Equipped with advanced features such as dual STARVIS 2 IMX675 sensors, 2.5K resolution, Electronic Image Stabilization (EIS), Advanced Driver Assistance System (ADAS), 5.8GHz Wi-Fi, and built-in GPS, it provides reliable evidence and enhances driving safety. This manual provides detailed instructions for setup, operation, and maintenance to ensure optimal use of your device.

2. WHAT'S IN THE BOX

Please check the package contents to ensure all items are present:

- 1 x WOLFBOX X3 PRO 60FPS Dash Cam (Front Camera)
- 1 x 2.5K Rear Cam (Rear Camera)
- 1 x 11.5FT Car Charger
- 1 x 21.3FT Rear Camera Cable
- 1 x Adhesive Mount with Built-in GPS
- 1 x 64GB Memory Card
- 2 x Electrostatic Stickers
- 5 x Cable Clips
- 1 x Quick Guide
- 1 x User Manual
- 1 x Car Wire Trim Tool



Image: All components included with the WOLFBOX X3 PRO Dash Cam, including front and rear cameras, cables, mount, and accessories.

Your browser does not support the video tag.

Video: An unboxing video demonstrating the contents of the WOLFBOX X3 PRO package.

3. PRODUCT OVERVIEW

The WOLFBOX X3 PRO Dash Cam is engineered for superior performance and reliability. Key features include:

- **Dual STARVIS 2 IMX675 Sensors & HDR Recording:** Delivers superior night vision with reduced noise and motion blur, ensuring well-balanced images in low-light conditions.
- **High Resolution & Frame Rate:** Front camera records at 2.5K (2560*1440P) 60fps, and the rear camera at 2.5K (2560*1440P) 30fps, capturing license plates and road signs with precision.
- **EIS Image Stabilization:** Enhanced image stabilization technology detects and corrects vehicle vibrations in real-time for ultra-stable recordings on various terrains. (Note: EIS operates at 2.5K 30fps).
- **Driver Assistance (ADAS) & Voice Control:** Proactively alerts to potential road hazards (forward collision, lane departure, stop & go) and allows intuitive control via 12 voice commands or the 3-inch touch screen.
- **Ultra-Fast 5.8GHz Wi-Fi & GPS:** Enables quick video transfers to the WOLFBOX Auto app for easy footage preview, download, and sharing. Integrated GPS logs driving speed and route directly into recordings.
- **Loop Recording & G-Sensor:** Automatically overwrites the oldest files when the memory card is full. The G-Sensor detects sudden impacts and locks the current footage to prevent overwriting.
- **Parking Monitor:** Provides 24/7 parking surveillance with collision detection and time-lapse monitoring (requires a separate hardwiring kit).

4. SETUP & INSTALLATION

4.1 Front Camera Installation

1. Choose a suitable spot on the front windshield, ideally behind the rearview mirror, ensuring it does not obstruct

your view.

2. Clean the chosen area of the windshield thoroughly.
3. Apply an electrostatic sticker to the cleaned area.
4. Remove the blue protective film from the adhesive on the GPS mount.
5. Attach the dash cam with the GPS mount to the electrostatic sticker, pressing firmly for secure adhesion.
6. Adjust the camera angle to your preferred view.

60FPS Ultra Smooth Video
2.5K 60fps+2.5K 30fps high recording

2X Smoother Frame Rate

UPGRADED 2.5K



Image: The WOLFBOX X3 PRO Front Dash Cam mounted on a car's windshield, showing its compact design.

4.2 Rear Camera Installation

1. Choose a suitable spot on the rear windshield, ensuring a clear view of the road behind.
2. Clean the chosen area of the rear windshield thoroughly.
3. Apply an electrostatic sticker to the cleaned area.
4. Remove the blue protective film from the adhesive on the rear camera mount.
5. Attach the rear camera to the electrostatic sticker, pressing firmly.

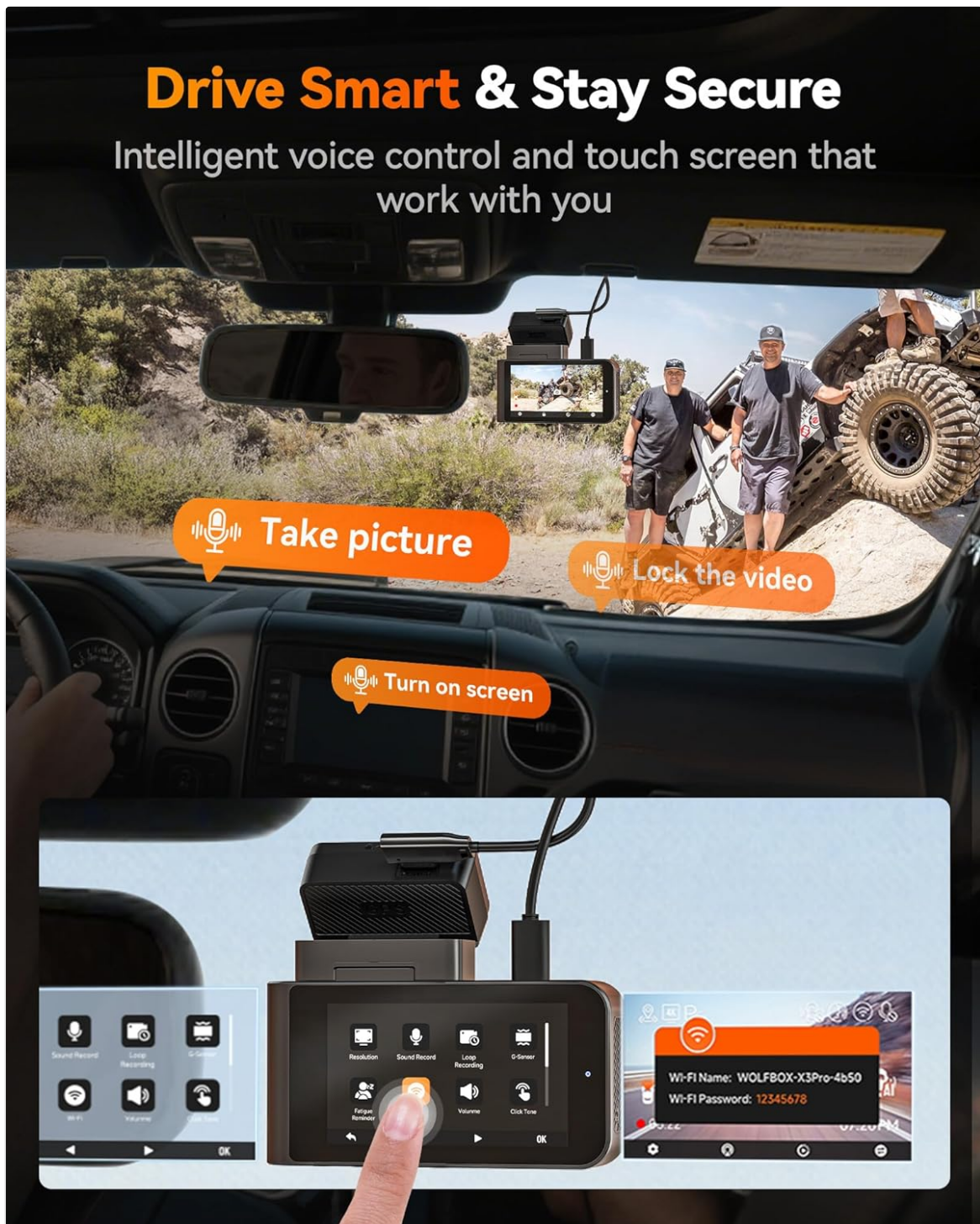


Image: The WOLFBOX X3 PRO Rear Camera mounted on the interior of a car's rear windshield.

4.3 Power Connection

1. Connect the USB-C end of the car charger to the GPS mount on the front camera.
2. Plug the car charger into your vehicle's 12V power outlet (cigarette lighter socket).
3. Route the power cable neatly along the front windshield, down the A-pillar, and under the passenger seat foot pad to the 12V outlet, using the provided cable clips and trim tool to hide the cable.
4. Connect the USB-C end of the rear camera cable to the 'REAR' port on the front camera.
5. Route the rear camera cable along the roofline and down to the rear camera, tucking it into the gaps for a clean installation.
6. Power on the vehicle to test the dash cam. Ensure both front and rear cameras display video feed.

Your browser does not support the video tag.

Video: A detailed installation guide for the WOLFBOX X3 PRO Dash Cam, showing cable routing and connections.

4.4 App Connection

1. Download the "WOLFBOX Auto" app from your smartphone's app store.
2. Turn on the dash cam's Wi-Fi feature via the touchscreen menu.
3. On your smartphone, disable Bluetooth and go to your Wi-Fi settings.
4. Select the WOLFBOX X3 PRO network (e.g., WOLFBOX-X3Pro-4f40) and enter the default password (12345678).
5. Open the WOLFBOX Auto app and connect to your dash cam. You can now preview footage, manage settings, and download videos.

5. OPERATING INSTRUCTIONS

5.1 Touch Screen Interface

The WOLFBOX X3 PRO features a 3-inch touch screen for easy navigation and control. Swipe through menus and tap icons to access various settings and functions.

5.2 Voice Control

Control your dash cam hands-free using voice commands for a safer driving experience. Available commands include:

- "Take picture"
- "Lock the video"
- "Turn on screen"
- And more (refer to the user manual for a complete list).



Image: The WOLFBOX X3 PRO Dash Cam displaying its voice control capabilities and touch screen interface.

6. ADVANCED FEATURES

6.1 Dual STARVIS 2 IMX675 & HDR Recording

The X3 PRO utilizes dual Sony STARVIS 2 IMX675 sensors combined with HDR technology to provide exceptional image quality, especially in low-light conditions. This significantly reduces noise and motion blur, ensuring clear and balanced recordings day and night. HDR recording is available when the front camera is set to 2.5K 30fps.

Enhanced Super Night Vision

With dual Sony STARVIS 2 IMX675 & HDR, X3 PRO dash cam delivers ultra-clear videos day or night by auto-balancing light and shadows.



2.5x↑
Dynamic range

2.5x↑
Low light performance

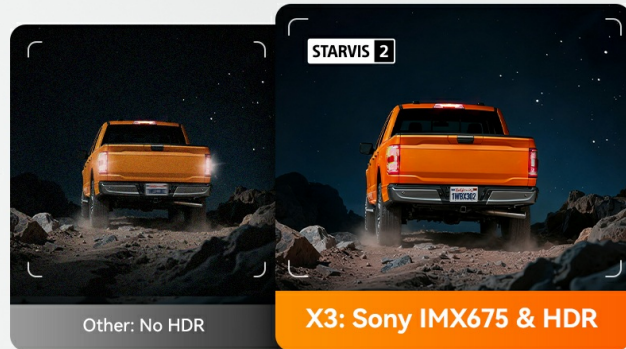


Image: Illustration of the WOLFBOX X3 PRO's dual STARVIS 2 IMX675 sensors and HDR recording capability for enhanced night vision.

6.2 EIS Image Stabilization

Electronic Image Stabilization (EIS) technology actively detects and corrects vehicle vibrations, providing ultra-stable and smooth video footage. This is particularly beneficial when driving on bumpy roads or during sudden maneuvers, ensuring clarity in critical moments. EIS is active when recording at 2.5K 30fps.

Touch Screen

Voice Control

ADAS
(FCW/LDW/Stop&Go)

STARVIS 2 and its logo are registered trademarks or trademarks of Sony Group Corporation or its affiliates.

Upgraded EIS Stabilization

Equipped with Electronic Image Stabilization technology, the X3 PRO reduces image shake and enhances video stability when driving on bumpy mountain roads, during sudden braking, or at high speeds – capturing every moment with clarity.

*Stabilization unavailable at 60fps.

Image: Visual comparison showing the effectiveness of EIS Image Stabilization on the WOLFBOX X3 PRO Dash Cam.

6.3 Driver Assistance System (ADAS)

The integrated ADAS technology provides proactive alerts to enhance driving safety. Features include:

- **Forward Collision Warning (FCW):** Alerts you when you are too close to the vehicle ahead.
- **Lane Departure Warning (LDW):** Notifies you if your vehicle drifts out of its lane without signaling.
- **Stop & Go:** Informs you when traffic ahead starts moving.

60FPS Ultra -Smooth Recording

X3 PRO dash cam elevates the front camera's frame rate to 60fps, delivering twice the video smoothness every second. With enhanced 60fps recording X3 PRO captures fast motion in exceptional clarity.

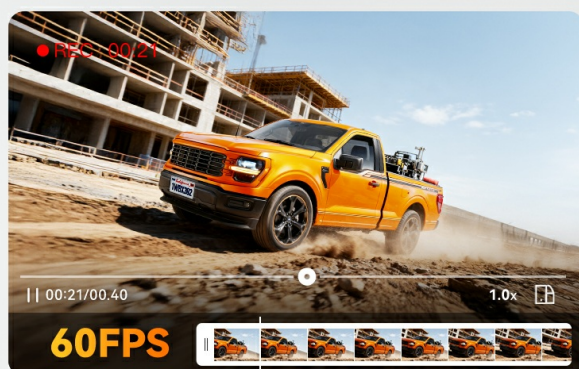


Image: Illustration of the WOLFBOX X3 PRO's Advanced Driver Assistance System (ADAS) providing alerts for various road hazards.

6.4 5.8GHz Wi-Fi & GPS

The X3 PRO features ultra-fast 5.8GHz Wi-Fi for seamless connectivity with the WOLFBOX Auto app, allowing for quick video transfers and real-time viewing. The built-in GPS module accurately logs your driving speed and route, embedding this crucial information directly into your video recordings for reliable evidence.

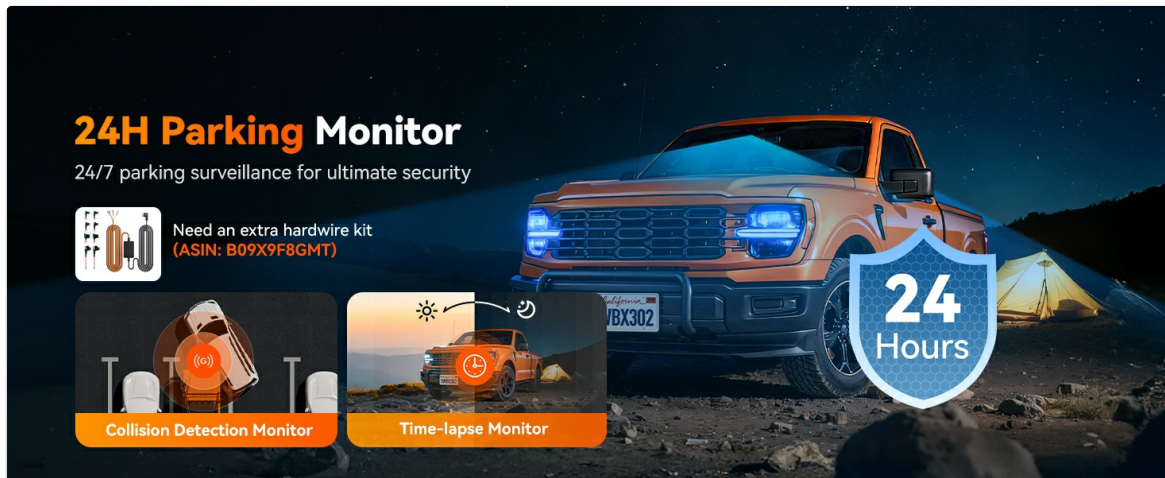


Image: The WOLFBOX X3 PRO Dash Cam demonstrating its 5.8GHz Wi-Fi connectivity for fast data transfer to a smartphone app, along with GPS tracking.

6.5 24H Parking Monitor

For continuous protection, the X3 PRO offers 24-hour parking surveillance. This feature includes collision detection monitoring and time-lapse monitoring, ensuring your vehicle is protected even when parked. Please note that the parking monitoring feature requires a separate hardwiring kit (ASIN: B09X9F8GMT) for continuous power.



Image: The WOLFBOX X3 PRO Dash Cam illustrating its 24-hour parking monitor features, including collision detection and time-lapse recording.

7. FILE MANAGEMENT

7.1 Loop Recording & G-Sensor

The dash cam utilizes loop recording, automatically overwriting the oldest files when the memory card is full. The integrated G-Sensor detects sudden impacts or collisions, automatically locking and protecting the current video segment from being overwritten, ensuring critical evidence is preserved.

880,000+
Customers have witnessed
the quality of WOLFBOX

- ✓ Easy to Install
- ✓ Easy to Use
- ✓ Good Quality
- ✓ Clear Image
- ✓ Night Vision
- ✓ Highly Recommend
- ✓ Driving Safety



Image: The WOLFBOX X3 PRO Dash Cam illustrating loop recording and G-Sensor features, showing how footage is managed on the SD card.

7.2 Accessing Footage

You can access your recorded footage in two primary ways:

- **Via WOLFBOX Auto App:** Connect your smartphone to the dash cam via 5.8GHz Wi-Fi to preview, download, and share videos directly from the app.
- **Via SD Card:** Remove the 64GB memory card from the dash cam and insert it into a computer's card reader to transfer and view files. Footage is organized into folders (e.g., LOCK for protected files, MOVIE for regular recordings) by date and time for easy retrieval.

8. MAINTENANCE

- **Cleaning:** Regularly clean the camera lenses and screen with a soft, dry cloth to ensure clear recordings. Avoid using abrasive cleaners.
- **SD Card Management:** Format the memory card periodically (e.g., once a month) to maintain optimal performance and prevent data corruption. Back up important footage before formatting.
- **Firmware Updates:** Check the WOLFBOX website or app for available firmware updates to ensure your dash cam has the latest features and improvements.

9. TROUBLESHOOTING

- **Dash Cam Not Powering On:** Check the car charger connection to the 12V outlet and the USB-C connection to the dash cam. Ensure the vehicle's ignition is on.
- **Recording Issues:** Ensure the memory card is properly inserted and formatted. Check if the card is full (loop recording should manage this, but errors can occur). Use a high-endurance Class 10 (U3) SD card.
- **Wi-Fi Connection Problems:** Ensure the dash cam's Wi-Fi is enabled. Disable Bluetooth on your smartphone before connecting to the dash cam's Wi-Fi network.
- **ADAS Alerts Not Functioning:** Ensure ADAS features are enabled in the settings menu. Calibrate the dash cam according to the user manual for accurate detection.
- **Poor Night Vision:** Ensure the lenses are clean. Verify that HDR recording is enabled (if applicable) and the camera is set to 2.5K 30fps for optimal night performance.

10. SPECIFICATIONS

Brand	WOLFBOX
Model Name	X3 PRO
Video Capture Resolution	1440p (2.5K)
Frame Rate	60 FPS (Front), 30 FPS (Rear)
Sensor	Dual STARVIS 2 IMX675
Screen Size	3 Inches
Connectivity Technology	Wi-Fi (5.8GHz)
Special Features	App Control, Built-In Display, Built-In GPS, Built-In Supercapacitor, Compact Design, Built-In WiFi, G-Sensor, Internal Memory, Loop Recording, Night Vision, Parking Monitor, Reverse Assist, Touch Screen, Voice Control
Included Memory Card Size	64 GB
Flash Memory Supported Size Maximum	512 GB
Mounting Type	Windshield Mount
Control Method	App, Touch, Voice

11. WARRANTY & SUPPORT

The WOLFBOX X3 PRO Dash Cam is protected by a **12-month warranty**. WOLFBOX offers attentive customer care to address any inquiries or issues you may encounter.

- **Warranty Period:** 12 Months
- **Return Policy:** 7 Days (for defects)
- **Email Support:** service@wolfbox.com
- **Phone Support:** +1 888 296 8399

For further assistance, please refer to the official WOLFBOX website or contact customer support directly.