

[Manuals.plus](#) /

> [KASUE](#) /

> KASUE Upgraded 2 Person Portable Infrared Steam Sauna Box (Model ZCSNJ-A) - Instruction Manual

KASUE ZCSNJ-A

KASUE Upgraded 2 Person Portable Infrared Steam Sauna Box (Model ZCSNJ-A) - Instruction Manual

Comprehensive guide for setup, operation, and maintenance of your KASUE sauna.

INTRODUCTION

Thank you for choosing the KASUE Upgraded 2 Person Portable Infrared Steam Sauna Box. This manual provides essential information for the safe and efficient use of your sauna. Please read it thoroughly before assembly and operation, and retain it for future reference.

PRODUCT FEATURES

- **Extra-Large Space:** Designed for two persons, measuring 71" x 49" x 36", allowing for comfortable movement, standing, or sitting on the included chairs.
- **Red Light Deep Renewal:** Features 660nm red light for deep tissue penetration, aiding in muscle soreness relief, post-workout recovery, and overall joint health.
- **Dual Steam Rapid Heating:** Equipped with two 3L steam generators and 360° steam outlets for quick and uniform heating, filling the cabin with steam in minutes.
- **Convenient Design:** Includes a built-in storage pouch for personal items, dual zippers for easy entry/exit, a transparent zippered window for ventilation, and a remote control for temperature and timing adjustments.
- **Superior Insulation:** Constructed with a 5-layer waterproof material for excellent heat retention, durability, easy cleaning, and compact storage.

PACKAGE CONTENTS

Please ensure all components are present and undamaged before beginning assembly.

Portable Steam Sauna



Image: All components included with the KASUE Portable Steam Sauna Box, laid out for inspection. This includes the sauna tent, various pipes for the frame, a red LED light strip, two remote controls, several types of connectors (tow-way and angular joints), hoses, two sealers, two pipe adapters, two transparent containers, and two folding chairs.

- Sauna Tent (1)
- Steam Generators (2)
- Folding Chairs (2)
- Red LED Light Strip (1)
- Remote Controls (2)
- Frame Pipes (various sizes, labeled A, B, C)
- Connectors (Tow-way joints, Angular joints)
- Hoses (4)
- Sealers (2)
- Pipe Adapters (2)
- Transparent Containers (2)

SETUP INSTRUCTIONS

Follow these steps to assemble your KASUE Portable Infrared Steam Sauna Box.

1. Assemble the Frame

1. Unpack all frame pipes and connectors.
2. Connect the pipes using the provided tow-way and angular joints to form the base and vertical structure of the sauna tent. Ensure all connections are secure.
3. Once the base and vertical supports are in place, connect the top pipes to complete the rectangular frame.

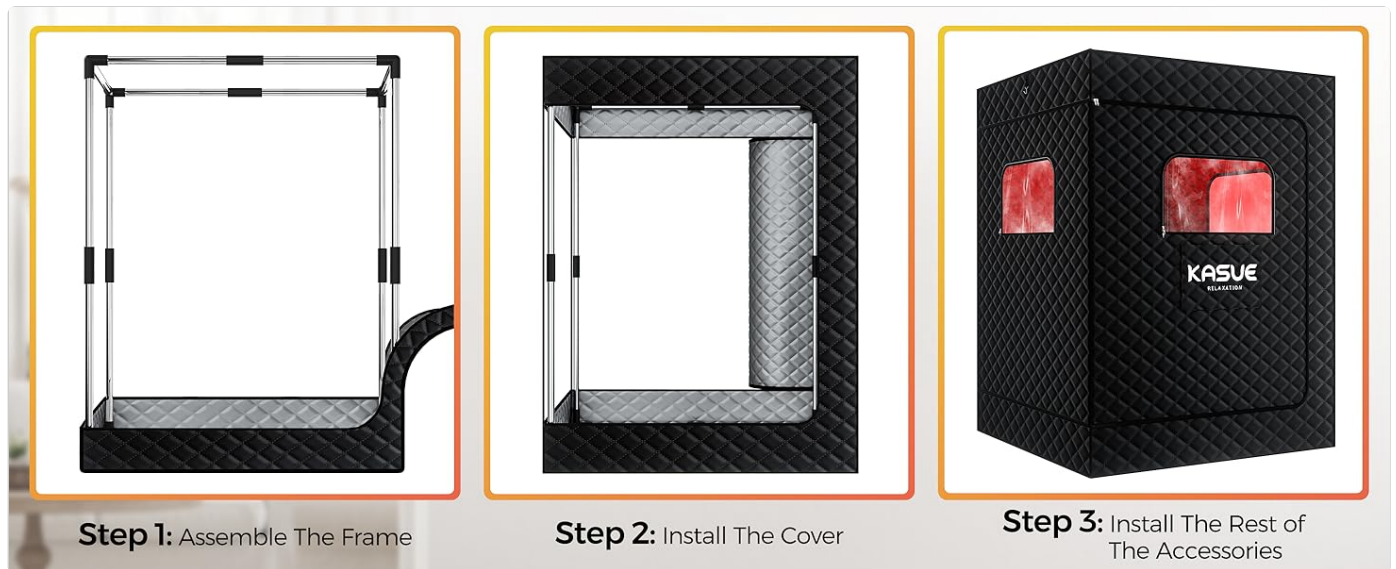


Image: Visual guide for the quick assembly process, illustrating the construction of the metal frame, fitting the fabric cover, and attaching accessories.

2. Install the Sauna Cover

4. Carefully drape the sauna tent fabric over the assembled frame.
5. Ensure the zippers and windows are correctly aligned with the frame openings.
6. Zip up the main entrance and any windows to secure the cover.

3. Connect Steam Generators and Red Light

7. Place the two steam generators outside the sauna tent, near the designated hose openings.
8. Connect one end of each hose to the steam generator and the other end to the pipe adapter inside the sauna tent. Ensure a tight seal using the provided sealers.
9. If using the red LED light, attach it to the interior frame using the integrated straps or clips. Connect its power cable to a suitable outlet.
10. Place the folding chairs inside the sauna tent.



Image: Detailed steps for connecting the steam generators, filling them with water, and operating the control panel or remote control for the KASUE sauna.

Setup Video Guide

Your browser does not support the video tag.

Video: A seller-provided video demonstrating the setup process of the KASUE Steam Sauna Box, including connecting components and preparing for use.

Your browser does not support the video tag.

Video: A seller-provided video showcasing the KASUE Portable Sauna Tent, highlighting its roomy interior and ease of setup for immediate use.

Your browser does not support the video tag.

Video: A seller-provided video demonstrating the portable sauna tent in a home setting, showing its assembly and use.

OPERATING INSTRUCTIONS

To ensure a safe and effective sauna experience, follow these operating guidelines.

1. Prepare the Steam Generators

1. Open the lid of each steam generator and fill with clean water up to the maximum fill line (3L capacity). Do not overfill.
2. Close the lids securely.
3. Plug the steam generators into separate, grounded electrical outlets. Using a single outlet for both may trip a circuit breaker due to high wattage (1400W each).
4. Power on the steam generators using the control panel or remote control. Set your desired temperature level (up to 9 levels) and timer (up to 120 minutes).
5. Allow approximately 5-15 minutes for the sauna to preheat and fill with steam.

Multifunctional Steam Engine

Dry-Burn Protection and Leakage Protection



Remote Control



Stainless Steel Material

Image: KASUE Multifunctional Steam Engine, showing dual steam generators, remote control, and the stainless steel interior. It also illustrates various natural additives that can be used with the steam.

2. Using the Sauna

6. Once the sauna is preheated, carefully enter through the dual-zippered entrance.
7. Sit comfortably on the provided folding chair(s).
8. Adjust the temperature and time as needed using the remote control.
9. If you feel too hot or need fresh air, partially open the transparent zippered window.
10. The built-in storage pouch can hold your phone or glasses.

Heats Up Quickly and Keeps Warm

Steam + Red Light, Let You Enjoy Every Minute



Image: The KASUE sauna box in use, demonstrating its rapid heating and ability to maintain warmth with both steam and red light for a relaxing experience.

3. Red Light Therapy

- The integrated 660nm red light strip provides therapeutic benefits. Ensure it is powered on for optimal results.
- Red light therapy is known to assist with muscle recovery, skin health, and overall well-being.

Great for Improving Physical Condition



660nm RED

Readily Absorbed on the surface to Augment Skin Health and Facilitate Healing

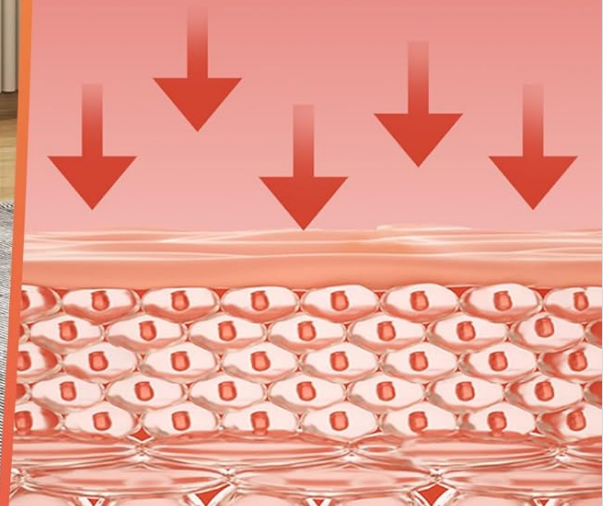


Image: The KASUE sauna box highlighting its 660nm red light feature, illustrating how it is readily absorbed by the skin to promote health and healing.

MAINTENANCE

Regular maintenance ensures the longevity and hygiene of your sauna.

- **Cleaning the Tent:** After each use, wipe down the interior of the sauna tent with a clean, damp cloth. The 5-layer waterproof material is easy to clean.
- **Draining Steam Generators:** Always unplug and allow the steam generators to cool completely before draining any remaining water.
- **Storage:** For compact storage, disassemble the frame and fold the tent. Store all components in a dry, cool place.

TROUBLESHOOTING

Problem	Possible Cause	Solution
Sauna not heating up.	Steam generators not plugged in or powered on. Insufficient water in generators.	Ensure generators are plugged in and powered on. Check water levels and refill if necessary.
Circuit breaker trips.	Both steam generators plugged into the same circuit.	Plug each steam generator into a separate electrical circuit to avoid overload.
Insufficient steam production.	Hoses not properly connected or sealed.	Verify all hose connections are tight and sealed to prevent steam leakage.

SPECIFICATIONS

Feature	Detail
Model Number	ZCSNJ-A
Product Dimensions	71" (H) x 49" (W) x 36" (D)
Item Weight	28.3 pounds
Steam Generator Capacity	2 x 3 Liters
Red Light Wavelength	660nm
Material	5-Layer Waterproof Fabric

WARRANTY AND SUPPORT

For warranty information or technical support, please refer to the contact details provided with your purchase or visit the official KASUE website.

Additional protection plans may be available for purchase. Please check your retailer for details.