

## TABWEE T90WiFi

# TABWEE T90 WiFi 11-inch Android 16 Tablet User Manual

Model: T90WiFi

## 1. INTRODUCTION

This manual provides essential information for the proper setup, operation, and maintenance of your TABWEE T90 WiFi 11-inch Android 16 Tablet. Please read this manual thoroughly before using your device to ensure optimal performance and longevity.

## 2. WHAT'S IN THE BOX

Upon unboxing your TABWEE T90 WiFi tablet, please verify that all the following items are included:

- TABWEE T90 WiFi Tablet
- Bluetooth Keyboard
- Wireless Mouse
- Protective Case
- Tablet Stand/Bracket
- Protective Film (pre-applied or separate)
- Power Adapter
- USB Type-C Data Cable
- User Manual (this document)



Image: TABWEE T90 WiFi Tablet with all standard accessories.

### 3. DEVICE OVERVIEW

The TABWEE T90 WiFi tablet features a sleek, lightweight design with an all-metal body, measuring approximately 8.3mm in thickness and weighing around 505g. It is equipped with an 11-inch display and a triple camera setup on the rear.

#### 3.1 Physical Features

- **Display:** 11-inch FHD IPS In-Cell TDDI display (1920x1200 resolution)
- **Cameras:** 13MP Rear Camera (Autofocus), 5MP Front Camera
- **Ports:** USB Type-C for charging and data transfer, 3.5mm Headphone Jack
- **Speakers:** Dual Smart-K Box Speakers
- **Card Slot:** MicroSD card slot (supports up to 2TB expansion)



## 安心のサービス



24時間365日対応のオンラインコールサポート



無償で2年間の修理保証を提供しておりますので、安心してお求めいただけます

Image: Tablet side profile illustrating its thin and lightweight design.

## 大容量バッテリー搭載で1日中安心



4時間  
ゲーム



5時間  
Webサイト



5時間  
ビデオ



45時間  
音楽

Image: Tablet ports and speaker placement.

## 4. INITIAL SETUP

### 4.1 Powering On and Off

- **To Power On:** Press and hold the Power button until the TABWEE logo appears.
- **To Power Off:** Press and hold the Power button, then select 'Power off' from the options on the screen.
- **To Restart:** Press and hold the Power button, then select 'Restart' from the options.

### 4.2 First-Time Use

When you power on the tablet for the first time, you will be guided through the initial setup process:

1. **Language Selection:** Choose your preferred language.
2. **Wi-Fi Connection:** Connect to a Wi-Fi network to access the internet. This is crucial for downloading apps and updates.
3. **Google Account:** Sign in with your Google account or create a new one. This is required for accessing the Google Play Store and other Google services.
4. **Date and Time:** Set the correct date and time, or allow the network to set it automatically.
5. **Security:** Set up a screen lock (PIN, pattern, password, or face recognition).



### 4.3 Inserting a MicroSD Card

To expand your tablet's storage, insert a MicroSD card (up to 2TB, sold separately) into the designated slot on the side of the device. Ensure the tablet is powered off before inserting or removing the card.



Image: MicroSD card insertion for storage expansion.

## 5. OPERATING YOUR TABLET

### 5.1 Android 16 Operating System

Your TABWEE T90 WiFi tablet runs on the latest Android 16 OS, offering an optimized and intuitive user experience. Key features include:

- **Enhanced UI:** A refined user interface for smoother navigation.
- **Improved Security:** Advanced security features to protect personal data and network connections.
- **Real-time Notifications:** Efficient management of notifications.
- **Multitasking:** Seamless switching and management of multiple applications.
- **AI Optimization:** System-wide AI enhancements for optimal performance in various scenarios.



Image: Examples of the Android 16 user interface and features.

### 5.2 Gemini AI 2.5 Integration

The tablet integrates Gemini AI 2.5, providing intelligent assistance for various tasks:

- **Content Recommendations:** Personalized suggestions for media and apps.
- **Image and Video Processing:** AI-powered enhancements for visual content.
- **Text Generation:** Assistance with writing and document creation.
- **Semantic Understanding:** Improved comprehension of user queries and commands.

## 最新のAndroid 16搭載、操作も表示もさらにスムーズに

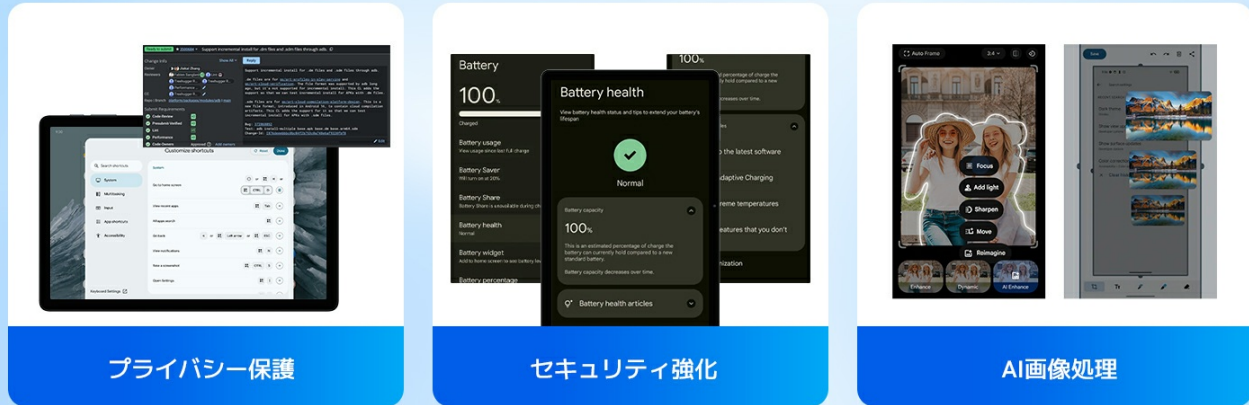


Image: Gemini AI 2.5 capabilities for smart interaction.

### 5.3 Connectivity

- **Wi-Fi:** Supports 802.11ac for high-speed dual-band (2.4GHz/5GHz) wireless connectivity.
- **Bluetooth:** For connecting wireless accessories like headphones, speakers, and the included keyboard and mouse.

## 6. PERFORMANCE AND STORAGE

The TABWEE T90 WiFi tablet is powered by a Unisoc T615 octa-core processor, ensuring smooth operation for various applications.

- **CPU:** Unisoc T615 Octa-Core (2x A75 @ 1.8GHz + 6x A55 @ 1.6GHz)
- **GPU:** Mali-G57
- **RAM:** 8GB physical RAM, expandable with up to 16GB virtual RAM (total equivalent of 24GB)
- **Internal Storage:** 128GB ROM
- **Expandable Storage:** Supports MicroSD card up to 2TB

## 余裕の大容量で安心！

最大128GB ROM、趣味の動画  
や大事なデータをたっぷり保存できます。



128GB ROM + 2TB TF 拡張



24GB (8+16) RAM



Image: Unisoc T615 Octa-Core Processor.



## Google Lens で世界を探索しよう

身の回りの世界を解き明かし、  
発見・創造・インスピレーションを



高精度なテキスト認識と翻訳



正確な物体認識



教育に役立つ強力なサポート



自然要素の識別にも対応



テキストのコピー  
や検索も簡単操作



テキスト操作  
リアルタイム翻訳  
Identify items  
多機能が一体化した快適なユ  
ーザー体験

Image: Memory and storage capacities.

## 7. DISPLAY AND MULTIMEDIA

Experience vivid visuals and immersive audio with your tablet.

- **Display Quality:** The 11-inch FHD IPS In-Cell TDDI display with 1920x1200 resolution provides clear and vibrant images.
- **Immersive Viewing:** Android 16's "Full Screen Display" feature optimizes app display to the edges, eliminating black bars for an immersive experience.
- **Widevine L1 Support:** Enjoy high-definition streaming (1080p and above) from services like Netflix and Amazon Prime Video.
- **Audio:** Dual Smart-K Box Speakers deliver rich sound for an enhanced multimedia experience.



## 強化セキュリティで安心・安全！

個人データをしっかり守り、  
より安全・プライベートなデジタル体験を実現



## バーチャル教室で、どこでも学習！

通学の制限なく、  
自宅や外出先から柔軟に学習を進められます

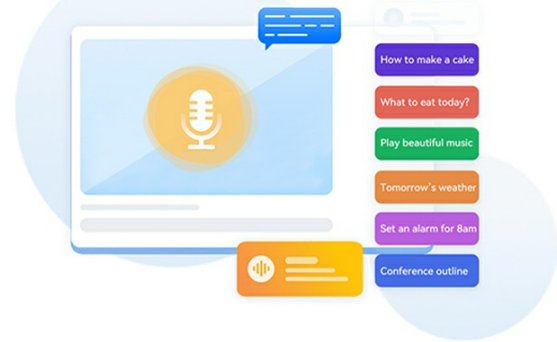


Image: High-resolution display for multimedia consumption.

## 8. CAMERA FEATURES

Capture moments and interact with your environment using the tablet's cameras and smart features.

- **Rear Camera:** 13 Megapixels with autofocus for clear photos and videos.
- **Front Camera:** 5 Megapixels for video calls and selfies.
- **AI Image Processing:** Android 16's AI technology enhances photo quality, making images natural and vivid.
- **Google Lens:** Utilize Google Lens for smart recognition, including scanning, translation, searching for information, and object identification.
- **Face Recognition:** Securely unlock your tablet instantly using face recognition.



Image: Camera specifications and face recognition feature.

## 一瞬を逃さず捉え、あなたの感性を表現

13MPリアカメラと5MPフロントカメラで、美しい瞬間をしっかり記録



Image: Exploring the world with Google Lens.

## 9. BATTERY AND CHARGING

The tablet is equipped with a large-capacity 8000mAh lithium-ion battery, providing extended usage times for various activities.

- **Battery Capacity:** 8000mAh
- **Charging:** Uses a versatile USB Type-C port for convenient and fast charging.
- **Usage Time:** Designed for long hours of video playback, gaming, web browsing, and online learning.



### 高性能 オクタコアCPUでサクサク動作

高性能と省電力を両立したオクタコアプロセッサを搭載。高解像度動画の再生やマルチタスク処理もスムーズにこなせるため、日常使いからエンターテインメントまで快適な体験を提供します

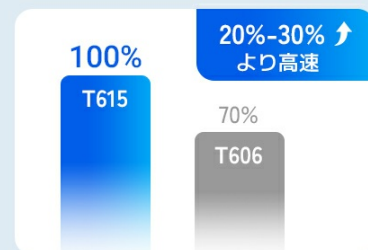


Image: 8000mAh battery capacity and typical usage durations.

## 10. MAINTENANCE

To ensure the longevity and optimal performance of your tablet, follow these maintenance guidelines:

- **Cleaning:** Use a soft, lint-free cloth to clean the screen and body. Avoid abrasive materials or harsh chemicals.
- **Storage:** Store the tablet in a cool, dry place away from direct sunlight and extreme temperatures.
- **Battery Care:** Avoid fully discharging the battery frequently. Charge it regularly to maintain battery health.
- **Software Updates:** Regularly check for and install system updates to benefit from performance improvements.



and security patches.

- **Protection:** Use the provided protective case and screen film to guard against scratches and minor impacts.

## 11. TROUBLESHOOTING

If you encounter issues with your tablet, refer to the following common solutions:

Problem	Possible Solution
Tablet does not power on	Ensure the battery is charged. Connect the charger and try again. If unresponsive, perform a forced restart by holding the power button for 10-15 seconds.
Wi-Fi connection issues	Check if Wi-Fi is enabled in settings. Restart your router and the tablet. Forget the network and reconnect.
Apps are slow or crashing	Close background apps. Clear app cache (Settings > Apps > [App Name] > Storage > Clear Cache). Restart the tablet. Ensure sufficient storage space.
Battery drains quickly	Reduce screen brightness. Close unused apps. Disable Wi-Fi/Bluetooth when not in use. Check battery usage in settings to identify power-hungry apps.
Accessories (keyboard/mouse) not connecting	Ensure Bluetooth is enabled on the tablet and the accessory. Check if the accessory is charged. Re-pair the accessory in Bluetooth settings.

If the problem persists after trying these solutions, please contact customer support.

## 12. TECHNICAL SPECIFICATIONS

Feature	Specification
Brand	TABWEE
Model Name	T90WiFi
Operating System	Android 16
Display Size	11 inches
Display Resolution	1920x1200 pixels (FHD IPS)
Processor	Unisoc T615 Octa-Core (1.8 GHz)
Graphics Processor	Mali-G57
RAM	8GB (up to 24GB with virtual RAM expansion)
Internal Storage	128GB
Expandable Storage	MicroSD up to 2TB
Rear Camera	13 MP (Autofocus)
Front Camera	5 MP

Feature	Specification
Battery Capacity	8000mAh Lithium-ion
Connectivity	Wi-Fi (802.11ac), Bluetooth
Ports	USB Type-C, 3.5mm Headphone Jack
Dimensions	Approx. 8.3mm thickness
Weight	Approx. 505g (tablet only)
Certifications	PSE, Technical Conformity (GMS Certified)

## 13. WARRANTY AND SUPPORT

TABWEE is committed to providing high-quality products and customer satisfaction.

### 13.1 Warranty Information

Your TABWEE T90 WiFi tablet comes with a standard **2-year quality warranty**. This warranty covers manufacturing defects and malfunctions under normal use.

You can extend your warranty to **4 years** by contacting TABWEE official customer support via email. Please refer to the contact information below for details.

### 13.2 Customer Support

If you have any questions, encounter issues, or require assistance with your tablet, please do not hesitate to contact our customer support team. We offer 24/7 online call support.

#### How to Contact Support:

1. **Via Amazon:** Go to your Amazon account > Order History > Select the relevant order > Contact Seller.
2. **Via Product Page:** On the product page, click on the seller's name below the "Add to Cart" button, then click "Ask a Question" to send an email.

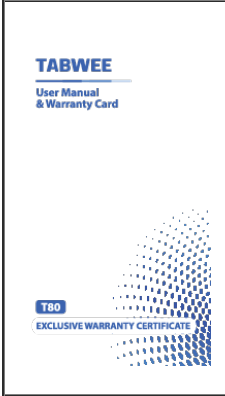
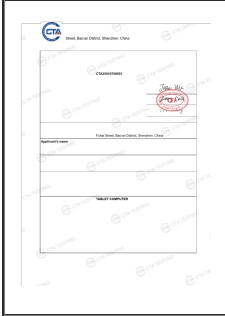
Our support team aims to respond as quickly as possible, excluding holidays.



Image: TABWEE Customer Support.

<p><b>Toote teabeleht</b></p>	<h3>TABWEE T90 Tahvelarvuti Toote Teabeleht</h3> <p>Toote teabeleht TABWEE T90 tahvelarvutile, sisaldades energiatõhususe klassi, aku vastupidavust, parandatavust ja muid tehnilisi andmeid vastavalt EL määrusele 2023/1669.</p>
<p><b>Produktdatenblatt</b></p>	<h3>TABWEE T90 Tablet Product Data Sheet - Technical Specifications &amp; Energy Labeling</h3> <p>Detailed product data sheet for the TABWEE T90 tablet, including technical specifications, energy efficiency class, battery life, reparability index, and compliance with EU Regulation 2023/1669.</p>
	<h3>TABWEE T20 User Manual &amp; Warranty Card</h3> <p>User manual and warranty information for the TABWEE T20 tablet, including setup, safety guidelines, maintenance, and regulatory compliance.</p>
<p><b>Produktdatenblatt</b></p>	<h3>TABWEE W90 Tablet - Produktdatenblatt und Reparierbarkeitsinformationen</h3> <p>Offizielles Produktdatenblatt für das TABWEE W90 Tablet, das technische Spezifikationen, Energieeffizienz und den Reparierbarkeitsindex gemäß der EU-Verordnung 2023/1669 detailliert beschreibt.</p>



 The image shows the cover of a TABWEE user manual and warranty card. It features the TABWEE logo at the top left, followed by the text 'User Manual & Warranty Card'. Below this, there is a decorative graphic of blue dots forming a curved shape. At the bottom left, there is a small blue box with the text 'T80' and 'EXCLUSIVE WARRANTY CERTIFICATE' below it.	<p><a href="#">TABWEE T80 User Manual and Warranty Information</a></p> <p>Comprehensive user manual and warranty details for the TABWEE T80 tablet, covering activation, features, safety, maintenance, and regulatory compliance.</p>
 The image shows a page from an FCC test report. It includes the CTA logo at the top left, followed by the text 'Shenzhen CTA Testing Technology Co., Ltd.'. Below this, there is a table with columns for 'Test Item', 'Test Result', and 'Test Method'. The table contains several rows of data, including 'Conducted Emission', 'Radiated Emission', 'Spurious Emissions', 'Occupied Bandwidth', 'Band Edge Compliance', 'Frequency Stability', and 'Peak-to-Average Ratio'. The report is signed by a representative of Shenzhen CTA Testing Technology Co., Ltd.	<p><a href="#">FCC Part 22/24 Test Report for TABWEE W90 Tablet Computer</a></p> <p>This document presents the FCC Part 22 and Part 24 test results for the TABWEE W90 Tablet Computer, manufactured by Shenzhen Baijin Technology Co., Ltd. It covers conducted and radiated output power, spurious emissions, occupied bandwidth, band edge compliance, frequency stability, and peak-to-average ratio, performed by Shenzhen CTA Testing Technology Co., Ltd.</p>