

Manuals+

[Q & A](#) | [Deep Search](#) | [Upload](#)

[manuals.plus](#) /

› [Tilta](#) /

› [Tilta Khronos Case Instruction Manual for iPhone 17 Pro \(Model: TK-IP17-PFC-BG\)](#)

Tilta TK-IP17-PFC-BG

Tilta Khronos Case Instruction Manual

Model: TK-IP17-PFC-BG | Compatible with iPhone 17 Pro

INTRODUCTION

This manual provides comprehensive instructions for the proper use and maintenance of your Tilta Khronos Case for iPhone 17 Pro. Designed for enhanced functionality and protection, this case integrates seamlessly with a range of accessories to optimize your mobile photography and videography experience.

KEY FEATURES

- **Custom Designed:** Specifically engineered for iPhone 17 Pro smartphones, ensuring a precise fit and full access to all device functions.
- **Expandable Ecosystem:** The case features multiple attachment points compatible with Tilta's Khronos ecosystem accessories, including focus side handles, cooling modules, filters, on-board lights, and USB-C hubs.
- **Secure Locking Clamp:** An integrated locking clamp mechanism provides a secure method to connect accessories and mount the system to tripods or other support systems, ensuring stability during use.
- **Passthrough Power:** Integrated electronic contact points within the case allow for passthrough power, expanding options for powering connected accessories directly through the case.
- **Snap-In Design:** The case utilizes a convenient snap-in design, allowing for quick and easy installation or removal of your iPhone 17 Pro.
- **Integrated Cooling System:** Features a graphene cooling system with a 7600mm² heat sink backplate to dissipate heat, improving phone performance during extended use.
- **Magnetic Back Plate:** The case includes a magnetic back plate that supports MagSafe accessories and can be replaced with a multi-functional back plate featuring a kickstand/flat head/box cutter, magnetic ring stand, or optional card holder.

SETUP

Installing the Khronos Case

1. Ensure your iPhone 17 Pro is clean and free of debris.
2. Align your iPhone 17 Pro with the case, ensuring the camera module and ports are correctly positioned.
3. Gently press your phone into the case until it snaps securely into place. Verify all edges are flush and the phone is firmly seated.

Applying the Screen Protector (if included)

1. Clean your phone screen thoroughly using the provided cleaning kit.
2. Use the installation auxiliary tray to align the screen protector precisely.
3. Gently press the screen protector onto the screen, ensuring no air bubbles.

Attaching the Wrist Strap

1. Locate the wrist strap attachment points on the case (two slots on the side).
2. Thread the thin loop of the wrist strap through the desired slot.
3. Pass the larger end of the wrist strap through the looped thin end and pull tight to secure.

OPERATING THE CASE

Using the Camera Control Button

The case features a dedicated camera control button on the side. This button offers a two-stage press functionality:

- **Half-Press:** Activates autofocus, similar to a traditional camera.
- **Full-Press:** Captures a photo or starts/stops video recording, depending on your camera app's mode.

Monitoring Device Temperature

The case includes a temperature-sensing indicator that changes color to reflect your device's temperature:

- **Red:** Approximately 25°C (77°F) - Normal operating temperature.
- **Orange:** Approximately 40°C (104°F) - Elevated temperature.
- **Yellow:** Approximately 45°C (113°F) - High temperature, consider reducing device load.

Magnetic Back Plate Functionality

The magnetic back plate allows for easy attachment of MagSafe-compatible accessories. It can also be swapped with other Khronos back plates for additional functionality:

- **Multi-Functional Back Plate:** Can serve as a kickstand, flat head screwdriver, or box cutter.
- **Magnetic Ring Stand:** Doubles as a grip or stand, rotating 360 degrees.
- **Card Holder:** An optional accessory for carrying essential cards.

ACCESSORIES INTEGRATION

The Tilta Khronos case is designed to be part of an expandable ecosystem, allowing for the attachment of various accessories. Most accessories connect via a secure locking clamp mechanism.

Attaching Handles

Side handles (e.g., wooden handle, NATO bracket handle) can be attached to the mounting points on the sides of the case. Ensure the lever on the handle is facing you for proper locking.

Video: Tilta Khronos Ecosystem for iPhone Setup Guide & Overview. This video demonstrates how to set up and use various accessories with the Tilta Khronos case, including side handles, the USB-C hub, cooling modules, and filters.

Using the Focus Handle

The focus handle provides power to both the case and the phone, and offers options for controlling zoom and focus within compatible apps like Blackmagic Camera. It connects via a USB-C cable to the phone and secures to the case's mounting points.

Connecting the USB-C Hub

The quick-release USB-C hub attaches to the bottom of the case via an Arca-Swiss plate or a 1/4"-20 thread. It connects to the phone's USB-C port and provides multiple I/O options:

- **PD USB-C Port:** For sending external power to the phone.
- **Two USB-C Ports:** For additional accessories or data transfer to an external hard drive.
- **HDMI Port:** For video output to an external monitor.
- **3.5mm Microphone Jack:** For external audio input.

Attaching Cooling Modules

The cooling module connects to the phone via MagSafe and can draw power from the case's contact pins. It helps to dissipate heat during intensive use.

Integrating Filters and Lens Adapters

The case supports various filter and lens mount options:

- **Filter Tray Holder:** Snaps over the camera lenses to mount 58mm filters (e.g., ND filters).
- **Lens Adapters:** Compatible with Khronos Lens Adapters for 17mm threaded lenses or T-series mount lenses.

MAINTENANCE

To ensure the longevity and optimal performance of your Tilta Khronos Case, follow these maintenance guidelines:

- **Cleaning:** Use a soft, dry cloth to wipe down the case regularly. For stubborn dirt, a slightly damp cloth with mild soap can be used, followed by thorough drying. Avoid harsh chemicals or abrasive materials.
- **Storage:** Store the case and its accessories in a clean, dry place away from extreme temperatures and direct sunlight when not in use.
- **Inspection:** Periodically inspect the locking clamps, mounting points, and electronic contacts for any signs of wear or damage. Ensure all screws (if applicable) are secure.

SPECIFICATIONS

Brand	Tilta
Model Number	TK-IP17-PFC-BG
Compatible Phone Models	iPhone 17 Pro
Color	Beige
Material	Thermoplastic Polyurethane (TPU) with Conductive Elements
Item Weight	1.85 pounds
Package Dimensions	10.63 x 7.87 x 4.72 inches

WARRANTY AND SUPPORT

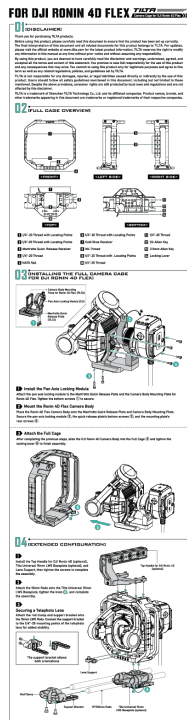
For warranty information, technical support, or customer service inquiries, please visit the official Tilta website or contact their customer support directly. Please have your product model number (TK-IP17-PFC-BG) and proof of purchase ready.

Related Documents - TK-IP17-PFC-BG



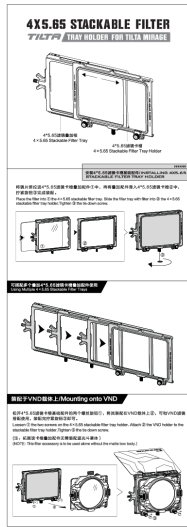
[KHRONOS iPhone 15 Pro Max Accessory Kit by TILTA - User Manual](#)

Comprehensive guide to the TILTA KHRONOS accessory system for iPhone 15 Pro Max, including the case, power handle, cooling system, card holder, NATO bracket, and hand wheel controller. Learn about product specifications, assembly instructions, feature descriptions, Bluetooth connectivity, and safety guidelines.



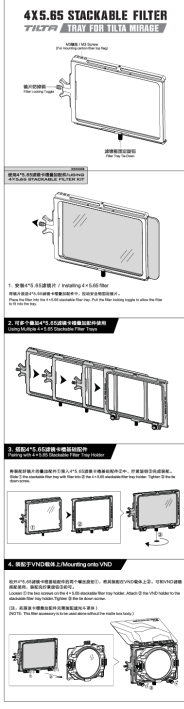
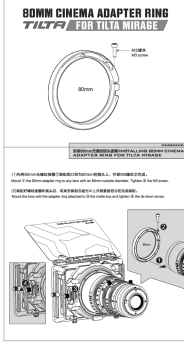
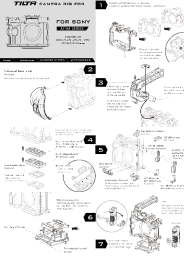
[DJI Ronin 4D Flex Camera Cage Installation and Configuration Guide](#)

A comprehensive guide to installing and configuring the Tilta Camera Cage for the DJI Ronin 4D Flex, including component overviews and extended setup options.



[Tilta MB-T16-SFH 4x5.65 Stackable Filter Tray Holder Installation Guide](#)

Detailed installation and mounting instructions for the Tilta MB-T16-SFH 4x5.65 Stackable Filter Tray Holder, designed for the Tilta Mirage system. Learn how to install filters, use multiple trays, and attach to VND holders.

 <p>4X5.65 STACKABLE FILTER TRAY FOR TILTA MIRAGE</p> <p>1. 將濾鏡插入濾鏡托架中。請確保濾鏡與托架之間的接觸面完全平整，並確保濾鏡的邊緣與托架的邊緣對齊。 (Insert the filter into the filter tray. Make sure the contact surface between the filter and the tray is completely flat, and ensure the edges of the filter are aligned with the edges of the tray.)</p> <p>2. 將多個濾鏡托架堆疊在一起。請確保每個托架的邊緣都與堆疊的托架對齊。 (Stack multiple filter trays together. Make sure the edges of each tray are aligned with the stacked trays.)</p> <p>3. 將堆疊好的濾鏡托架安裝到相機上。請確保托架的安裝位置正確，並確保托架與相機之間的接觸面完全平整。 (Mount the stacked filter tray onto the camera. Make sure the installation position is correct, and ensure the contact surface between the tray and the camera is completely flat.)</p> <p>4. 調整濾鏡托架的角度。請確保濾鏡托架的角度與相機的拍攝角度一致。 (Adjust the angle of the filter tray. Make sure the angle of the filter tray is consistent with the camera's shooting angle.)</p>	<p>Tilta 4x5.65 Stackable Filter Tray for Tilta Mirage - Installation Guide</p> <p>A comprehensive guide detailing the installation and usage of the Tilta 4x5.65 Stackable Filter Tray with the Tilta Mirage camera system. Learn how to insert filters, stack multiple trays, and mount the system onto VND carriers.</p>
 <p>80MM CINEMA ADAPTER RING FOR TILTA MIRAGE</p> <p>1. 將相機鏡頭安裝到相機上。 (Mount the camera lens onto the camera.)</p> <p>2. 將80mm Cinema Adapter Ring安裝到相機鏡頭上。 (Mount the 80mm Cinema Adapter Ring onto the camera lens.)</p> <p>3. 將相機安裝到相機底座上。 (Mount the camera onto the camera base.)</p> <p>4. 調整相機底座的角度。 (Adjust the angle of the camera base.)</p>	<p>Tilta 80mm Cinema Adapter Ring for Mirage: Installation Guide</p> <p>Step-by-step installation instructions for the Tilta 80mm Cinema Adapter Ring, compatible with the Tilta Mirage matte box. Learn how to attach the adapter to your lens and secure it to the matte box.</p>
 <p>TILTA CAMERA RIG FOR SONY A7/A9 SERIES</p> <p>1. 將相機安裝到相機底座上。 (Mount the camera onto the camera base.)</p> <p>2. 將相機底座安裝到相機底座上。 (Mount the camera base onto the camera base.)</p> <p>3. 將相機底座安裝到相機底座上。 (Mount the camera base onto the camera base.)</p> <p>4. 將相機底座安裝到相機底座上。 (Mount the camera base onto the camera base.)</p> <p>5. 將相機底座安裝到相機底座上。 (Mount the camera base onto the camera base.)</p> <p>6. 將相機底座安裝到相機底座上。 (Mount the camera base onto the camera base.)</p> <p>7. 將相機底座安裝到相機底座上。 (Mount the camera base onto the camera base.)</p> <p>8. 將相機底座安裝到相機底座上。 (Mount the camera base onto the camera base.)</p> <p>9. 將相機底座安裝到相機底座上。 (Mount the camera base onto the camera base.)</p> <p>10. 將相機底座安裝到相機底座上。 (Mount the camera base onto the camera base.)</p>	<p>Tilta Camera Rig for Sony A7/A9 Series - Installation Guide</p> <p>Comprehensive guide for assembling and using the Tilta camera rig designed for Sony A7 and A9 series cameras. Learn about cage, handles, support systems, and accessories.</p>