

VEVOR XL3278

VEVOR XL3278 225-Piece Socket Set Instruction Manual

Model: XL3278

		Introduction	Safety Information	Package		
Contents	Setup	Operation	Maintenance	Troubleshooting	Specifications	Warranty & Support

1. INTRODUCTION

This manual provides instructions for the safe and effective use of your VEVOR XL3278 225-Piece Socket Set. This comprehensive mechanic tool kit includes a variety of SAE and Metric, deep and shallow sockets, along with ratchets, bits, and accessories, designed for automotive repair, bike assembly, plumbing, woodworking, and general DIY projects. The tools are constructed from high-strength CR-V alloy steel with a chrome-plated finish for durability and resistance to rust.

High-Strength Metal Construction

Built to Withstand Rust and Warping

CR-V
Alloy Steel

Chrome
Plated Finish

**HRC
42-48**

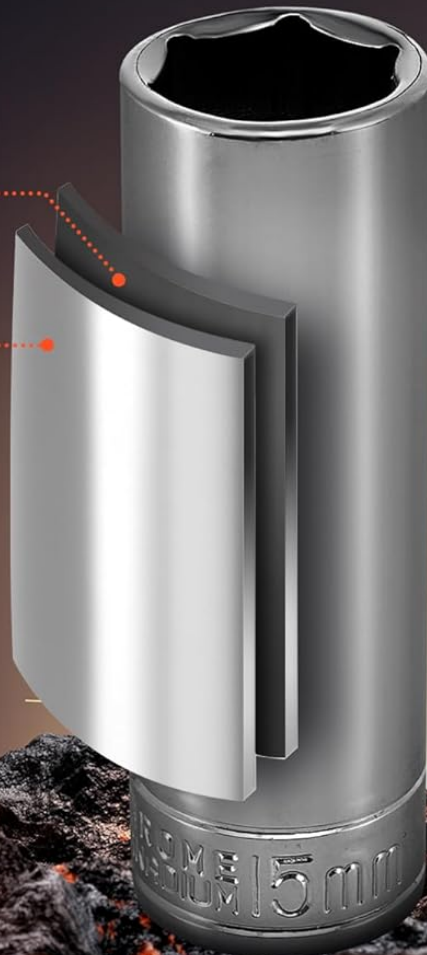


Image 1.1: The VEVOR 225-Piece Socket Set, showcasing the wide array of tools neatly organized within its durable storage case.



Item Model Number: **XL3278**

Drive Size: **3/8"+1/4"+1/2"**

Hardness: **HRC42-48**

Net Weight: **36.38 lbs / 16.5 kg**

Material: **CR-V Alloy Steel**

Piece Count: **225 pcs (Not Include Case)**

Surface Treatment: **Chrome Plated Gloss Finish**

Product Dimensions: **21.06 x 16.14 x 3.50 inch / 535 x 410 x 89 mm**

Product Accessories: **1 x User Manual**

Image 1.2: Examples of versatile applications for the socket set, including automotive, bicycle, plumbing, and woodworking tasks.

2. SAFETY INFORMATION

Always follow these safety guidelines when using the VEVOR Socket Set to prevent injury and tool damage:

- **Wear Eye Protection:** Always wear ANSI-approved safety goggles or safety glasses with side shields when using hand tools.
- **Inspect Tools:** Before each use, inspect tools for cracks, chips, or damage. Do not use damaged tools.

- **Use Correct Tool for the Job:** Select the appropriate size and type of socket for the fastener to prevent stripping or damage.
- **Maintain a Secure Grip:** Ensure a firm grip on the ratchet and socket to prevent slippage.
- **Keep Work Area Clean:** A cluttered work area can lead to accidents. Keep your workspace tidy and well-lit.
- **Do Not Over-Torque:** Avoid excessive force that could damage the fastener, tool, or cause injury. Use a torque wrench when specific torque values are required.
- **Keep Away from Children:** Store tools securely out of reach of children.

3. PACKAGE CONTENTS

Upon opening your VEVOR XL3278 Socket Set, please verify that all components are present and undamaged:

- 1 x VEVOR 225-Piece Socket Set (including various sockets, ratchets, bits, and accessories)
- 1 x User Manual

If any items are missing or damaged, please contact VEVOR customer support immediately.

4. SETUP

The VEVOR Socket Set comes pre-organized in a durable storage case, requiring minimal setup.

1. **Unpack:** Carefully remove the socket set case from its packaging.
2. **Inspect:** Open the case and visually inspect all tools for any signs of shipping damage or manufacturing defects.
3. **Familiarize:** Take a moment to familiarize yourself with the layout of the tools within the case. Each tool has a designated slot for easy identification and organization.

Versatile for Multiple Applications



Automotive Repair



Bicycle Assembly



Plumbing Maintenance



Woodworking DIY

Image 4.1: The shockproof organizer case with custom slots, designed to securely hold each tool in place.

5. OPERATING INSTRUCTIONS

Using the VEVOR Socket Set involves selecting the correct tool and applying it properly.

1. **Identify Fastener Size:** Determine if the fastener is SAE (Standard American English) or Metric, and its exact size. The sockets feature precision-rolled markings for clear identification, even in low-light conditions.
2. **Select Correct Socket:** Choose the appropriate socket (deep or shallow) and drive size (3/8, 1/4, or 1/2 inch) that matches the fastener. A snug fit is crucial to prevent rounding the fastener head.

3. **Attach Socket to Ratchet:** Firmly press the selected socket onto the square drive of the ratchet. Ensure it clicks into place.
4. **Engage Fastener:** Place the socket squarely onto the fastener head.
5. **Operate Ratchet:** Set the ratchet direction switch for loosening (counter-clockwise) or tightening (clockwise). Apply steady, even pressure to turn the fastener. The 6-point configuration of the sockets distributes pressure evenly, minimizing wear on fasteners.
6. **Remove Socket:** Once the task is complete, press the quick-release button on the ratchet (if applicable) to remove the socket.

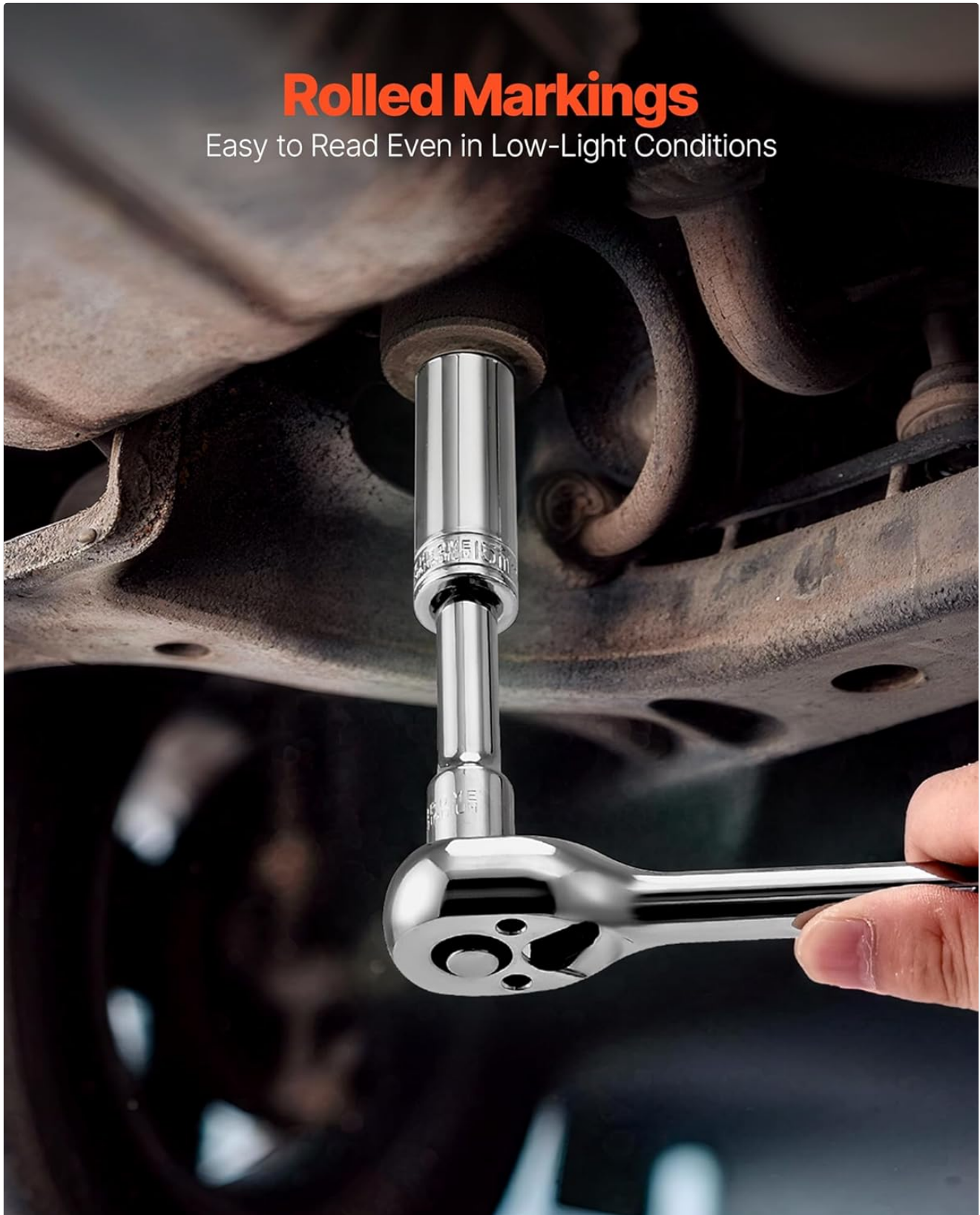


Image 5.1: The 6-point design ensures even pressure distribution on fasteners, reducing wear and allowing for high torque

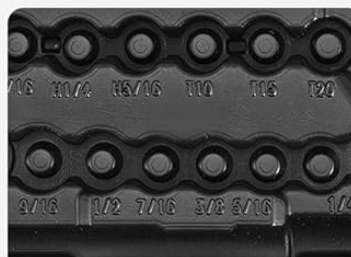
application up to 5073 IN-LB to handle various fastener conditions.

Shockproof Organizer Case

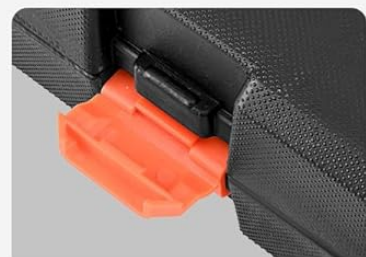
Securely Holds Each Tool in Place



Long-lasting
HDPE Case



Designated Slots



Reinforced Latches

Image 5.2: Sockets feature rolled markings for clear and quick identification, even in challenging lighting conditions.

6. MAINTENANCE

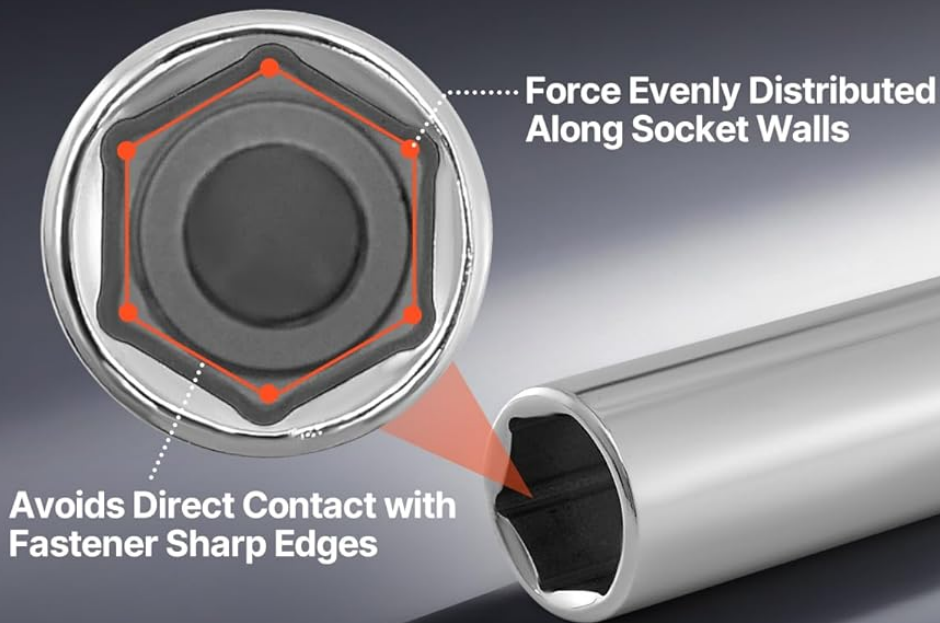
Proper maintenance ensures the longevity and performance of your VEVOR Socket Set.

- **Cleaning:** After each use, wipe down tools with a clean, dry cloth to remove dirt, grease, and debris. For stubborn grime, a mild degreaser can be used, followed by thorough drying.

- **Lubrication:** Periodically apply a light coat of machine oil to the moving parts of ratchets to ensure smooth operation and prevent corrosion.
- **Storage:** Always return tools to their designated slots in the shockproof organizer case after use. This prevents loss, damage, and keeps the set organized. The reinforced latches ensure secure closure.
- **Inspection:** Regularly inspect tools for signs of wear, such as rounded edges on sockets, bent extensions, or worn ratchet teeth. Replace any damaged tools to maintain safety and effectiveness.

6-Point Design

Reduces Fastener Wear



Max Torque 5073 in-lb Effortlessly Detaches Damaged Nuts



Rusted Nuts



Damaged Nuts



Flattened Nuts



Painted Nuts

Image 6.1: The high-strength metal construction, featuring CR-V alloy steel and a chrome-plated finish, provides superior durability and resistance to rust and warping.

7. TROUBLESHOOTING

This section addresses common issues you might encounter while using your socket set.

• **Difficulty Loosening a Fastener:**

- Ensure you are using the correct size socket. An ill-fitting socket can slip.
- Apply penetrating oil to rusted fasteners and allow time for it to work.
- Use steady, increasing force. Avoid sudden jerks.
- Consider using a breaker bar for additional leverage on extremely tight fasteners.

• **Socket Slipping or Rounding Fastener:**

- This indicates the socket is either the wrong size or worn. Always use a socket that fits snugly.
- Replace any worn sockets immediately.

• **Ratchet Mechanism Not Engaging:**

- Check if the direction switch is fully engaged in either the tightening or loosening position.
- The ratchet mechanism may be dirty or require lubrication. Refer to the Maintenance section.

8. SPECIFICATIONS

Feature	Detail
Item Model Number	XL3278
Drive Size	3/8", 1/4", 1/2"
Hardness	HRC42-48
Material	CR-V Alloy Steel
Net Weight	16.5 kg (36.38 lbs)
Piece Count	225 pcs (Not including case)
Surface Treatment	Chrome Plated Gloss Finish
Product Dimensions (L x W x H)	53.49 x 41 x 8.89 cm (21.06 x 16.14 x 3.50 inches)
UPC	197988891925



Image 8.1: Overview of product dimensions and key technical specifications.

9. WARRANTY & SUPPORT

For warranty information, technical support, or to inquire about replacement parts, please contact VEVOR customer support. Refer to the official VEVOR website or your purchase documentation for the most current contact details. When contacting support, please have your product model number (XL3278) and purchase date available.