

## AC530

# Generic AC530 Bone Conduction Ear Hook Wireless Headset Instruction Manual

Model: AC530

## 1. INTRODUCTION

Thank you for purchasing the Generic AC530 Bone Conduction Ear Hook Wireless Headset. This manual provides essential information for the safe and effective use of your device. Please read it thoroughly before use and retain it for future reference.





Image: The AC530 bone conduction headset, showing both ear hooks and its compact charging case.

## 2. PRODUCT FEATURES

---

- **Bone Conduction Technology:** Transmits sound through your cheekbones, allowing you to hear audio while remaining aware of your surroundings.
- **Foldable Design:** Unique foldable structure for compact storage and enhanced portability, ideal for travel and daily use.
- **Comfortable and Secure Fit:** Non-in-ear design ensures comfort during extended wear and a stable fit, suitable for sports and active lifestyles.
- **Enhanced Situational Awareness:** Open-ear design promotes safety by allowing ambient sounds to be heard alongside your audio.
- **Long Battery Life and Seamless Connectivity:** Offers extended listening time and easy, stable pairing with your devices for uninterrupted audio.

## 3. PACKAGE CONTENTS

---

Please check that all items are present in the package:

- Generic AC530 Bone Conduction Headset
- Charging Case
- USB Charging Cable
- Instruction Manual (this document)

## 4. PRODUCT OVERVIEW

The AC530 headset consists of two ear hook units and a portable charging case. The ear hooks are designed to rest comfortably over your ears, with the bone conduction transducers positioned near your cheekbones. The charging case provides protection and recharges the headset units.

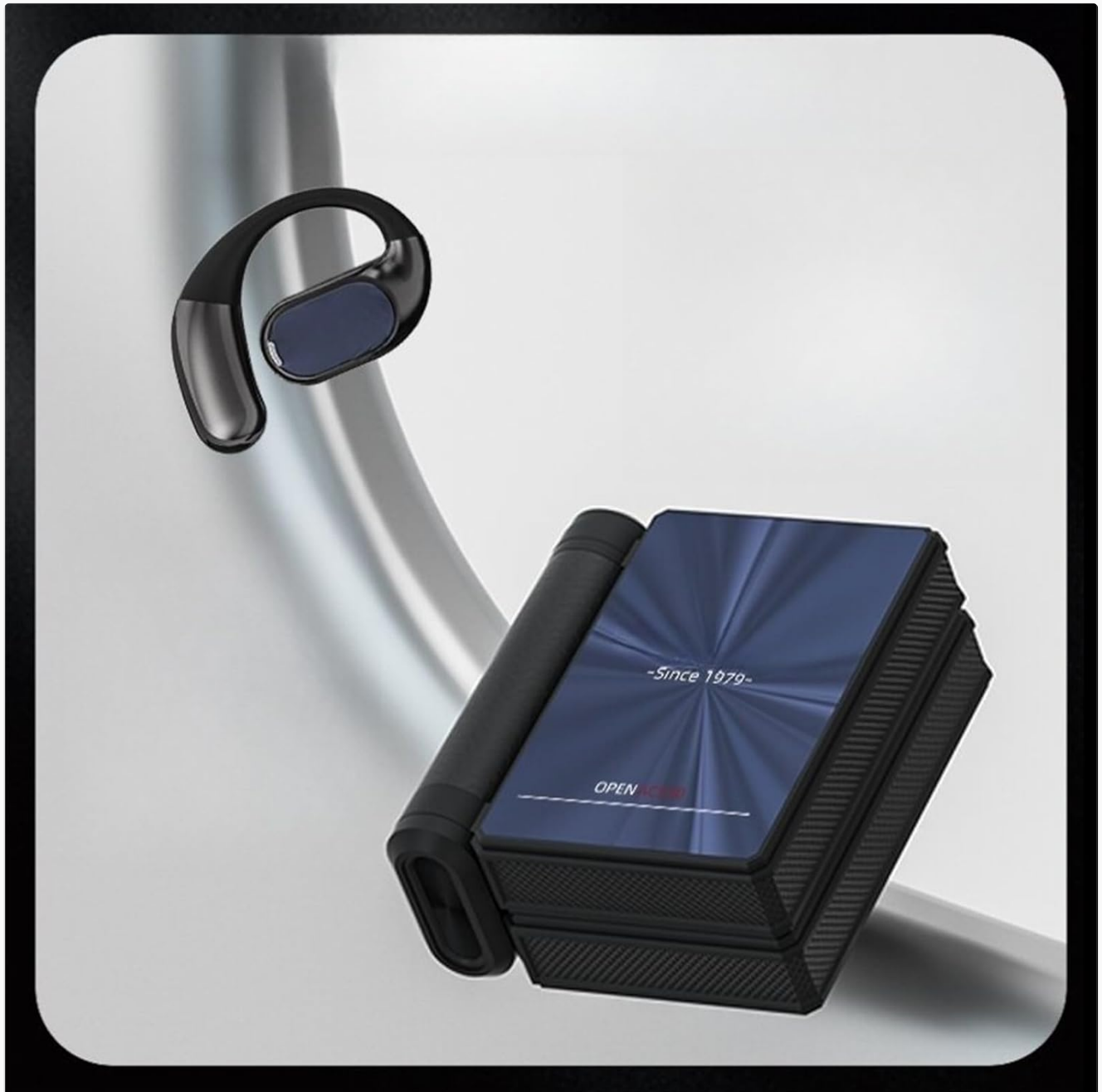


Image: A dynamic view of the AC530 headset and its charging case, highlighting its compact form factor.



6.1cm/2.4in

Image: Detailed dimensions of the AC530 headset and its charging case, showing a size of 5.4x6.1cm.

## 5. SETUP

---

### 5.1. Charging the Headset

1. Place the headset units into the charging case.
2. Connect the USB charging cable to the charging port on the case and to a compatible USB power source.
3. The indicator light on the case will show charging status. A full charge typically takes approximately 1-2 hours.
4. Once fully charged, disconnect the charging cable.

### 5.2. Pairing with a Device

1. Ensure the headset units are charged and removed from the charging case. They should automatically enter pairing mode.
2. On your smartphone or other Bluetooth-enabled device, go to the Bluetooth settings.
3. Search for available devices and select "AC530" from the list.
4. Once connected, the headset will indicate successful pairing (e.g., an audible prompt or indicator light change).
5. The headset will automatically reconnect to the last paired device when powered on and within range.

## 6. OPERATING INSTRUCTIONS

---

### 6.1. Power On/Off

- **Power On:** Remove the headset units from the charging case, or press and hold the multi-function button on each ear hook for approximately 3 seconds.
- **Power Off:** Place the headset units back into the charging case, or press and hold the multi-function button on each ear hook for approximately 5 seconds.

### 6.2. Music Playback

- **Play/Pause:** Single press the multi-function button on either ear hook.
- **Next Track:** Double press the multi-function button on the right ear hook.
- **Previous Track:** Double press the multi-function button on the left ear hook.

### 6.3. Volume Control

- **Volume Up:** Triple press the multi-function button on the right ear hook.
- **Volume Down:** Triple press the multi-function button on the left ear hook.

### 6.4. Call Management

- **Answer/End Call:** Single press the multi-function button on either ear hook.
- **Reject Call:** Press and hold the multi-function button on either ear hook for 2 seconds.
- **Activate Voice Assistant:** Press and hold the multi-function button on either ear hook for 2 seconds (when not on a call).

## 7. MAINTENANCE

---

- **Cleaning:** Use a soft, dry cloth to clean the headset and charging case. Do not use abrasive cleaners or immerse in water.
- **Storage:** Store the headset in its charging case when not in use to protect it from dust and damage. Keep in a cool, dry place away from direct sunlight and extreme temperatures.

- **Battery Care:** To prolong battery life, charge the headset regularly, even if not used frequently. Avoid fully discharging the battery for extended periods.

## 8. TROUBLESHOOTING

Problem	Possible Cause	Solution
Headset does not power on.	Low battery.	Charge the headset fully.
Cannot pair with device.	Bluetooth is off on device; headset not in pairing mode; too far from device.	Ensure Bluetooth is enabled; put headset in pairing mode; move closer to device.
No sound or low volume.	Volume too low; headset not properly positioned; connection issue.	Adjust volume on headset and device; ensure transducers are on cheekbones; re-pair headset.
Intermittent connection.	Interference; too far from device; low battery.	Move away from sources of interference; stay within Bluetooth range; charge headset.

## 9. SPECIFICATIONS

- **Model:** AC530
- **Brand:** Generic
- **Dimensions:** 5.4 x 6.1 cm
- **Weight:** 162.3 g
- **Material:** Acrylonitrile Butadiene Styrene (ABS)
- **Waterproof Level:** Not waterproof
- **Connectivity:** Wireless (Bluetooth)
- **Color:** A



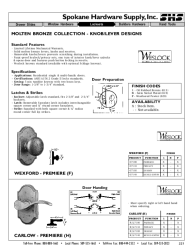
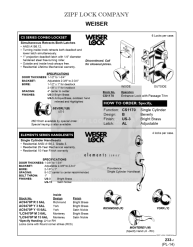
## 10. SAFETY INFORMATION

- Do not disassemble, repair, or modify the device.
- Keep the device away from extreme temperatures, direct sunlight, and moisture.
- Avoid listening at high volumes for extended periods to prevent hearing damage.
- Use caution when operating vehicles or machinery, as the headset allows ambient sound awareness but may still affect concentration.
- Keep out of reach of children and pets.

## 11. WARRANTY AND SUPPORT

This product comes with a standard manufacturer's warranty. For warranty claims or technical support, please contact your retailer or the manufacturer directly. Please retain your proof of purchase for warranty service.

Related Documents - AC530

	<p><a href="#">Monster Open Ear AC530 Bluetooth Headset Quick Start Guide</a></p> <p>A quick start guide for the Monster Open Ear AC530 Bluetooth headset, covering product parameters, wireless pairing, power on/off, call and music usage, charging instructions, troubleshooting, and FCC compliance.</p>
	<p><a href="#">Acerpure Cool Series 2-in-1 Air Circulator and Purifier User Manual</a></p> <p>Comprehensive user manual for the Acerpure Cool Series 2-in-1 Air Circulator and Purifier (Models AC530-20W, AC530-20G). Includes safety instructions, product overview, operation, maintenance, and troubleshooting.</p>
	<p><a href="#">Upstream Router &amp; Television FAQ: Troubleshooting and Support</a></p> <p>Find answers to common questions about Upstream internet and television services, including router setup, Wi-Fi optimization, speed tests, and troubleshooting tips for slow internet and Wi-Fi issues.</p>
	<p><a href="#">Spokane Hardware Supply: Weslock &amp; Weiser Door Locks Catalog</a></p> <p>Comprehensive catalog of Weslock and Weiser residential door locks, including knobs, levers, handlesets, deadbolts, and latches. Features detailed specifications, finishes, and product availability from Spokane Hardware Supply.</p>
	<p><a href="#">Weiser Door Locks and Handlesets Product Catalog</a></p> <p>Explore the comprehensive range of Weiser door locks, handlesets, deadbolts, and accessories, featuring various series like Welcome Home, Elements, and Keyless Home Access. Find detailed specifications, finishes, and ordering information for Weiser's quality door hardware.</p>