

Carlinkit Mini Ultra3

Carlinkit Mini Ultra3 Wireless CarPlay & Android Auto Adapter

Model: Mini Ultra3

1. INTRODUCTION

The Carlinkit Mini Ultra3 is a compact wireless adapter designed to convert your vehicle's existing wired CarPlay or Android Auto system into a wireless one. This device enables seamless integration of your smartphone's features, including navigation, music, and communication, directly onto your car's display without the need for physical cable connections. It supports both iOS (10+ and above) and Android (11.0 and above) devices, offering enhanced convenience and a streamlined driving experience.



Image: Carlinkit Mini Ultra3 Wireless Adapter, showcasing its compact design and dual compatibility for CarPlay and Android Auto.

2. SAFETY INFORMATION

Always prioritize safe driving. Do not attempt to operate or adjust the adapter or your smartphone while driving. Ensure all connections are secure before starting your vehicle. Adhere to all local traffic laws and regulations. Use voice commands for hands-free operation whenever possible.

3. PACKAGE CONTENTS

- Carlinkit Mini Ultra3 Wireless Adapter
- OTG Adapter (USB-C Male Connector)
- Instruction Manual



Image: The Carlinkit Mini Ultra3 package contents, including the adapter, OTG adapter, and manual.

4. SETUP

4.1. Prerequisites

- Your vehicle must have a factory-installed wired CarPlay or Android Auto system.
- Your smartphone must be running iOS 10+ or Android 11.0+.

4.2. Physical Connection

1. Locate your car's USB port (USB-A or USB-C) that supports wired CarPlay/Android Auto.
2. Insert the Carlinkit Mini Ultra3 adapter directly into the USB port. If your car has a USB-C port, use the provided OTG adapter.
3. The adapter's indicator light will illuminate, typically red for power, then green upon successful connection.

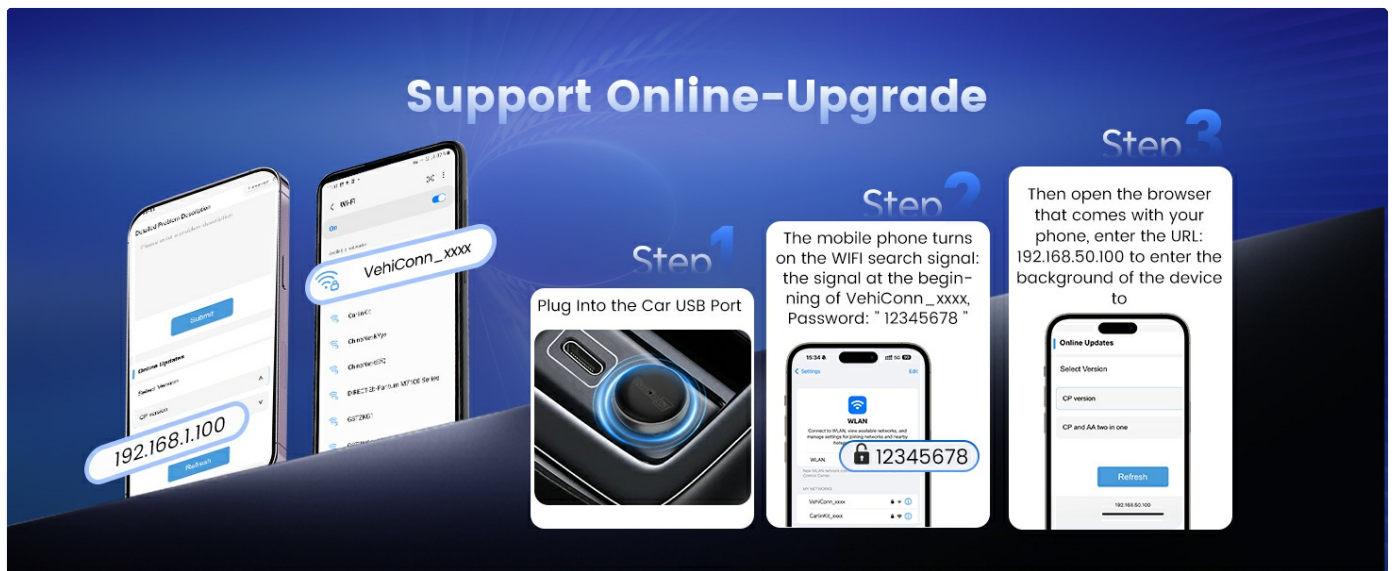


Image: Visual guide showing the three easy steps to set up the Carlinkit Mini Ultra3, including plugging into the USB port and phone pairing.

4.3. Smartphone Pairing

1. On your car's display, follow the prompts to enable CarPlay or Android Auto.
2. On your smartphone, enable both Wi-Fi and Bluetooth.
3. Go to your phone's Bluetooth settings and search for available devices.
4. Select the Bluetooth signal corresponding to the Carlinkit adapter (e.g., "Vehiconn_XXXX").
5. Confirm the pairing request on your phone and accept any prompts on your car's screen.
6. Once paired, your car's display should automatically switch to wireless CarPlay or Android Auto.

Your browser does not support the video tag.

Video: Detailed connection steps for the Carlinkit Ultra3, demonstrating the pairing process with a smartphone and car display.

5. OPERATING INSTRUCTIONS

5.1. Automatic Reconnection

After initial pairing, the Carlinkit Mini Ultra3 will automatically connect to your smartphone when you start your vehicle, typically within 8-10 seconds. This provides a true plug-and-play experience without repeated manual connections.



Image: The Carlinkit Mini Ultra3 highlighting its quick connect and auto-reconnection features, showing the device's compact size.

5.2. Wireless CarPlay & Android Auto Functionality

- **Navigation:** Access your preferred navigation apps (e.g., Google Maps, Apple Maps) with real-time traffic updates and precise directions.
- **Music & Media:** Stream music, podcasts, and audiobooks from your favorite apps with high-fidelity sound quality.
- **Communication:** Make and receive calls, send messages, and access your contacts hands-free using voice commands.
- **Voice Assistant:** Utilize Siri or Google Assistant for various tasks, enhancing safety and convenience while driving.

Enjoy Wireless Multi-functional Applications



Image: Demonstrates various wireless multi-functional applications like music, calls, navigation, and voice control available through the adapter.

5.3. Dual-Band Wi-Fi

The adapter features advanced dual-band (2.4GHz/5GHz) Wi-Fi technology, automatically selecting the optimal frequency for stable connectivity and near-zero latency audio-video synchronization.



Image: Illustrates the dual-band 2.4GHz/5GHz Wi-Fi capability of the Carlinkit Mini Ultra3, emphasizing fast, stable, and no-delay performance.

5.4. Original Car Controls

The adapter retains full functionality of your original car controls, including steering wheel buttons, rotary knobs, and touch screen interfaces, ensuring a familiar and intuitive user experience.

Your browser does not support the video tag.

Video: Demonstrates how to set up the Carlinkit Mini Ultra3 and its various functionalities, including seamless integration with car controls.

6. MAINTENANCE

6.1. Firmware Updates (OTA)

The Carlinkit Mini Ultra3 supports Over-The-Air (OTA) firmware updates via the official Carlinkit App. Regularly updating the firmware ensures access to new features, performance enhancements, and improved compatibility. To update:

1. Connect the adapter to your car's USB port.

2. On your mobile phone, turn on Wi-Fi and search for the adapter's Wi-Fi signal (e.g., "VehiConn_XXXX"). The default password is "12345678".
3. Open a web browser on your phone and enter the URL: <http://192.168.50.100> to access the update page. (Ensure mobile data is enabled on your phone to access this page properly).
4. Follow the on-screen instructions to check for and install available updates.



Image: A visual guide detailing the three steps to perform an online firmware upgrade for the Carlinkit Mini Ultra3.

6.2. General Care

Keep the adapter clean and free from dust and moisture. Avoid exposing it to extreme temperatures. Do not attempt to disassemble or repair the device yourself, as this will void the warranty.

7. TROUBLESHOOTING

- **No Connection:** Ensure your car has wired CarPlay/Android Auto. Check if the adapter is properly inserted into the USB port. Verify Wi-Fi and Bluetooth are enabled on your phone and correctly paired.

- **Intermittent Connection/Lag:** This could be due to RF interference. Try switching the adapter to 5GHz in settings (via the web interface) if available, and ensure no other USB devices are causing interference.
- **CarPlay/Android Auto Not Launching:** Restart your phone and car's infotainment system. Re-pair the device. Ensure your phone's operating system is up to date.
- **No Audio:** Check your car's audio source settings. Ensure your phone's volume is up.

For further assistance, refer to the official Carlinkit support resources or contact customer service.

8. SPECIFICATIONS

Product Dimensions	0.98 x 0.98 x 0.88 inches
Item Weight	0.32 ounces
Compatible Devices	iPhone 6 (iOS 10+) and above, Android phone (Android 11.0+) and above
Connector Type	USB Type A, USB Type C
Wi-Fi Frequency	2.4GHz/5GHz Dual-Band
CPU	Dual-Core Processor

Widely Compatibility



For Anroid 10+



For iPhone 6 or above



Supports USB-A & USB-C
(Male Connector) Port Usage

98%



Of Cars With Over 800 Models

(For OME Wired CarPlay/Wired Android Auto)

For Benz



For Honda



For Nissan



For Ford



For Porsche



For VW



For Volvo



For Chevrolet



For Audi



For Jeep



For Toyota



More+






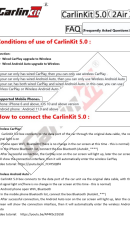

Image: Illustrates the wide compatibility of the Carlinkit Mini Ultra3 with 98% of car models that have OEM wired CarPlay/Android Auto, and various phone models.

9. WARRANTY AND SUPPORT

The Carlinkit Mini Ultra3 comes with a 24-month warranty. For any questions regarding the equipment, adaptation issues, or technical support, please contact our 24/7 customer service team for assistance. You can find contact information on the official Carlinkit website or through your purchase platform.



Related Documents - Mini Ultra3

	<p>Carlinkit Wireless CarPlay and Android Auto Adapter User Manual</p> <p>Instruction manual for the Carlinkit adapter, detailing how to upgrade factory wired CarPlay and Android Auto to wireless versions. Includes connection diagrams, LED status, product specifications, supported devices, setup steps for both CarPlay and Android Auto, online update/feedback procedures, precautions, and after-sales service information.</p>
	<p>CarlinKit 5.0 CarPlay/Android Auto</p> <p>CarlinKit 5.0 CarPlay Android Auto,</p>
	<p>CarlinKit 5.0 Wireless Adapter Instruction Manual - Upgrade to Wireless CarPlay & Android Auto</p> <p>Instruction manual for the CarlinKit 5.0 2air wireless adapter. This guide details how to upgrade your car's wired CarPlay and Android Auto to wireless, covering connection steps, product specifications, compatibility, online updates, feedback, precautions, and after-sales service.</p>
	<p>CarlinKit 5.0 User Guide: Wireless CarPlay and Android Auto</p> <p>Comprehensive guide for the CarlinKit 5.0 adapter, covering setup, troubleshooting, and features for wireless CarPlay and Android Auto connectivity.</p>
	<p>CarlinKit Wireless CarPlay Adapter FAQ and Usage Guide</p> <p>A comprehensive guide to using the CarlinKit 3.0 Wireless CarPlay adapter, covering compatibility, connection, upgrades, troubleshooting, and log uploading for a seamless experience.</p>

