

## LG 27G440A-B

# LG 27G440A-B 27-Inch UltraGear Full HD IPS Gaming Monitor User Manual

Model: 27G440A-B

## 1. INTRODUCTION

This manual provides detailed instructions for the setup, operation, maintenance, and troubleshooting of your LG 27G440A-B 27-Inch UltraGear Full HD IPS Gaming Monitor. Designed for speed, precision, and immersive gaming, this monitor features HDR10 support, 99% sRGB coverage, a 240Hz refresh rate, and 1ms (GtG) response time. It is compatible with NVIDIA G-SYNC and AMD FreeSync Premium for tear-free, low-latency gameplay.

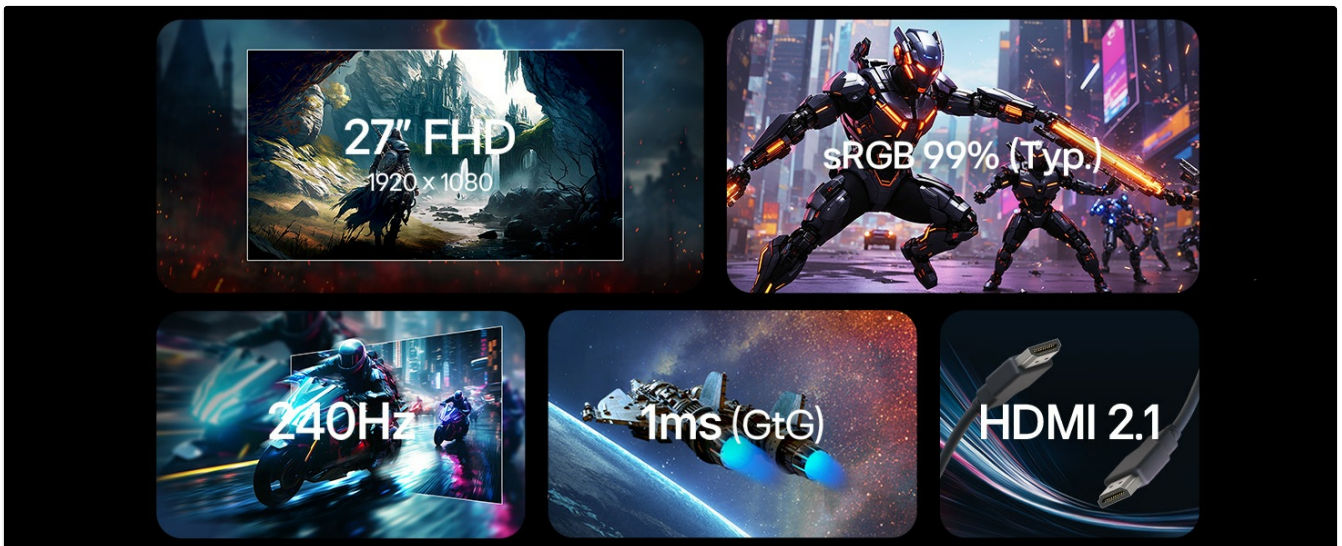


Image: Overview of LG UltraGear 27G440A-B monitor features including 27" FHD, sRGB 99%, 240Hz, 1ms (GtG), and HDMI 2.1.

## 2. WHAT'S IN THE BOX

Verify that all components are present in the packaging:

- LG 27G440A-B Monitor
- Power Cable

- DisplayPort Cable

## 3. SETUP

---

### 3.1 Assembling the Stand

Carefully remove the monitor and stand components from the packaging. Attach the stand base to the stand neck, then secure the assembled stand to the monitor panel. Ensure all connections are firm.

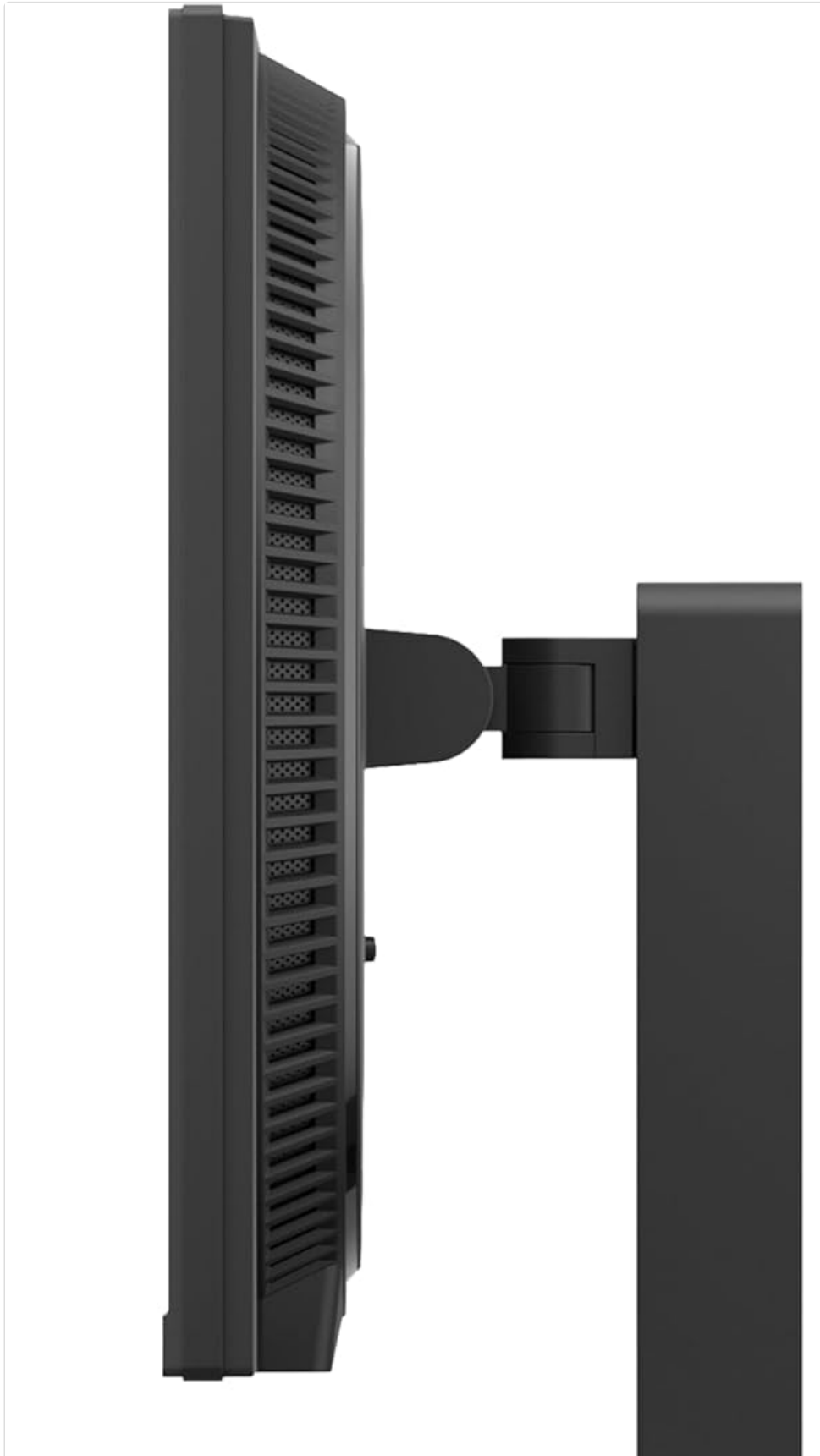




Image: Side profile of the LG 27G440A-B monitor showing its slim design and adjustable stand.



Image: Close-up of the monitor's hexagonal stand base, providing stability.



Image: Rear view of the monitor showing the attachment point for the stand, featuring the UltraGear logo.

### 3.2 Connecting the Monitor

Connect the power cable to the monitor and a power outlet. Use the provided DisplayPort cable or an HDMI 2.1 cable to connect the monitor to your computer's graphics card. Ensure all cables are securely connected.



Image: Close-up of the monitor's rear input panel, showing DisplayPort, two HDMI 2.1 ports, and audio jacks.



Image: Diagram illustrating the various input ports on the LG 27G440A-B monitor, including HDMI 2.1 and DisplayPort 1.4.

## 4. OPERATING INSTRUCTIONS

---

### 4.1 Powering On and Basic Display

Press the power button located on the bottom center of the monitor to turn it on. The monitor will automatically detect the input source. Adjust the monitor's position using the tilt, height, swivel, and pivot functions of the stand for optimal viewing comfort.



Image: The LG 27G440A-B monitor displayed in a vertical (portrait) orientation, showcasing its pivot functionality.

## 4.2 Display Features

- **240Hz Refresh Rate:** Experience smoother frame transitions for gaming and general use.
- **1ms (GtG) Response Time:** Minimizes blur and ghosting in fast-paced scenes for crisp gameplay.
- **HDR10 & 99% sRGB:** Delivers rich, vivid colors and enhanced contrast.
- **NVIDIA G-SYNC Compatible & AMD FreeSync Premium:** Ensures tear-free, low-latency gaming by synchronizing the monitor's refresh rate with your GPU.



Image: A dynamic scene depicting a motorcycle race, highlighting the smooth motion provided by the 240Hz refresh rate.

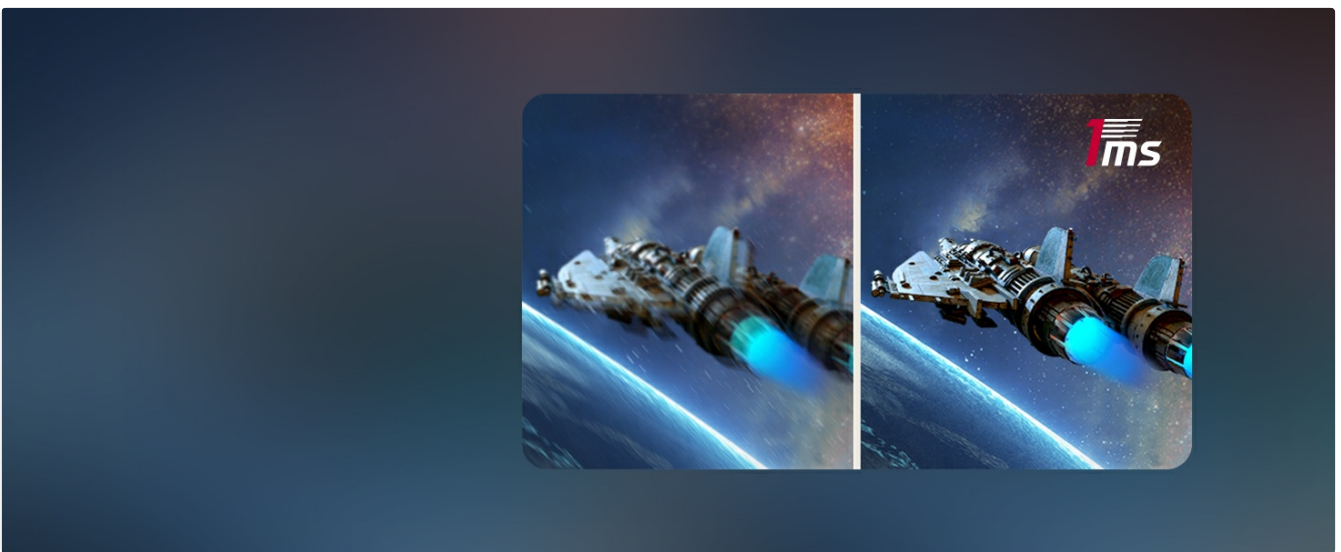


Image: A split comparison showing a spaceship with motion blur on the left and a sharp, clear image on the right, demonstrating the 1ms (GtG) response time.

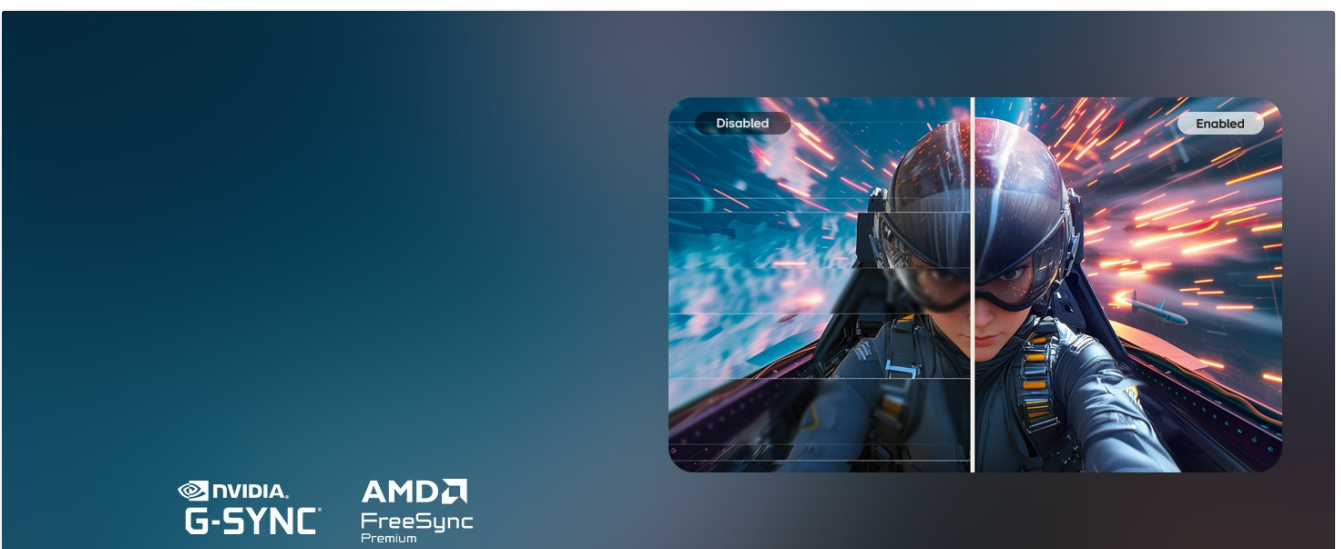


Image: A split screen showing a gaming scene with screen tearing on the left (Disabled) and a smooth image on the right (Enabled), illustrating the benefits of NVIDIA G-SYNC Compatible and AMD FreeSync Premium.

### 4.3 Gaming Features

- **Dynamic Action Sync:** Reduces input lag for real-time action.

- **Black Stabilizer:** Enhances visibility in dark scenes to help spot enemies.
- **Crosshair:** Provides an on-screen crosshair for improved aiming accuracy in FPS games.



Image: A split image demonstrating Dynamic Action Sync, showing a character reacting faster on the right side.

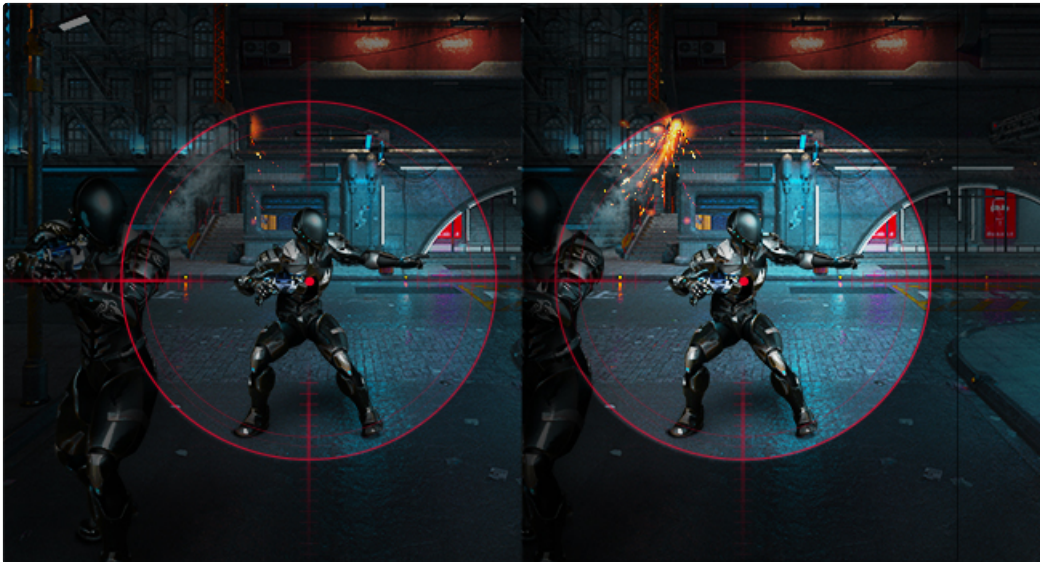


Image: A split image showing a dark game scene, with the right side revealing more detail in shadows due to Black Stabilizer.

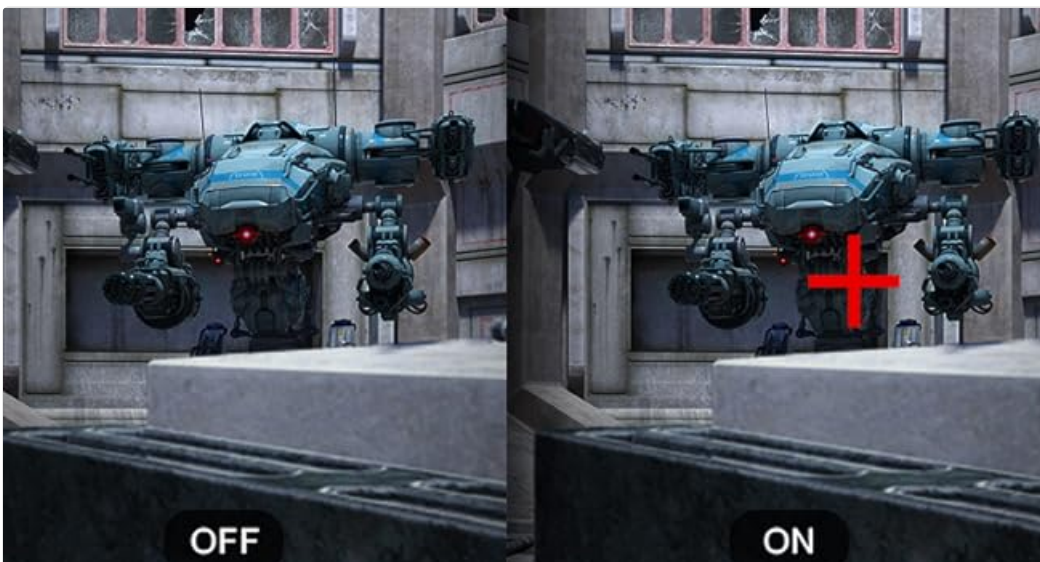


Image: A split image showing a game scene, with the right side displaying an on-screen crosshair for enhanced aiming.

## 4.4 LG Switch App

The LG Switch app allows for easy optimization of your monitor settings. Adjust brightness, fine-tune image quality, apply settings with hotkeys, split the screen into various layouts, and launch video calls directly from the application. Download the latest version from [LG.com](https://www.lg.com).

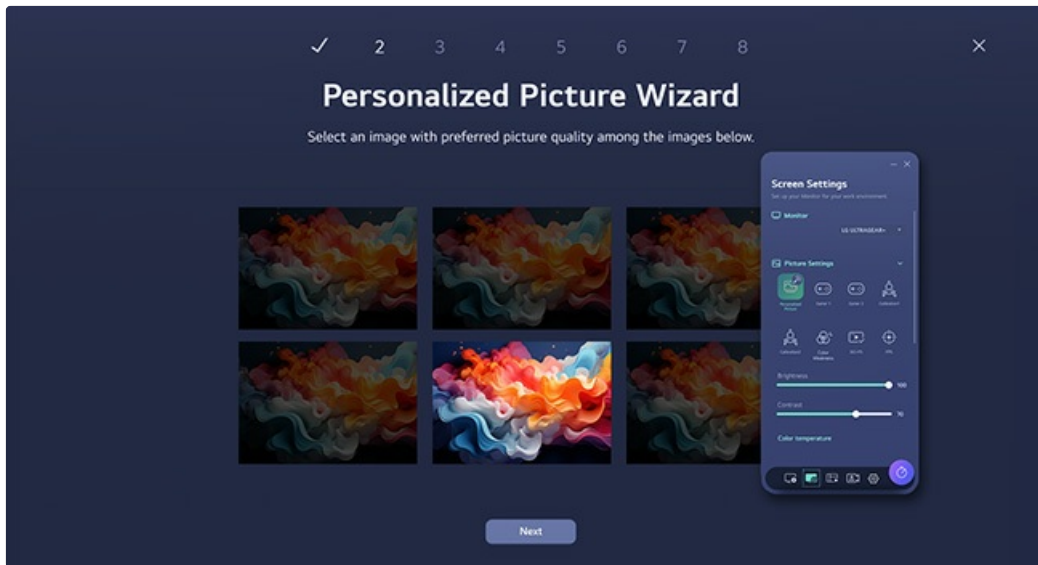


Image: Screenshot of the LG Switch app's "Personalized Picture Wizard" interface, showing options for adjusting picture quality and settings.

## 5. MAINTENANCE

### 5.1 Cleaning the Monitor

To clean the monitor screen, gently wipe it with a soft, lint-free cloth. For stubborn marks, lightly dampen the cloth with water or a mild, non-abrasive screen cleaner. Avoid using harsh chemicals, alcohol, or ammonia-based cleaners, as these can damage the screen surface. For the monitor casing, use a soft, dry cloth.

### 5.2 General Care

Avoid placing heavy objects on the monitor or its cables. Do not block the ventilation openings on the monitor. Keep the monitor away from direct sunlight, excessive heat, and moisture. Unplug the monitor from the power outlet during lightning storms or when it will be unused for extended periods.

## 6. TROUBLESHOOTING

If you encounter issues with your monitor, refer to the following common troubleshooting steps:

- **No Power:** Ensure the power cable is securely connected to both the monitor and a working power outlet. Check if the power indicator light is on.
- **No Signal:** Verify that the video cable (DisplayPort or HDMI) is correctly connected to both the monitor and your computer. Ensure the correct input source is selected on the monitor.
- **Flickering Screen:** Check the video cable for damage or loose connections. Update your graphics card drivers. Ensure the refresh rate is set correctly in your computer's display settings.
- **Image Quality Issues:** Adjust brightness, contrast, and color settings through the monitor's OSD (On-Screen Display) menu or the LG Switch app. Ensure the display resolution is set to 1920 x 1080.
- **Sound Issues:** If using the monitor's audio output, ensure external speakers or headphones are connected correctly and volume levels are adjusted on both the monitor and your computer.

For more complex issues, consult the LG support website or contact customer service.

## 7. SPECIFICATIONS

Feature	Specification
Brand	LG
Model Number	27G440A-B.AUS
Screen Size	27 Inches
Resolution	FHD 1080p (1920 x 1080 Pixels)
Refresh Rate	240 Hz
Response Time	1 Milliseconds (GtG)
Display Type	IPS
Brightness	400 Candela per Square Meter
Contrast Ratio	1000:1
Aspect Ratio	16:9
Connectivity	2x HDMI 2.1, 1x DisplayPort 1.4
Adaptive Sync	NVIDIA G-SYNC Compatible, AMD FreeSync Premium
Additional Features	HDR10, Dynamic Action Sync, Black Stabilizer, Crosshair, Height Adjustment, Pivot Adjustment, Swivel Adjustment, Tilt Adjustment
Item Dimensions (D x W x H)	8.7"D x 24.1"W x 21.3"H
Item Weight	14.3 Pounds

## 8. WARRANTY AND SUPPORT

### 8.1 Warranty Information

This LG monitor comes with a 1 Year Manufacturer Warranty. Please retain your proof of purchase for warranty claims. For detailed terms and conditions, refer to the warranty card included with your product or visit the official LG website.

### 8.2 Customer Support

For technical assistance, product registration, or service inquiries, please visit the official LG support website at [LG.com/us/support](https://www.lg.com/us/support) or contact LG customer service directly. You may also find helpful resources and FAQs on their website.

