

## TRYX L-P0CL-DS0M-G0K

# TRYX Panorama WB CPU Water Block Instruction Manual

Model: L-P0CL-DS0M-G0K

## INTRODUCTION

---

This manual provides detailed instructions for the installation, operation, and maintenance of your TRYX Panorama WB CPU Water Block. Designed for custom liquid cooling systems, this water block features a 6.67-inch 2K AMOLED display, microchannel fins, a copper base, and an integrated VRM fan to ensure optimal thermal performance and visual customization. Please read this manual thoroughly before installation and use.

## WHAT'S IN THE BOX

---

Verify that all components listed below are present in your package.

- CPU Water Block
- AMD/Intel Mounting Brackets
- Thermal Paste (α-01)
- 90° Rotary Fittings
- Installation Manual
- Accessories (screws, springs, etc.)

# WHAT'S IN THE BOX

- ✓ Water Block
- ✓ AMD/Intel Socket
- ✓ α-01 Thermal Grease
- ✓ 90° Rotary Fitting



Image: Contents of the TRYX Panorama WB package.

## SETUP AND INSTALLATION

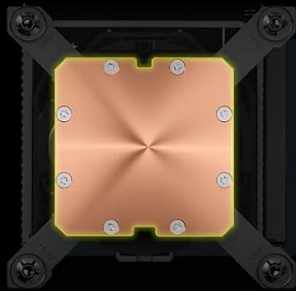
Follow these steps carefully to install the TRYX Panorama WB CPU Water Block into your custom liquid cooling system. Ensure your system is powered off and disconnected from the mains before beginning.

### 1. Prepare Your CPU and Motherboard

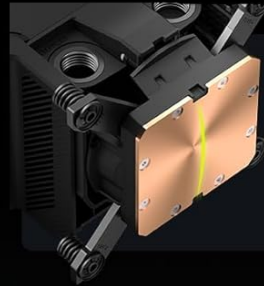
1. Remove any existing CPU cooler.
2. Clean the CPU surface thoroughly with isopropyl alcohol to remove old thermal paste.
3. Install the appropriate backplate and mounting standoffs for your CPU socket (Intel LGA 1851/1700/1200/115x or AMD AM4/AM5). Refer to your motherboard manual for specific backplate installation if needed.

# LARGE MICRO-CONVEX COPPER BASE

Minimizes the gap between the CPU and the block, ensuring optimal contact for faster and more efficient heat dissipation.



**High-purity  
CU1100 copper**



**Micro-convex  
base**

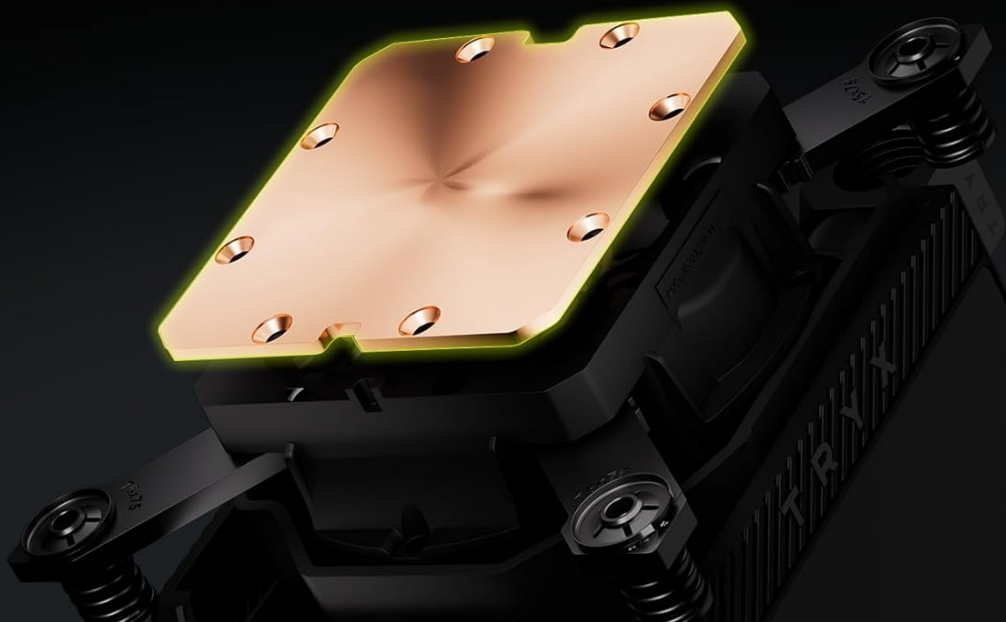


Image: Exploded view of the water block components, including mounting hardware.

## 2. Apply Thermal Paste

Apply a small amount of the provided thermal paste ( $\alpha$ -01) to the center of your CPU's integrated heat spreader (IHS). A pea-sized dot is generally sufficient. The pressure from the water block will spread it evenly.



## PANORAMA SE

Visit The Store

Image: Detail of the water block's copper base, designed for efficient heat transfer.

### 3. Mount the Water Block

1. Carefully align the water block over the CPU and mounting standoffs.
2. Place the adjustable mounting bracket over the water block.
3. Secure the water block using the provided screws, tightening them in a diagonal pattern until snug. Avoid overtightening.

### 4. Connect to Your Liquid Cooling Loop

The TRYX Panorama WB features G1/4" threaded outlets for compatibility with standard liquid cooling components.

- Install the included 90° rotary fittings or your preferred G1/4" fittings into the water block's ports. Ensure a secure, leak-free connection.
- Connect your tubing to the fittings, ensuring proper flow direction within your custom loop.

# ASETEK GEN8 V2 STRUCTURE

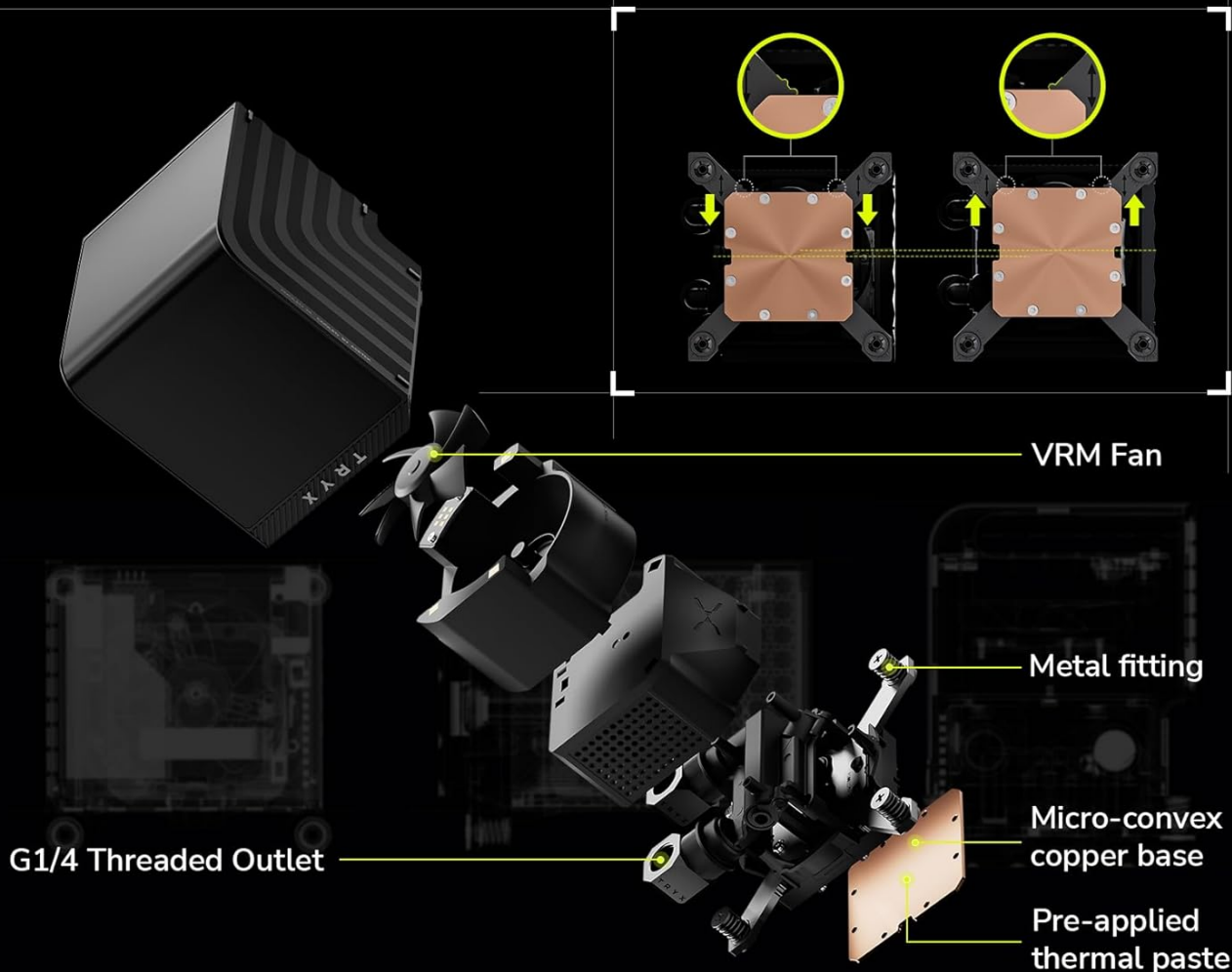


Image: Detail of the 90° rotary fittings and G1/4" threaded ports for loop integration.

**T R Y X**

Take The Visual Further —  
Now In Your Custom Loop.

**PANORAMA WB**





Image: The 90° rotary adapter fitting, highlighting its 360° rotation capability.

5. Power Connections

Connect the necessary cables from the water block to your motherboard or power supply. This typically includes a USB header for display and software control, and a fan header for the integrated VRM fan.

OPERATING INSTRUCTIONS

The 2K AMOLED Display

The TRYX Panorama WB features a vibrant 6.67-inch 2K AMOLED display operating at 60Hz. This display can show system information, custom images, and videos.



Image: The 6.67-inch curved AMOLED display showcasing its visual capabilities.

## VRM FAN

The fan provides additional cooling to the motherboard's VRM, Helping to improve power delivery stability and overall platform reliability.



Image: Explanation of the triple-layer screen technology for optimal display quality.

## KANALI Software Hub

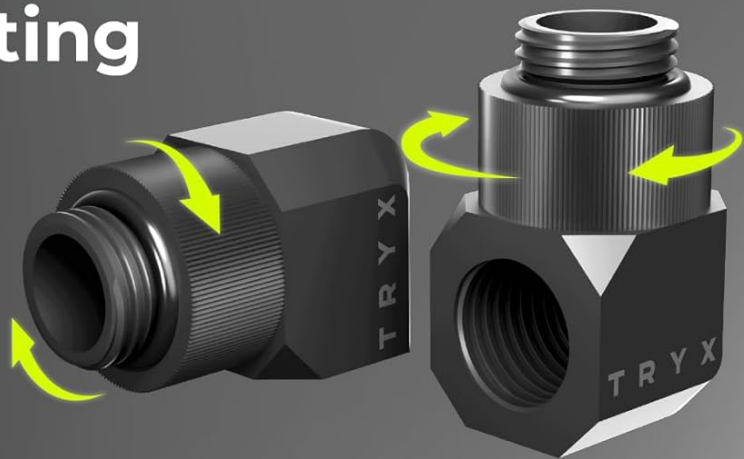
The KANALI Software Hub is your control center for the Panorama WB. It allows for extensive customization of the display and monitoring of system parameters.

- **System Monitoring:** View real-time CPU temperature, frequency, usage, GPU temperature, and more.
- **Content Customization:** Upload custom images (PNG, JPG, GIF) and videos (MP4, AVI) up to 1080P and 500MB.
- **Split-Screen Functionality:** Display different content on separate sections of the screen simultaneously.
- **Anamorphic Effects:** Apply various visual effects to your content.
- **VRM Fan Control:** Adjust the speed of the integrated VRM fan.

# 90° Rotary Adapter Fitting

360° Rotation  
Anti-slip Textured Grip

360°



## G1/4 Threaded Outlet

Compatibility with all  
standard quick-connects and  
liquid cooling components  
on the market.

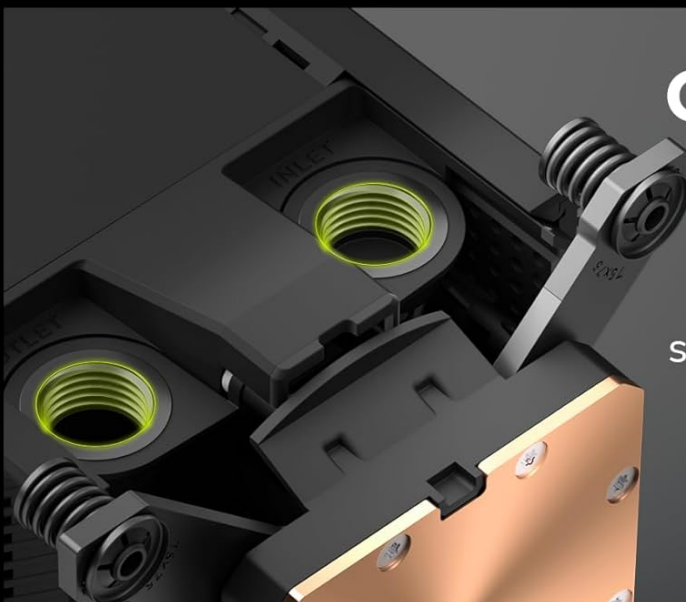


Image: KANALI software interface displaying system information options.

## 3D Content Library

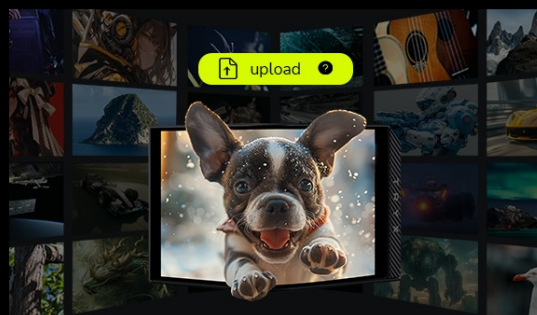
KANALI comes preloaded with officially customized 3D format content.



\* Constantly Updated

## Custom Content Library

KANALI allows users to create a content library that supports a variety of formats, with each content file supporting up to **1080P** and **500MB**.



\* PNG / JPG / GIF / MP4 / AVI Compatible.



Image: Overview of the KANALI Software Hub for display configuration and system monitoring.

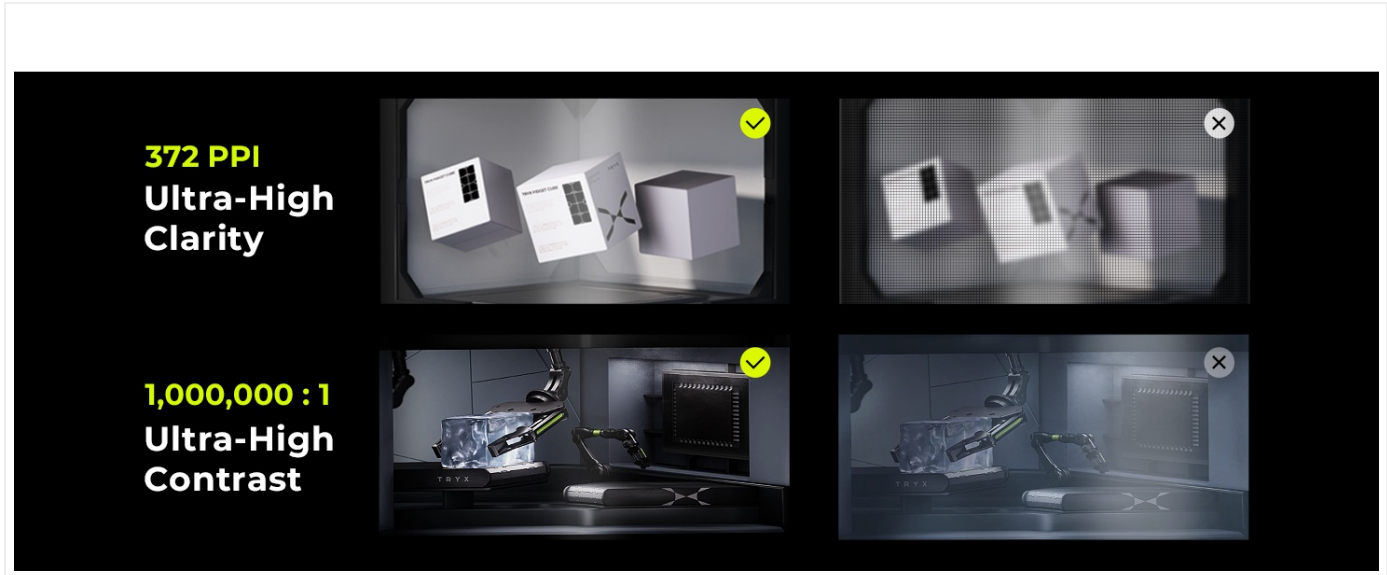


Image: The split-screen display feature in action, showing different content simultaneously.

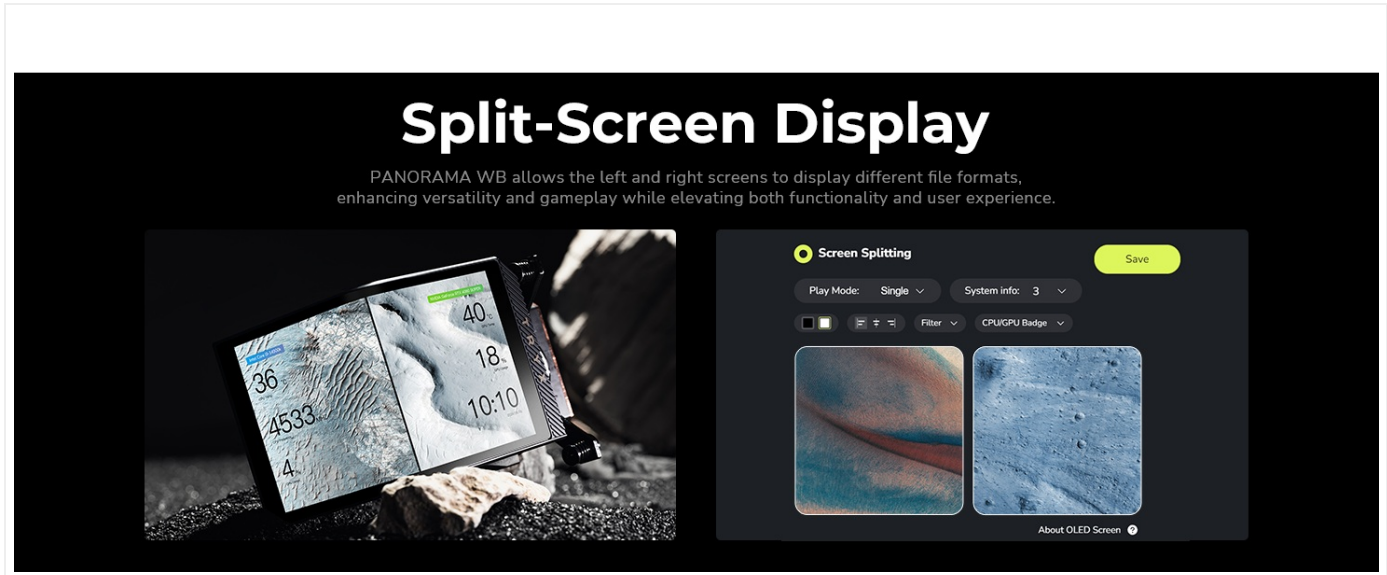


Image: KANALI's content library options, including preloaded 3D content and custom upload.

Integrated VRM Fan

The integrated VRM fan provides additional cooling to your motherboard's Voltage Regulator Modules (VRMs), contributing to system stability, especially during overclocking. Control the fan speed via the KANALI software.

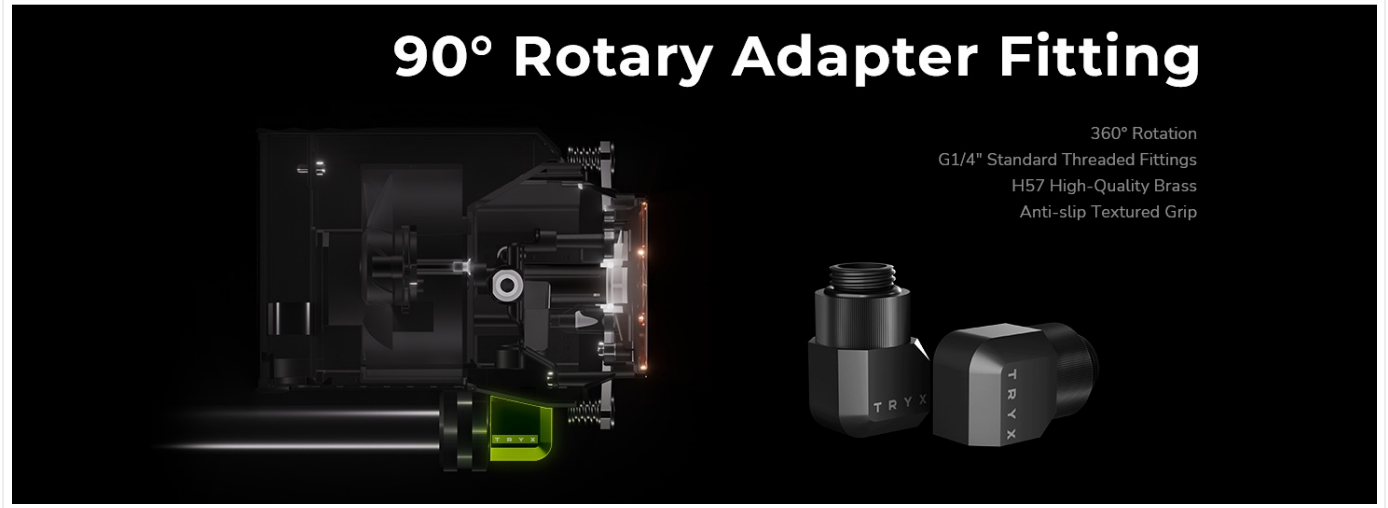


Image: The integrated VRM fan and its adjustable settings in KANALI software.

## MAINTENANCE

Regular maintenance ensures the longevity and optimal performance of your TRYX Panorama WB.

- **Display Cleaning:** Gently wipe the AMOLED display with a soft, lint-free cloth. For stubborn smudges, use a screen-safe cleaning solution. Avoid abrasive materials.
- **Coolant System Check:** Periodically inspect your liquid cooling loop for any signs of leaks, kinks in tubing, or coolant discoloration. Address any issues promptly.
- **Coolant Replacement:** Follow the recommendations of your coolant manufacturer for replacement intervals.
- **Dust Removal:** Use compressed air to clear any dust accumulation around the VRM fan and water block fins to maintain airflow.

## TROUBLESHOOTING

If you encounter issues with your TRYX Panorama WB, refer to the following common problems and solutions.

Problem	Possible Cause	Solution
Display is blank or not showing content.	Loose USB connection. KANALI software not running or configured. Display power issue.	Check USB cable connection to motherboard and water block. Ensure KANALI software is installed and running in the background. Verify display settings within the software. Restart your computer.
High CPU temperatures.	Improper water block mounting. Insufficient thermal paste application. Air bubbles in the loop. Pump malfunction.	Re-mount the water block, ensuring even pressure and proper thermal paste application. Bleed the liquid cooling loop to remove air bubbles. Verify pump operation.

Problem	Possible Cause	Solution
VRM fan is noisy or not spinning.	Fan cable disconnected. Incorrect fan speed setting in KANALI. Dust accumulation.	Check the VRM fan's power connection. Adjust fan speed settings in KANALI software. Clean any dust from the fan blades.
Software (KANALI) not detecting the device.	USB connection issue. Software driver issue.	Ensure the USB cable is securely connected. Try a different USB port. Reinstall the KANALI software and drivers.

## SPECIFICATIONS

Feature	Detail
Product Dimensions	9.1"L x 6.1"W x 6.1"H
Brand	TRYX
Power Connector Type	4-Pin
Voltage	12 Volts (DC)
Cooling Method	Water
Compatible Devices	CPU
Noise Level	22 Decibels
Material	Aluminum, Copper, Polybutylene Terephthalate
Maximum Rotational Speed (VRM Fan)	3300 RPM
Air Flow Capacity (VRM Fan)	17.4 Cubic Feet Per Minute
Item Weight	2.62 pounds
Model Number	L-P0CL-DS0M-G0K
Display Type	6.67-inch Curved 2K AMOLED
Display Refresh Rate	60Hz
Fittings	G1/4" Threaded Outlet, 90° Rotary Fittings
CPU Socket Compatibility	Intel LGA 1851/1700/1200/115x, AMD AM4/AM5

## PRODUCT OVERVIEW VIDEO

Watch this official video for a visual overview of the TRYX Panorama WB CPU Water Block's features and aesthetics.



Video: Official product overview of the TRYX Panorama WB CPU Water Block, demonstrating its design and display features.

# WARRANTY AND SUPPORT

---

For detailed warranty information, technical support, or to contact customer service, please visit the official TRYX website or refer to the warranty card included with your product.

[Visit the TRYX Store on Amazon](#)

