

EUHOMY CIM012-100BS-03

EUHOMY Commercial Ice Maker (Model CIM012-100BS-03) Instruction Manual

Your guide to efficient ice production and machine care.

1. PRODUCT OVERVIEW

The EUHOMY Commercial Ice Maker is designed for high-efficiency ice production, suitable for both home and commercial environments. This machine produces up to 105 lbs of clear ice per day and features a 33 lbs storage capacity. It includes a smart LCD control panel for easy operation, adjustable ice cube thickness, and an automatic cleaning function.



Figure 1: EUHOMY Commercial Ice Maker and included accessories (water filter, hoses, ice scoop).

2. SAFETY INSTRUCTIONS

- Ensure the ice maker is placed on a stable, level surface.
- Do not block ventilation openings.
- Connect to a grounded power outlet.
- Keep the appliance away from heat sources and direct sunlight.
- Do not immerse the appliance in water or other liquids.
- Unplug the appliance before cleaning or maintenance.
- Keep children away from the appliance during operation.
- Ensure the drain pipe is positioned below the machine's drain for proper gravity drainage.
- Allow the machine to stand upright for at least 24 hours before first use.

3. SETUP AND INSTALLATION

Proper installation is crucial for the optimal performance and longevity of your ice maker.

3.1 Unpacking

- Carefully remove the ice maker from its packaging.
- Inspect the unit for any shipping damage. Contact your retailer immediately if damage is found.
- Remove all packing materials, including tape and protective films.
- Ensure all accessories are present: water filter, water inlet hose, drain hose, ice scoop.

3.2 Placement

- Place the ice maker on a firm, level surface capable of supporting its weight when full of ice and water.
- Ensure adequate ventilation around the unit. Maintain at least 5 inches of space from walls and other objects.
- Avoid placing the unit near heat sources or in direct sunlight.
- The ambient temperature should be between 50°F (10°C) and 90°F (32°C) for optimal performance.

3.3 Water Connection

1. **Connect the Water Filter:** Attach the provided water filter to the water inlet hose.
2. **Connect to Faucet:** Connect one end of the water inlet hose to a cold water supply faucet.
3. **Connect to Ice Maker:** Connect the other end of the water inlet hose (with filter) to the water inlet port on the back of the ice maker.
4. **Connect the Drain Hose:** Attach the drain hose to the drain outlet on the back of the ice maker. Ensure the drain hose is positioned lower than the machine's drain for proper gravity drainage into a suitable drain.

Simple Installation

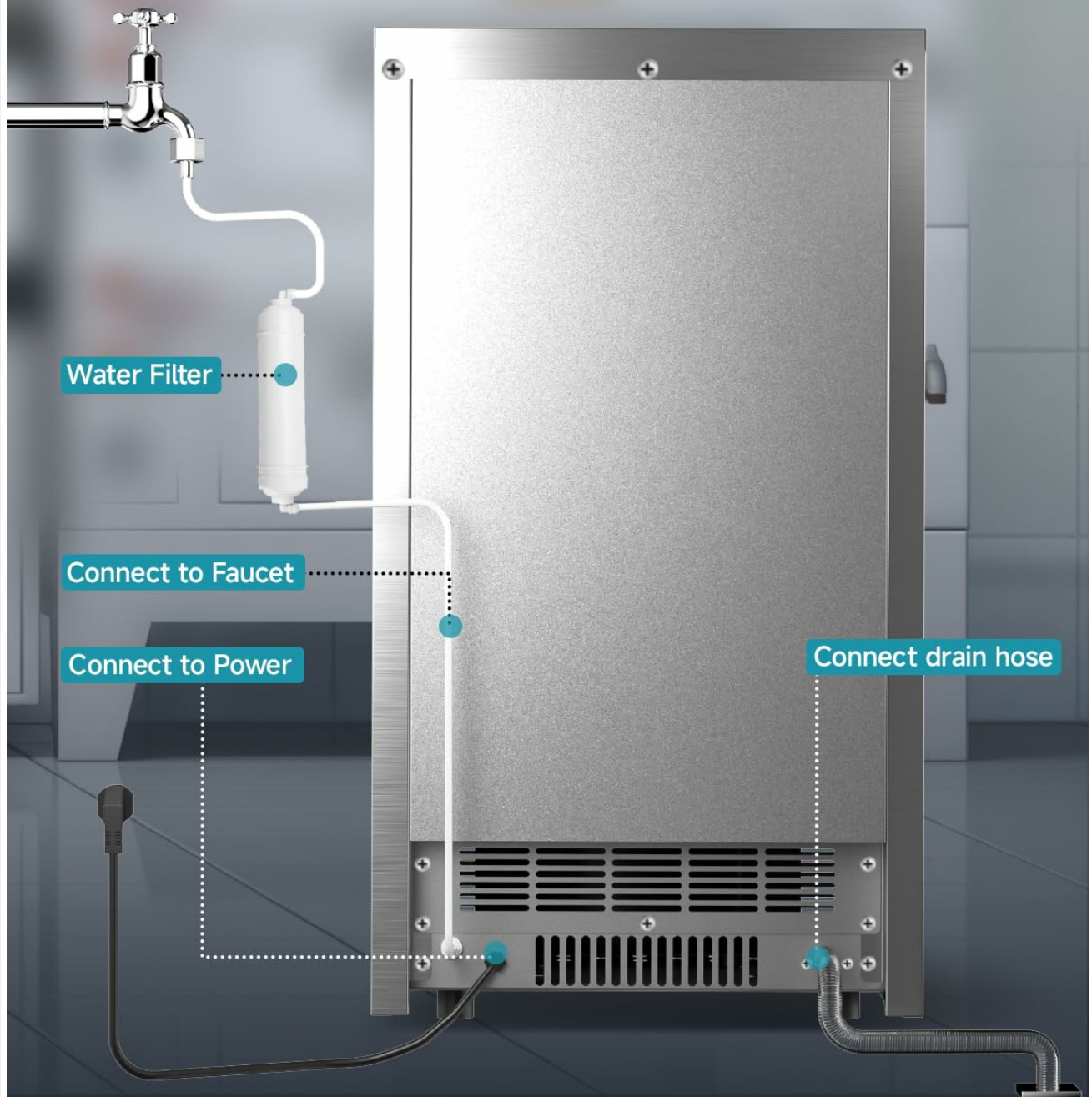


Figure 2: Illustration of water filter, faucet, power, and drain hose connections.

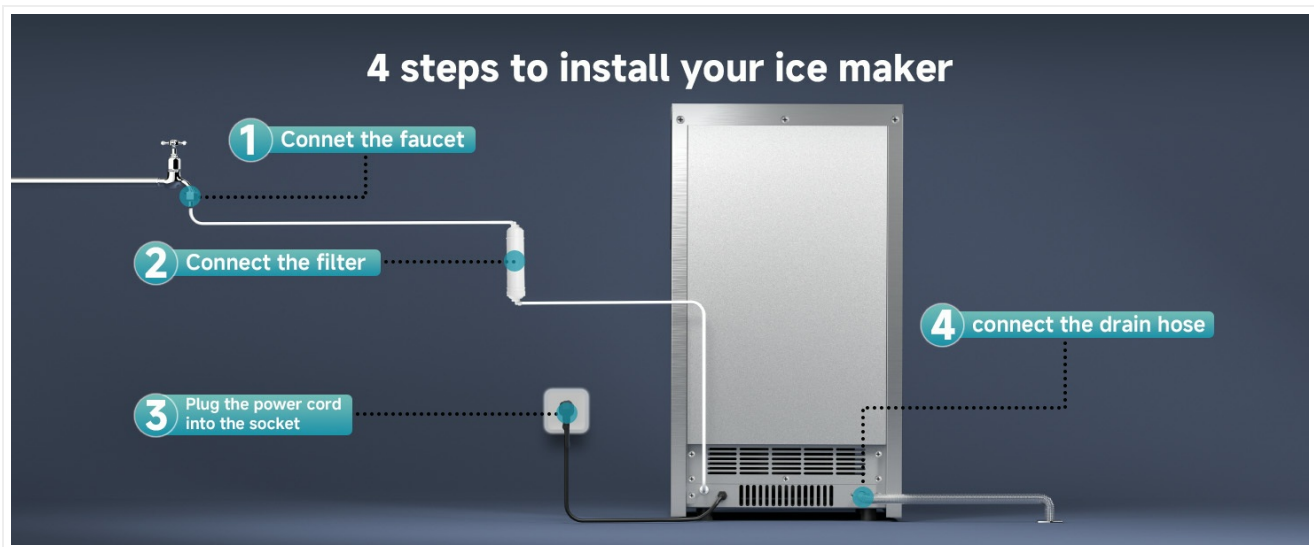


Figure 3: Step-by-step guide for ice maker installation.

3.4 Power Connection

- Plug the power cord into a grounded electrical outlet.
- **Important:** After installation, allow the ice maker to stand upright for at least 24 hours before plugging it in and operating it. This allows refrigerants to settle.

4. OPERATING INSTRUCTIONS

The EUHOMY ice maker features an intuitive control panel for easy operation.

Easy to Operate

Intelligent touch panel, let you operate your ice maker more easily

 **Press and hold for 5s**
to unlock the child lock



Figure 4: Intelligent touch control panel with various functions.

4.1 Control Panel Functions

- **POWER:** Turns the machine on/off.
- **ICE MAKING:** Indicates the machine is currently making ice.
- **RESERVATION/CLEAN:** Used for setting the timer or initiating the cleaning cycle.
- **STOPPAGE:** Indicates a temporary halt in operation.
- **ICE FULL:** Illuminates when the ice storage bin is full.
- **ICE SHEDDING:** Indicates ice is being released from the evaporator.

- **CLEAN:** Indicates the machine is in cleaning mode.
- **TIME UP/TIME DOWN:** Adjusts timer settings or ice thickness.
- **HOT:** Indicates a high-temperature condition.
- **LIGHT:** Controls the interior blue light. Press and hold for 5 seconds to unlock the child lock.

4.2 Initial Operation

1. After connecting water and power, press the **POWER** button to turn on the machine.
2. Perform an initial cleaning cycle before making the first batch of ice (refer to Section 5.1).
3. The machine will automatically start the ice-making process once the cleaning is complete and water supply is confirmed.

4.3 Adjusting Ice Cube Thickness

You can adjust the thickness of the ice cubes by modifying the ice-making time.

- Use the "TIME UP" (^) and "TIME DOWN" (v) buttons to adjust the desired ice-making duration.
- A longer duration results in thicker ice cubes.
- Typical ice-making times for different thicknesses:
 - **Thin:** Approximately 10 minutes
 - **Medium:** Approximately 15 minutes
 - **Thick:** Approximately 20 minutes

Time Control Ice Thickness

Use the " ^ v "button to get the ice of different thickness



Figure 5: Ice thickness adjustment based on ice-making time.

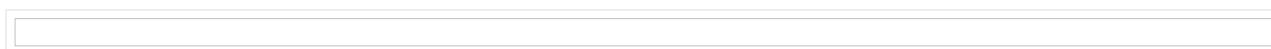


Figure 6: Visual guide to adjusting ice cube thickness for various uses.

4.4 24-Hour Timer Function

The timer function allows you to set a delayed start or stop time for the ice maker.

1. Press the **RESERVATION/CLEAN** button.
2. Use the "TIME UP" (^) and "TIME DOWN" (v) buttons to adjust the desired delay time in hours (up to 24

hours).

3. The machine will start or stop operation after the set time.



Figure 7: Setting the 24-hour timer on the control panel.

4.5 Interior Blue Light

The ice maker is equipped with an interior blue light for visibility. Press the **LIGHT** button to turn it on or off.

4.6 Child Lock Function

To prevent accidental operation, the control panel has a child lock feature.

- If the **LIGHT** button is blinking, the control panel is locked.
- To unlock, press and hold the **LIGHT** button for 5 seconds.

Your browser does not support the video tag.

Video 1: Demonstration of the EUHOMY ice maker's features, including interior light, fast ice making, adjustable ice cube size, 24-hour timer, and automatic cleaning.

5. MAINTENANCE AND CLEANING

Regular cleaning and maintenance ensure hygienic ice production and extend the lifespan of your machine.

5.1 Automatic Cleaning Function

1. Ensure the machine is connected to a water supply and the drain hose is properly positioned.
2. Press and hold the **CLEAN** button for 5 seconds to activate the self-cleaning function.
3. The cleaning cycle typically takes 5 minutes. The machine will automatically rinse its internal components.
4. It is recommended to perform this cleaning cycle twice before making the first batch of ice and regularly thereafter based on usage.

Self-Cleaning Function



Press 'CLEAN' for 5sec to
start self-cleaning



Wait for **5** mins to finish



Figure 8: Activating the self-cleaning function.



Figure 9: Initiating the automatic cleaning cycle.

5.2 Manual Cleaning and Descaling

- **Daily Drainage:** Pull out the small hose on the right side of the water tank to drain water once a day.
- **Exterior Cleaning:** Wipe the exterior of the machine with a soft, damp cloth. Do not use abrasive cleaners or solvents.
- **Interior Cleaning:** For thorough cleaning, especially to remove mineral buildup (descaling), use an ice machine cleaner solution as per the cleaner's instructions. Follow with multiple rinse cycles.
- **Water Filter Replacement:** Replace the water filter periodically to ensure clean water supply and optimal ice quality.

6. TROUBLESHOOTING

Refer to the following common issues and solutions before contacting customer support.

Problem	Possible Cause	Solution
Control panel unresponsive.	Child lock is active. The "Light" button may be blinking.	Press and hold the LIGHT button for 5 seconds to unlock the child lock.
"Light" button blinking.	Indicates the control panel is locked.	Press and hold the LIGHT button for 5 seconds to unlock the child lock and resume operations.
No ice production.	No water supply, power issue, or machine not upright for 24 hours.	Check water connections and supply. Ensure power is connected. If newly installed, wait 24 hours before operation.
Ice is too thin/thick.	Ice-making time setting is incorrect.	Adjust ice-making time using the "TIME UP" (^) and "TIME DOWN" (v) buttons.
"ICE FULL" indicator on, but bin not full.	Ice sensor may be obstructed or faulty.	Clear any ice blocking the sensor. Clean the sensor if necessary.

Q How should I do if the control panel does not work well?

A When you click a button on the panel and find no response, please check if the **"Light"** button is blinking. If it is blinking, **press and hold the "Light" button for 5 seconds** to unlock the child lock.

Q Why does the "Light" button keep blinking when I hit the upper arrow ?

A When the "Light" button is blinking, the panel is locked, and you need to **press and hold the "Light" button for 5 seconds** to unlock the child lock and continue other operations.

Figure 10: Common questions and answers regarding control panel functionality.



Figure 11: Detailed explanation for resolving a blinking "Light" button on the control panel.

7. SPECIFICATIONS

Detailed technical specifications for the EUHOMY Commercial Ice Maker.

Feature	Specification
Model Name	CIM012-100BS-03
Brand	EUHOMY
Ice Production Capacity	105 lbs / 24 hours
Ice Storage Capacity	33 lbs
Ice Cube Production Time	8-12 minutes (45 cubes per batch)
Product Dimensions (D x W x H)	16.14"D x 16.93"W x 30.9"H
Weight	73.28 Pounds
Wattage	255 watts
Material	Stainless Steel body, Pure Copper Compressor
Certifications	ETL certified for commercial use

Product Information

Product Specification

Color	Silver
Voltage	110V-120V/60HZ
Ice storage capacity	33lbs
Ice Production	100lbs/24H
Ice production time	10-13Mins/Batch
Dimension	16.93*16.14*30.9in



Drain Hose



Filter Water



Ice scoop



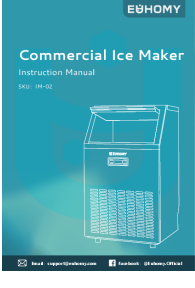
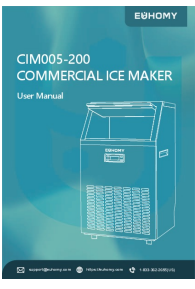
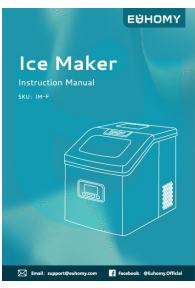
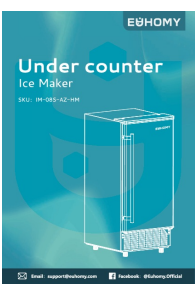
Figure 12: Summary of product specifications and dimensions.

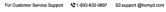
8. WARRANTY AND SUPPORT

For warranty information and customer support, please refer to the documentation included with your product or contact EUHOMY customer service directly.

- **Customer Support:** For assistance, please contact EUHOMY customer service.
- **Returns:** This product is returnable until January 31, 2026. Please check your purchase details for specific return policies.

Related Documents - CIM012-100BS-03

	<p>Euhomy Commercial Ice Maker IM-02 Instruction Manual</p> <p>Comprehensive instruction manual for the Euhomy Commercial Ice Maker IM-02, covering safety precautions, installation, operation, cleaning, maintenance, specifications, warranty, and troubleshooting for optimal ice production.</p>
	<p>Euhomy CIM005-200 Commercial Ice Maker User Manual</p> <p>Comprehensive user manual for the Euhomy CIM005-200 Commercial Ice Maker, covering setup, operation, cleaning, maintenance, troubleshooting, and warranty information.</p>
	<p>Euhomy IM-F Ice Maker: Instruction Manual, Operation, and Troubleshooting Guide</p> <p>Comprehensive guide for the Euhomy IM-F ice maker, covering safety precautions, operation, installation, maintenance, specifications, warranty, and troubleshooting tips.</p>
	<p>Euhomy Under Counter Ice Maker IM-08S-AZ-HM User Manual and Guide</p> <p>Comprehensive user manual for the Euhomy IM-08S-AZ-HM under counter ice maker, covering specifications, operation, maintenance, installation, troubleshooting, and safety information.</p>



Discover the EUHOMY IM021-BGR-EH-HD, a compact and efficient grey countertop ice maker. Produces up to 27 lbs of bullet ice daily with fast 6-minute cycles, self-cleaning, and quiet operation. Includes ice scoop.



This instruction manual provides detailed information on the operation, installation, maintenance, and troubleshooting of the Euhomy IM-02 Automatic Ice Maker. It covers safety precautions, electrical requirements, cleaning procedures, and technical specifications.