

ReIndoo TB02

ReIndoo TB02 Android 15 Tablet User Manual

Model: TB02

1. INTRODUCTION

This manual provides detailed instructions for the setup, operation, maintenance, and troubleshooting of your ReIndoo TB02 Android 15 Tablet. Please read this manual thoroughly before using your device to ensure proper functionality and to maximize your user experience. Keep this manual for future reference.

2. WHAT'S IN THE BOX

Verify that all items are present in the package:

- 1 x 10.1 inch ReIndoo Android Tablet
- 1 x Keyboard
- 1 x Mouse
- 1 x Stylus Pen
- 1 x Foldable Protective Case
- 1 x Screen Protector
- 1 x Charging Head
- 1 x USB-C Charger Cable
- 1 x User Manual (this document)

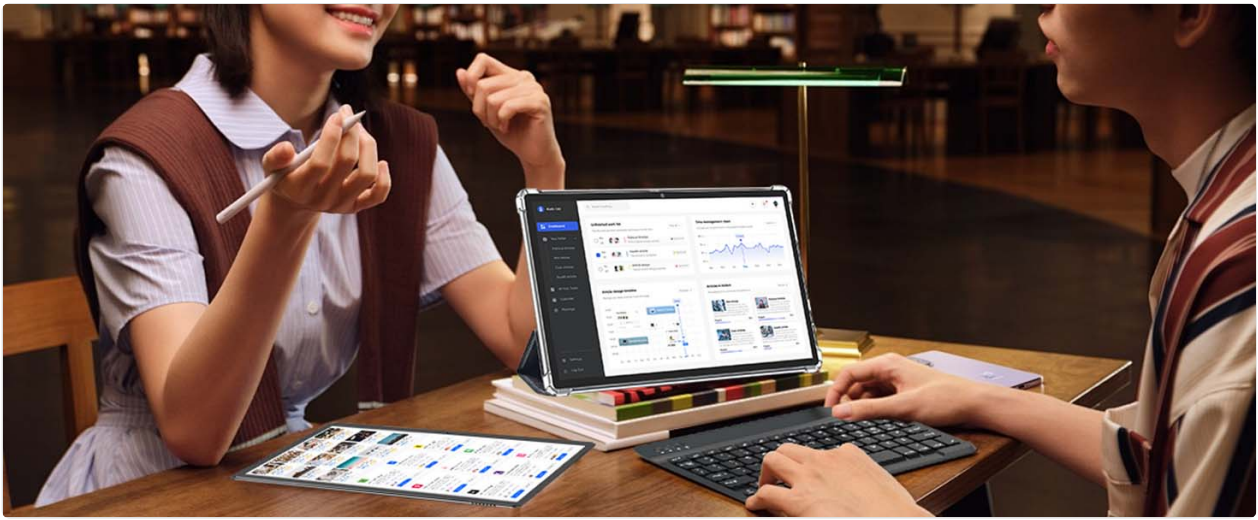


Image: Contents of the Relndoo TB02 tablet package.

3. PRODUCT OVERVIEW

The Relndoo TB02 is a 10.1-inch Android 15 tablet designed for versatility and performance. It features an octa-core processor, ample memory, and a suite of accessories to enhance productivity and entertainment.

Relndoo TB02 Pro Tablet IMMERSIVE EXPERIENCE



YOUR PORTABLE ENTERTAINMENT AND LEARNING CENTER, A MACHINE TO MASTER A COLORFUL LIFE

- Octa-core processor runs mainstream apps smoothly, say goodbye to lagging
- Ultra-long battery life, travel without power
- Durable body design + Kids Mode, shared by the whole family
- Split-screen multitasking, with Bluetooth keyboard and mouse doubles efficiency
- Type-C fast charging port + extended storage support, standard for pragmatism



Image: Key features and components of the Relndoo TB02 tablet.

3.1 Physical Components

- **Display:** 10.1-inch IPS display with 1280x800 pixel resolution.
- **Cameras:** 5MP front camera and 13MP rear camera.
- **Ports:** USB-C port for charging and data transfer, 3.5mm headphone jack.
- **Speakers:** Dual speakers for enhanced audio.
- **Buttons:** Power button, Volume up/down buttons.

Capture Your Vision with 5MP +8MP Cameras

With 13MP Rear Camera, you can snap breathtaking landscapes, create dynamic videos, and capture thrilling sports action in stunning detail and vibrant color. Plus, 8MP front camera brings your selfies to life, making every shot bright and full of energy



Image: Detailed overview of tablet features and specifications.

4. SETUP

4.1 Charging the Tablet

Before first use, fully charge the tablet. Connect the provided USB-C charger cable to the tablet's USB-C port and the charging head to a power outlet. The battery indicator on the screen will show charging status.

4.2 Power On/Off

- **To Power On:** Press and hold the Power button until the Relndoo logo appears.
- **To Power Off:** Press and hold the Power button until the power options appear on the screen, then select "Power off".
- **To Restart:** Press and hold the Power button until the power options appear, then select "Restart".

4.3 Initial Setup

Upon first power-on, follow the on-screen prompts to complete the initial setup:

1. Select your preferred language.
2. Connect to a Wi-Fi network.
3. Sign in with your Google account or create a new one. This is necessary to access the Google Play Store and other Google services.
4. Review and accept the terms and conditions.
5. Set up screen lock (PIN, pattern, password, or Face Unlock).

4.4 Connecting Accessories

The Relndoo TB02 tablet comes with a keyboard, mouse, and stylus for enhanced functionality.

4.4.1 Bluetooth Keyboard and Mouse

1. Ensure the keyboard and mouse are charged or have fresh batteries.
2. Turn on the keyboard and mouse.
3. On your tablet, go to **Settings > Connected devices > Bluetooth**.
4. Toggle Bluetooth **On**.
5. Select "Pair new device" and choose the keyboard and mouse from the list of available devices. Follow

any on-screen pairing instructions.

4.4.2 Stylus Pen

The stylus pen is typically passive and does not require pairing. Simply use it to interact with the tablet screen as you would with your finger.

5. OPERATING THE TABLET

5.1 Android 15 Features

Your tablet runs on the latest Android 15 OS, offering a smoother, safer, and more personalized experience. Key features include:

- **Gemini AI Engine:** For intelligent task optimization, faster app response, and smarter performance.
- **Split-Screen Multitasking:** Run two apps side-by-side for increased productivity.
- **Blue Light Reduction Mode:** Helps reduce eye strain during prolonged use.
- **Enhanced Privacy and Security:** Features like Pinnable Taskbar, Partial Screen Recording/Sharing, Upgraded App Force Stop, App Archiving, Sensitive Notifications, Lockdown Mode, and Upgraded Theft-Deterrent Protection.

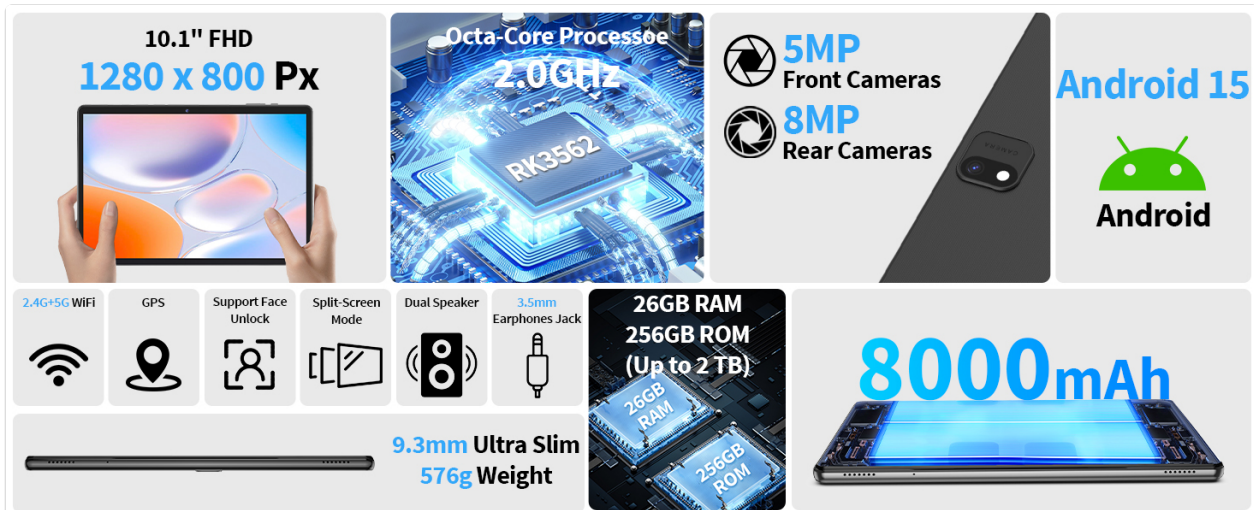


Image: Android 15 privacy and security features.

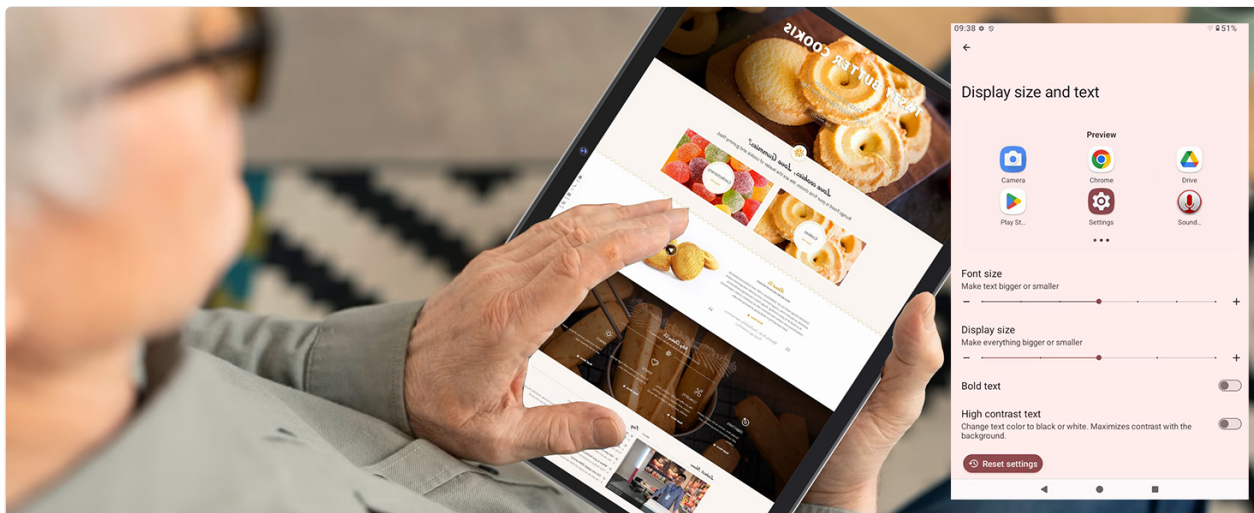


Image: Overview of new Android 15 system features.



Image: Advanced Android 15 features.

5.2 Display

The 10.1-inch IPS display provides vivid and detailed visuals. It supports Widevine L1 certification, allowing for high-quality playback of premium content (up to 1080p Full HD) on major streaming platforms like Netflix, Amazon Prime Video, Hulu, and Disney+.



Image: Widevine L1 support for high-definition streaming.

5.3 Storage & Memory

The tablet features 26GB of RAM (6GB physical + 20GB virtual) and 256GB of built-in storage. Storage can be expanded up to 2TB via a TF (microSD) card (sold separately), providing ample space for apps, photos, videos, and documents.



Sound Immersive

Vocals are clear, bass is steady, treble is transparent, whether it's movie dialog or game sound effects, can be accurately reproduced, more enjoyable to listen to

Image: Memory and storage capabilities.

5.4 Connectivity

- **Wi-Fi:** Supports dual-band Wi-Fi (2.4GHz & 5.0GHz) for stable and high-speed internet access.
- **Bluetooth:** Bluetooth 5.0 for seamless wireless pairing with headphones, speakers, and other accessories.
- **GPS:** Integrated GPS support for navigation and location-based services.

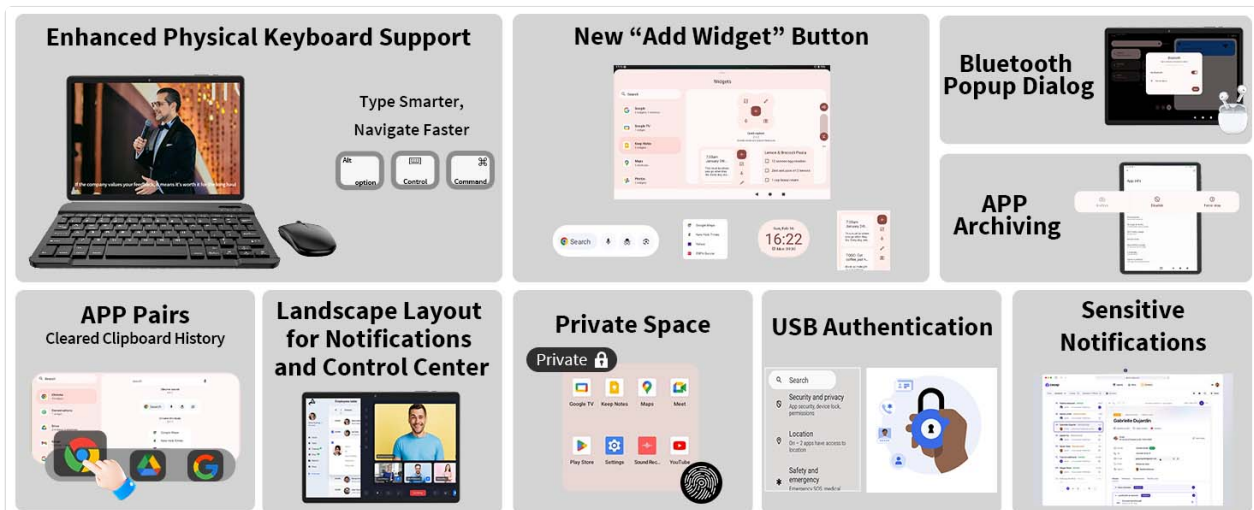


Image: Wi-Fi and Bluetooth connectivity features.

5.5 Camera

Capture moments with the tablet's 5MP front camera and 13MP rear camera. The rear camera is suitable for landscapes and dynamic videos, while the front camera is ideal for video calls and selfies.



Image: Tablet camera capabilities.

5.6 Battery Management

The tablet is equipped with an 8000mAh large-capacity battery, providing extended usage times. The USB-C port supports bidirectional fast charging.

- **Usage Times:** Approximately 8 hours for gaming, 12 hours for video playback, 18 hours for talk time, and 450 hours standby.
- To prolong battery life, reduce screen brightness, close unused apps, and disable Wi-Fi/Bluetooth when not in use.



Image: 8000mAh battery capacity and estimated usage times.

5.7 Google Services

Being GMS-certified, the tablet supports seamless browsing and downloading of applications from the Google ecosystem, including the Google Play Store. This ensures broad compatibility with your favorite apps.

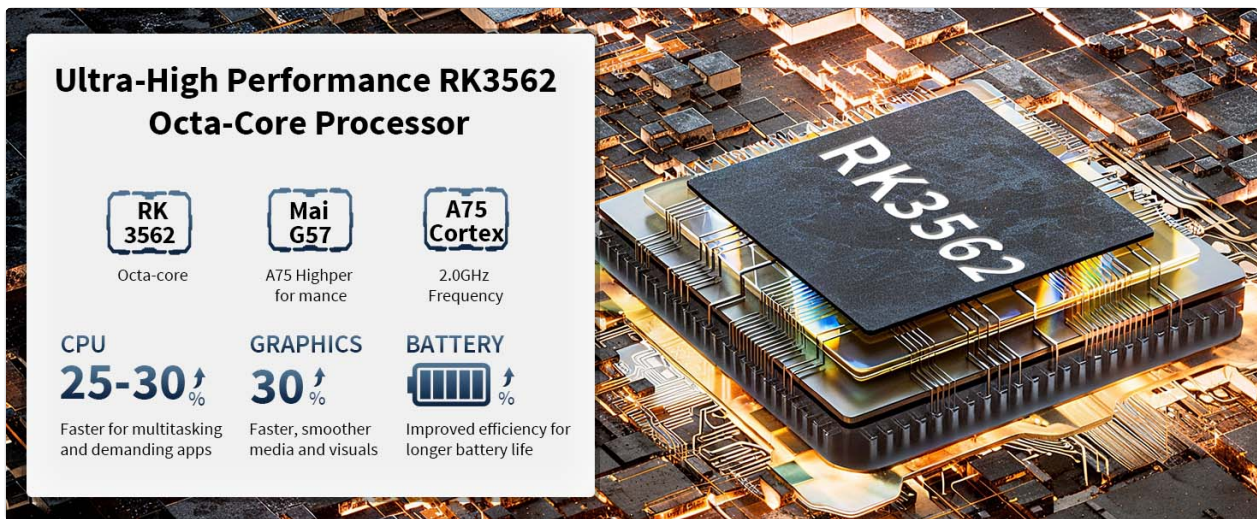


Image: Access to the Google Play Store.

6. MAINTENANCE

6.1 Cleaning

- Use a soft, lint-free cloth to clean the screen and body of the tablet.
- Avoid using harsh chemicals, abrasive cleaners, or aerosol sprays.
- Ensure the tablet is powered off and unplugged before cleaning.

6.2 Software Updates

Regularly check for and install system updates to ensure optimal performance, security, and access to new features. Go to **Settings > System > System update** to check for available updates.

6.3 Storage Management

To maintain performance, periodically manage your tablet's storage:

- Delete unnecessary apps and files.
- Clear cache data for apps in **Settings > Apps**.
- Transfer large files to a TF card or cloud storage.

7. TROUBLESHOOTING

If you encounter issues with your tablet, refer to the following common solutions:

Problem	Solution
Tablet does not power on	Ensure the tablet is fully charged. Press and hold the Power button for 10-15 seconds to force a restart.
Slow performance or apps crashing	Close unused apps. Clear app caches. Check for system updates. Restart the tablet. Ensure sufficient storage space.
Wi-Fi or Bluetooth connectivity issues	Toggle Wi-Fi/Bluetooth off and on. Restart your router (for Wi-Fi). Forget and re-pair Bluetooth devices. Ensure you are within range.

Problem	Solution
Battery drains quickly	Reduce screen brightness. Disable Wi-Fi, Bluetooth, and GPS when not in use. Close background apps. Check for apps consuming excessive power in battery settings.
Touchscreen unresponsive	Restart the tablet. Ensure the screen is clean and free of debris. If using a screen protector, ensure it is properly applied.

If the problem persists, please refer to the Warranty and Support section for further assistance.

8. SPECIFICATIONS

Feature	Detail
Model Name	TB02
Operating System	Android 15
Processor	3562 Octa-Core (ARM)
RAM	26GB (6GB physical + 20GB virtual)
Internal Storage	256GB
Expandable Storage	Up to 2TB via TF card (microSD, not included)
Screen Size	10.1 Inches
Display Resolution	1280x800 Pixels (IPS)
Front Camera	5MP
Rear Camera	13MP
Battery Capacity	8000mAh
Average Battery Life	12 Hours (usage)
Wi-Fi	2.4GHz & 5.0GHz Dual-Band
Bluetooth	Bluetooth 5.0
GPS	Supported
Dimensions (LxWxH)	10.7 x 7.5 x 2.5 inches
Item Weight	2.97 pounds
Color	Black

9. WARRANTY AND SUPPORT

For specific warranty information and customer support, please refer to the warranty card included with your product packaging or visit the official Relindoo website. You may also contact the retailer where you purchased

the device for assistance.