



[Manuals.plus](#) /

› [BOTLOG](#) /

› BOTLOG YSZ-PB035 64-inch Kitchen Pantry Storage Cabinet User Manual

BOTLOG YSZ-PB035

BOTLOG YSZ-PB035 64-inch Kitchen Pantry Storage Cabinet

USER MANUAL

Introduction

Thank you for choosing the BOTLOG YSZ-PB035 64-inch Kitchen Pantry Storage Cabinet. This versatile and stylish cabinet is designed to enhance your kitchen or dining area with ample storage and a dedicated space for appliances like a microwave. This manual provides essential information for safe assembly, proper usage, and effective maintenance to ensure long-lasting satisfaction with your product.



Image: This image shows the BOTLOG YSZ-PB035 64-inch Kitchen Pantry Storage Cabinet in its complete form, highlighting its black finish, frosted glass doors, and the open central compartment designed for appliances.

Safety Information

Please read and understand all safety instructions before assembly and use. Failure to follow these instructions may result in injury or damage to the product.

- **Assembly:** Always follow the assembly instructions carefully. Ensure all parts are correctly installed and fasteners are tightened securely.
- **Anti-Tipping Device:** It is crucial to use the provided anti-tip kit to secure the cabinet to the wall. This prevents accidental tipping, especially in households with children or pets.
- **Placement:** Ensure the cabinet is placed on a stable, level surface to prevent wobbling or instability.
- **Loading Capacity:** Do not overload the cabinet, especially the drawers and shelves. Distribute weight evenly. Refer to the specifications for maximum weight limits if available in the assembly guide.
- **Heat Sources:** Keep the cabinet away from direct heat sources, open flames, and excessive moisture to prevent damage to the material.
- **Top Surface:** Never place heavy objects on the very top of the cabinet, as this can compromise stability and cause damage.

Package Contents

Before beginning assembly, please verify that all components listed below are present and undamaged. If any parts are missing or damaged, please contact customer support.

- Cabinet Panels and Components
- Hardware (screws, dowels, cam locks, handles, anti-tip kit)
- User Manual (this document)
- Assembly Instructions (separate detailed guide)

Specifications

Brand	BOTLOG
Model Number	YSZ-PB035
Color	Black
Material	Wood, Glass (MDF)
Overall Dimensions (D x W x H)	15.7"D x 23.6"W x 64.1"H (39.9D x 59.9W x 162.8H cm)
Number of Drawers	4
Number of Shelves	4 (2 fixed, 2 adjustable)
Special Features	Adjustable Shelf, Frosted Glass Doors, Cable Management Hole, Anti-Tipping Device
Assembly Required	Yes

Setup and Assembly

The BOTLOG YSZ-PB035 cabinet requires assembly. Please follow the detailed, step-by-step instructions provided in the separate assembly guide included in your package. Ensure you have all necessary tools (typically a screwdriver and hammer) before you begin.

1. **Unpack and Verify:** Carefully unpack all components and compare them against the parts list in the assembly guide. Ensure all screws and parts are labeled and present.
2. **Prepare Workspace:** Choose a clean, spacious, and level area for assembly to prevent scratching or damaging the parts.
3. **Follow Instructions:** Assemble the cabinet strictly according to the numbered steps in the provided assembly manual. Do not overtighten screws.
4. **Install Anti-Tip Device:** Once the cabinet is fully assembled and in its final position, securely attach the anti-tip device to the wall using appropriate hardware for your wall type. This is a critical safety step.



Image: This image illustrates the detailed dimensions of the BOTLOG YSZ-PB035 Kitchen Pantry Storage Cabinet, including overall height (64.1 inches / 163 cm), width (23.6 inches / 60 cm), and depth (15.7 inches / 40 cm). It also shows the internal dimensions of the upper and lower cabinet sections, the microwave stand area, and the drawers, providing critical measurements for planning placement and storage.



Adjustable Shelf

Choose from 3 heights, and the shelf can be removed to accommodate taller items



4 Storage Drawers

Equally proportioned drawers facilitate organization and retrieval, optimizing storage space



Image: This image highlights key features of the cabinet. It shows the safety anti-tipping device for secure wall attachment, a convenient cord hole for appliance management in the microwave stand area, and the aesthetic frosted glass doors of the upper cabinets.

Operating and Usage

The BOTLOG YSZ-PB035 cabinet is designed for versatile storage in various rooms, including kitchens, dining rooms, and living rooms.

- **Microwave Stand:** The open central compartment is ideal for housing a microwave, toaster, coffee maker, or other small kitchen appliances. Utilize the integrated cable management hole on the back panel for neat wiring.
- **Upper Cabinets:** The two upper cabinets feature frosted glass doors, allowing for a subtle display of dishes, glassware, or decorative items while keeping them protected.
- **Adjustable Shelves:** The lower cabinet includes adjustable shelves. You can customize their height to accommodate taller items like bottles or small appliances, or remove them entirely for larger storage needs.
- **Storage Drawers:** The four pull-out drawers provide convenient storage for cutlery, utensils, spice bottles, or other small accessories, helping to keep your space organized.



Microwave Oven



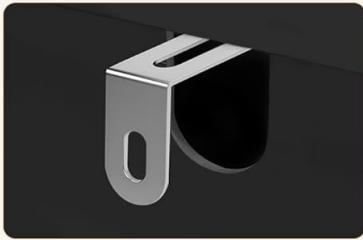
Coffee Maker



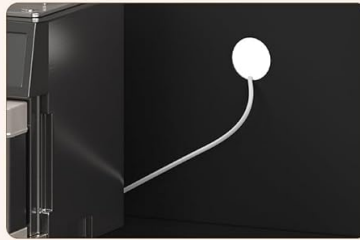
Plate



Spice



Safety Anti-tipping Device



Cord Hole



Frosted Glass Door

Image: This image displays the BOTLOG YSZ-PB035 Kitchen Pantry Storage Cabinet in a kitchen setting, showcasing its functionality with a microwave placed in the open central compartment. The upper cabinets with frosted glass doors are open, revealing stored items, and the lower drawers are visible, demonstrating its practical storage capabilities.



Image: This image focuses on the adjustable shelf feature within the lower cabinet, illustrating how the shelf height can be customized to accommodate various item sizes. It also provides a close-up view of one of the four storage drawers, highlighting its capacity for organizing kitchen essentials.



Image: This image presents another view of the BOTLOG YSZ-PB035 Kitchen Pantry Storage Cabinet, demonstrating its capacity for storing various kitchen items within its lower cabinet and drawers, with a microwave positioned in the open section.

Maintenance and Care

Proper care will help maintain the appearance and longevity of your BOTLOG cabinet.

- **Cleaning:** Wipe surfaces with a soft, damp cloth. For stubborn marks, use a mild, non-abrasive cleaner specifically designed for wood or furniture. Dry immediately with a clean cloth.
- **Avoid Harsh Chemicals:** Do not use abrasive cleaners, ammonia-based products, or solvents, as these can damage the finish.
- **Spills:** Clean up spills immediately to prevent staining or water damage.
- **Hardware:** Periodically check all screws and fasteners to ensure they remain tight. Retighten as necessary to maintain stability.
- **Glass Doors:** Clean frosted glass with a glass cleaner and a soft cloth.

Troubleshooting

If you encounter any issues with your cabinet, refer to the following common solutions:

- **Wobbly Cabinet:** Ensure the cabinet is on a level surface. Check and tighten all assembly screws. If the floor is uneven, use furniture levelers if available or shims.
- **Drawers Not Sliding Smoothly:** Verify that the drawer slides are correctly installed and aligned. Check for any obstructions in the tracks. Ensure drawers are not overloaded.
- **Doors Not Aligning:** Check the hinge adjustments. Most hinges allow for minor adjustments to align doors horizontally, vertically, and in depth. Refer to the assembly guide for specific hinge adjustment instructions.
- **Missing Parts:** If you discover missing parts during assembly, do not proceed. Contact BOTLOG customer support immediately for assistance.

Warranty and Support

BOTLOG products are manufactured with quality and customer satisfaction in mind. This product typically comes with a limited manufacturer's warranty covering defects in materials and workmanship. Please refer to the warranty information provided with your purchase or visit the official BOTLOG website for details. For technical support, replacement parts, or any questions regarding your BOTLOG YSZ-PB035 cabinet, please contact BOTLOG customer service through their official channels. Have your model number (YSZ-PB035) and purchase information ready when contacting support.