

## JIVOIT L-Shaped Double Twin Daybed with Trundle and Drawers

# JIVOIT Upholstered L-Shaped Double Twin Daybed with Trundle and Drawers Instruction Manual

Model: L-Shaped Double Twin Daybed with Trundle and Drawers

## 1. SAFETY INFORMATION

---

Please read and understand all instructions before beginning assembly and use. Keep this manual for future reference.

- **Adult Assembly Required:** This product requires adult assembly.
- **Two-Person Assembly Recommended:** For safety and ease of assembly, it is recommended that two adults assemble this daybed.
- **Keep Small Parts Away from Children:** During assembly, keep all small parts and packaging materials out of reach of children to prevent choking hazards.
- **Use on a Level Surface:** Ensure the daybed is assembled and used on a flat, level surface to prevent instability.
- **Regularly Check Connections:** Periodically check all bolts and screws to ensure they are tight. Retighten if necessary.
- **Maximum Weight Capacity:** The daybed and trundle each have a weight capability of 300 lbs. Do not exceed this limit.
- **Mattress Thickness:** Recommended mattress thickness for both daybed and trundle is 6 inches.

## 2. PACKAGE CONTENTS

---

Before assembly, verify that all components listed below are present and undamaged. If any parts are missing or damaged, do not proceed with assembly and contact customer support.

- Upholstered L-Shaped Daybed Frame (Multiple Sections)
- Trundle Bed Frame
- Storage Drawers (Quantity: 2 or 3, depending on model)
- Wood Slats for Daybed and Trundle
- Hardware Pack (Screws, bolts, washers, Allen wrench)
- Installation Manual (This document)

Note: The product is shipped in 3 separate packages. Ensure all packages have arrived before starting assembly.

### 3. SETUP AND ASSEMBLY

---

Follow these steps carefully for proper assembly. An Allen wrench is included in the hardware pack. A Phillips head screwdriver (not included) may also be required.

#### 3.1 Unpacking and Preparation

1. Clear a spacious area for assembly.
2. Carefully unpack all components and lay them out on a soft, clean surface to prevent scratches.
3. Identify all parts using the included parts list (if provided separately).

#### 3.2 Assembling the Main Daybed Frame

Begin by connecting the L-shaped sections of the daybed. Ensure all bolts are securely tightened but do not overtighten.



Image: Fully assembled L-shaped daybed with trundle and drawers, shown in a room. This image provides an overview of the final

product configuration.

### 3.3 Installing Wood Slats

Place the wood slats onto the designated support rails of both the main daybed sections and the trundle. Ensure slats are evenly spaced and secured if attachment points are present.

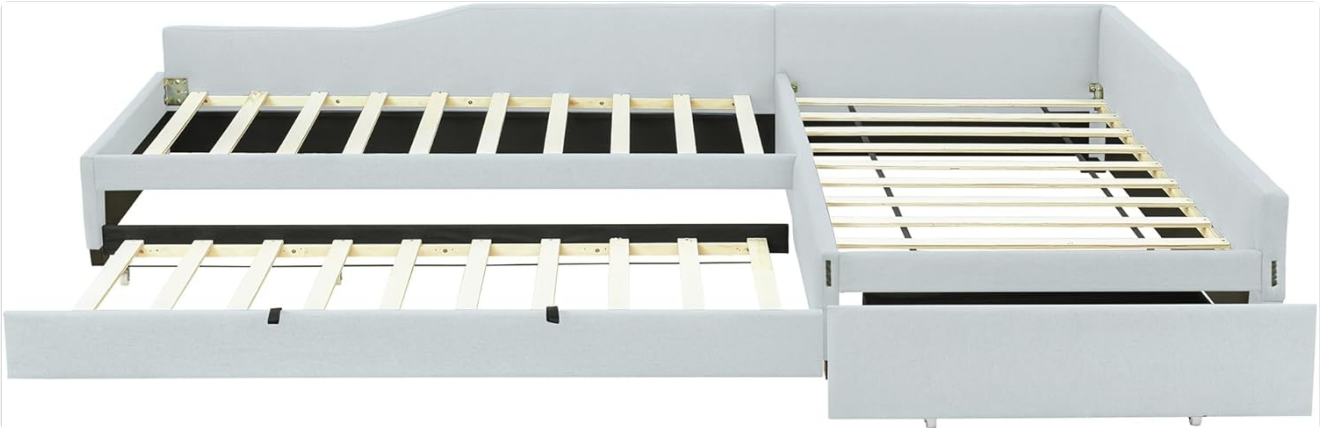


Image: Close-up view of the daybed's internal structure, highlighting the wood slat support system for the main bed and the partially extended trundle bed. This shows how the slats are positioned.



Image: An overhead view of the daybed frame with the trundle fully extended, revealing the complete wood slat foundation for both sleeping surfaces. This illustrates the full extension of the trundle.

### 3.4 Assembling and Inserting the Trundle and Drawers

Assemble the trundle frame and attach the wheels. Slide the trundle into its designated space under the main daybed. Assemble the storage drawers and insert them into their compartments.



Image: The L-shaped daybed with the trundle bed fully pulled out and the storage drawers open, demonstrating the multi-functional design. This shows the trundle and drawers in use.



Image: An angled view from below the daybed, showing the trundle bed and storage drawers in their retracted positions, revealing the underlying support structure. This highlights the integrated storage and trundle design.



Image: A different angled view from below the daybed, providing another perspective of the retracted trundle bed and storage drawers, emphasizing their compact integration. This offers an alternative view of the retracted components.

## 4. OPERATING INSTRUCTIONS

---

### 4.1 Using the Daybed

The L-shaped daybed provides two twin-sized sleeping or lounging surfaces. Place appropriate twin-sized mattresses (max 6-inch thickness recommended) on the wood slat foundations.

### 4.2 Extending the Trundle Bed

To use the trundle bed, gently pull the trundle frame from underneath the main daybed until it is fully extended. The trundle is equipped with wheels for easy movement. Ensure it is on a level surface before use.

### 4.3 Using the Storage Drawers

The integrated drawers can be pulled out to store items such as bedding, clothing, or toys. Push them back in fully when not in use to maintain a tidy appearance.

## 5. MAINTENANCE

---

Proper care will extend the life and appearance of your JIVOIT daybed.

- **Cleaning Upholstery:** For general cleaning, vacuum the upholstered surfaces regularly with a soft brush attachment to remove dust and debris. For spills, blot immediately with a clean, dry cloth. For stubborn stains, consult a professional upholstery cleaner or use a mild fabric cleaner according to its instructions, testing on an inconspicuous area first.
- **Cleaning Wood Components:** Wipe wood surfaces with a soft, damp cloth. Avoid harsh chemicals or abrasive cleaners. Dry immediately with a clean cloth.
- **Hardware Check:** Periodically check all screws, bolts, and connections to ensure they remain tight. Retighten as needed to maintain structural integrity.
- **Avoid Direct Sunlight:** Prolonged exposure to direct sunlight can cause fabric fading. Position the daybed away from direct sunlight or use window coverings.

## 6. TROUBLESHOOTING

---

If you encounter any issues with your daybed, refer to the following common problems and solutions:

Problem	Possible Cause	Solution
---------	----------------	----------

Problem	Possible Cause	Solution
Daybed feels wobbly or unstable.	Loose hardware connections. Uneven floor surface.	Check and tighten all bolts and screws. Ensure the daybed is on a level surface; use shims if necessary.
Trundle or drawers are difficult to pull out/push in.	Obstruction in the track. Wheels are dirty or damaged.	Inspect the tracks for any obstructions. Clean wheels and tracks. If wheels are damaged, contact customer support.
Squeaking noises during use.	Loose connections. Friction between wood slats and frame.	Tighten all hardware. Apply a small amount of furniture wax or felt pads where slats meet the frame to reduce friction.

## 7. SPECIFICATIONS

---

- **Brand:** JIVOIT
- **Material:** Plywood + Linen
- **Color:** Beige
- **Size:** Twin/Twin (L-Shaped)
- **Overall Product Dimensions:** 120" L x 78.5" W x 21.5" H
- **Individual Bed Dimensions:** 75.3" L x 39" W
- **Total Height:** 21.5"
- **Overall Product Weight:** 139.5 lbs
- **Weight Capability (Daybed/Trundle):** 300 lbs each
- **Recommended Mattress Thickness:** 6"
- **Assembly Required:** Yes
- **Number of Packages:** 3

# SIZE:INCH

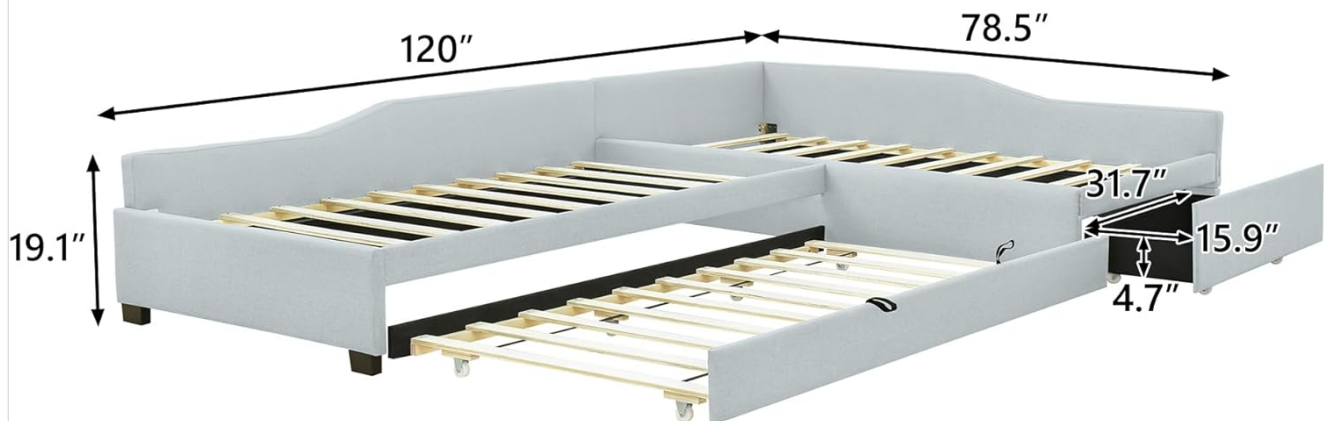


Image: A detailed diagram showing the key dimensions of the L-shaped daybed, including length, width, and height, as well as dimensions for the trundle and drawers. This provides precise measurements for planning and setup.

## 8. WARRANTY AND SUPPORT

For warranty information or assistance with your JIVOIT daybed, please refer to the purchase documentation or contact the retailer where the product was purchased. Keep your proof of purchase for any warranty claims. If you have any questions regarding assembly, missing parts, or product functionality, please contact JIVOIT customer support through the contact information provided on the product packaging or the retailer's website. Please have your model number and purchase date ready when contacting support.