

[Manuals.plus](#) /

› [LOKMAT](#) /

› LOKMAT 4G SIM Card Smart Watch (6GB+128GB) User Manual

LOKMAT 6GB RAM+128GB ROM

LOKMAT 4G SIM Card Smart Watch (6GB+128GB) User Manual

Model: 6GB RAM+128GB ROM

1. PRODUCT OVERVIEW

The LOKMAT 4G SIM Card Smart Watch is a versatile device combining smartwatch functionalities with a standalone phone. It features a 2.4-inch TFT screen, dual cameras, and runs on Android 10.7. This manual provides instructions for its setup, operation, and maintenance.



Figure 1.1: LOKMAT 4G SIM Card Smart Watch (6GB+128GB)

2. WHAT'S IN THE BOX

Verify that all items are present in the package:

- LOKMAT Smart Watch
- Watch Band
- Charging Cable
- User Manual

Packing List Details



Figure 2.1: Contents of the LOKMAT Smart Watch package, including the watch, charging cable, and user manual.

3. SETUP GUIDE

3.1 SIM Card Installation

The smartwatch supports Nano SIM cards for standalone calling and network access. Ensure the SIM card is activated by your carrier before installation.

1. Locate the SIM card slot on the side of the watch.
2. Carefully insert a Nano SIM card into the tray.
3. Push the tray back into the watch until it clicks into place.

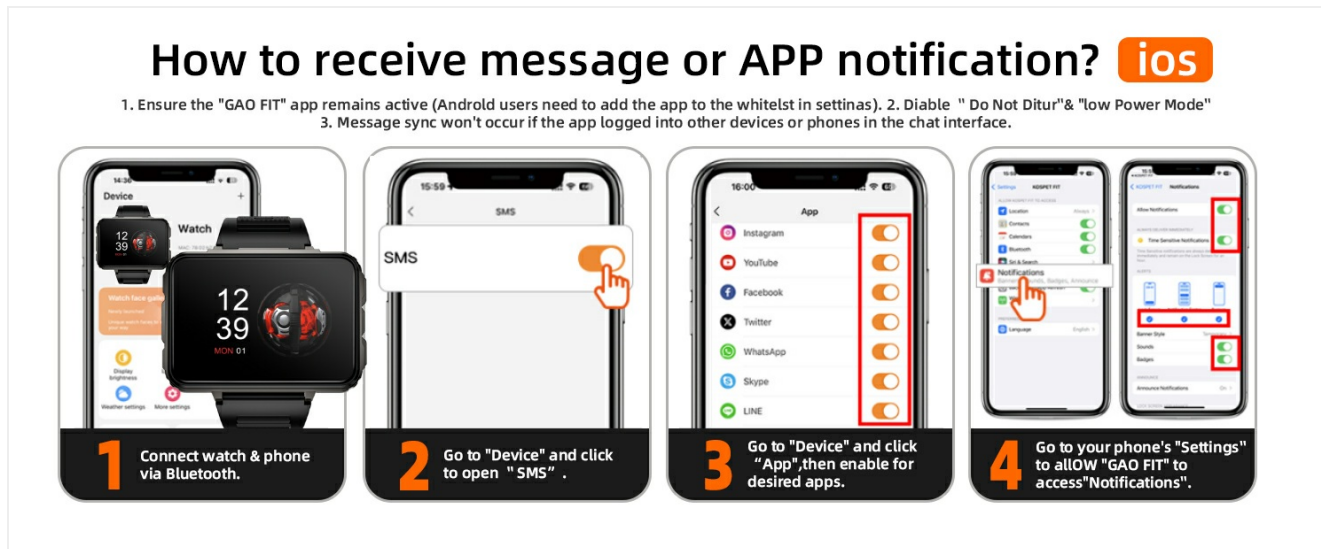


Figure 3.1: Illustration of the SIM card slot and Nano SIM card for network connectivity.

3.2 Initial Power On

To power on the device for the first time:

1. Press and hold the power button located on the side of the watch for approximately 2 seconds.
2. The LOKMAT logo will appear, indicating the device is booting up.
3. The first boot may take longer than usual. Please wait for the system to load completely.
4. Once the system is ready, select your preferred language.

3.3 Charging the Device

Before first use, fully charge the smartwatch. Use the provided magnetic charging cable.

1. Connect the magnetic end of the charging cable to the charging contacts on the back of the watch.
2. Connect the USB-A end of the cable to a compatible USB power adapter (5V/1A or higher) or a computer USB port.
3. The watch screen will display a charging indicator.
4. A full charge typically takes a few hours.

3.4 App Connection

To unlock full features and synchronize data, connect your smartwatch to the companion app, "GAO FIT".

1. Download the "GAO FIT" app from the Google Play Store (for Android) or Apple App Store (for iOS).
2. Ensure Bluetooth is enabled on your smartphone.
3. Open the "GAO FIT" app and navigate to the "Device" section.
4. Select "Add a new device" and follow the on-screen prompts to pair with your LOKMAT Smart Watch.

5. Confirm the pairing request on both your phone and the watch.



Figure 3.2: The smartwatch connected to the GAO FIT app, displaying health data and settings.

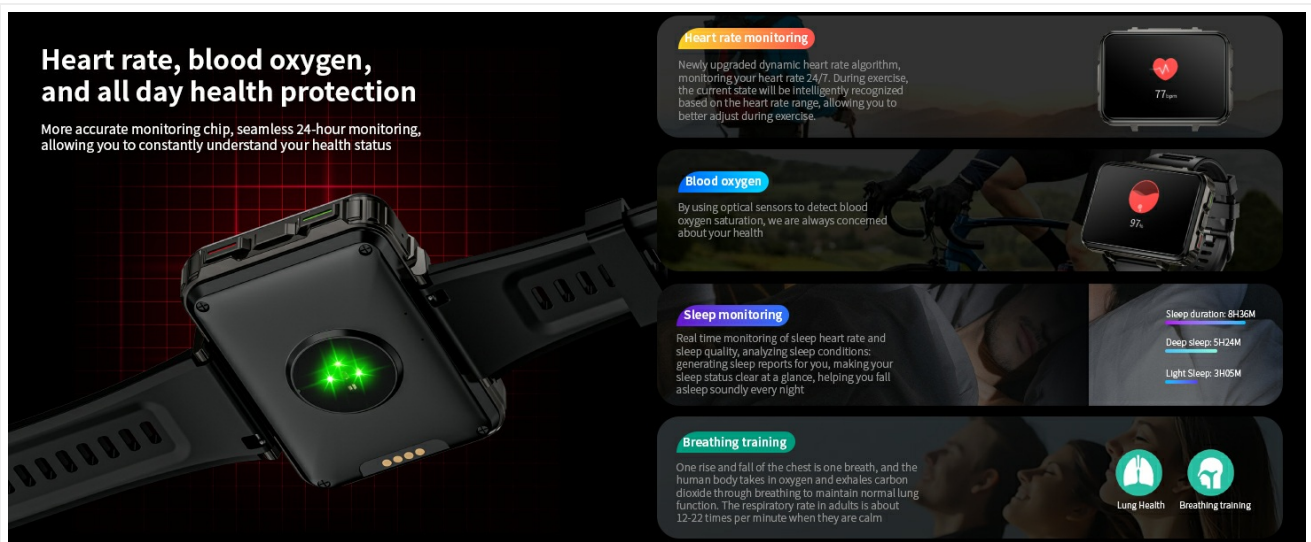


Figure 3.3: Step-by-step guide for connecting the smartwatch to an iOS device via the GAO FIT app.

3.5 Notification Setup

To receive messages and app notifications on your smartwatch, configure settings in the GAO FIT app and your phone's system settings.

For iOS Devices:

1. Ensure the GAO FIT app is running in the background.
2. In the GAO FIT app, go to "Device" > "SMS" and enable desired apps for notifications.
3. On your iPhone, go to "Settings" > "Bluetooth", tap the 'i' icon next to your watch, and enable "Share System Notifications".
4. Also, in iPhone "Settings" > "Notifications", find "GAO FIT" and ensure notifications are allowed.

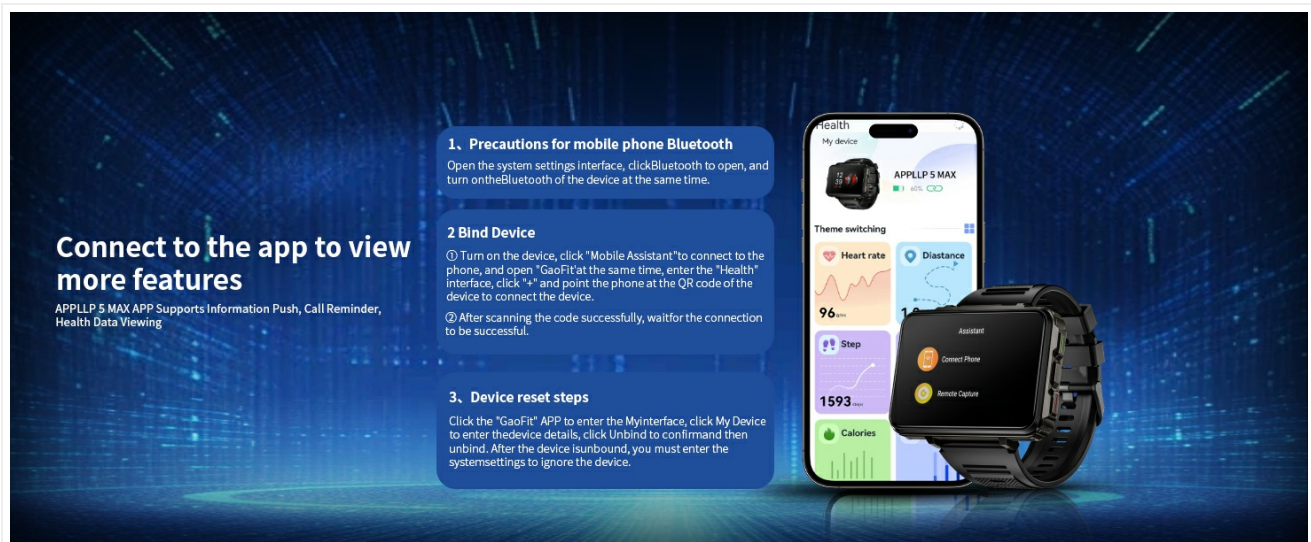


Figure 3.4: Instructions for enabling message and app notifications on iOS devices.

For Android Devices:

1. Keep the GAO FIT app active and add it to your phone's whitelist to prevent background closure.
2. Disable "Do Not Disturb" and "Low Power Mode" on your phone.
3. In the GAO FIT app, go to "Device" > "SMS Reminder" and enable notifications for desired applications.
4. Grant "GAO FIT" access to notifications in your phone's system settings.

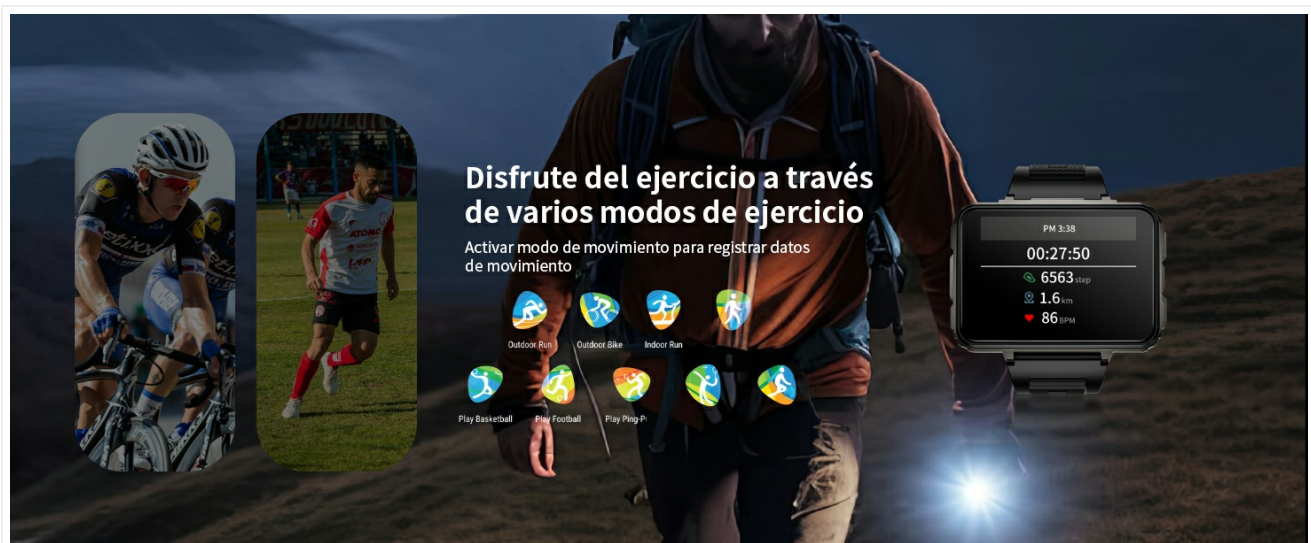


Figure 3.5: Instructions for enabling message and app notifications on Android devices.

4. OPERATING INSTRUCTIONS

4.1 Basic Navigation

The smartwatch features a touch-sensitive screen for navigation:

- **Swipe Up:** Display exercise data.
- **Swipe Down:** Access quick settings (battery level, time, settings).
- **Press and Hold Screen:** Change watch faces.
- **Side Button:** Typically acts as a back button or to access the main menu.

4.2 Dual System Switching

The watch supports both an independent Android 10.7 system and a sports bracelet mode. You can switch between these modes with a single click to optimize for daily smart operations or lightweight monitoring during sports.

4.3 Making and Receiving Calls

With a Nano SIM card installed, the smartwatch can make and receive calls independently.

- Access the "Phone" application from the main menu.
- Dial numbers directly or select contacts to initiate a call.
- Incoming calls will display on the screen, allowing you to answer or reject them.



Figure 4.1: The smartwatch displaying an incoming call, demonstrating its 4G calling capability.

4.4 Camera Functions

The watch is equipped with dual cameras: a 2MP side camera for general photography and a 0.3MP front camera for video calls.

- Open the "Camera" application to take photos or record videos.
- Switch between the front and side cameras as needed.
- Use the front camera for video communication through supported apps.

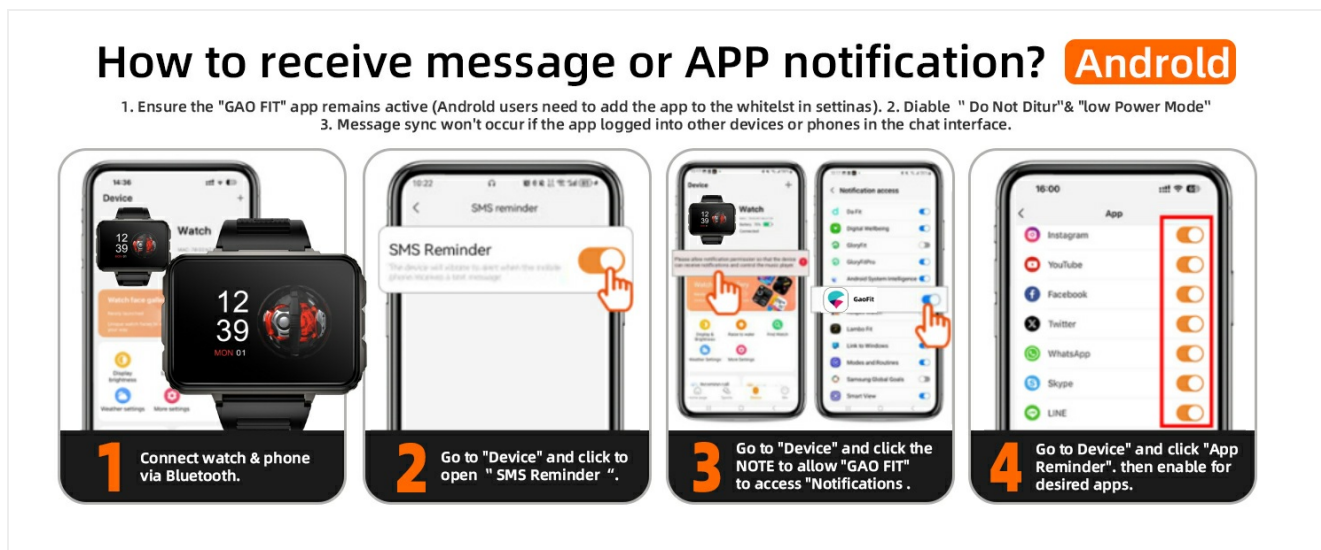


Figure 4.2: The smartwatch showcasing its dual camera system, suitable for both photos and video calls.

4.5 Media and Applications

The Android 10.7 operating system allows for smooth operation of various applications, including media playback, gaming, and social media.

- Access the app drawer to view and launch installed applications.
- The 2.4-inch screen with 640x480 resolution provides a clear visual experience for watching videos or browsing content.
- Connect Bluetooth headphones for audio playback.

Comprehensive upgrade of multiple core technologies
9 Reasons for Recommendation

- 2.4-Inch HD Large Screen**
Ultra clear eye protection big screen, watching TV shows and watching videos are enough to be enjoyable
- Dual System, Octa-core processor**
Android 10.7
- 640*480**
High definition resolution
- The entire network supports 5G cards**
4G/5G high-speed network, supporting three major telecom operators
- High definition dual cameras**
Front high-definition camera, video call
- Face recognition**
- Screenshot**
- Screen recording**
- 1500mAh large capacity battery**
No longer anxious about battery life, let companionship last longer
- Large memory free download**
4GB+64GB / 6GB+128GB
- Flashlight function**
Fearless of the dark night

Figure 4.3: The smartwatch displaying video content, highlighting its media consumption capabilities.

Heart rate, blood oxygen, and all day health protection
More accurate monitoring chip, seamless 24-hour monitoring, allowing you to constantly understand your health status

- Heart rate monitoring**
Newly upgraded dynamic heart rate algorithm, monitoring your heart rate 24/7. During exercise, the current state will be intelligently recognized based on the heart rate range, allowing you to better adjust during exercise.
- Blood oxygen**
By using optical sensors to detect blood oxygen saturation, we are always concerned about your health.
- Sleep monitoring**
Real time monitoring of sleep heart rate and sleep quality, analyzing sleep conditions: generating sleep reports for you, making your sleep status clear at a glance, helping you fall asleep soundly every night.
Sleep duration: 8H36M
Deep Sleep: 5H24M
Light Sleep: 3H05M
- Breathing training**
One rise and fall of the chest is one breath, and the human body takes in oxygen and exhales carbon dioxide through breathing to maintain normal lung function. The respiratory rate in adults is about 12-22 times per minute when they are calm.
Lung Health Breathing training

Figure 4.4: The smartwatch running a game, demonstrating the smooth performance of the Android 10.7 system.

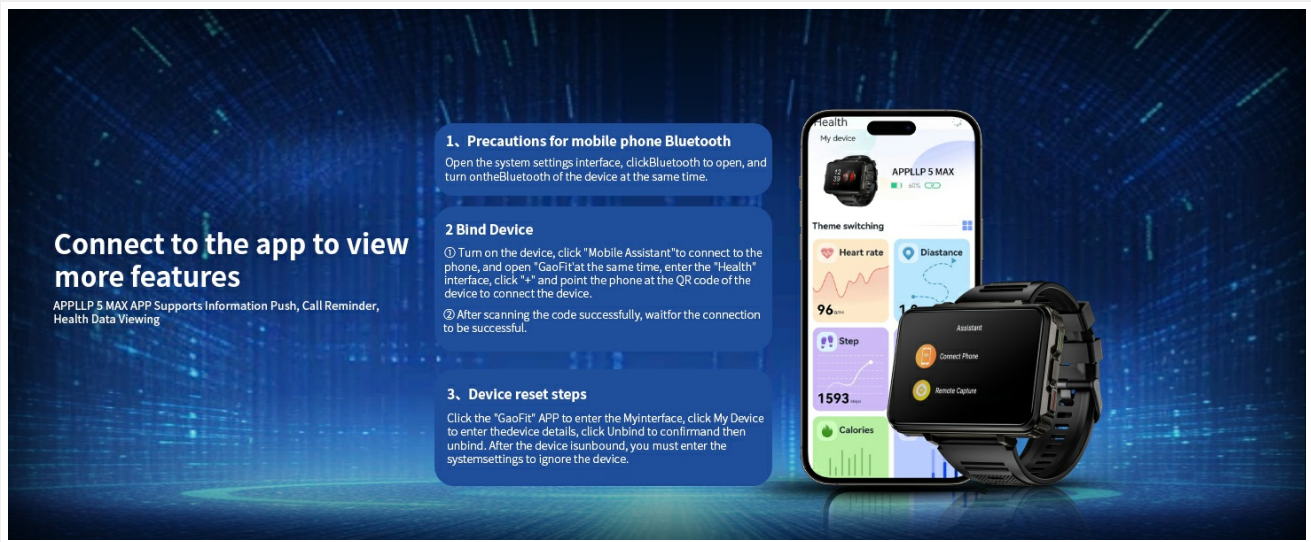


Figure 4.5: The smartwatch displaying a social media application, illustrating its instant messaging capabilities.

4.6 Flashlight Function

The smartwatch includes a built-in flashlight for convenience.

- Access the quick settings menu by swiping down from the top of the screen.
- Tap the flashlight icon to turn it on or off.

Your browser does not support the video tag.

Video 4.1: An unboxing and feature overview of the LOKMAT Smart Watch, demonstrating the flashlight function and user interface navigation.

5. HEALTH AND FITNESS FEATURES

5.1 Heart Rate, Blood Oxygen, and Sleep Monitoring

The smartwatch continuously monitors key health metrics to provide insights into your physical status.

- **Heart Rate:** Tracks your heart rate 24/7, helping you adjust exercise intensity.
- **Blood Oxygen:** Uses optical sensors to detect blood oxygen saturation levels.
- **Sleep Monitoring:** Analyzes sleep patterns and quality, providing reports to help improve sleep habits.
- **Breathing Training:** Guides you through breathing exercises for relaxation.

How to receive message or APP notification? ios

1. Ensure the "GAO FIT" app remains active (Android users need to add the app to the whitelst in settinas). 2. Diable "Do Not Ditur"& "low Power Mode"
3. Message sync won't occur if the app logged into other devices or phones in the chat interface.

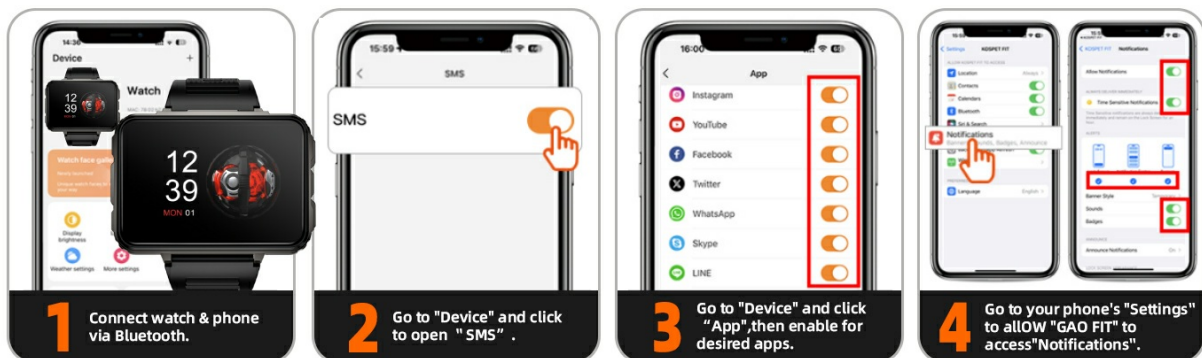


Figure 5.1: Overview of the smartwatch's health monitoring capabilities, including heart rate, blood oxygen, and sleep tracking.

5.2 GPS Positioning

Integrated GPS/Beidou/GLONASS/AGPS multi-mode positioning provides accurate location tracking for outdoor activities.

- Enables precise tracking of routes and distances during running, walking, and other outdoor sports.
- Assists in scientific exercise planning by providing location-based data.



Figure 5.2: The smartwatch displaying GPS tracking data during an outdoor activity.

5.3 Sport Modes

The watch offers various sport modes to accurately record exercise data.

- Select the appropriate sport mode before starting an activity to track metrics like steps, calories, and heart rate.
- Available modes include Outdoor Run, Outdoor Bike, Indoor Run, Play Basketball, Play Football, and more.

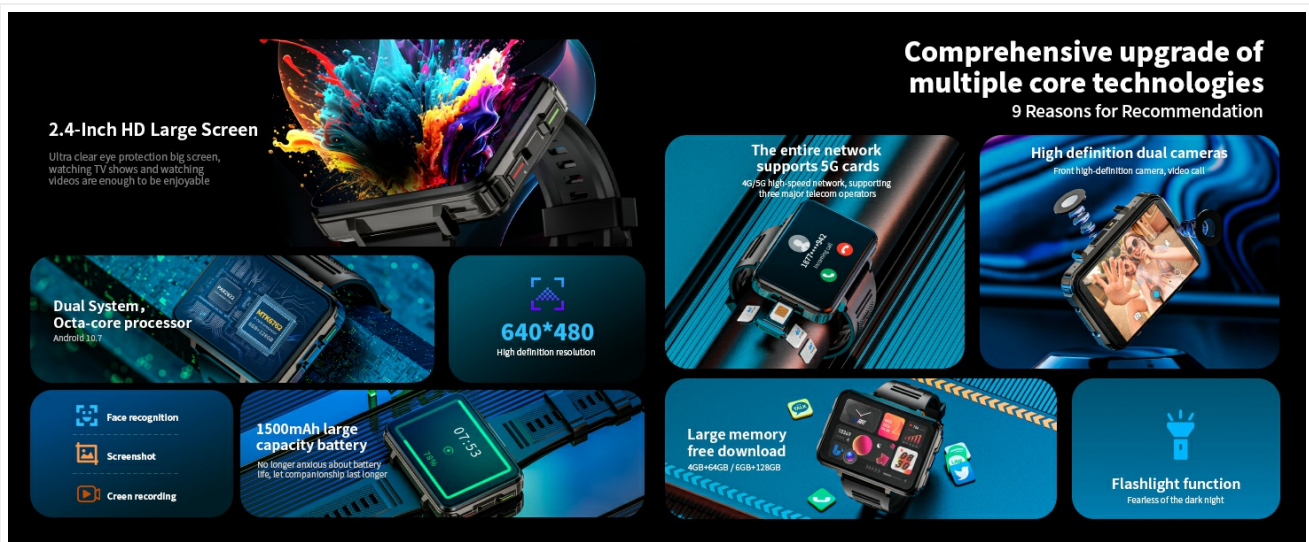


Figure 5.3: The smartwatch interface showing various exercise modes for tracking different physical activities.

6. SPECIFICATIONS

Feature	Detail
---------	--------

Feature	Detail
Operating System	Android 10.7
Memory Storage Capacity	128 GB
RAM Memory Installed	6 GB
Screen Size	2.4 Inches
Resolution	640 x 480
Battery Capacity	1500 mAh (Lithium Polymer)
Connectivity Technology	Wi-Fi, Bluetooth 5.0, 4G Cellular
GPS	Built-in GPS (GPS/Beidou/GLONASS/AGPS)
Cameras	2MP Side Camera, 0.3MP Front Camera
Health Metrics Measured	Heart Rate Monitor, Step Counter, Calorie Tracker
Water Resistance Level	Not Water Resistant
Band Material Type	Silicone
Case Material Type	Metal
Item Weight	4 Ounces

7. TROUBLESHOOTING

This section addresses common issues you might encounter.

7.1 SIM Card Not Recognized

- Ensure the SIM card is a standard Nano SIM and is inserted correctly.
- Check if the SIM card slot is clean and free from debris.
- Verify that the SIM card is active with your mobile carrier.
- Restart the watch after inserting the SIM card.

7.2 Connectivity Issues (Bluetooth/Wi-Fi)

- Ensure Bluetooth and Wi-Fi are enabled on both the watch and your connected device.
- Move closer to your Wi-Fi router or connected Bluetooth device.
- Restart both the watch and the connected device.
- If using the app, ensure it is running in the background and has necessary permissions.

7.3 Short Battery Life

- High-frequency use of features like 4G calling, GPS, and third-party apps will consume more battery.
- Reduce screen brightness and disable unnecessary background apps.
- Switch to sports bracelet mode for lighter monitoring during activities to conserve power.

7.4 Device Overheating

- Extended use of high-power applications or games can cause the device to warm up. This is normal.
- If the device becomes excessively hot, close demanding applications and allow it to cool down.

7.5 GPS Function Failure

- Ensure you are in an open outdoor area with a clear view of the sky for optimal GPS signal reception.
- Check if GPS is enabled in the watch settings.
- Restart the device to refresh GPS modules.

8. MAINTENANCE

Proper care ensures the longevity and performance of your smartwatch.

- **Cleaning:** Wipe the watch and band regularly with a soft, dry cloth. Avoid harsh chemicals.
- **Water Exposure:** This device is **not water resistant**. Avoid exposure to water, including swimming, showering, or heavy rain.
- **Storage:** Store the watch in a cool, dry place when not in use.
- **Charging:** Use only the provided charging cable.

9. WARRANTY INFORMATION

The LOKMAT 4G SIM Card Smart Watch comes with a Limited Manufacturer Warranty. Please refer to the warranty card included in your package for specific terms and conditions. Typically, this covers manufacturing defects for a period of 1 year from the date of purchase.

10. SUPPORT

For further assistance, technical support, or warranty claims, please contact LOKMAT customer service through their official channels. Refer to the contact information provided on the product packaging or the official LOKMAT website.