

LOKMAT 4GB RAM+64GB ROM

LOKMAT 4G SIM Card Smart Watch (4GB RAM+64GB ROM) User Manual

Model: 4GB RAM+64GB ROM

1. INTRODUCTION

This manual provides comprehensive instructions for the LOKMAT 4G SIM Card Smart Watch, Model 4GB RAM+64GB ROM. It covers device setup, operation, features, and troubleshooting to ensure optimal use of your smartwatch. Please read this manual carefully before using the device.

2. WHAT'S IN THE BOX

- LOKMAT Smart Watch
- Watch Band
- Charging Cable
- User Manual

Packing List Details



Figure 2.1: The image displays the LOKMAT Smart Watch, its packaging box, a charging cable, and the user manual, representing the complete contents of the product package.

3. PRODUCT OVERVIEW

The LOKMAT 4G SIM Card Smart Watch is an advanced wearable device featuring a 2.4-inch TFT screen with 640*480 resolution. It operates on an independent Android 10.7 system and supports a dual-system mode, allowing seamless switching between Android and a sports bracelet mode. Equipped with 4GB RAM and 64GB ROM, it facilitates smooth operation of third-party applications and games.

Key features include:

- **4G Full-Band Standalone Calling:** Supports Nano SIM for direct calls and stable communication across GSM/WCDMA/LTE/TD-SCDMA networks.
- **Dual-System Switching:** One-click switch between full Android functionality and a lightweight sports bracelet mode.
- **Dual HD Cameras:** A 2MP side camera for general photography and a 0.3MP front camera for video calls.
- **Multi-Mode Positioning:** Integrated GPS/Beidou/GLONASS/AGPS for accurate location tracking.
- **Sports and Health Monitoring:** Tracks heart rate, steps, and calories, providing data for exercise planning.
- **Long-Life Battery:** Built-in 1500mAh lithium polymer battery for extended use.
- **Connectivity:** Bluetooth 5.0 and 2.4GHz Wi-Fi for device pairing and internet access.



Figure 3.1: The LOKMAT Smart Watch showcasing its main display with various information widgets and an incoming call notification.



Figure 3.2: A visual summary of the smartwatch's core technologies and features, including its large screen, dual system, network support, cameras, battery, and memory.

4. SETUP

4.1. Charging the Device

Before initial use, fully charge the smartwatch using the provided magnetic charging cable. Connect the cable to a standard USB power adapter (5V/1A recommended). The built-in 1500mAh lithium polymer battery requires sufficient charge for proper functionality.

4.2. Initial Boot-Up

Press and hold the power button for approximately 2 seconds to turn on the device. The first boot-up may take longer as the system initializes applications. Please wait patiently. Once powered on, select your preferred language to access the main interface.

4.3. SIM Card Installation

The LOKMAT Smart Watch supports Nano SIM cards for standalone calling and data. Ensure the SIM card is a standard Nano SIM. Insert the Nano SIM card into the designated slot on the side of the watch. You may need to activate the VoLTE function for full calling capabilities, which can be done through your network provider.

5G full network for making and receiving calls, fast and smooth internet access to the end

Experience fast internet speed anytime and anywhere, support the three major domestic telecom operators, clear calls with no delay or lag in the screen



SIM Card Support, WIFI Support
GSM: 850 / 900 / 1800 / 1900
WCDMA: B1 / B2 / B5 / B8
TDS: B34 / B39
LTE-FDD: B1 / B2 / B3 / B5 / B7 / B8 / B12 / B17 / B20
LTE-TDD: B38 / B39 / B40 / B41(100MHz)

Figure 4.1: This image illustrates the Nano SIM card slot on the LOKMAT Smart Watch, along with examples of different SIM card sizes for comparison, highlighting the correct type for installation.

5. OPERATING INSTRUCTIONS

5.1. Basic Navigation

The smartwatch features a sensitive touch screen. Swipe left, right, up, or down to navigate through different screens and menus. Tap icons to open applications or select options. Press the power button to return to the home screen or lock/unlock the display.

5.2. Dual-System Switching

The watch supports both a full Android system and a simplified sports bracelet mode. You can switch between these modes with a single tap. The sports bracelet mode is optimized for lightweight monitoring during physical activities, conserving battery life.

5.3. Making and Receiving Calls

With a Nano SIM card installed and activated, the watch can make and receive calls independently. Use the

phone application on the watch to dial numbers or access contacts. The 4G full-band network support ensures stable communication.

It Is Both a Watch And a Mobile Phone. The Watch Head Is Detachable And Can Be Used As a Mini Mobile Phone

Comfortable strap with detachable strap for easy gaming and movie watching



Figure 5.1: The LOKMAT Smart Watch is shown detached from its strap, demonstrating its functionality as a compact, standalone mobile phone.

5.4. Using the Cameras

The smartwatch is equipped with two cameras: a 2MP side camera and a 0.3MP front camera. The side camera is suitable for capturing general scenes, while the front camera is designed for video calls. Access the camera application to take photos or record videos.

High definition dual cameras for real-time high-definition calling

Real time high-definition video call with a side camera of 200W, providing a clearer and wider field of view. Facial recognition, video calling, QR code payment, and photo recording of daily life are all within reach



Figure 5.2: This image highlights the dual camera system of the LOKMAT Smart Watch, showing a sample photo on its screen, indicating its capability for capturing images and video calls.

5.5. Health and Fitness Tracking

The watch integrates GPS/Beidou/GLONASS/AGPS for precise positioning during outdoor activities. It monitors various health metrics including heart rate, blood oxygen, steps, and calories. Use the dedicated health applications to view your data and track your progress.



Figure 5.3: This infographic illustrates the comprehensive health monitoring capabilities of the LOKMAT Smart Watch, including real-time heart rate, blood oxygen saturation, sleep tracking, and guided breathing exercises.

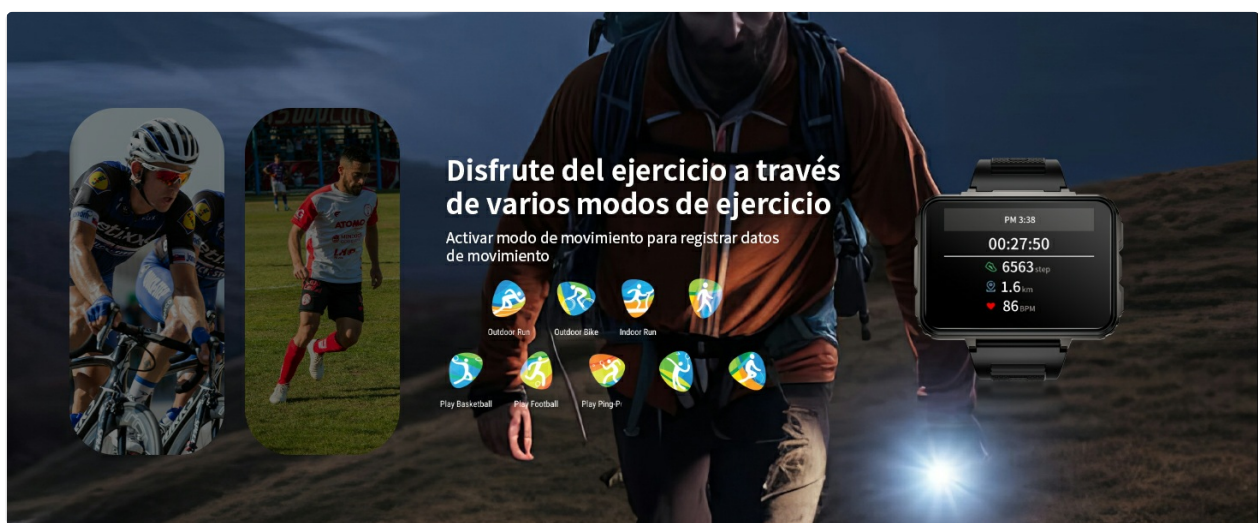


Figure 5.4: The image displays the LOKMAT Smart Watch interface showing various sports modes like outdoor running, cycling, and walking, alongside visuals of individuals engaging in these activities.

5.6. Connecting to the GAO FIT App

To unlock additional features and synchronize health data, connect your smartwatch to the 'GAO FIT' app on your smartphone. The app supports both Android and iOS devices.

1. Download the 'GAO FIT' app from Google Play Store or Apple App Store.
2. Ensure Bluetooth is enabled on your smartphone.
3. On the watch, navigate to 'Mobile Assistant' or similar setting to initiate pairing.
4. In the 'GAO FIT' app, go to 'Device' and select 'Add a new device'.
5. Follow the on-screen prompts to pair the watch.



Figure 5.5: This infographic provides a step-by-step guide on connecting the LOKMAT Smart Watch to the 'GAO FIT' app, covering Bluetooth settings, device binding, and resetting the device.

How to connect smart watch?

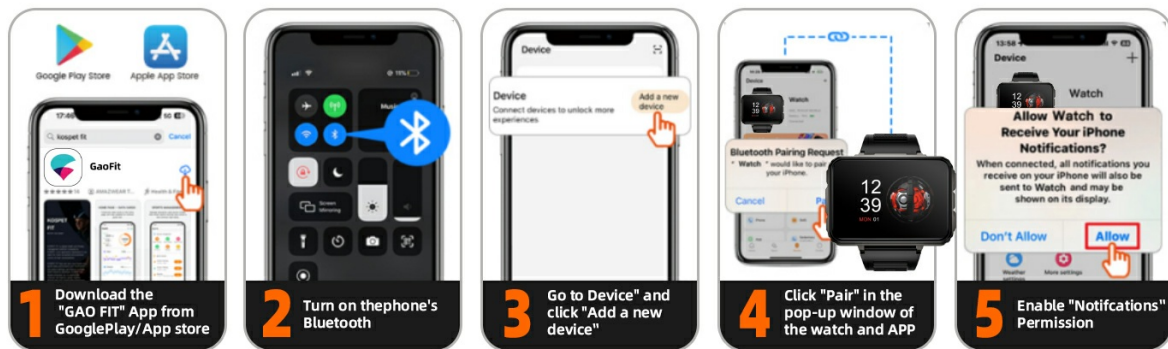


Figure 5.6: A visual guide demonstrating the process of connecting the LOKMAT Smart Watch to an iOS device via the 'GAO FIT' application, including enabling Bluetooth and granting permissions.

5.7. Receiving Notifications

To receive message and app notifications on your smartwatch, ensure the 'GAO FIT' app is running in the background on your phone and has the necessary permissions.

For iOS Devices:

1. Connect the watch and phone via Bluetooth.
2. In the 'GAO FIT' app, go to 'Device' and open 'SMS'.
3. Enable notifications for desired apps within the 'GAO FIT' app.
4. Go to your phone's 'Settings' > 'Notifications' and allow 'GAO FIT' to access notifications.

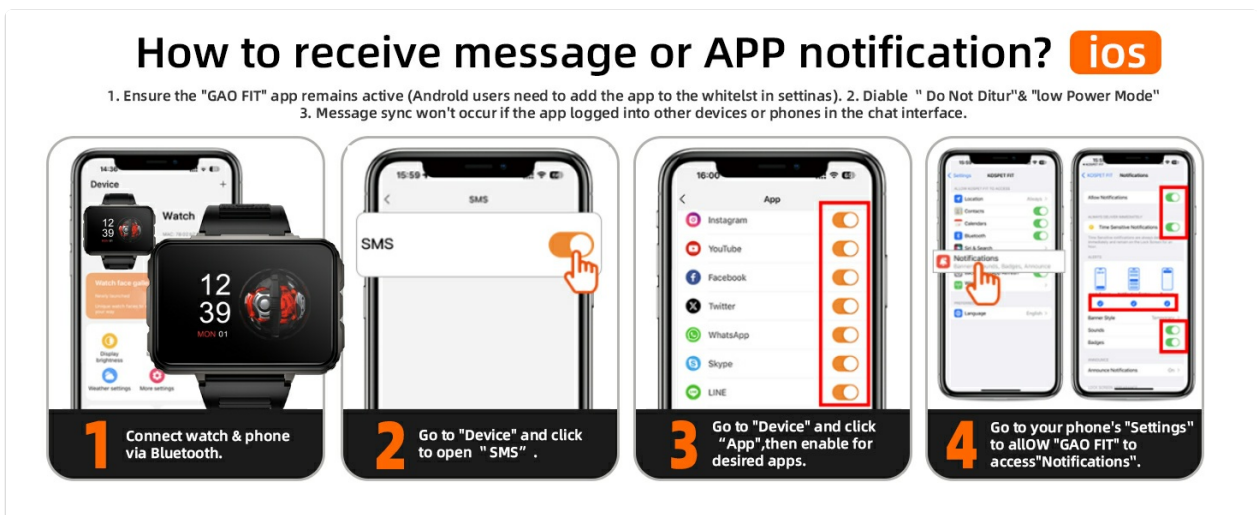


Figure 5.7: This image provides a detailed guide for iOS users on how to configure their LOKMAT Smart Watch to receive messages and app notifications through the 'GAO FIT' app.

For Android Devices:

1. Connect the watch and phone via Bluetooth.
2. In the 'GAO FIT' app, go to 'Device' and open 'SMS Reminder'.
3. Enable notifications for desired apps within the 'GAO FIT' app.
4. Go to your phone's 'Settings' > 'Notifications' and allow 'GAO FIT' to access notifications. Ensure the app is added to the whitelist in settings and 'Do Not Disturb'/'Low Power Mode' are disabled.

How to receive message or APP notification? **Android**

1. Ensure the "GAO FIT" app remains active (Android users need to add the app to the whitelst in settinas). 2. Diable "Do Not Ditur"& "low Power Mode"
3. Message sync won't occur if the app logged into other devices or phones in the chat interface.

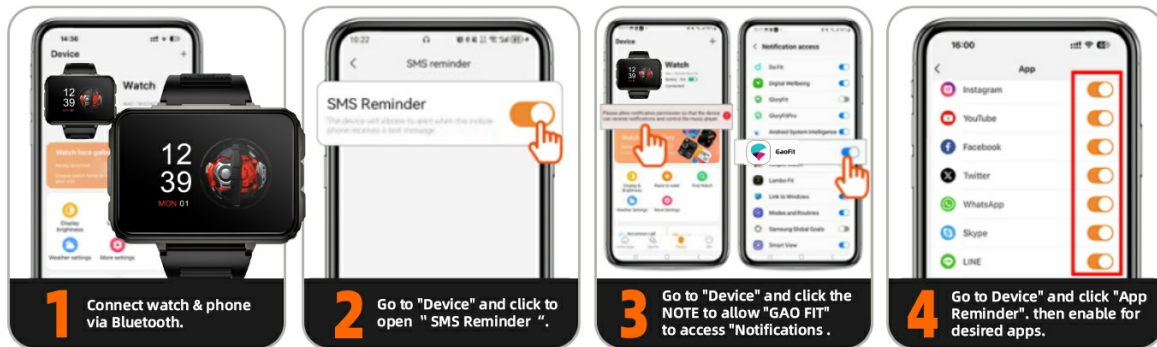


Figure 5.8: This image outlines the steps for Android users to enable message and application notifications on their LOKMAT Smart Watch via the 'GAO FIT' app, including important considerations for app settings.

6. MEDIA INTEGRATION

6.1. Product Images

2.4-inch HDlarge screen brings a unique and innovative visual experience

High definition and comfortable large screen, sensitive touch,
smooth operation experience, allowing you to play and imagine
the apps you need



Figure 6.1: The LOKMAT Smart Watch displaying a dynamic, high-definition image on its 2.4-inch screen, highlighting its visual clarity and immersive experience.

Newly upgraded eight core dual system

Upgraded high-speed multi-core processor with fast response, stable and fast transmission. Whether it's chatting on WeChat, browsing videos, running games, etc., it can be smooth and seamless, just like experiencing the thrill of a sports car racing.



Figure 6.2: An X-ray style view of the LOKMAT Smart Watch's internal components, emphasizing the MTK6762 8-core processor and PAR2822 low power chip, which power its dual-system functionality.

Instant messaging to stay in touch

Always online, never miss a message, supports multiple mainstream social media apps



Figure 6.3: The LOKMAT Smart Watch displaying a social media feed, illustrating its capability for instant messaging and staying connected.

Watch popular blockbusters anytime

640 * 480 high-definition resolution, narrow edge design with delicate and clear picture quality. Supports various popular playback software, allowing you to watch movies anytime, anywhere



Figure 6.4: The LOKMAT Smart Watch displaying a video streaming interface, demonstrating its ability to play popular media content on its screen.

Android 10.7 operating system - Play games smoothly without lagging

Equipped with the all-new Android 10.7 operating system, coupled with an eight core CPU and 6GB+128GB configuration, it runs at lightning speed, allowing you to enjoy mainstream mobile games without lagging, helping you dominate the battlefield



Figure 6.5: A user's hands interacting with the LOKMAT Smart Watch while playing a mobile game, showcasing the device's smooth performance for gaming applications.

6.2. Official Product Videos

Video 6.1: This video demonstrates the unboxing of the LOKMAT Smart Watch, showcasing its packaging, included accessories (charging cable, screen protector, SIM tools, user manual), and a quick overview of the watch's initial boot-up sequence and user interface navigation, including various apps and settings.

7. SPECIFICATIONS

Feature	Detail
Model Number	4GB RAM+64GB ROM
Display Size	2.4 Inches
Operating System	Android 10.7
RAM Memory Installed Size	4 GB

Feature	Detail
Memory Storage Capacity	64 GB
Battery Capacity	1500 Milliamp Hours (Lithium Polymer)
Connectivity Technology	Wi-Fi, Bluetooth
Wireless Communication Standard	Bluetooth
Special Features	Camera, GPS (Built-in)
Item Weight	4 Ounces
Package Dimensions	4.25 x 4.25 x 3.15 inches

8. TROUBLESHOOTING

If you encounter issues with your LOKMAT Smart Watch, please refer to the following common solutions:

- **The Phone Cannot Recognize The SIM Card:** Ensure the SIM card is correctly inserted and is a standard Nano SIM. Verify that the SIM card is active with your network provider and has the necessary services (e.g., VoLTE) enabled. Try restarting the watch.
- **Short Standby Time / Battery Problem:** Battery life can vary based on usage frequency and active features. High power consumption from third-party apps, games, or continuous network usage will reduce standby time. Ensure background apps are closed and adjust screen brightness.
- **Watch Gets Hot Easily:** High-performance applications or prolonged use can cause the watch to warm up. This is normal for devices with powerful processors. If it becomes excessively hot, reduce usage and allow it to cool down.
- **Bluetooth Calling Support:** The watch supports Bluetooth 5.0 for connecting headsets and peripherals. For standalone phone calls, a Nano SIM card is required.
- **GPS Function Failure:** Ensure the watch has a clear view of the sky for optimal GPS signal reception. GPS performance can be affected by indoor environments or dense urban areas.
- **App Connectivity Issues:** If the watch fails to connect to the 'GAO FIT' app, ensure Bluetooth is on for both devices, the app is updated, and all necessary permissions are granted on your smartphone. Try restarting both the watch and the phone.

9. SAFETY INFORMATION






Please observe the following safety guidelines to prevent damage to your device or injury to yourself:

- Do not expose the watch to extreme temperatures, direct sunlight, or excessive moisture.
- Avoid dropping or subjecting the watch to strong impacts.
- Use only the provided charging cable and compatible power adapters.
- Keep the device out of reach of children and pets.
- Consult a medical professional before starting any new exercise regimen or if you have health concerns, especially regarding heart rate monitoring.
- Do not attempt to disassemble or repair the device yourself. Contact customer support for assistance.

10. WARRANTY AND SUPPORT

For warranty information and customer support, please refer to the documentation included with your purchase or contact LOKMAT customer service directly. Keep your proof of purchase for warranty claims.

Related Documents - 4GB RAM+64GB ROM

	<p>LOKMAT ATTACK GT Smartwatch User Manual: Features, Setup, and Operation</p> <p>Comprehensive user manual for the LOKMAT ATTACK GT Smartwatch. Learn about its features including heart rate, blood pressure, and blood oxygen monitoring, sports modes, compass, and music control. Includes setup instructions, charging guide, troubleshooting tips, and important usage notes.</p>
	<p>LOKMAT ATTACK PRO Smartwatch User Manual and Guide</p> <p>Comprehensive guide to setting up, operating, and troubleshooting the LOKMAT ATTACK PRO smartwatch, covering features like fitness tracking, heart rate monitoring, calls, and app connectivity.</p>
	<p>ATTACK PRO Smart Watch User Manual and Operation Guide</p> <p>Comprehensive guide for the ATTACK PRO Smart Watch by LOKMAT, covering setup, operation, features like heart rate monitoring, blood pressure, sports tracking, music control, and troubleshooting common issues. Compatible with Android and iOS.</p>
	<p>LOKMAT PD7 MAX Smart Watch User Manual</p> <p>Comprehensive user manual for the LOKMAT PD7 MAX smart watch, covering setup, features, device connection, functions, and troubleshooting. Learn how to wear, charge, and use your smart watch effectively.</p>
	<p>Shenzhen LOKMAT Technology Co., Ltd. - Letter of Authorization and Model List for Smart Watch</p> <p>Letter of Authorization from Shenzhen LOKMAT Technology Co., Ltd. for LGAI Technological Center S.A. regarding FCC certification of Smart Watch models, including a comprehensive list of product variants.</p>

This document from Shenzhen LOKMAT Technology Co., Ltd. declares the product similarity across numerous smart watch models, including APPLLP, SKY, ATTACK, COMET, OCEAN, QUEEN, SEA, TIME, and ZEUS series. It confirms that all listed models share identical electrical and hardware design, including circuit design, PCB layout, RF module, antenna specifications, and components, as well as the same mechanical structure and materials. The only distinguishing factor is the model name.