

[Manuals.plus](#) /

> [Hodozzy](#) /

> Hodozzy 6G+128GB 8-Core Car Radio Instruction Manual for Skoda Octavia 2 MK2, Rapid, Yeti, Roomster, Superb, Spaceback

Hodozzy 6G+128GB 8-Core Car Radio

Hodozzy 6G+128GB 8-Core Car Radio Instruction Manual

For Skoda Octavia 2 MK2, Rapid, Yeti, Roomster, Superb, Spaceback

1. PRODUCT OVERVIEW

This manual provides comprehensive instructions for the Hodozzy 6G+128GB 8-Core Car Radio, designed to enhance your driving experience with advanced features and seamless integration. This unit features an 8-inch IPS touchscreen, Android operating system, 6GB RAM, 128GB storage, 8-core processor, wireless CarPlay, Android Auto, Mirror Link, GPS navigation, DSP audio processing, FM/RDS radio, and support for a rear view camera and steering wheel controls.



Figure 1: Hodozzy 8-inch Car Radio Main Unit

2. VEHICLE COMPATIBILITY

Before installation, it is crucial to confirm the compatibility of this car radio with your vehicle's original system configuration, year, and central control panel design. This unit is specifically designed for the following Skoda models:

- Skoda Octavia II/MK2 (2004 - 2013)
- Skoda Yeti (2009 - 2015)
- Skoda Rapid (2012 - 2015)
- Skoda Rapid Spaceback (2013 - 2015)
- Skoda Roomster (2008 - 2015)
- Skoda Superb (2008 - 2015)

Please compare your vehicle's dashboard with the images below to ensure proper fitment and avoid installation incompatibility. If you are unsure, consult with a professional installer or the manufacturer.



Figure 2: Compatible (left) and Incompatible (right) Dashboard Examples

3. SETUP AND INSTALLATION

The installation of this car radio requires technical knowledge and should ideally be performed by a qualified professional. Refer to the detailed wiring diagrams and instructions provided in the included user manual for specific steps. Ensure the vehicle's power is disconnected before beginning installation.

3.1. Packing List

Verify that all components are present in the package before starting the installation.



Figure 3: Included Components and Dimensions

The package typically includes:

- Car Radio Unit
- Power Cable
- RCA Cable
- GPS Antenna
- USB Cables (x2)
- User Manual
- Microphone
- Canbus Decoder (if applicable for your vehicle)

- Reverse Line
- Radio Antenna
- Rear Camera

3.2. Wiring Diagram

Follow the provided wiring diagram carefully for correct connections. Incorrect wiring can damage the unit or vehicle's electrical system.



Figure 4: Detailed Cable Connections

4. OPERATING INSTRUCTIONS

The Hodozzy car radio operates on an Android system, offering a user-friendly interface via its 8-inch IPS touchscreen.

4.1. Basic Operation

- **Power On/Off:** Press and hold the power button (usually labeled PWR) to turn the unit on or off. A short press typically mutes or unmutes the audio.
- **Volume Control:** Use the physical volume knob or the on-screen controls to adjust the audio level.
- **Main Menu:** Tap the 'Home' icon or swipe from the bottom/side of the screen to access the main application menu.
- **Navigation:** Use the touchscreen to tap, swipe, and pinch to navigate through menus and applications.

4.2. Connectivity Features

The unit offers multiple connectivity options for seamless smartphone integration and internet access.

- **Wireless CarPlay & Android Auto:** Connect your iPhone or Android smartphone wirelessly to access navigation, music, calls, and messages directly on the car radio display.
- **Mirror Link:** Project your smartphone's screen onto the car radio display for viewing content.
- **Bluetooth:** Pair your phone for hands-free calling and audio streaming.
- **WiFi:** Connect to a mobile hotspot or home WiFi network to access online services, download apps, and browse the internet.



Figure 5: Smartphone Integration via CarPlay, Android Auto, and Mirror Link



Figure 6: WiFi Connectivity and GPS Navigation Interface



Figure 7: Bluetooth and FM/RDS Radio Functions

4.3. Audio and Multimedia

- **DSP (Digital Sound Processor):** Utilize the integrated 32-band DSP to fine-tune audio output, customize sound profiles, and achieve optimal sound quality.
- **FM/RDS Radio:** Access local radio stations with clear reception and RDS (Radio Data System) information display.

- **Multimedia Playback:** Play audio and video files from USB drives or streaming apps.

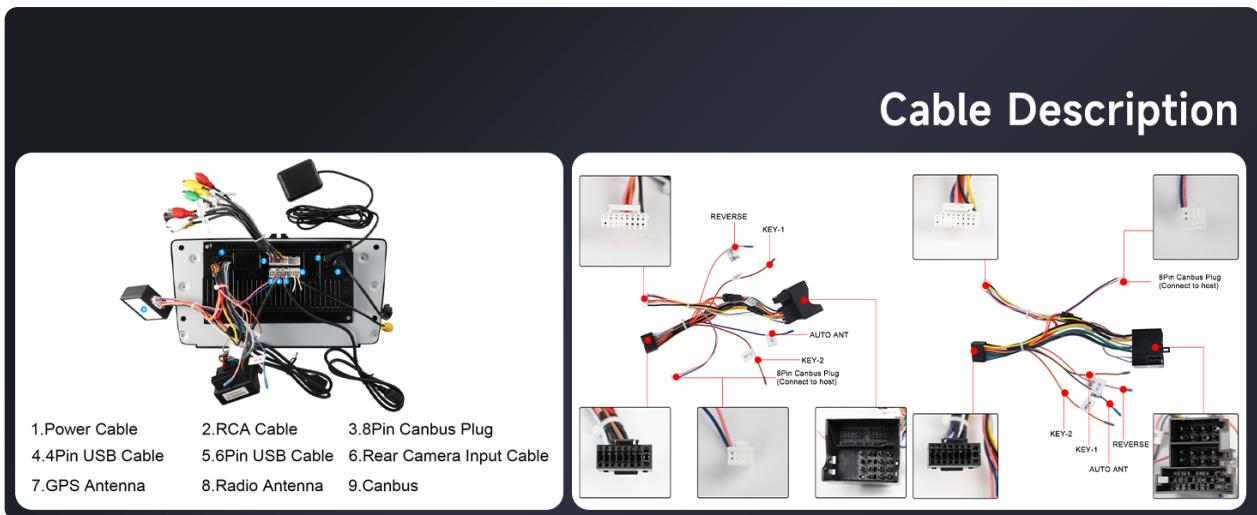


Figure 8: DSP and Equalizer Settings for Audio Customization

4.4. Display and Interface

- **IPS Touchscreen:** Enjoy vibrant colors and wide viewing angles on the 8-inch IPS display with 1024x600 resolution.
- **Split Screen:** Run two applications simultaneously, such as navigation and music, for enhanced multitasking.
- **UI Desktop Themes:** Personalize your interface with a selection of 59 unique desktop themes and 19 wallpapers.



Figure 9: Customizable Interface and Split Screen Functionality

4.5. Rear View Camera and Steering Wheel Control (SWC)

- **Rear View Camera:** The unit supports an AHD wide-angle rear view camera for safe parking and reversing. The display automatically switches to the camera feed when reverse gear is engaged.
- **Steering Wheel Control:** Integrate with your vehicle's existing steering wheel controls for convenient operation of audio, calls, and other functions without taking your hands off the wheel.



Figure 10: Rear View Camera and Steering Wheel Control Features

5. SPECIFICATIONS

Feature	Detail
Brand	Hodozzy
Manufacturer	Hodozzy
Package Dimensions	32 x 19 x 11 cm; 1.1 kg
Compatible Devices	Smartphone
Other Features	Android Auto, Apple CarPlay, Integrated Bluetooth, GPS Navigation
Included Components	Car radio unit
Number of Products	1
Batteries Included	No
Batteries Required	No
Connector Type	Bluetooth, HDMI, USB, WiFi
Product Weight	1.1 kg
Software Updates Guaranteed Until	Unknown
ASIN	B0FS14ZWBC
Available on Amazon.es Since	22 September 2025
Country/Region of Origin	China
Connectivity Technology	Bluetooth, HDMI, USB, WiFi
Controller Type	Android
Special Feature	Android Auto, Apple CarPlay, Integrated Bluetooth, GPS Navigation

6. MAINTENANCE

To ensure the longevity and optimal performance of your Hodozzy car radio, follow these maintenance guidelines:

- **Cleaning:** Use a soft, dry cloth to clean the screen and exterior. Avoid abrasive cleaners or solvents that could damage the finish or screen coating.
- **Software Updates:** Periodically check for available software updates to ensure the system runs efficiently and has the latest features and security patches.
- **Temperature:** Avoid exposing the unit to extreme temperatures, both hot and cold, as this can affect performance and lifespan.
- **Power Supply:** Ensure a stable power supply to prevent electrical damage.

7. TROUBLESHOOTING

If you encounter issues with your car radio, refer to the following common troubleshooting steps:

- **No Power:** Check all power connections and fuses. Ensure the vehicle's ignition is on.
- **No Sound:** Verify volume settings, check speaker connections, and ensure the mute function is not active.
- **Touchscreen Unresponsive:** Try restarting the unit. If the issue persists, a factory reset might be necessary (refer to the full user manual for instructions).
- **Bluetooth/WiFi Connection Issues:** Ensure the device is within range, Bluetooth/WiFi is enabled on both devices, and try re-pairing or reconnecting.
- **GPS Signal Loss:** Ensure the GPS antenna is properly installed and has a clear view of the sky.
- **CarPlay/Android Auto Not Connecting:** Check USB cable connection (if wired), ensure Bluetooth is on, and verify permissions on your smartphone.

For more complex issues, consult the detailed troubleshooting section in the complete user manual or contact customer support.

8. WARRANTY AND SUPPORT

Hodozzy products are designed for reliability and performance. For specific warranty details, please refer to the warranty card included with your product or contact Hodozzy customer support. In general, products purchased from authorized sellers typically come with a return policy (e.g., 30 days from purchase) for defects or dissatisfaction.

For technical assistance, product inquiries, or warranty claims, please contact the Hodozzy Store or your point of purchase. Ensure you have your product model number and purchase details ready when contacting support.