

## NEEWER PA148E

# NEEWER PA148E Quick Release Side Handle with Bluetooth Shutter User Manual

Model: PA148E | Brand: NEEWER

## INTRODUCTION

The NEEWER PA148E Quick Release Side Handle is designed to enhance your mobile photography and videography experience. It features a quick-release mechanism for easy attachment to compatible NEEWER phone cages, an integrated Bluetooth shutter for remote control, a cold shoe mount for accessories, and 360° rotation with vertical adjustment for optimal positioning. This manual provides detailed instructions for setup, operation, maintenance, and troubleshooting.

## SETUP INSTRUCTIONS

### 1. Attaching to a Phone Cage

The PA148E side handle is compatible with NEEWER phone cages featuring quick-release mounting slots, such as PA073 (for iPhone 16 Pro), PA074 (for iPhone 16 Pro Max), and PA082 (for S25 Ultra).

1. Locate the quick-release mounting slot on your NEEWER phone cage.
2. Align the quick-release clamp of the side handle with the slot.
3. Slide the handle into the slot until it clicks into place.
4. Tighten the locking knob on the clamp to secure the handle firmly to the cage.

# Quick Release Clamp

Instantly attaches to any NEEWER phone cage with the dedicated mounting slots.

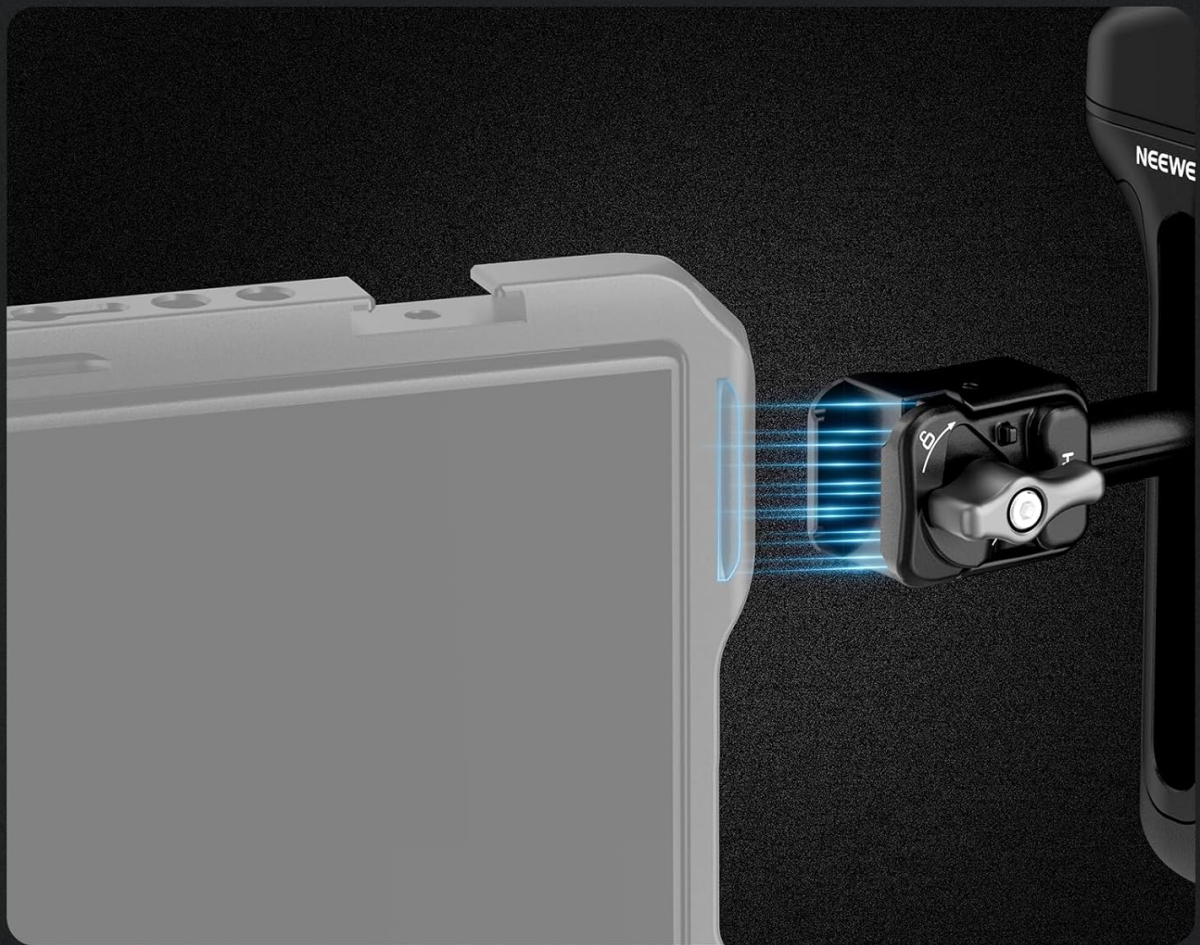


Figure 1: Quick Release Clamp attachment to a phone cage.

## For NEEWER Phone Cages with Quick Release Slots



PA082  
(For S25 Ultra)



PA144  
(For 17 Pro Max)



PA143  
(For 17 Pro)

Note: Phone cages not included.

Figure 2: Compatibility with NEEWER phone cages (PA082, PA144, PA143).

## 2. Bluetooth Pairing

The side handle features a Bluetooth shutter for remote control of your phone's camera.

1. Ensure your phone's Bluetooth is enabled.
2. Long press the shutter button on the side handle for 3 seconds to power it on and enter pairing mode. The indicator light will flash.
3. On your phone, search for available Bluetooth devices and select "NEEWER-PA148E" (or similar) to pair.
4. Once paired, the indicator light will turn solid (blue for Blackmagic Camera app, red for native camera app).

## OPERATING INSTRUCTIONS

### 1. Bluetooth Shutter Functions

# Bluetooth Shutter Release



Figure 3: Bluetooth Shutter Release button.

- **Power On/Off:** Long press the button for 3 seconds.
- **Take a Picture:** Short press the button.
- **Record Video:** Short press the button when in video mode.

## 2. Rotary Dial Functions

The rotary dial provides additional control over your camera functions.

- **Rotate:** Adjusts zoom in both native camera apps and the Blackmagic Camera app.
- **Short Press:** Enables autofocus or exposure lock (Blackmagic Camera app only).
- **Long Press (3 seconds):** Clears Bluetooth pairing.
- **Double Press:** Opens the native camera app.
- **Double Press (in native camera app):** Flips between front and rear cameras.

## 3. Cold Shoe Mount

The integrated cold shoe mount allows you to attach external accessories such as microphones or LED video lights.

- The cold shoe features retractable anti-off pins to prevent accessories from accidentally detaching.
- To attach an accessory, slide it into the cold shoe mount.
- **Note:** Remove the Bluetooth shutter module from the cold shoe before attaching other accessories if the module is placed there.



Figure 4: Cold Shoe Mount with Anti-Off Pin, compatible with various accessories.

#### 4. Swivel and Vertical Balancing

The handle offers flexibility for various shooting angles.

- The handle can rotate 360°, allowing it to be used as a side handle or a top handle for low-angle shots.
- A 2.2"/55mm vertical adjustment range helps achieve optimal balance for your setup.
- The nonslip silicone grip ensures stability during use.

## Swivel & Vertical Balancing

360° rotatable phone handle grip doubles as a top handle for low angle shots. 2.2"/55mm vertical adjustment allows optimal balancing. Nonslip silicone grip for stability



Figure 5: Swivel and Vertical Balancing in action.

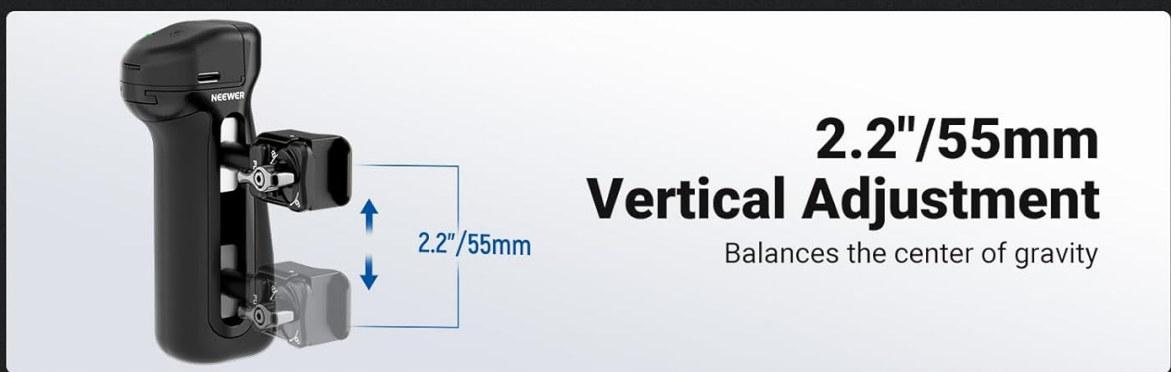


Figure 6: Stable grip, built-in hex key for adjustments, and vertical adjustment range.

## 5. Firmware Updates

The device supports OTA (Over-The-Air) firmware updates. Refer to the official NEEWER website or app for instructions on how to perform updates.

## 6. Official Product Video

Your browser does not support the video tag.

**Video 1:** An official overview of the NEEWER Quick Release Side Handle, demonstrating its features and use cases.

## MAINTENANCE

- Keep the device clean by wiping it with a soft, dry cloth.
- Avoid exposing the handle to extreme temperatures, moisture, or corrosive substances.
- Store the handle in a dry, dust-free environment when not in use.

- Periodically check the locking knob and quick-release mechanism for secure operation.

## TROUBLESHOOTING

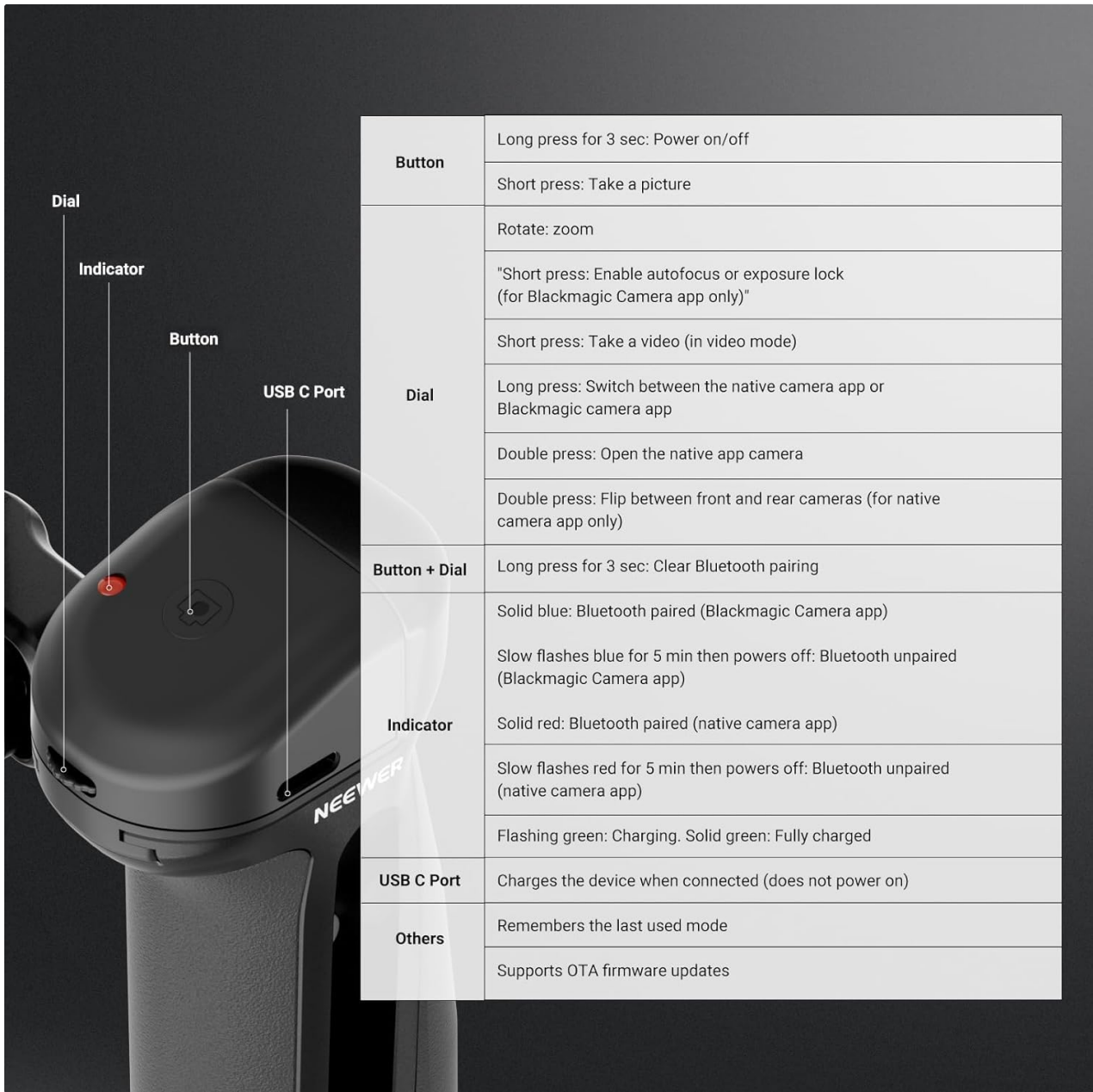


Figure 7: Control Diagram for troubleshooting.

Problem	Possible Cause	Solution
Bluetooth not pairing	Handle not in pairing mode; Phone Bluetooth off; Interference; Already paired to another device.	Ensure handle is powered on and indicator is flashing. Check phone's Bluetooth settings. Move closer to the phone. Long press the button for 3 seconds to clear previous pairings.
Shutter button not working	Not paired; Low battery; App not recognizing input.	Verify Bluetooth pairing (solid indicator light). Charge the device via USB-C. Ensure the camera app is active and in photo/video mode.

<b>Problem</b>	<b>Possible Cause</b>	<b>Solution</b>
Rotary dial zoom/focus not working	App incompatibility; Incorrect app settings.	Note that native camera apps typically only support zoom. For focus adjustment, use the Blackmagic Camera app. Check app settings for external control options. Some phone models or OS versions may have limited compatibility.
Handle feels loose on cage	Locking knob not tightened; Incorrectly seated.	Ensure the handle is fully inserted into the quick-release slot and the locking knob is securely tightened.
Cold shoe accessory falling off	Anti-off pins not engaged; Accessory not fully inserted.	Ensure the accessory is fully slid into the cold shoe mount so the anti-off pins can engage.

## **SPECIFICATIONS**

# Package Contents

1 x Quick Release Side Handle



## Specifications

Item Type: Side Handle  
Compatibility with: NEEWER Phone Cages  
Application: Photography/Videography  
Main Features: Cold Shoe/360° Swivel  
Mounting Points: Quick Release Clamp  
Main Material: Aluminum Alloy  
Color: Black  
Dimensions: 4.2"x3"x1.8"/107x75x45mm  
Weight: 5.6oz/160g

Figure 8: Package Contents and Specifications.

Feature	Detail
Item Type	Side Handle
Compatibility	NEEWER Phone Cages (e.g., PA073, PA074, PA082)
Application	Photography, Videography
Main Features	Cold Shoe, 360° Swivel, Bluetooth Shutter
Mounting Points	Quick Release Clamp
Main Material	Aluminum Alloy
Color	Black
Dimensions	4.2" x 3" x 1.8" / 107 x 75 x 45mm
Weight	5.6 oz / 160g

Feature	Detail
Built-In Media	1 x Side Handle
Video Capture Resolution	4K (3840 x 2160) (Phone dependent)
Water Resistance Level	Not Water Resistant

## WARRANTY INFORMATION

This NEEWER PA148E Quick Release Side Handle comes with a **1 Year Manufacturer Warranty**. Please retain your proof of purchase for warranty claims. For specific terms and conditions, refer to the warranty documentation included with your product or visit the official NEEWER website.

## CUSTOMER SUPPORT

If you encounter any issues not covered in this manual or require further assistance, please contact NEEWER customer support through their official website or the retailer where you purchased the product. Provide your product model (PA148E) and a detailed description of the issue for efficient support.