

NBD S210

NBD S210 8K 64MP Digital Camera User Manual

Model: S210

1. INTRODUCTION

The NBD S210 is an advanced 8K 64MP digital camera designed for photography and vlogging enthusiasts. It features a 16X optical zoom, a 180° flip screen, and various connectivity options, making it suitable for capturing high-quality photos and videos in diverse environments.

Your browser does not support the video tag.

Video Description: A brief overview of the NBD S210 digital camera, showcasing its design, key features like the lens, mode dial, and ports, and its compact form factor.

2. UNBOXING AND INITIAL SETUP

This section guides you through unboxing your NBD S210 camera and preparing it for first use.

2.1 What's in the Box

Your NBD S210 camera package includes the following items:

- NBD S210 Camera Body
- 58mm Lens
- UV Lens Filter
- Lens Shade & Lens Hood
- Microphone
- Desk Tripod
- 2 Lithium-Ion Batteries
- Battery Charger
- Camera Strap

- Protective Pouch
- 64GB TF Card
- USB Cable



Image Description: A complete view of the NBD S210 digital camera kit, including the camera body with lens, two batteries, charger, microphone, desk tripod, UV filter, lens hood, 64GB memory card, and cables, all neatly arranged.

2.2 Battery Installation and Charging

1. Insert the included Lithium-Ion batteries into the battery charger.
2. Connect the charger to a power source using the USB cable. The indicator light will show charging status.
3. Once fully charged, insert a battery into the camera's battery compartment, ensuring correct orientation.

2.3 Memory Card Insertion

1. Locate the memory card slot on the camera.
2. Insert the 64GB TF card (MicroSD card) into the slot until it clicks into place. Ensure the card is oriented correctly.

2.4 Lens and Lens Hood Attachment

1. Align the 58mm lens with the camera's lens mount. Twist gently until it locks into position.
2. Attach the lens hood to the front of the lens by aligning the markers and twisting until secure. The lens hood helps reduce glare and protects the lens.

2.5 Attaching Accessories (Tripod, Microphone)

- **Tripod:** Screw the desk tripod into the 1/4-inch tripod interface located at the bottom of the camera.
- **Microphone:** Connect the external microphone to the 3.5mm audio jack on the camera.

Your browser does not support the video tag.

Video Description: A detailed demonstration of the NBD S210 camera, including unboxing accessories like the tripod, microphone, and lens hood, and showing how to attach the lens hood to the camera.

3. CAMERA COMPONENTS AND CONTROLS

Familiarize yourself with the camera's physical components and controls for optimal use.

3.1 Mode Dial

The mode dial on top of the camera allows you to quickly switch between various shooting modes:

- **P (Program Auto):** Semi-automatic mode where the camera sets aperture and shutter speed.
- **S (Shutter Priority):** You set the shutter speed, and the camera adjusts the aperture. Ideal for capturing fast-moving subjects.
- **A (Aperture Priority):** You set the aperture, and the camera adjusts the shutter speed. Useful for controlling depth of field.
- **M (Manual):** Full control over both aperture and shutter speed.
- **Video Mode:** Dedicated mode for recording video.
- **Night Mode:** Optimized for low-light photography.
- **Macro Mode:** For close-up shots of small subjects.
- **Auto Mode:** The camera automatically selects the best settings for the scene.

Getting Started Quickly

9 shooting modes for quick switching

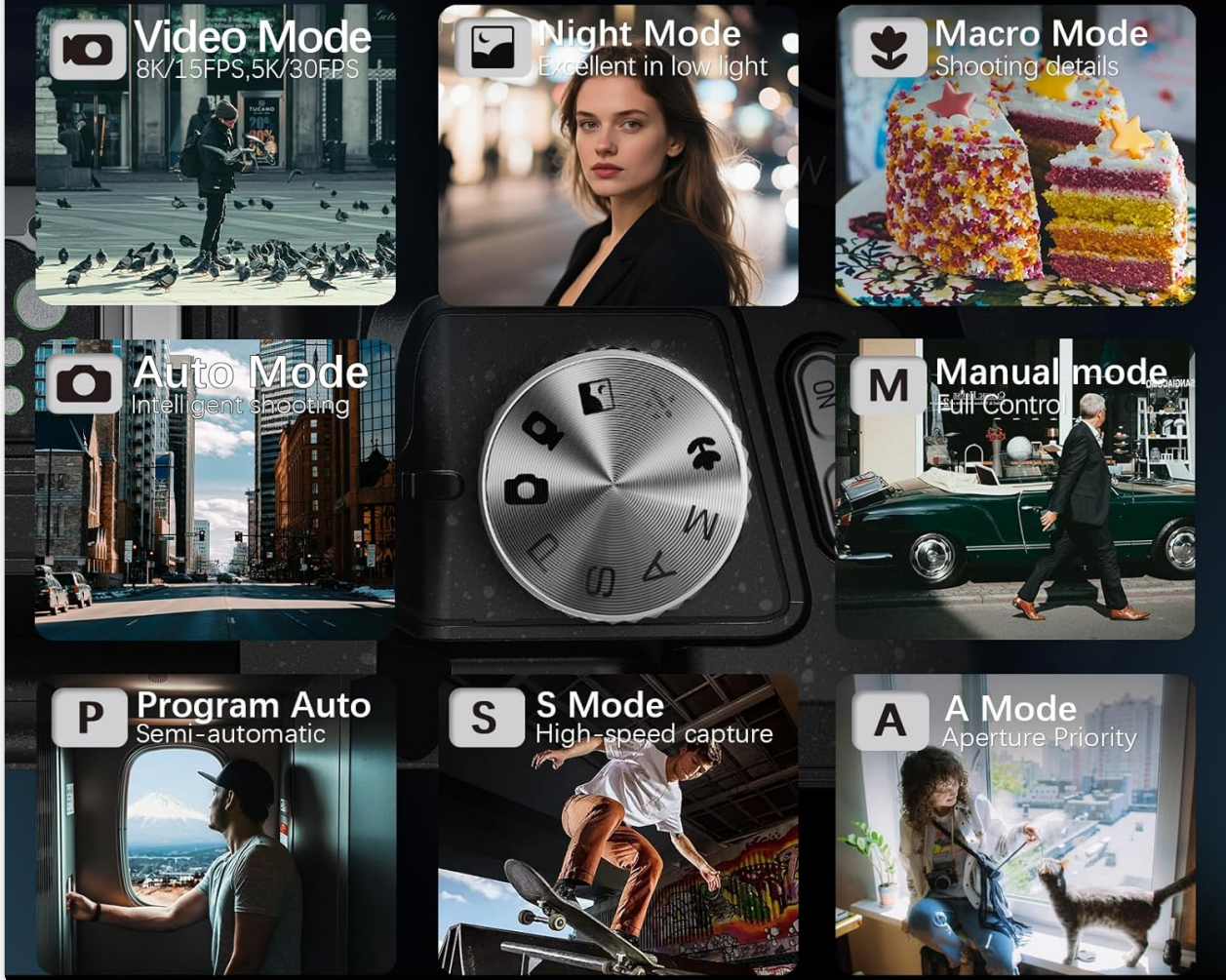


Image Description: A close-up view of the NBD S210 camera's mode dial, clearly showing options for Video, Night, Macro, Auto, Manual, Program Auto (P), Shutter Priority (S), and Aperture Priority (A) modes.

3.2 Ports and Interfaces

The NBD S210 offers multiple interfaces for enhanced functionality:

- **Micro HDMI Interface:** For connecting to external displays.
- **USB-C Interface:** For rapid charging and data transmission.
- **3.5mm Microphone Interface:** For connecting an external microphone.
- **Cold Shoe Interface:** To accommodate a fill light, phone clip, or other accessories.
- **1/4-inch Tripod Interface:** For mounting the camera on a tripod.

Multiple interfaces & strong expandability

5-Port interface

- Micro HDMI interface
- Type-C interface
- 3.5mm microphone interface
- Cold shoe interface
- 1/4 tripod interface



Image Description: A detailed view of the NBD S210 camera's side, highlighting its various ports including Micro HDMI, USB-C, and 3.5mm microphone jack, along with a cold shoe mount and tripod interface, demonstrating its expandability.

4. BASIC OPERATION

4.1 Power On/Off

Press the 'ON/OFF' button to power the camera on or off.

4.2 Taking Photos

Select your desired shooting mode using the mode dial. Frame your shot using the flip screen, then press the shutter button halfway to focus and fully to capture the image.

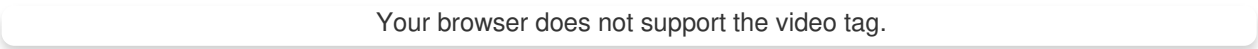
4.3 Recording Videos

Switch to Video Mode using the mode dial. Press the dedicated record button to start and stop video

recording.

4.4 Using the 180° Flip Screen

The 180° flip screen allows for versatile shooting angles, especially useful for vlogging and self-portraits. Simply flip the screen to your desired position.



Video Description: This segment demonstrates the camera's 180° flip screen in action, showing a user recording a vlog, highlighting its utility for self-recording and framing shots.

5. ADVANCED FEATURES AND MODES

5.1 High-Resolution Imaging: 8K Video & 64MP Photos

The NBD S210 captures stunning visuals with its 8K video recording capability at 15 frames per second (fps) or 5K at 30fps, alongside 64-megapixel still images for exceptional detail.

Up to 8K Video Quality

Possessing more intricate visual details



Image Description: A visual comparison demonstrating the superior detail of 8K video at 15fps compared to 2K video, highlighting the intricate visual details captured by the NBD S210 camera.

64-megapixel clarity revealing microscopic details

Pixel-perfect clarity



Image Description: An example showcasing the pixel-perfect clarity and microscopic details captured by the NBD S210's 64-megapixel sensor, with an image of a city street and tram.

5.2 16X Optical Zoom

The camera features a 16X optical zoom, allowing you to get close to your subject without compromising image quality. Unlike digital zoom, optical zoom retains crisp details and avoids pixelation.

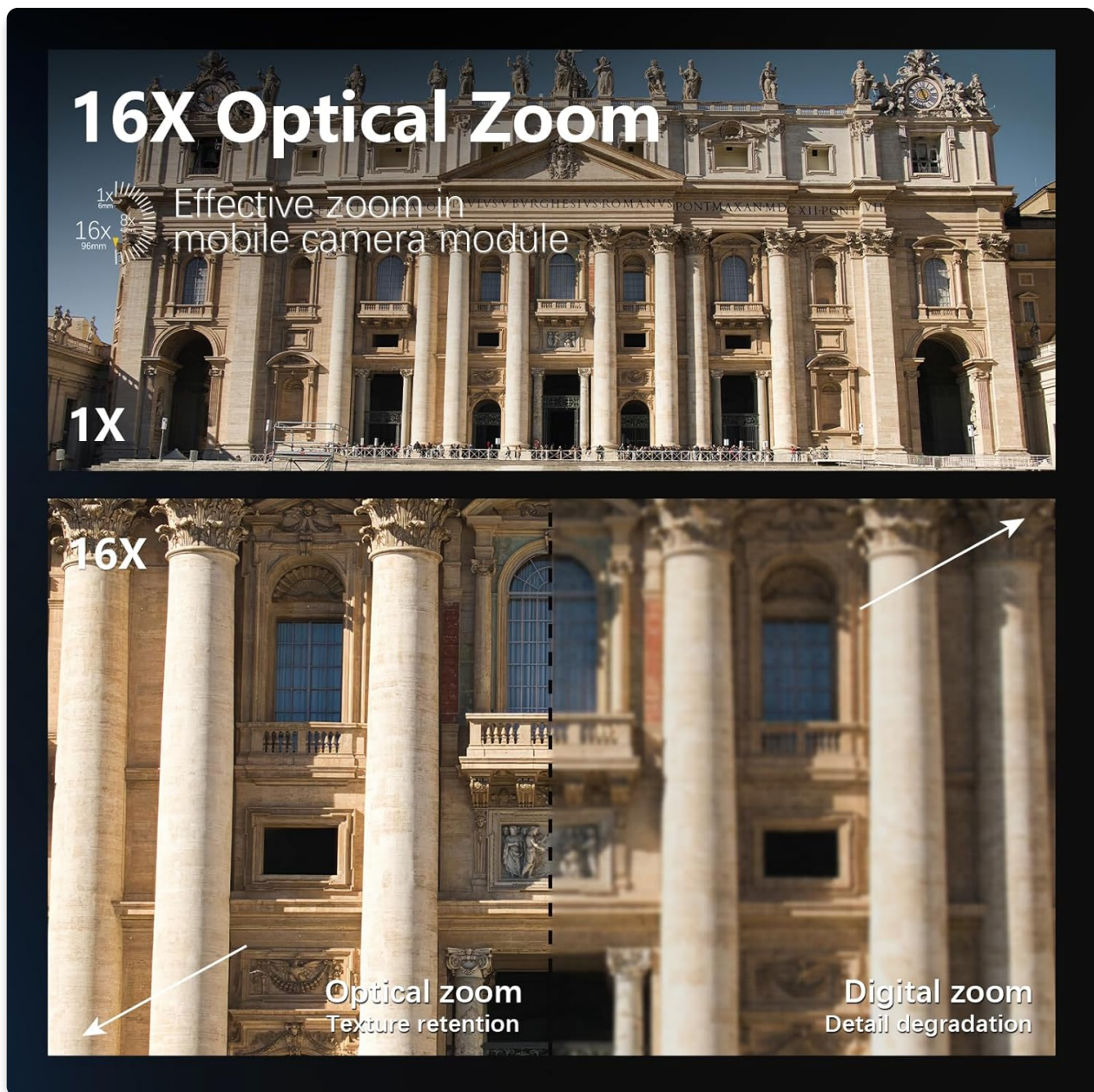


Image Description: A side-by-side comparison illustrating the difference between 1X and 16X optical zoom, demonstrating how the NBD S210 camera maintains texture and detail at maximum zoom, unlike digital zoom which degrades quality.

5.3 Auto-Focus and Anti-Shake

The NBD S210 is equipped with an efficient auto-focus system to ensure your subjects are sharp. The anti-shake feature helps to minimize blur from camera movement, resulting in clearer photos and smoother videos.

Your browser does not support the video tag.

Video Description: This segment highlights the camera's auto-focus capabilities, showing a user focusing on a distant landscape, and later demonstrates the effectiveness of its image stabilization by comparing 'before' and 'after' footage.

5.4 High-Speed Shooting

Capture fast-paced action with the camera's high-speed shooting capabilities, ensuring you don't miss exciting moments.

High-Speed Shooting

Quickly capture
exciting moments

1/500s

70mm F3.2 ISO800



1/2000s

70mm F3.0 ISO1000



Image Description: Two examples of high-speed photography, showing a skier captured at 1/500s and another at 1/2000s, demonstrating the camera's ability to quickly freeze action.

5.5 Macro Photography

Utilize the Macro Mode to capture intricate details of small subjects. The camera allows for a minimum focusing distance of approximately 5cm.

Your browser does not support the video tag.

Video Description: This segment demonstrates the camera's macro mode, showing close-up shots of flowers and highlighting the ability to capture tiny details.

5.6 Low-Light Performance with Built-in Flash

The NBD S210 performs well in low-light conditions, aided by its built-in flash. This ensures your shots remain clear and vibrant, regardless of the lighting environment.



Image Description: A visual representation of the NBD S210's low-light capabilities, showing a comparison of images taken in various low-light settings, including with and without flash, demonstrating enhanced clarity.

Your browser does not support the video tag.

Video Description: This segment illustrates the camera's low-light shooting capabilities, showing how the built-in flash and wide frequency operator contribute to clear shots in dim environments.

6. CONNECTIVITY AND DATA TRANSFER

6.1 Wi-Fi App Connection

Connect your NBD S210 camera to your smartphone via Wi-Fi using the dedicated app. This allows for remote control of the camera and instant transfer of photos and videos to your phone for quick sharing on social media.

Swift Image Transfer

Share your photos in
real time on social media



Image Description: The NBD S210 camera displaying a Wi-Fi connection screen, with images wirelessly transferring to a smartphone, illustrating the swift image transfer feature for social media sharing.

Your browser does not support the video tag.

Video Description: This segment demonstrates the camera's Wi-Fi connectivity, showing how to instantly transfer photos to a smartphone, eliminating the need for a computer for social media posting.

6.2 External Connectivity

The camera's various ports allow for connection to other devices:

- **USB:** Connect to a computer for data transfer or charging.
- **Micro HDMI:** Output video to an external monitor or TV.
- **3.5mm Microphone Jack:** For improved audio quality with an external microphone.

7. MAINTENANCE AND CARE

Proper maintenance ensures the longevity and optimal performance of your NBD S210 camera.

7.1 Cleaning

- **Lens:** Use a soft, lint-free cloth and specialized lens cleaning solution. Avoid touching the lens surface with your fingers.
- **Screen:** Wipe the flip screen with a microfiber cloth.
- **Camera Body:** Use a dry, soft cloth to clean the camera body. Avoid harsh chemicals.

7.2 Battery Care

- Always use the provided charger and batteries.
- Avoid fully discharging batteries frequently.
- Store batteries in a cool, dry place when not in use.

7.3 Storage

When not in use, store the camera in its protective pouch, away from direct sunlight, extreme temperatures, and high humidity.

8. TROUBLESHOOTING

If you encounter issues with your NBD S210 camera, refer to the following common problems and solutions:

- **Camera not powering on:**
Ensure the battery is fully charged and correctly inserted. Try using the second included battery.
- **Blurry images:**
Check that the lens is clean. Ensure the camera is in focus (auto-focus is engaged). Verify that the anti-shake feature is enabled. Adjust shutter speed in 'S' or 'M' mode for faster action.
- **Wi-Fi connectivity issues:**
Ensure Wi-Fi is enabled on both the camera and your smartphone. Restart both devices. Re-establish the connection through the camera's Wi-Fi settings and the app.
- **Memory card errors:**
Ensure the memory card is inserted correctly. If errors persist, try reformatting the card (this will erase all data). If the issue continues, try a different compatible memory card.
- **No audio during video recording:**
Check if the external microphone is properly connected and functioning. Ensure microphone settings are enabled in the camera menu.

9. TECHNICAL SPECIFICATIONS

| Feature | Specification |
|---------|---------------|
| Brand | NBD |

| Feature | Specification |
|----------------------------|---------------------------------------|
| Model Name | S210 |
| Photo Sensor Technology | CMOS |
| Effective Still Resolution | 64 MP |
| Video Resolution | 8K (15 fps), 5K (30 fps) |
| Optical Zoom | 16 x |
| Image Stabilization | Anti-shake |
| Lens Type | Standard Zoom (58mm lens) |
| Display Type | LCD (2.8 Inches, 180° Flip Screen) |
| Focus Type | Auto Focus (AF-A) |
| ISO Range | 100-6400 |
| Camera Flash | Built-In (Automatic Flash Modes) |
| Connectivity Technology | USB, Wi-Fi |
| Ports | 1x USB, 1x Micro HDMI, 1x 3.5mm Audio |
| Memory Storage Capacity | 64 GB (TF Card included) |
| Battery Type | Lithium Ion (2 included) |
| Water Resistance Level | Not Water Resistant |
| Specific Uses For Product | Vlogging, Photography |

10. WARRANTY AND SUPPORT INFORMATION

For warranty claims, technical support, or further assistance, please refer to the contact information provided with your product packaging or visit the official NBD website. Keep your proof of purchase for warranty validation.