



Manuals.plus /

› HOTPEAK /

› HOTPEAK NV02 4K Night Vision Binoculars User Manual

HOTPEAK NV02

HOTPEAK NV02 4K Night Vision Binoculars User Manual

Model: NV02

INTRODUCTION

The HOTPEAK NV02 4K Night Vision Binoculars are designed for enhanced visibility in low-light and complete darkness conditions. Featuring 4K video recording, 48MP high-resolution imaging, 10X digital zoom, and a 7-level adjustable infrared (IR) illuminator, these binoculars allow for clear observation up to 1300 feet. Equipped with a long-lasting 5000mAh rechargeable battery and including a 32GB memory card, the NV02 is suitable for various outdoor activities such as wildlife observation, camping, and security surveillance.

WHAT'S IN THE BOX

Upon unboxing your HOTPEAK NV02 Night Vision Binoculars, please ensure all the following items are present:

- 1 × Night Vision Goggles
- 1 × 32GB TF Card
- 1 × Type-C Data Cable
- 1 × Neck Strap
- 1 × User Manual



The HOTPEAK NV02 Night Vision Binoculars shown with its complete set of accessories, including the device itself, a USB-C charging cable, a neck strap for portability, and a 32GB TF memory card for storage.

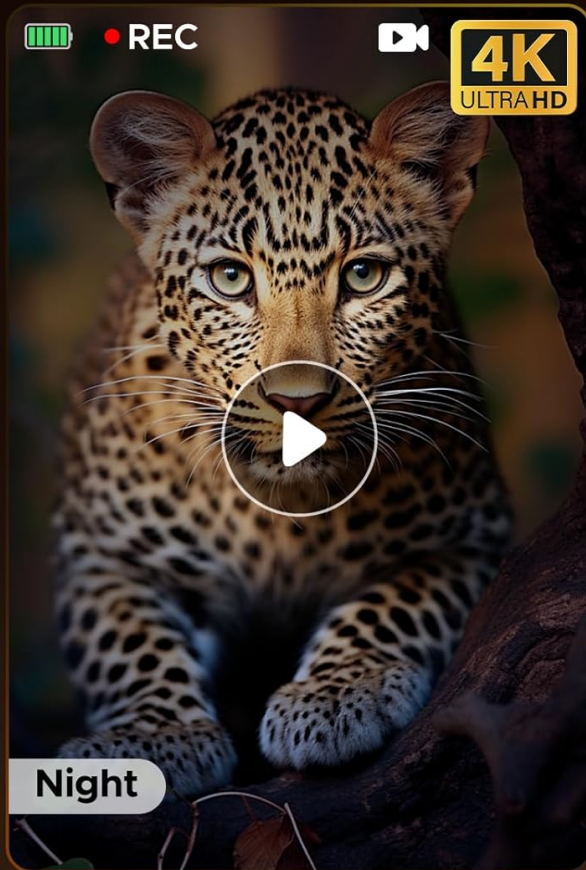
PRODUCT OVERVIEW

Familiarize yourself with the main components and controls of your NV02 Night Vision Binoculars.

Controls and Display

UHD 4K VIDEO RECORDING & 48MP PICTURE

Cinematic Video & Crystal Photos – Day or Night



The top panel of the NV02 features clearly labeled buttons for Menu, Mode, Power, Zoom In/IR Up, Zoom Out/IR Down, and Photo/Video Capture.

- **MENU Button:** Accesses the device settings and options.
- **MODE Button:** Switches between photo, video, and playback modes.
- **Power Button:** Turns the device on or off.
- **Zoom In / IR Up Button:** Increases digital zoom or increases IR illumination level.
- **Zoom Out / IR Down Button:** Decreases digital zoom or decreases IR illumination level.
- **Photo/Video Capture Button:** Takes a photo or starts/stops video recording.



The manual focus wheel, located on the front lens, allows for precise image clarity adjustment for objects at varying distances.

- **Manual Focus Wheel:** Adjusts the focus for clear viewing of objects at different distances. Rotate to sharpen the image.
- **Viewing Screen:** Integrated display for real-time viewing and playback of captured media.



The side panel reveals the Type-C charging port and the slot for the TF memory card, protected by a rubber cover.

- **Type-C Port:** Used for charging the internal 5000mAh battery and for transferring data to a computer or mobile device.
- **TF Card Slot:** Insert the included 32GB TF card here for storing photos and videos.

SETUP

Follow these steps to prepare your NV02 Night Vision Binoculars for use.

1. Battery Charging

The device comes with a built-in 5000mAh rechargeable battery. Before first use, fully charge the binoculars using the provided Type-C data cable and a compatible USB power adapter (not included). The charging indicator will show the charging status.

2. Memory Card Installation

Locate the TF card slot on the side of the binoculars. Gently insert the included 32GB TF card into the slot until it clicks into place. Ensure the card is inserted in the correct orientation.

3. Neck Strap Attachment

Attach the provided neck strap to the designated loops on the binoculars for secure and convenient carrying.

4. Power On

Press and hold the **Power Button** until the screen illuminates to turn on the device.

OPERATING INSTRUCTIONS

Learn how to effectively use your NV02 Night Vision Binoculars for various observation and recording tasks.

1. Day and Night Mode Switching

The NV02 automatically adjusts between day (color) and night (black and white infrared) modes. In low light or darkness, the infrared illuminator will activate to provide clear vision. You can manually adjust IR levels for optimal clarity.



The NV02 provides full-color viewing during the day and automatically switches to clear black-and-white infrared vision in complete darkness.

2. Focus Adjustment

For a clear image, rotate the **Manual Focus Wheel** located on the front lens. Adjust until the image on the viewing screen appears sharp and in focus for your desired viewing distance.

3. Digital Zoom

Use the **Zoom In / IR Up** and **Zoom Out / IR Down** buttons to adjust the digital zoom up to 10X. This allows you to magnify distant objects for closer inspection.



The digital zoom feature allows for magnification of distant subjects, providing detailed views from afar.

4. IR Illumination Adjustment

In night mode, press the **Zoom In / IR Up** or **Zoom Out / IR Down** buttons to cycle through 7 levels of infrared illumination. Adjust the IR level to achieve optimal brightness and clarity without overexposure.

ADJUSTABLE 7-LEVEL IR ILLUMINATION

Adjust Infrared Brightness for Perfect Night Vision



Adjust the 7-level IR illuminator to customize brightness for perfect night vision in various dark environments.

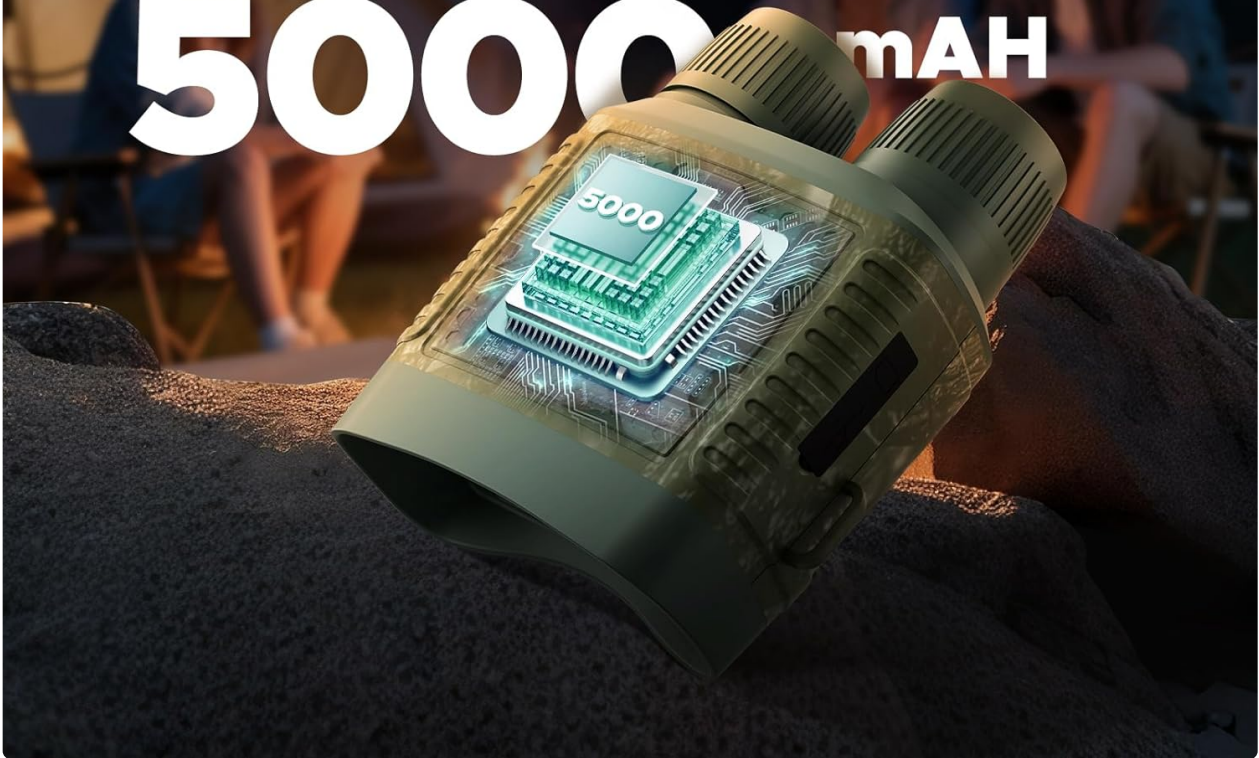
5. Photo and Video Capture

Press the **MODE Button** to switch between photo and video modes. In the desired mode, press the **Photo/Video Capture Button** to take a 48MP photo or start/stop 4K video recording.

5000MAH BATTERY ALL-DAY ADVENTURE

15H Daytime or 10H Night Vision

5000mAh



Capture stunning 4K video and high-resolution 48MP images, day or night, with the NV02 binoculars.

6. Playback and File Transfer

In playback mode (selected via the **MODE Button**), you can review your captured photos and videos directly on the device's screen. To transfer files, connect the binoculars to a computer or compatible mobile device using the Type-C data cable. The device will appear as a removable storage drive.

WIDELY APPLICATION

From hunting to surveillance, wildlife to security



Monitoring



Hunting



Observing



Camping

Easily preview and transfer your captured photos and videos to a PC or mobile device using the Type-C connection. Note: Mobile viewing currently requires a Type-C port.

7. Anti-Shake Feature

The NV02 includes an anti-shake feature to help stabilize footage, particularly useful when recording videos while moving or in unsteady conditions. This setting can typically be found and enabled within the device's menu.



The anti-shake function helps capture stable and clear footage even when the device is in motion.

8. Official Product Video

Watch this official video from HOTPEAK STORE for a detailed overview of the NV02 Night Vision Goggles, including its 4K resolution, 48MP camera, and 5000mAh battery.

Official product video showcasing the HOTPEAK Night Goggles with 4K video, 48MP photos, and a 5000mAh battery.

MAINTENANCE

Proper care and maintenance will extend the lifespan of your NV02 Night Vision Binoculars.

- **Cleaning Lenses:** Use a soft, lint-free cloth specifically designed for optical lenses to clean the objective and eyepiece lenses. Avoid abrasive materials or harsh chemicals.
- **Cleaning Body:** Wipe the device body with a soft, damp cloth. Do not immerse the device in water.
- **Storage:** Store the binoculars in a cool, dry place away from direct sunlight and extreme temperatures.

Remove the TF card if storing for extended periods.

- **Battery Care:** For long-term storage, ensure the battery is charged to approximately 50-70% to maintain battery health. Recharge periodically if not in use.

TROUBLESHOOTING

If you encounter issues with your NV02 Night Vision Binoculars, refer to the following common solutions:

Problem	Possible Cause	Solution
Device does not power on	Low battery; Power button not pressed correctly	Charge the battery; Press and hold the Power button for 3-5 seconds
Image is blurry	Out of focus; Dirty lens	Adjust the manual focus wheel; Clean the lenses with an optical cleaning cloth
Poor night vision clarity	IR illuminator level too low/high; Obstruction	Adjust the IR illumination level (1-7); Ensure no obstructions block the IR light or lens
Cannot record photos/videos	No TF card inserted; TF card full; TF card error	Insert TF card; Delete old files or replace card; Format TF card (via menu)
Device freezes or malfunctions	Software glitch	Press and hold the Power button to force restart; If issue persists, perform a factory reset via the menu.

SPECIFICATIONS

Feature	Detail
Model	NV02
Video Resolution	4K UHD
Image Resolution	48 MP
Digital Zoom	10X
IR Illumination	7 Levels Adjustable
Viewing Range (Night)	Up to 1300 ft (400m)
Battery Capacity	5000mAh Rechargeable Lithium-ion
Battery Life (Day)	Up to 16 hours
Battery Life (Night)	Up to 10 hours
Memory Card	32GB TF Card (Included)
Charging Port	Type-C
Item Weight	15.8 ounces
Dimensions	7.24 x 5.67 x 2.91 inches

WARRANTY AND SUPPORT

HOTPEAK is committed to customer satisfaction. Your NV02 Night Vision Binoculars come with the following:

- **1-Year Warranty:** Covers manufacturing defects.
- **30-Day Hassle-Free Returns:** For your peace of mind.
- **Lifetime Technical Support:** Assistance with any product-related inquiries or issues.

For support, please refer to the contact information provided in your product packaging or visit the official HOTPEAK website.