

VEKJ L8 Pro

VEKJ L8 Pro Sleep Earbuds User Manual

Model: L8 Pro

INTRODUCTION

The VEKJ L8 Pro Sleep Earbuds are designed for comfortable wear, especially for side sleepers, offering advanced features for audio playback and sleep enhancement. These earbuds integrate Bluetooth 5.4 connectivity, a smart touch screen charging case, and multiple sound modes to provide a personalized listening experience.

PACKAGE CONTENTS

Upon unboxing your VEKJ L8 Pro Sleep Earbuds, please verify that all components are present:

- 2 x VEKJ L8 Pro Sleep Earbuds (Left and Right)
- 1 x Portable Charging Case
- 1 x USB-C Charging Cable
- 1 x User Manual
- 2 x pairs of Earcaps (different sizes)



Image: The VEKJ L8 Pro Sleep Earbuds in their charging case, displaying the 'Sleep Mode' on the touch screen. The image also shows the compact design of the earbuds.

Touch Screen Sleep Earbuds

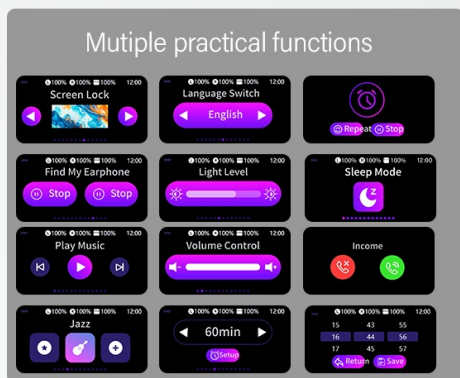


Image: A visual representation of the package contents, including the earbuds, charging case, USB-C cable, user manual,

and extra earcaps.

SETUP

1. Charging the Earbuds and Case

Before initial use, fully charge both the earbuds and the charging case. Connect the provided USB-C cable to the charging port on the case and a compatible USB power source. The touch screen display on the case will indicate the charging status.

- **Charging Time:** Approximately 1.5 hours for a full charge.
- **Play Time:** 6-8 hours on a single charge, up to 48 hours with the charging case.



Image: The charging case with earbuds, illustrating the 48-hour total battery life and individual charge times for earbuds and case.

2. One-Step Pairing

The VEKJ L8 Pro earbuds feature one-step pairing for convenience:

1. Open the lid of the charging case. The earbuds will automatically enter pairing mode.
2. On your device (smartphone, tablet, etc.), enable Bluetooth and search for "L8 Pro" in the list of

available devices.

3. Select "L8 Pro" to connect. Once paired, the earbuds will automatically connect to the last paired device when the case lid is opened.



Image: A smartphone screen showing the Bluetooth pairing process for the L8 Pro earbuds, highlighting the "L8 Pro" device name.

3. Wearing the Earbuds

For optimal comfort and sound quality, especially for side sleepers, ensure a proper fit:

1. Select the appropriate ear tips from the included options that best fit your ear canal.
2. Gently place the earbud into your ear canal.
3. Lightly rotate the earbud to ensure a secure and comfortable fit. The ergonomic design minimizes pressure, making them suitable for extended wear.

Multifunctional Touch Screen Sleep Earbuds

Rich functionality and easy operation



Image: A person wearing the VEKJ L8 Pro earbuds, demonstrating their small, ergonomic design that sits flush within the ear, ideal for side sleepers.

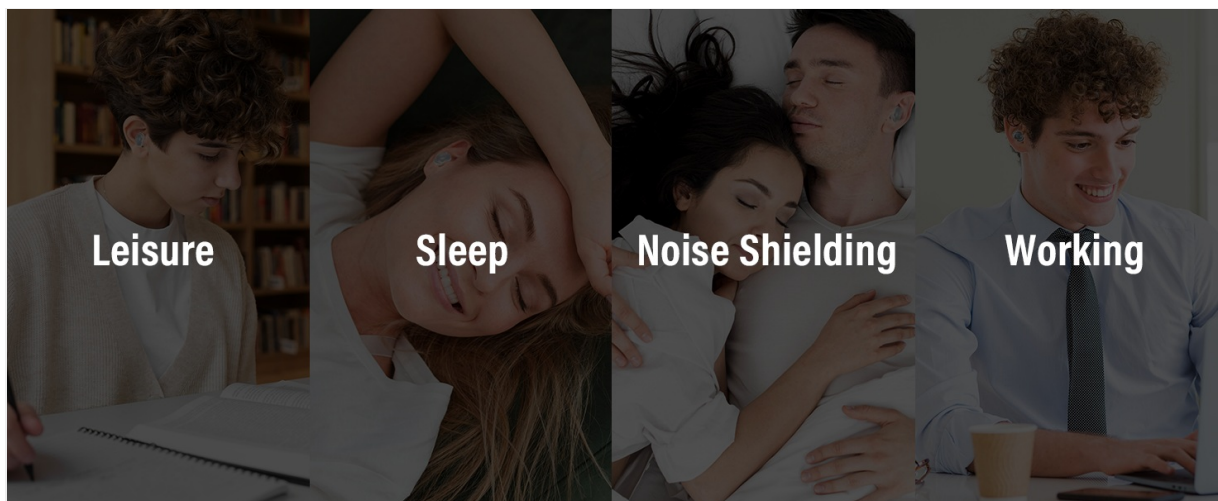


Image: A three-step visual guide on how to properly wear the L8 Pro earbuds, showing tip selection, insertion, and rotation for a secure fit.

OPERATING INSTRUCTIONS

1. Smart Touch Screen Controls (Charging Case)

The charging case features an intelligent full-color LED touch screen for convenient control without needing your connected device:

- **Music Playback:** Play, pause, skip tracks.
- **Volume Control:** Adjust volume levels.
- **Sleep Mode:** Activate a unique sleep mode that disables touch controls and notifications for uninterrupted rest.
- **Language Switching:** Select your preferred language.
- **Wallpaper Switching:** Customize the screen background.
- **Screen Brightness Adjustment:** Control the display's luminosity.
- **Find Earbuds:** Locate misplaced earbuds by triggering an audible alert.
- **Timer:** Set a timer for various functions.

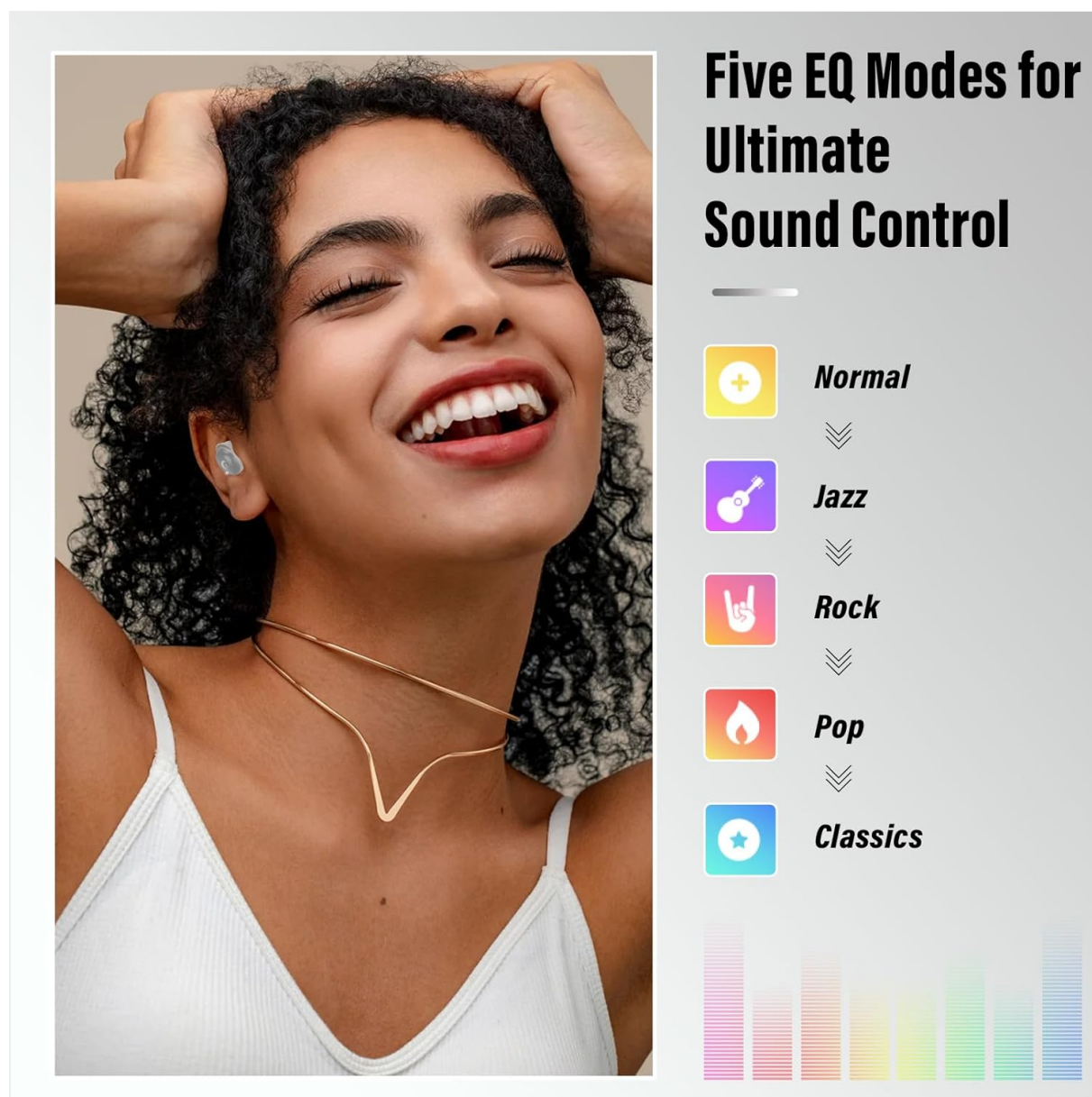


Image: The charging case's touch screen displaying various functions like screen lock, language switch, find earphone, light level, play music, volume control, EQ modes, and sleep mode.

2. Earbud Touch Controls

The earbuds themselves also feature smart touch controls for quick access to common functions:

- **Play/Pause:** Double-click (L/R)
- **Voice Assistant:** Triple-click (L/R)
- **Sleep Modes:** Click 4 times (L/R)
- **Volume +/-:** Click 1 time (L/R)
- **Previous/Next Song:** Long press 2s (L/R)
- **Answer/End Call:** Click 1 time (L/R)
- **Reject/Hang Up Call:** Long press 2s (L/R)

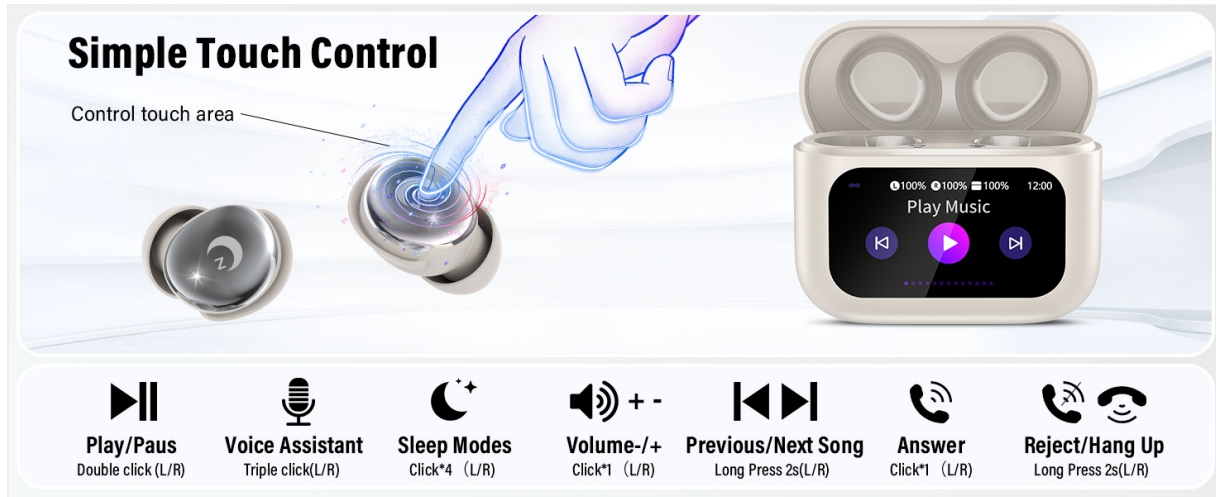


Image: A diagram illustrating the touch control gestures on the earbuds for various functions like play/pause, volume, track skipping, and call management.

3. Sleep Mode

The dedicated Sleep Mode is designed to provide an undisturbed sleep environment:

- Disables touch controls on the earbuds to prevent accidental interactions while sleeping.
- Silences all alerts and notifications from the earbuds.
- Blocks incoming calls and other wireless earbud functionalities to ensure peaceful rest.
- *Note: Sleep mode is unavailable in single-ear use. If the main earbud powers off, the secondary one exits sleep mode automatically.*



Personalize Your Sleep

Fall asleep faster and stay asleep longer

Image: A person sleeping peacefully with the earbuds, highlighting the benefits of Sleep Mode: no power off alarm, no low battery alarm, and touch disabled.

4. Equalization (EQ) Modes

Customize your audio experience with five adjustable EQ modes:

- Standard
- Classic
- Jazz
- Rock
- Pop

Switch between these modes via the charging case touch screen to match your listening preferences.

Crystal-Clear Hi-Fi Audio

Precision 13mm drivers deliver clarity and depth in every note



Image: A visual representation of the five EQ modes (Normal, Jazz, Rock, Pop, Classics) available on the VEKJ L8 Pro earbuds, allowing users to tailor their sound experience.

AUDIO QUALITY

The VEKJ L8 Pro earbuds are equipped with strong 13mm speaker driving units and an in-ear acoustic structure. This design produces rich bass, clear mid-range sound, and bright treble. The unique acoustic cavity design balances internal and external air pressure, preventing sound loss and ensuring stable, penetrating audio even in noisy environments.



The 13mm driver ensures deep bass and sharp treble for a balanced, vibrant listening experience.

Image: An exploded view of the earbud's internal components, highlighting the 13mm driver responsible for deep bass and sharp treble, ensuring a balanced listening experience.

MAINTENANCE

Water Resistance

The earbuds feature an IPX7 waterproof rating, providing protection against sweat, rain, and dust. This makes them suitable for use during workouts or in light rain conditions. However, they are not designed for submersion in water.

Cleaning

To maintain optimal performance and hygiene, regularly clean your earbuds and charging case:

- Wipe the earbuds and charging case with a soft, dry, lint-free cloth.
- Remove ear tips and clean them with mild soap and water, then dry thoroughly before reattaching.
- Avoid using abrasive materials or harsh chemicals.

TROUBLESHOOTING

If you encounter any issues with your VEKJ L8 Pro Sleep Earbuds, please refer to the following common solutions:

- **No Sound/Connectivity Issues:**
 - Ensure both earbuds are charged.
 - Verify Bluetooth is enabled on your device and "L8 Pro" is selected.
 - Try resetting the Bluetooth connection by pressing the reset button on the charging case.
 - Restart your device and attempt pairing again.
- **Earbuds Not Charging:**
 - Ensure the charging cable is securely connected to both the case and the power source.
 - Check if the charging contacts on the earbuds and inside the case are clean and free of debris.
 - Try a different USB-C cable or power adapter.
- **Touch Controls Unresponsive:**
 - Ensure Sleep Mode is not active, as it disables touch controls.

- Clean the touch sensor areas on the earbuds.
- **"Find My Earphone" Feature:**
 - Access this feature via the charging case touch screen to emit a sound from the misplaced earbud.

SPECIFICATIONS

Feature	Detail
Model Name	L8 Pro
Brand	VEKJ
Connectivity Technology	Wireless (Bluetooth 5.4)
Ear Placement	In-Ear
Form Factor	In-Ear
Noise Control	Passive Noise Cancellation
Battery Life	Up to 48 Hours (with charging case)
Charging Time	1.5 Hours
Water Resistance Level	IPX7
Item Weight	3.52 ounces
Included Components	Sleep Earbuds (L/R) x 2, USB-C charging cable x 1, Portable charging box x 1, User manual x 1

WARRANTY AND SUPPORT

VEKJ stands behind the quality of its products. Your L8 Pro Sleep Earbuds come with the following:

- **30 Days Exchange or Return:** For any initial product issues.
- **2 Years Warranty:** Covering manufacturing defects.
- **24/7 Customer Service:** For ongoing support and assistance.



Image: An infographic detailing VEKJ's customer support, including 30-day exchange/return, 2-year warranty, and 24/7 customer service.

OFFICIAL PRODUCT VIDEO

Your browser does not support the video tag.

Video: An official product video showcasing the VEKJ L8 Pro Sleep Earbuds, highlighting their features and design.