

## Manuals+

[Q & A](#) | [Deep Search](#) | [Upload](#)

manuals.plus /

- › [FTes RFKits](#) /
- › [FTes RFKits 2-Wire Tuya 1080P Video Intercom System User Manual](#)

## FTes RFKits 2-Wire Tuya 1080P Video Intercom System

# FTes RFKits 2-Wire Tuya 1080P Video Intercom System User Manual

**Brand:** FTes RFKits | **Model:** 2-Wire Tuya 1080P Video Intercom System

## 1. INTRODUCTION

This manual provides detailed instructions for the installation, operation, and maintenance of your FTes RFKits 2-Wire Tuya 1080P Video Intercom System. Please read this manual thoroughly before installation and use to ensure proper functionality and safety. Keep this manual for future reference.

## 2. PRODUCT FEATURES

- **7-inch Color Monitor:** High-resolution TFT LCD screen for clear viewing and simple operation. Supports two-way communication between the indoor monitor and the outdoor camera.
- **Wi-Fi Connectivity:** Compatible with Wi-Fi router connection via the TUYA app. Receive notifications on your phone when a visitor rings the doorbell, enabling remote home monitoring.
- **Automatic Recording and Capture:** The outdoor camera automatically takes a photo and a short video when a visitor rings the doorbell. Photos and videos are saved to a 32GB microSD card (included) or can be viewed on your phone.
- **Infrared Night Vision and IP54 Waterproofing:** Outdoor doorbell features a waterproof casing, integrated infrared sensor, 1080p camera, and a 90° wide viewing angle. Provides clear night vision and is resistant to rain, dust, and vandalism.
- **Wired Connection:** The indoor monitor and doorbell are wired for reliable communication. The maximum distance between the indoor monitor and the outdoor unit is 100 meters, with an optimal distance of approximately 30 meters.

## 3. PACKAGE CONTENTS

Please check the package for the following items:

- 1 x Outdoor Camera Unit

- 1 x Indoor Monitor Unit
- RFID Key Fobs (quantity may vary)
- Mounting Screws and Anchors
- Power Adapter
- Wiring Cables
- User Manual
- 32GB MicroSD Card (pre-installed or included separately)

## 4. SPECIFICATIONS

Feature	Specification
Monitor Size	7-inch TFT LCD
Video Resolution	1080P (Outdoor Camera), 1024p (Recording)
Viewing Angle	90° (Outdoor Camera)
Night Vision	Infrared
Waterproof Rating	IP54 (Outdoor Unit)
Connectivity	Wired (Indoor to Outdoor), Wi-Fi (Monitor to Router)
App Compatibility	TUYA Smart, SmartThings
Storage	MicroSD card (32GB included)
Power Source	Electric Cable (12-24V Power)
Installation Type	Screw-in, Wall Mount
Item Dimensions (L x W x H)	18 x 5 x 25 cm (approximate)
Product Weight	1.01 kg (approximate)

For detailed dimensions of the indoor and outdoor units, refer to the diagram below:

# 2-Wire Video Intercom Doorbell



**Figure 4.1:** Dimensions and Key Features Overview. This image illustrates the physical dimensions of both the indoor monitor (175mm x 115mm x 20mm) and the outdoor unit (90mm x 145mm x 45mm), alongside a visual summary of features including Tuya Wi-Fi, 1024\*600 resolution, AHD, 1080P camera, 120° viewing angle, night vision, rain-proof design, RFID card support, unlock function, and TF card support.

## 5. INSTALLATION GUIDE

This system uses a 2-wire connection between the indoor monitor and the outdoor doorbell unit. Ensure all power is disconnected before beginning installation.

### 5.1 Outdoor Unit Installation

1. Choose a suitable location near your door or gate, ensuring it is within the optimal 30-meter wired distance from the indoor monitor.
2. Mount the outdoor unit securely to a wall using the provided screws and anchors. Ensure it is at an appropriate height for visitors to easily reach the doorbell button and for the camera to capture faces clearly.
3. Connect the 2-wire cable from the outdoor unit to the designated terminals.

### 5.2 Indoor Monitor Installation

1. Select a convenient indoor location for the monitor, such as a wall in your living area or kitchen.

2. Mount the indoor monitor bracket to the wall using screws.
3. Connect the 2-wire cable from the outdoor unit to the indoor monitor.
4. Connect the power adapter to the indoor monitor and plug it into a power outlet.

### 5.3 Connecting to Electric Locks

The system can control up to two electric locks (e.g., a door lock and a gate lock). Refer to the wiring diagram below for connection details. Ensure correct polarity and voltage for your specific locks.



**Figure 5.1:** 2-Wire Video Intercom Doorbell System Wiring. This diagram illustrates how the indoor monitor connects to a 12-24V power source and the outdoor unit via a 2-wire cable. It also shows the connections for controlling two electric locks: a door lock and a gate lock.

## 6. OPERATING INSTRUCTIONS

### 6.1 Indoor Monitor Overview

The 7-inch touch screen monitor provides an intuitive interface for managing your intercom system. The main screen displays time, date, and various function icons.

# 7 Inch AHD IPS Touch Screen

Supports 11 languages: Chinese, English, Russian, Deutsch, Francais, Español, Italiano, Arabic, Portuguese, Polish, Ukrainian.



**Figure 6.1:** 7-inch AHD IPS Touch Screen Interface. This image shows the main menu of the indoor monitor, featuring touch icons for various functions such as viewing the door, talking to visitors, muting, opening two different doors, replaying recordings, accessing recordings, changing ringtones, system settings, and navigating back.

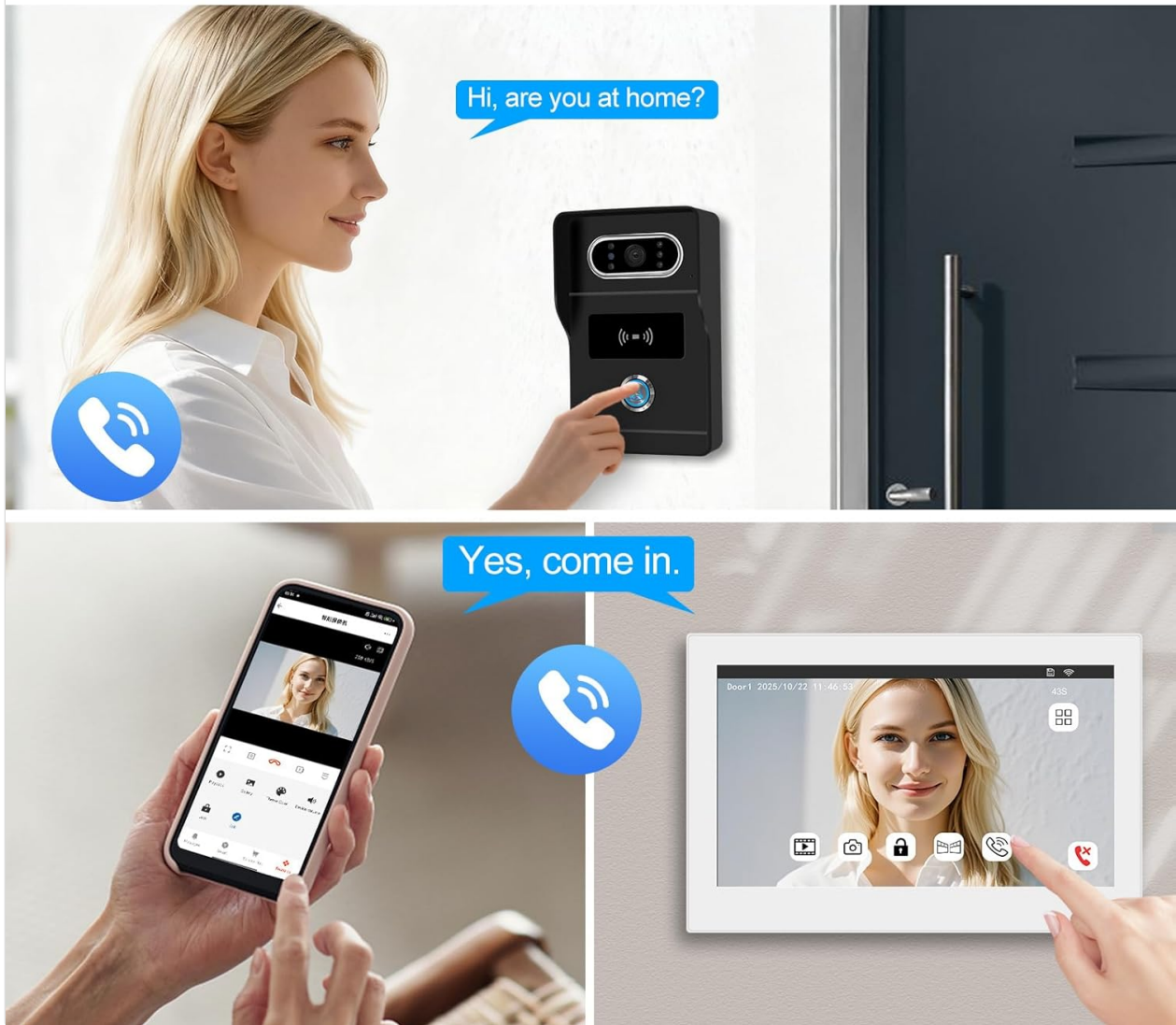
## 6.2 Two-Way Intercom Communication

When a visitor presses the doorbell button on the outdoor unit, the indoor monitor will ring and display the visitor's image. You can then initiate two-way communication.

1. When the doorbell rings, tap the 'Talk' icon on the monitor to speak with the visitor.
2. To end the conversation, tap the 'End Call' icon.
3. You can also communicate with visitors via your mobile phone using the Tuya app (see Section 7).

# Two-way Intercom

Enable to communicate with visitors via monitor or mobile phone



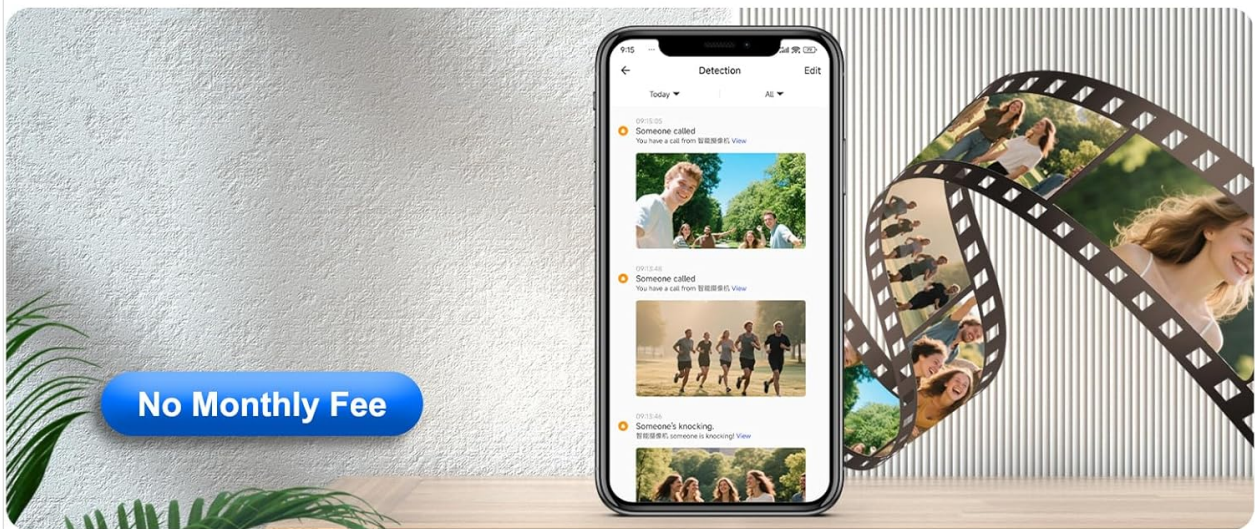
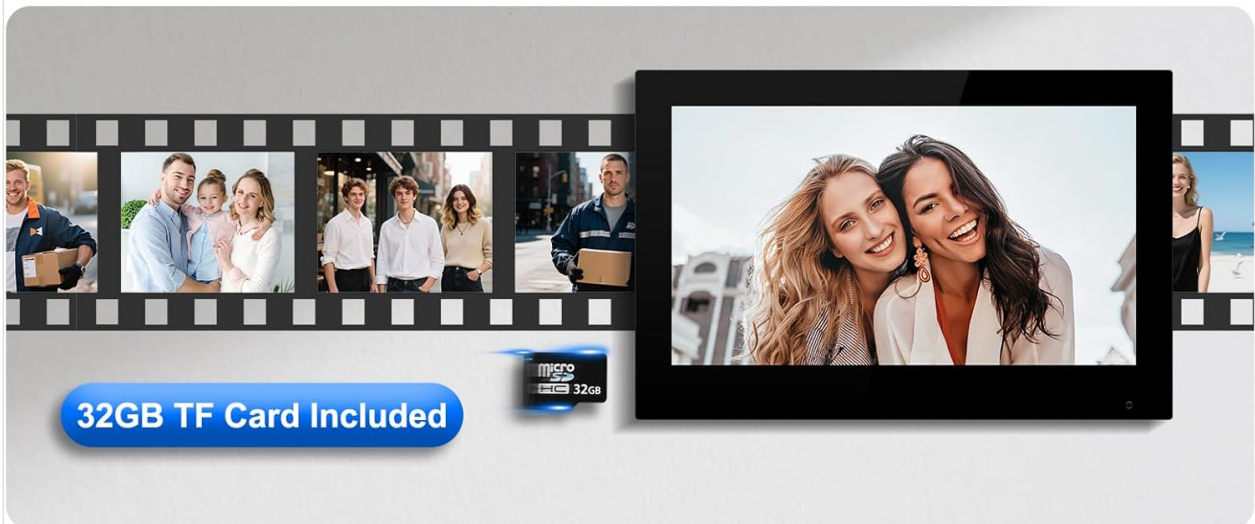
**Figure 6.2:** Two-Way Intercom Functionality. This image demonstrates the two-way communication feature, where a visitor at the outdoor unit can speak to a resident who can respond either through the indoor monitor or remotely via the mobile application.

## 6.3 Automatic Recording and Playback

The system automatically records events for security and review.

1. When a visitor rings the doorbell, the outdoor camera automatically captures a photo and a short video.
2. These recordings are saved to the included 32GB microSD card.
3. To view recordings, tap the 'Recording' or 'Replay' icon on the indoor monitor. You can also access them via the Tuya app.
4. The system also supports motion detection recording, capturing events when motion is detected near the outdoor unit.

# Photo / Video Recording and Playback



**Figure 6.3:** Photo/Video Recording and Playback. This image highlights the system's ability to record photos and videos, storing them on the included 32GB TF card. It also shows how these recordings and detection events can be reviewed on a smartphone application.

## 6.4 Unlocking Methods

The system offers multiple ways to unlock connected doors or gates.

1. **Indoor Unit Unlock:** Tap the 'Open the door 1' or 'Open the door 2' icon on the indoor monitor to unlock the corresponding electric lock.
2. **RFID Card Unlock:** Present an authorized RFID key fob to the outdoor unit's RFID reader to unlock the door/gate.
3. **App Unlock:** Use the Tuya Smart app on your smartphone to remotely unlock doors or gates.

# 3 IN 1 UNLOCKING METHOD

Embark on your smart life



**Figure 6.4:** 3-in-1 Unlocking Methods. This image demonstrates the three convenient ways to unlock your door or gate: directly from the indoor monitor, using an RFID card on the outdoor unit, or remotely through the Tuya Smart mobile application.

## 7. WI-FI CONNECTION AND TUYA APP

To utilize remote monitoring and control features, connect your indoor monitor to your home Wi-Fi network and set up the Tuya Smart app.

### 7.1 Connecting to Wi-Fi

1. On the indoor monitor, navigate to 'Settings' and then 'Network' or 'Wi-Fi'.
2. Select your Wi-Fi network from the list and enter the password.
3. Once connected, the Wi-Fi icon on the monitor should indicate a successful connection.

### 7.2 Tuya Smart App Setup

1. Download the 'Tuya Smart' app from your smartphone's app store (iOS or Android).
2. Register for a new account or log in if you already have one.

3. In the app, tap '+' to add a new device. Follow the on-screen instructions to pair your video intercom system. This typically involves scanning a QR code displayed on the monitor or selecting the device type manually.
4. Once paired, you will receive notifications, view live video, communicate with visitors, and unlock doors remotely through the app.

## 8. MAINTENANCE

---

Regular maintenance ensures the longevity and optimal performance of your intercom system.

- **Cleaning:** Use a soft, dry cloth to clean the indoor monitor and outdoor unit. For stubborn dirt, a slightly damp cloth can be used, but avoid excessive moisture. Do not use abrasive cleaners or solvents.
- **Outdoor Unit:** Periodically check the outdoor camera lens for dirt, dust, or spiderwebs that might obstruct the view. Clean gently if necessary.
- **Wiring:** Ensure all wired connections remain secure and free from damage.
- **Software Updates:** Check the Tuya Smart app or the monitor's settings for available firmware updates to ensure your system has the latest features and security enhancements.

## 9. TROUBLESHOOTING

---

If you encounter issues with your system, refer to the following common problems and solutions:

- **No Power:** Ensure the power adapter is securely plugged into both the monitor and a working electrical outlet. Check circuit breakers.
- **No Video/Audio:** Verify that the 2-wire cable between the indoor and outdoor units is correctly connected and not damaged. Restart both units.
- **Wi-Fi Connection Issues:** Ensure your Wi-Fi router is working and the signal strength is adequate. Re-enter the Wi-Fi password on the monitor. Restart your router and the monitor.
- **App Notifications Not Received:** Check your phone's notification settings for the Tuya Smart app. Ensure the app is running in the background and the monitor is connected to Wi-Fi.
- **Door/Gate Not Unlocking:** Verify that the electric lock is correctly wired to the system and receiving power. Check the lock's functionality independently. Ensure RFID key fobs are correctly programmed.
- **Poor Night Vision:** Ensure the outdoor camera lens is clean and free from obstructions.

If problems persist, contact customer support for further assistance.

## 10. WARRANTY AND SUPPORT

---

Your FTes RFKits 2-Wire Tuya 1080P Video Intercom System comes with a standard manufacturer's warranty. Please refer to the warranty card included in your package or visit the official FTes RFKits website for detailed warranty terms and conditions.

For technical support, troubleshooting assistance, or spare parts inquiries, please contact FTes RFKits customer service through the contact information provided on their official website or your purchase platform.

