

Ilano S850

Ilano S850 Wireless HDMI Transmitter and Receiver User Manual

1. INTRODUCTION

This manual provides detailed instructions for the setup, operation, and maintenance of your Ilano S850 Type-C Wireless HDMI Transmitter and Receiver. This device offers a convenient solution for wirelessly transmitting audio and video from various devices to a monitor, projector, or TV.



Image: The Ilano S850 Wireless HDMI Transmitter and Receiver units, showcasing their compact design.

2. WHAT'S IN THE BOX

- HDMI Transmitter and Receiver

3. SETUP INSTRUCTIONS

The Ilano S850 offers two primary connection modes for versatile use.

3.1. Transmitter and Receiver Mode

This mode is ideal for devices that support USB Type-C 3.2 with DisplayPort functionality. It provides a plug-and-play experience without the need for Wi-Fi, apps, or Bluetooth setup.

1. **Power the Receiver (RX):** Connect the Receiver (RX) unit to a 5V adapter or a USB port on your monitor/TV for power.

2. **Connect RX to Display:** Plug the HDMI cable from the Receiver (RX) into an available HDMI port on your monitor, projector, or TV.
3. **Connect Transmitter (TX) to Source:** Plug the Transmitter (TX) unit into the USB Type-C port of your laptop, tablet, or smartphone. Ensure your device supports DisplayPort output via USB-C.
4. **Automatic Connection:** The devices will automatically connect. You can press the TX button to switch or pause casting.

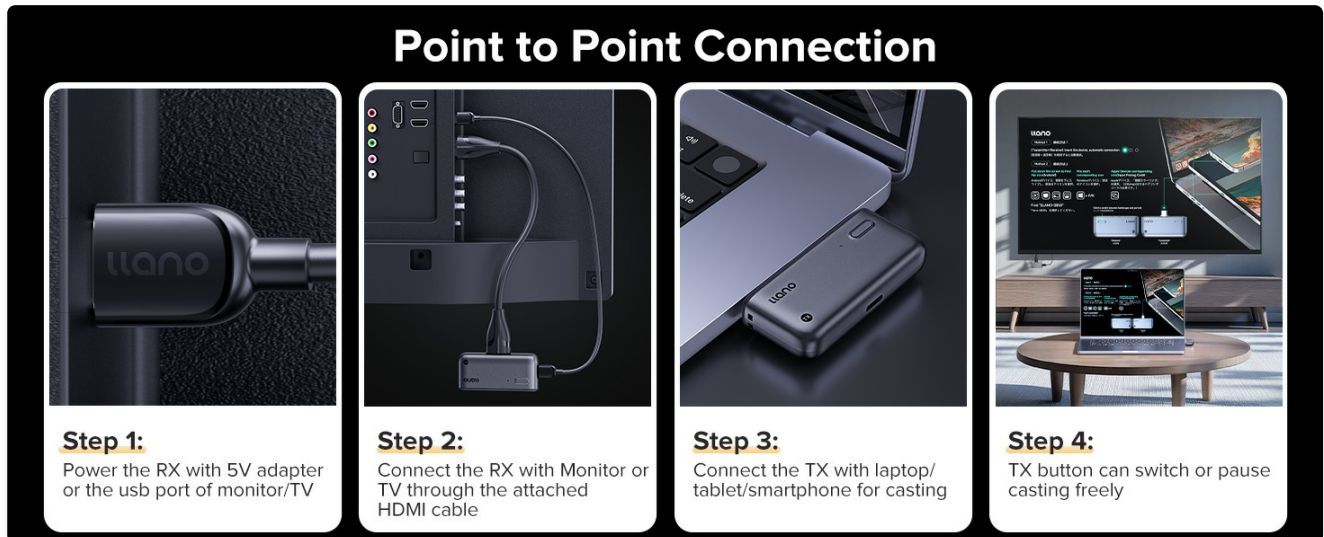


Image: Step-by-step visual guide for setting up the Transmitter and Receiver in point-to-point mode.

3.2. Receiver Only Mode

This mode allows direct mirroring from compatible devices (phones, tablets, laptops) to the receiver without using the transmitter unit. This typically uses your device's built-in wireless projection features.

1. **Power the Receiver (RX):** Connect the Receiver (RX) unit to a 5V adapter or a USB port on your monitor/TV for power.
2. **Connect RX to Display:** Plug the HDMI cable from the Receiver (RX) into an available HDMI port on your monitor, projector, or TV.
3. **Initiate Wireless Projection from Source Device:**
 - **Android Phone:** Pull down the notification menu, tap the wireless screen icon (often labeled 'Wireless Projection' or 'Smart View'), and select "LLANO-S850".
 - **Apple Phone (iOS):** Click the floating circle, swipe down the menu, select 'Screen Mirroring', find "LLANO-S850", and enter the PIN code displayed on your TV.
 - **Apple Mac (macOS):** Click the floating circle, swipe down the menu, select 'Screen Mirroring', find "LLANO-S850", and enter the PIN code displayed on your TV.
 - **Windows 10/11:** Press 'Windows key + K', select "LLANO-S850" from the available displays.

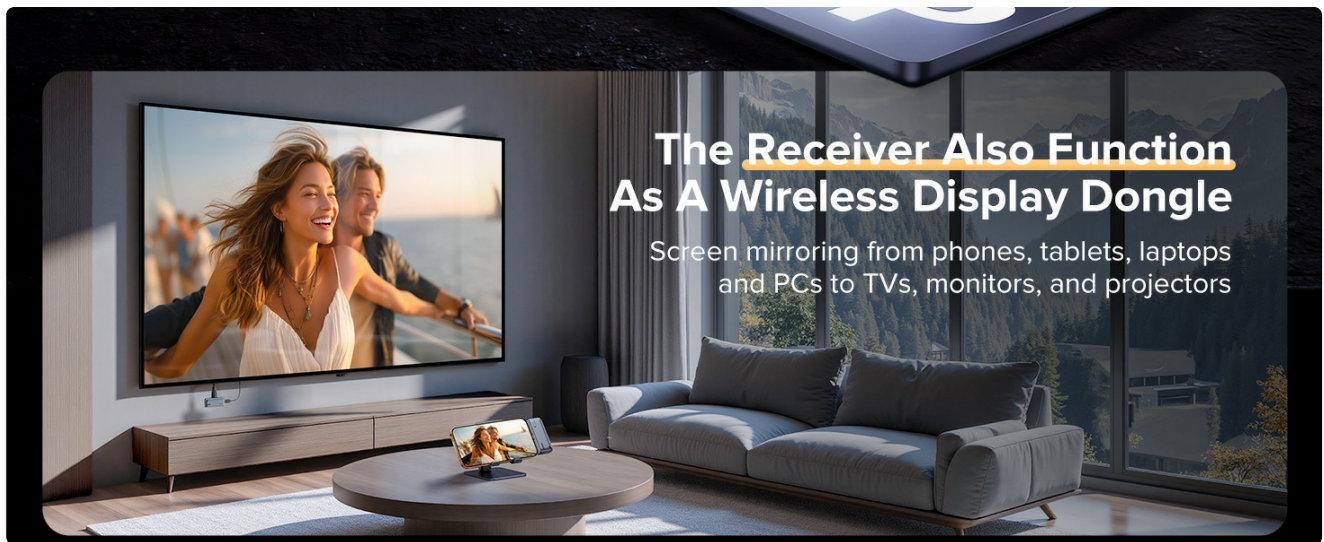


Image: Overview of both Transmitter+Receiver and Receiver Only connection methods.

4. OPERATING INSTRUCTIONS

4.1. Display Modes

The Ilano S850 supports both mirroring and extended display modes, allowing you to customize your viewing experience.

- **Mirroring Mode:** Duplicates your source device's screen onto the connected display.
- **Extended Display Mode:** Extends your desktop across multiple screens, providing more workspace.



Image: Illustration of Copy Mode (mirroring) and Extended Mode for display customization.

4.2. Charging While in Use

The Transmitter (TX) unit features a Type-C charging port that allows you to charge your smartphone, laptop, or other devices while simultaneously using the wireless HDMI function. This eliminates the need for an external power source for the TX unit itself, as it draws power from the connected device.

Note: For optimal connection and to prevent disconnection, please remove your phone case when using the device.

Crystal-Clear 1080P HD Video

Enjoy a stunning home theater experience on a large screen



Image: The Transmitter unit connected to a phone, illustrating its ability to charge the phone via its Type-C port while in use.

4.3. Wireless Transmission

The device supports 5G/2.4G dual-band transmission, providing a strong and stable signal for distances up to 165 feet (50 meters). This ensures smoother video playback and a reliable connection, even through minor obstacles.

Note: Transmission distance and speed may be affected if the signal passes through thick walls or encounters significant obstacles.

Crystal-Clear 1080P HD Video

Enjoy a stunning home theater experience on a large screen



Image: Diagram illustrating the dual-channel 5G technology for enhanced signal strength and interference immunity.

4.4. Ultra HD Quality

The Ilano S850 supports 1080P/60Hz Ultra HD output, delivering a high-quality visual experience suitable for various applications, including presentations, meetings, family entertainment, and gaming.



Image: A laptop displaying content wirelessly to a large screen, highlighting the 1080p/60Hz HD streaming capability.

4.5. Compatibility

The device is compatible with a wide range of source devices (phones, tablets, laptops, PCs) and display devices (monitors, projectors, TVs).

- **Source Interface:** USB Type-C 3.2 with DisplayPort support.
- **Supported Devices:** All iOS phones are supported. Google Pixel phones are not supported for signal source detection.



Image: Visual representation of compatible source devices (smartphones, tablets, laptops) and display devices (projectors, TVs, monitors).

4.6. Multiple Uses

The Ilano S850 is designed for various environments, including meetings, home theater setups, educational presentations, and outdoor use.

Multiple Uses



Meeting



Home theater



Teaching



Outdoor

Image: Depiction of the Ilano S850 being used in various scenarios such as meetings, home theater, teaching, and outdoor settings.

5. MAINTENANCE

To ensure the longevity and optimal performance of your Ilano S850, follow these general maintenance guidelines:

- Keep the device clean and free from dust. Use a soft, dry cloth for cleaning.
- Avoid exposing the device to extreme temperatures, humidity, or direct sunlight.
- Do not attempt to disassemble or repair the device yourself. Contact customer support if issues arise.
- Store the transmitter and receiver units together when not in use to prevent loss and damage.

6. TROUBLESHOOTING

If you encounter issues with your Ilano S850, refer to the following troubleshooting tips:

- **No Display/Signal:**
 - Ensure both the Transmitter (TX) and Receiver (RX) units are properly connected and powered. The Receiver (RX) requires a 5V/2A power supply.
 - Verify that the HDMI cable is securely connected to the display device.
 - Confirm that your source device's USB Type-C port supports DisplayPort output.
 - If using Receiver Only Mode, ensure your device's wireless projection feature is activated and correctly connected to "LLANO-S850".
- **Intermittent Connection/Lag:**
 - Reduce the distance between the transmitter and receiver.
 - Minimize obstacles (walls, furniture) between the units.
 - Ensure there are no other strong wireless signals causing interference.
- **Transmitter (TX) Not Powering On/Charging:**
 - Ensure the source device (phone, laptop) has sufficient power to supply the TX unit. If the source device is low on power, connect an external 5V/2A power adapter to the TX unit's Type-C charging port.
 - Remove any phone cases that might prevent proper contact with the Type-C port.
- **Compatibility Issues:**
 - Google Pixel phones are not supported for signal source detection.

- All iOS phones are supported.

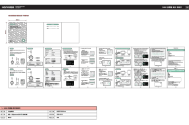
7. SPECIFICATIONS


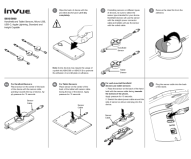


Feature	Specification
Model Number	S850
Connectivity Technology	Wireless Transmitter and Receiver
Wireless Transmission Distance	Up to 165 ft (50 meters)
Wireless Frequency	5G + 2.4G Dual-band
Video Output Resolution	1080P@60Hz Ultra HD
Video Encoding	H.264, H.265/HEVC
Audio Output Mode	Stereo
Surround Sound Channel Configuration	5.1
Total HDMI Ports	2 (on receiver unit)
Transmitter Connector Type	USB Type-C 3.2 (DisplayPort compatible)
Receiver Connector Type	HDMI
Item Weight	5.3 ounces
Package Dimensions	5.47 x 4.41 x 1.26 inches

8. WARRANTY AND SUPPORT

For warranty information, technical support, or any inquiries regarding your Ilano S850, please refer to the contact details provided with your product packaging or visit the official Ilano website.

Related Documents - S850

	<p>LLANO S450 Smart Lock User Manual and FCC Information</p> <p>User manual and FCC compliance details for the LLANO S450 smart lock (model 2A77D-S450) by Shenzhen Green Giant Energy Technology Development Co.,Ltd. Includes installation guidance and regulatory information.</p>
---	---

	<p>Llano High-Speed Foldable Hair Dryer User Manual & Safety Guide</p> <p>Comprehensive user manual for the Llano High-Speed Foldable Hair Dryer, covering product features, safety instructions, how to use, cleaning, maintenance, troubleshooting, and warranty information.</p>
	<p>InVue S850/S960 Sensor Installation Guide: Secure Retail Devices</p> <p>Learn how to install and use the InVue S850/S960 handheld and tablet security sensors for retail environments. Includes step-by-step instructions and accessory information.</p>
	<p>Shenzhen Santuo S850 Foldable Bone Conduction Headphones User Manual</p> <p>Comprehensive user manual for the Shenzhen Santuo S850 foldable bone conduction Bluetooth headphones, detailing setup, operation, features like MP3 mode and voice control, charging, and FCC compliance.</p>
	<p>Toshiba Satellite L850, L855, C850, C855, S850, S855 Series User's Manual</p> <p>Comprehensive user manual for Toshiba Satellite L850, L855, C850, C855, S850, S855, and Satellite Pro L850, C850 series laptops. Covers setup, operation, troubleshooting, and regulatory compliance.</p>