

Divoom Pixoo-16

Divoom Pixoo-16 Pixel Art Digital Frame User Manual

Model: Pixoo-16 | Brand: Divoom

				Introduction	What's			
Included	Setup	Operation	Mounting	Maintenance	Troubleshooting	Specifications	Warranty	
				& Support				

1. INTRODUCTION

The Divoom Pixoo-16 is a versatile 16x16 pixel art digital frame designed to enhance your space with customizable visuals. This device connects via Wi-Fi and is controlled through a dedicated mobile application, allowing for a wide range of functions from displaying pixel art and animations to providing real-time information like time, weather, and social media statistics.

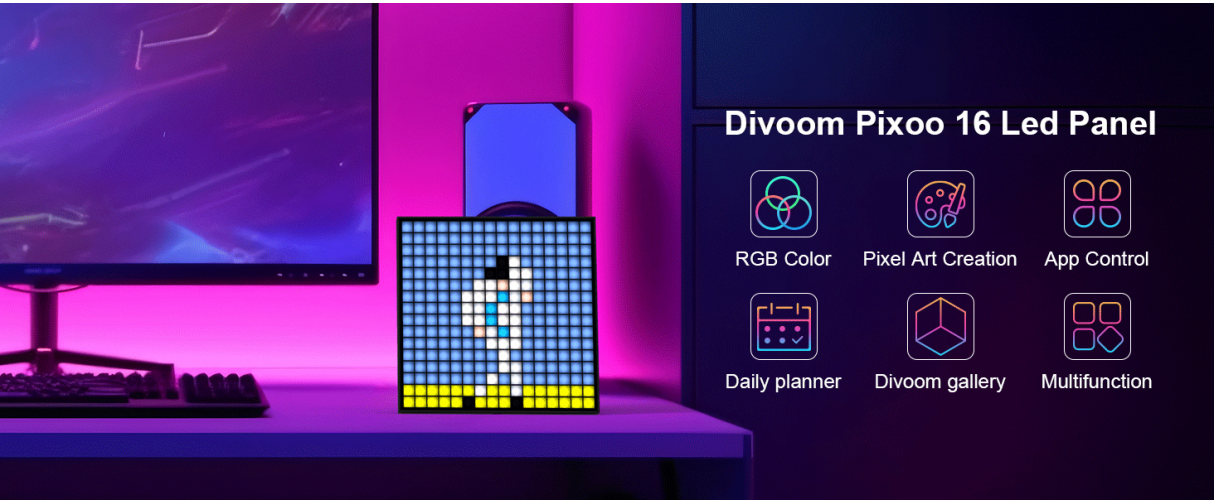


Image: Overview of Divoom Pixoo-16 features including RGB Color, Pixel Art Creation, App Control, Daily Planner, Divoom Gallery, and Multifunctionality.

2. WHAT'S INCLUDED

- Pixoo-16 Device
- User Manual
- Type-C Charging Cable (USB-C to USB-A)

Note: A 5V/2A USB-A power adapter is required for operation and is not included in the package. Please provide your own power adapter.

3. SETUP

3.1 Power Connection

1. Connect the provided USB-C charging cable to the Pixoo-16 device.
2. Plug the USB-A end of the cable into a 5V/2A USB-A power adapter (not included).
3. Plug the power adapter into a wall outlet. The device will power on automatically and enter pairing mode.

3.2 App Installation

1. Scan the QR code below or search for 'Divoom' in your device's app store (App Store for iOS, Google Play for Android).
2. Download and install the Divoom application.

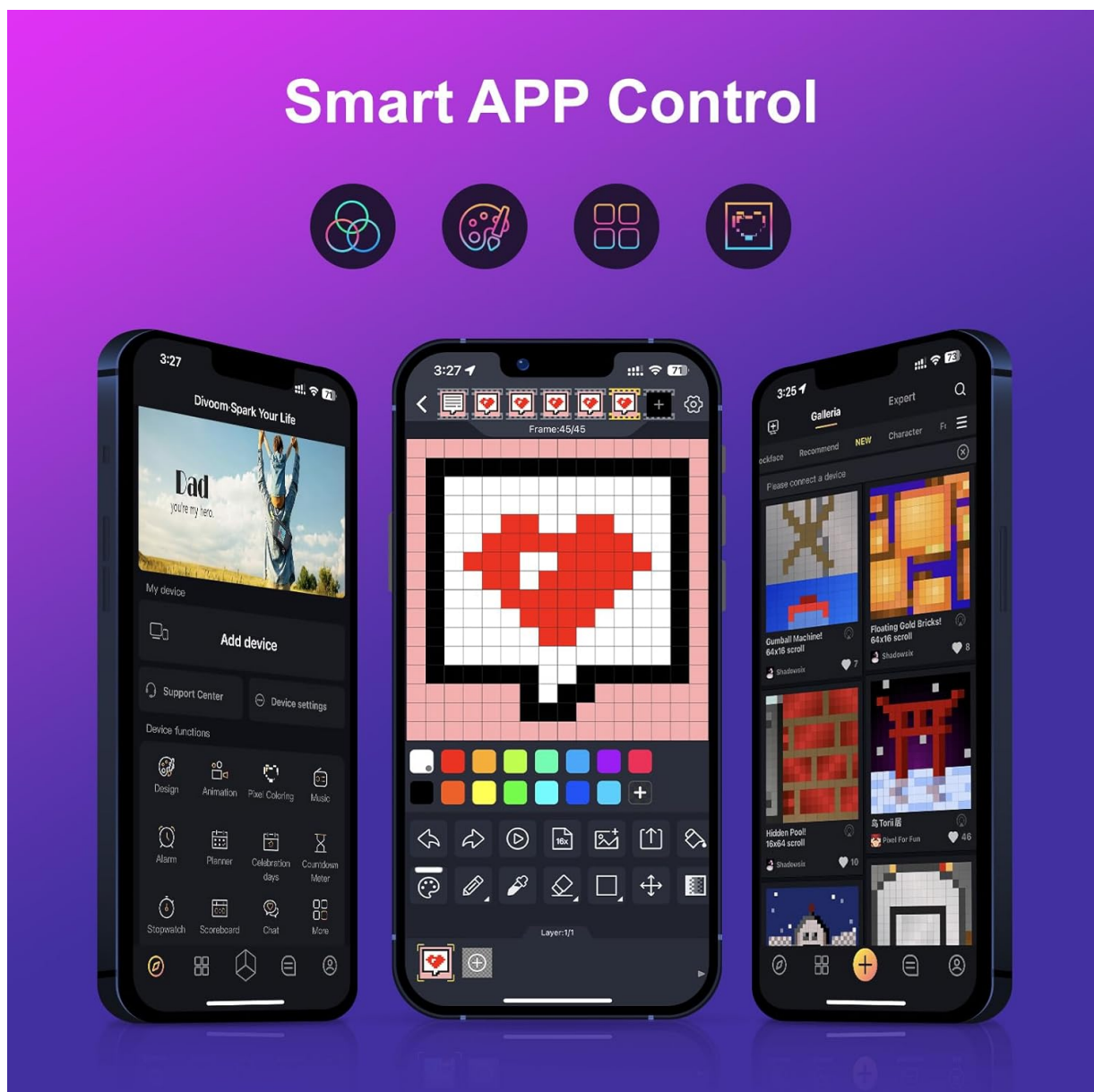


Image: Screenshot of the Divoom mobile application interface, showing options for design, animation, and device functions.

3.3 Device Pairing

1. Ensure your phone's Bluetooth is enabled.
2. Open the Divoom app and log in or register a new account.
3. In the app, navigate to 'Add Device' or 'My Devices'.
4. Select 'Pixoo-16' from the list of available devices.
5. Follow the on-screen prompts to connect the Pixoo-16 to your 2.4GHz Wi-Fi network. Ensure your Wi-Fi password is correct and does not contain special characters or spaces.
6. Once connected, the device may automatically update its firmware. Please wait patiently during this process.

Note: The Pixoo-16 only supports 2.4GHz Wi-Fi networks. Ensure the device is within 10 meters or 30 feet of your Wi-Fi router for optimal connectivity.

Your browser does not support the video tag.

Video: This video demonstrates the Divoom Pixoo-16 displaying custom animations, a clock, and weather information, suitable for a gaming room or desk setup. It highlights the device's dynamic visual capabilities.

4. OPERATING THE PIXOO-16

4.1 Device Buttons

- **Power Button:** Tap to turn the device on/off. Press and hold for 10 seconds to reset Wi-Fi connections.
- **Channel Button:** Tap to cycle through different display channels/modes.
- **Microphone:** Located on the side, it enables music visualization and noise meter functions.

4.2 App Functions

The Divoom app provides extensive control and customization options for your Pixoo-16:

- **Pixel Art & Animations:** Browse a vast online gallery of community-created pixel art and animations. You can also create and upload your own designs.

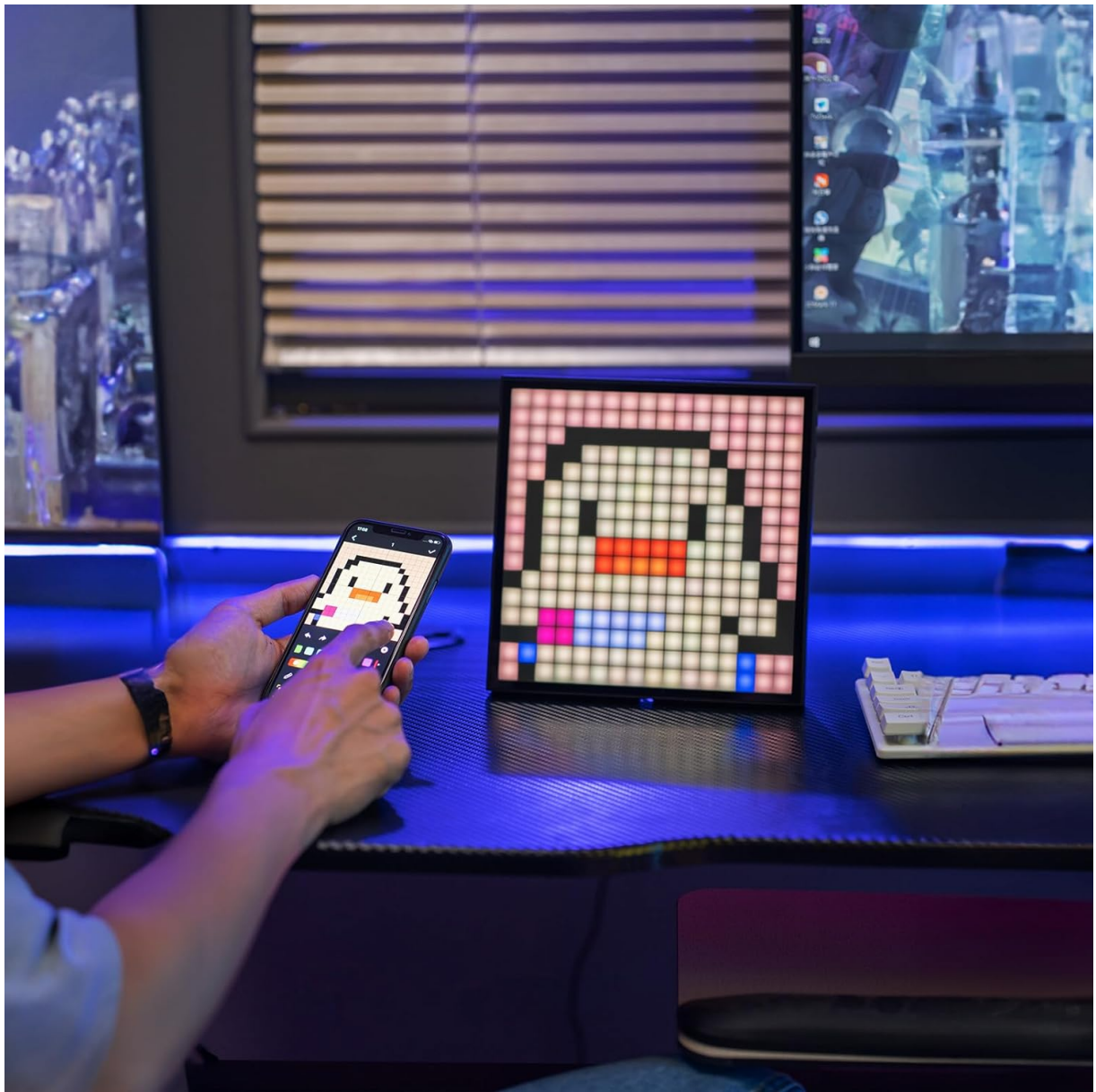


Image: A user interacting with the Divoom app on a smartphone to create pixel art, which is simultaneously displayed on the Pixoo-16 device.

- **Clock & Weather:** Display various clock faces and real-time weather information.



Image: The Divoom Pixoo-16 displaying a pixel art weather forecast on a shelf in a living room setting.

- **Social Tracker:** Monitor social media follower counts and other statistics.

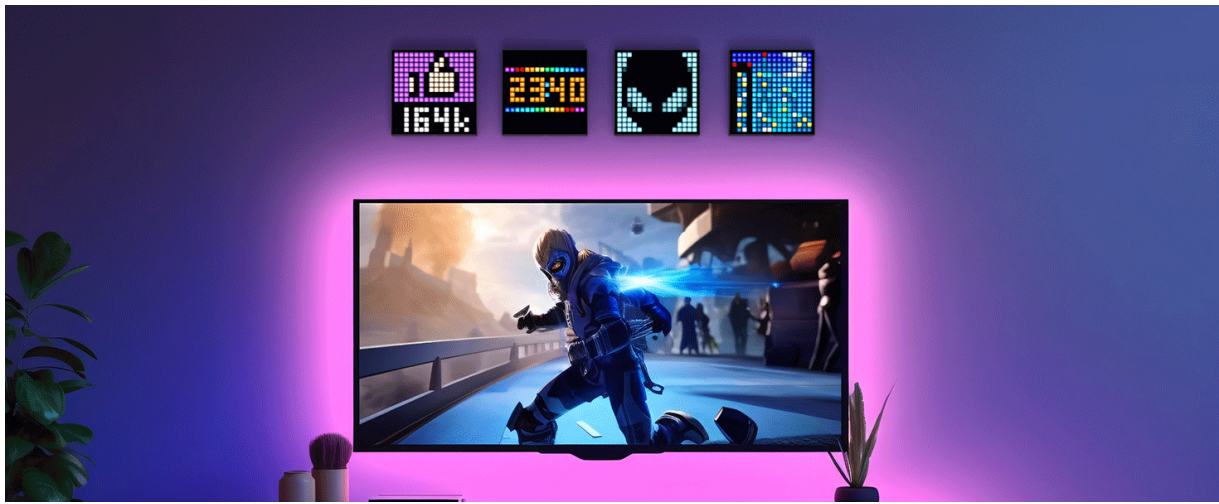


Image: Four Divoom Pixoo-16 devices mounted above a television, displaying various social media statistics and pixel art.

- **Music Visualizer:** The built-in microphone allows the Pixoo-16 to react to music and sounds, displaying dynamic visual patterns.
- **Planner & Scoreboard:** Utilize the planner function for daily schedules or use the scoreboard for games and activities.
- **Stock & Cryptocurrency Tracker:** Display real-time stock and cryptocurrency prices.



Image: The Divoom Pixoo-16 displaying cryptocurrency information on a coffee table in a living room.

- **Noise Meter:** Visually represent ambient sound levels.

Your browser does not support the video tag.

Video: This video showcases the Divoom Pixoo-16 pixel art display in various settings, demonstrating its versatility for custom pixel art, animations, and interactive features.

5. MOUNTING OPTIONS

The Pixoo-16 offers flexible placement options:

- **Desk Stand:** Use the integrated kickstand on the back of the device for desktop placement.
- **Wall Mount:** The device features a keyhole slot on the back, allowing it to be hung on a wall using a single nail or screw.

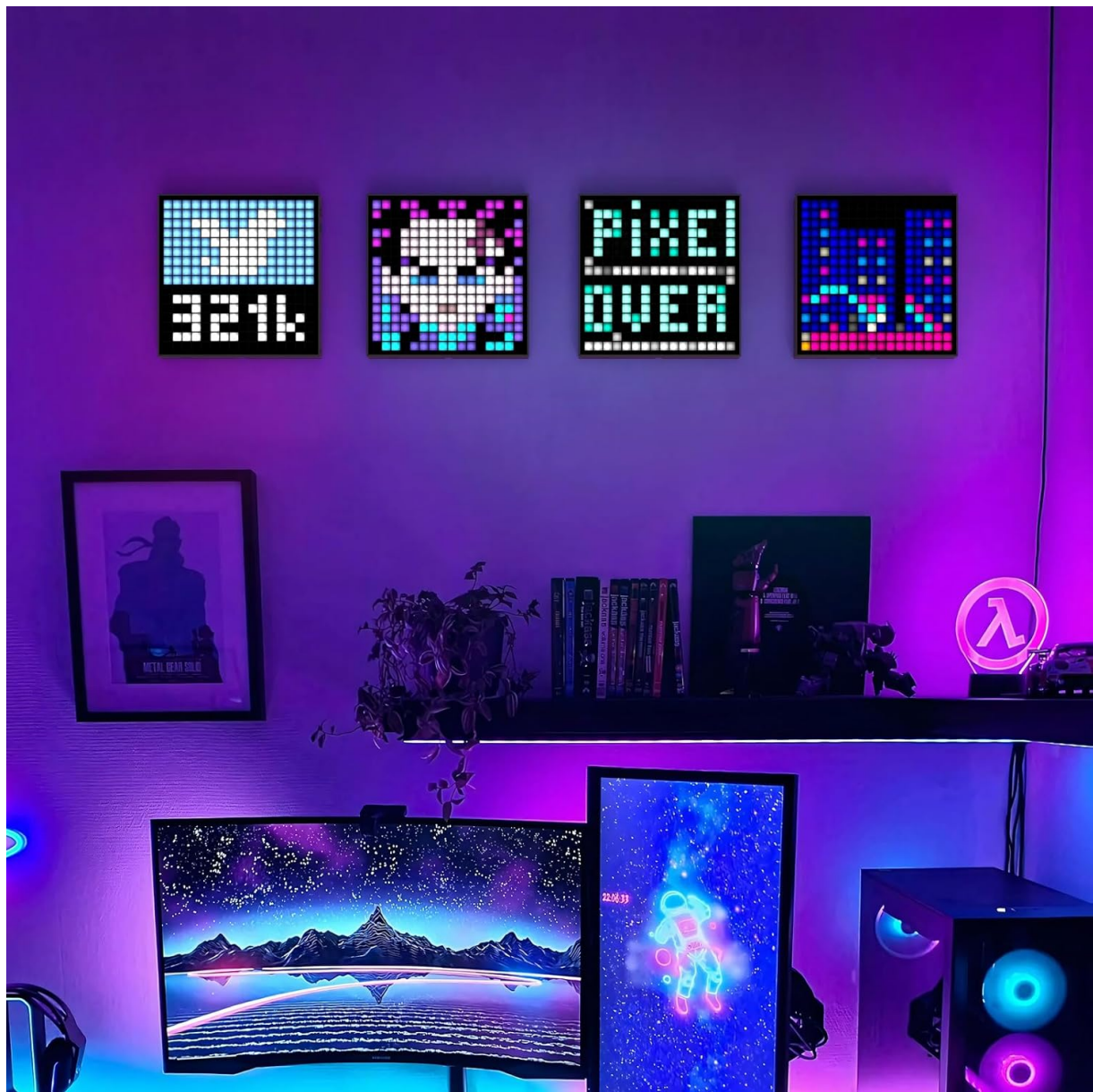


Image: Multiple Divoom Pixoo-16 devices displaying various pixel art designs, mounted on a wall in a vibrant gaming room setup.

6. MAINTENANCE

- **Cleaning:** Use a soft, dry cloth to gently wipe the screen and device casing. Avoid using harsh chemicals or abrasive materials.
- **Storage:** When not in use for extended periods, store the Pixoo-16 in a cool, dry place away from direct sunlight.

7. TROUBLESHOOTING

- **Device Not Powering On:** Ensure the USB-C cable is securely connected and the power adapter is a 5V/2A USB-A type.
- **Wi-Fi Connection Issues:**
 - a. Confirm your Wi-Fi network is 2.4GHz.
 - b. Check that the Wi-Fi password entered in the app is correct.
 - c. Ensure the device is within range of your Wi-Fi router.

d. Press and hold the power button for 10 seconds to reset Wi-Fi settings on the device, then attempt pairing again.

- **App Not Detecting Device:** Ensure Bluetooth is enabled on your phone and the Pixoo-16 is in pairing mode (displaying the 'PAIR' animation).
- **Display Malfunctions:** If the display shows unusual patterns or is unresponsive, try restarting the device by unplugging and re-plugging the power cable.

8. SPECIFICATIONS

Product Dimensions	10 x 5.5 x 0.99 inches
Item Weight	2.27 pounds
Brand	Divoom
Resolution	16x16 Pixel LED Display
Compatible Devices	Smartphone
Connectivity Technology	Wi-Fi (2.4GHz)
Power Source	Corded Electric (5V/2A USB-A adapter required)

9. WARRANTY & SUPPORT

For warranty information and technical support, please refer to the official Divoom website or contact Divoom customer service directly. Keep your purchase receipt for any warranty claims.