



Manuals.plus /

› Raemond /

› Raemond M70 11-inch Android 16 Tablet User Manual

## Raemond M70

# Raemond M70 11-inch Android 16 Tablet User Manual

Model: M70 | Brand: Raemond

## 1. INTRODUCTION

This manual provides essential information for operating your Raemond M70 11-inch Android 16 Tablet. It covers setup, features, usage, and maintenance to ensure optimal performance and user experience. The tablet is powered by Android 16 OS with integrated Gemini AI, offering advanced computing capabilities.



Figure 1: Raemond M70 11-inch Android 16 Tablet.

## 2. WHAT'S IN THE BOX

Your Raemond M70 Tablet package includes the following items:

- Tablet M70
- Keyboard
- Protective Case
- Mouse & Stylus
- Charger & Cable

# Built-in Gemini AI

Easier work & Life

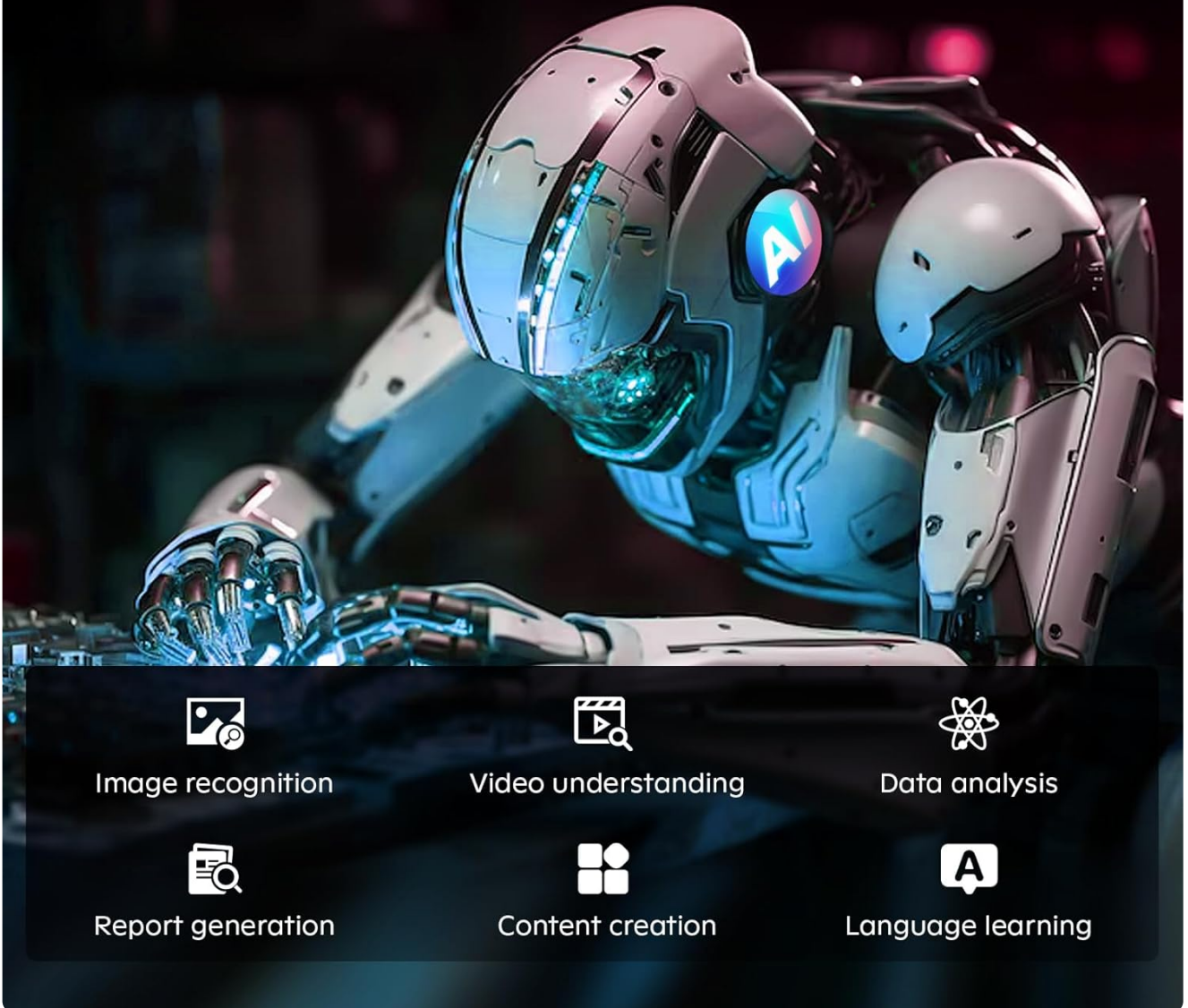


Figure 2: Included accessories with the Raemond M70 Tablet.

### 3. PRODUCT OVERVIEW & KEY FEATURES

The Raemond M70 tablet is designed for enhanced performance and user experience. Below are its primary features:

- **Operating System:** Android 16 with Gemini AI integration for intelligent assistance.
- **Display:** 11-inch 1920x1200 IPS FHD Display with a 90Hz refresh rate for vibrant visuals and smooth interaction.
- **Performance:** T7250 Octa-Core processor, 24GB RAM (8GB + 16GB expansion) for seamless multitasking.
- **Storage:** 256GB ROM, expandable up to 2TB via TF card.
- **Cameras:** 16MP rear camera with autofocus and LED flash, 8MP front camera for high-definition video calls.
- **Battery:** 8000mAh battery providing extended usage times.
- **Connectivity:** Dual-band 2.4G/5G WiFi, Bluetooth 5.2, GPS/Beidou/GLONASS/Galileo A-GPS.
- **Security:** Face ID facial recognition.
- **Audio:** Stereo-enhanced dual speakers (1.0W, 1217 BOX, 770Hz).

- **Multimedia:** Widevine L1 support for high-quality streaming.

## Raemond M70

### First with Android 16!

The smarter, faster tablet experience is here.

11" 90Hz

Gemini AI

Android 16

3.5MM Headphone Jack

5G WIFI

BT 5.2

Face ID

Unisoc T7250 Octa-core

Dual Box Speakers

8000mAh

**Widevine L1**



Figure 3: Overview of Android 16 features on the tablet.

## Built-in Gemini AI Easier work & Life

Data Analysis

Image Recognition

Video Understanding



**Gemini AI**

Content Creation

Report Generation

Language Learning

Figure 4: Gemini AI capabilities for enhanced productivity.

**24GB RAM**  
(8+16 Expansion)

**256GB ROM**  
High-speed storage

**Support up to 2TB**  
Micro SD expansion  
(Not included)




Figure 5: Memory and storage specifications.

## 4. SETUP

### 4.1 Initial Power On

1. Press and hold the power button located on the side of the tablet until the Raemond logo appears.
2. Follow the on-screen prompts to select your language, region, and connect to a Wi-Fi network.
3. Sign in with your Google account or create a new one.

### 4.2 Setting Up Screen Lock and Face Unlock

To enhance device security, set up a screen lock and Face Unlock:

1. Navigate to **Settings > Security and privacy**.
2. Tap on **Device unlock > Set a screen lock**.
3. Choose your preferred lock method (PIN, Pattern, or Password) and follow the instructions.
4. For Face Unlock, tap on **Face Unlock** and follow the on-screen guide to register your face.

Your browser does not support the video tag.

Video 1: Guide to setting up security and privacy settings, including screen lock and face unlock.

## 5. OPERATING INSTRUCTIONS

### 5.1 Split Screen with App Pairing

The Raemond M70 supports split-screen functionality, allowing you to use two apps simultaneously. App pairing enables quick access to frequently used app combinations.

1. Open the first app you wish to use.
2. Swipe up from the bottom of the screen to access recent apps.
3. Tap the app icon at the top of the first app's card and select 'Split screen'.
4. Choose a second app from your recent apps or app drawer to open it in the other half of the screen.
5. To create an app pair, simply drag the split-screen divider to adjust app sizes, then tap the 'Save app pair' icon (if available) or a similar option in the recent apps view.

Your browser does not support the video tag.

Video 2: Demonstration of Split Screen with App Pairing feature.

### 5.2 Three-Pointer Screenshot

Quickly capture screenshots using a three-finger gesture:

1. Ensure the 'Three pointer screenshot' feature is enabled in **Settings > System > Gestures**.
2. Place three fingers on the screen and swipe downwards simultaneously.
3. The screenshot will be captured and a preview will appear, allowing you to share or edit.

Your browser does not support the video tag.

Video 3: How to use the three-pointer screenshot gesture.

## 6. MAINTENANCE

### 6.1 Cleaning Your Tablet

- Use a soft, lint-free cloth to clean the screen and body of the tablet.
- For stubborn smudges, slightly dampen the cloth with water or a screen-safe cleaner.
- Avoid using harsh chemicals, abrasive materials, or excessive moisture.

### 6.2 Battery Care

- Charge your tablet using the provided charger and cable.
- Avoid exposing the tablet to extreme temperatures, as this can affect battery life.
- For optimal battery longevity, avoid fully discharging the battery frequently.

## 7. TROUBLESHOOTING

### 7.1 Common Issues and Solutions

- **Tablet not turning on:** Ensure the battery is charged. Connect the charger and wait a few minutes before attempting to power on again.
- **Screen unresponsive:** Try restarting the tablet by holding the power button for about 10-15 seconds until it reboots.
- **Apps crashing:** Clear the cache of the problematic app (Settings > Apps > [App Name] > Storage > Clear cache). If the issue persists, try reinstalling the app.
- **Slow performance:** Close unused apps, clear unnecessary files, or consider a factory reset if performance issues are severe and persistent (back up your data first).

## 8. SPECIFICATIONS

Feature	Detail
Brand	RaemonD
Model Name	M70
Operating System	Android 16
Processor	Unisoc T7250 Octa-Core (1.8 GHz)
RAM	24 GB (8GB + 16GB Expansion)
Internal Storage (ROM)	256 GB
Expandable Storage	Up to 2 TB (via TF card)
Screen Size	11 Inches
Display Resolution	1920x1200 Pixels (IPS FHD)
Refresh Rate	90 Hz
Rear Camera	16 MP (Autofocus, LED Flash)
Front Camera	8 MP
Battery Capacity	8000 mAh (Lithium Ion)
Connectivity	Wi-Fi (2.4G/5G), Bluetooth, GPS/Beidou/GLONASS/Galileo A-GPS
Interface	USB Type C, 3.5 mm Headphones Jack
Security Features	Face ID
Special Features	Gemini AI, Widevine L1
Item Weight	526 Grams
Dimensions (L x W x Th)	10.2"L x 6.7"W x 0.33"Th

## 9. WARRANTY & SUPPORT

### 9.1 Product Warranty

The RaemonD M70 Tablet comes with a **2-year limited warranty**. This warranty covers manufacturing defects and ensures spare part availability for 2 years within the EU.

### 9.2 Customer Support

For any inquiries or technical assistance, please refer to the contact information provided in your warranty card or visit the official RaemonD support website.

