

## PROYAMA PCS68

# PROYAMA PCS68 Gas Powered Chainsaw Instruction Manual

Model: PCS68 | 68CC 2-Cycle Engine | 20 & 24 Inch Guide Bars

## 1. INTRODUCTION

---

This manual provides essential information for the safe and efficient operation, assembly, and maintenance of your PROYAMA PCS68 Gas Powered Chainsaw. Please read and understand all instructions before operating the chainsaw. Proper use and maintenance will ensure optimal performance and extend the life of your tool.

The PROYAMA PCS68 features a powerful 68CC 2-cycle engine, delivering 4.5HP for demanding cutting tasks. It includes both 20-inch and 24-inch guide bars, offering versatility for various applications from pruning to felling medium-sized trees. Key features include EasyStart Technology for quick ignition, anti-vibration handles for reduced fatigue, and an efficient air injection filter system.

## 2. SAFETY INFORMATION

---

Operating a chainsaw can be dangerous if proper safety precautions are not followed. Always prioritize your safety and the safety of those around you.

- **Personal Protective Equipment (PPE):** Always wear a safety helmet, eye protection (goggles or face shield), hearing protection (earmuffs or earplugs), heavy-duty gloves, chainsaw protective chaps, and sturdy, non-slip footwear.
- **Work Area:** Ensure the work area is clear of bystanders, especially children and pets. Maintain a safe distance from other people and objects.
- **Inspection:** Before each use, inspect the chainsaw for any damaged parts, loose fasteners, or fuel leaks. Ensure the chain is sharp and properly tensioned.
- **Fuel Handling:** Mix and refuel in a well-ventilated area, away from ignition sources. Do not smoke while refueling. Wipe up any spilled fuel immediately.
- **Starting:** Always start the chainsaw on a firm, flat surface. Ensure the chain brake is engaged before starting.
- **Operation:** Maintain a firm grip with both hands. Be aware of kickback potential. Never operate the chainsaw above shoulder height. Avoid cutting near power lines.
- **Maintenance:** Disconnect the spark plug wire before performing any maintenance or adjustments.

## 3. WHAT'S IN THE BOX

---

Your PROYAMA PCS68 Gas Powered Chainsaw package includes the following components:

- 68CC Powerful Main Unit
- 20-inch Bar & Chain
- 24-inch Bar & Chain
- Bar Cover
- Face Shield
- Ear Defenders
- Protective Gloves
- Fuel Mixing Bottle
- 2 x Gaskets
- Installation Tools
- File
- Packaging Box



Image: All components included in the PROYAMA PCS68 Gas Powered Chainsaw package, laid out for inspection.

## Unboxing Video

Your browser does not support the video tag.

Video: A detailed unboxing of the PROYAMA 68CC Gas Chainsaw, showing all included parts and accessories.

## 4. ASSEMBLY INSTRUCTIONS

---

Follow these steps to properly assemble your chainsaw. Ensure all parts are securely fastened before use.

1. **Install Bumper Spike:** Secure the bumper spike to the chainsaw body using the provided screws.
2. **Install Gasket:** Place the gasket onto the chainsaw body, ensuring it aligns with the mounting points.
3. **Slide Guide Bar:** Slide the guide bar onto the bar bolts until it stops against the clutch drum sprocket.
4. **Place Chain:** Place the chain over and behind the clutch drum, fitting the drive links into the clutch drum sprocket. Ensure the bottom of the drive links fit between the teeth in the sprocket at the nose of the guide bar and into the bar groove.
5. **Adjust Chain Tension:** Pull the guide bar forward until the chain is snug in the guide bar groove. Ensure all drive links are in the bar groove.
6. **Install Sprocket Guard:** Install the sprocket guard over the guide bar studs. Ensure the chain tension adjuster pin fits into the guide bar adjuster hole and the brake band is positioned around the clutch drum. If it doesn't fit, adjust the position of the pin by rotating the tension screw.

7. **Tighten Sprocket Guard Nuts:** Finger-tighten the sprocket guard nuts. Hold the bar nose up and turn the adjuster screw clockwise until the chain contacts the underside of the bar. While lifting the tip of the guide bar, tighten the bar nuts securely with the bar tool. Use the screwdriver end of the bar tool to move the chain around the guide bar. If the chain does not rotate, it is too tight; adjust chain tension again.

## Assembly Video

Your browser does not support the video tag.

Video: Step-by-step guide on how to assemble the PROYAMA Gas Chainsaw, including bar and chain installation.

## 5. FUEL AND OIL MIXING

Your PROYAMA PCS68 chainsaw uses a 2-cycle engine and requires a specific fuel mixture. Always use fresh, unleaded gasoline mixed with high-quality 2-cycle engine oil at a **40:1 ratio** (40 parts gasoline to 1 part oil).

- Use the provided fuel mixing bottle for accurate measurements.
- Pour the correct amount of 2-cycle oil into the mixing bottle first, then add gasoline up to the indicated mark for the 40:1 ratio.
- Securely close the bottle and shake well to ensure thorough mixing.
- Fill the chainsaw's fuel tank with this mixture.
- Fill the separate oil tank with bar and chain oil for lubrication. Never use the saw without chain lubrication.

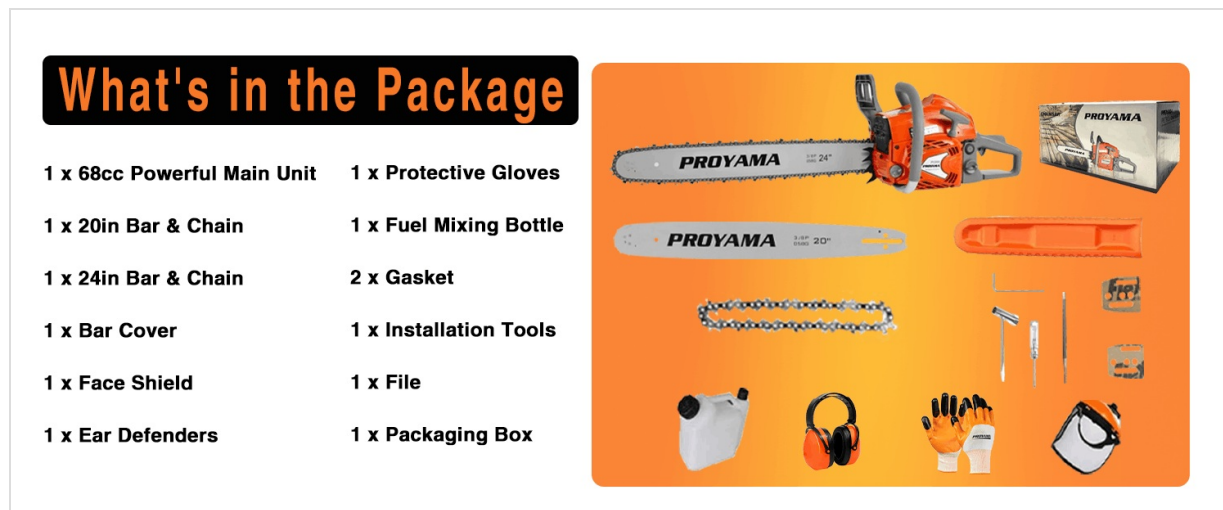


Image: A user demonstrating the proper mixing of gasoline and 2-cycle oil for the chainsaw.

## 6. STARTING THE CHAINSAW

Follow these steps for a reliable cold start. Always ensure the chain brake is engaged before attempting to start the engine.

1. **Engage Chain Brake:** Move the chain brake lever fully FORWARD to LOCK the chain brake before starting.
2. **Prime Fuel:** Push the primer bulb at least 3-5 times, or until the bulb is full of fuel.
3. **Turn On Ignition:** Move the ON/OFF switch up to the ON position.
4. **Pull Choke:** Pull the choke knob out until a "click" is heard.
5. **Pull Starter Rope (First Pops):** Pull the starter rope slowly for 10-15 cm until you feel some resistance. Then, pull the starter handle firmly and rapidly several times until the engine first "pops" (attempts to start). Do not pull over 10 times to avoid flooding.
6. **Release Choke:** Depress the throttle trigger to release the choke to the RUN position automatically.

**IMPORTANT:** Do not push the choke in manually. The choke will automatically return to the run position when the throttle safety lock and trigger are pressed.

7. **Pull Starter Rope (Engine Start):** Pull the starter rope rapidly 1-4 times to start the engine.

8. **Disengage Chain Brake:** Carefully disengage the chain brake. The chainsaw is now ready for use.

If the engine does not start, repeat the starting procedure from step 2-7.

## PRODUCT FEATURES

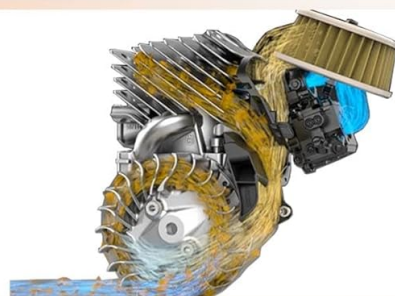


### **PURGE BULB**

*Make the product easier to start with fewer pulls.*

### **AIR INJECTION FILTERS**

*The air injection feature on the chainsaw filters 97% of incoming sawdust, girt and dirt to reduce the amount of air filter cleanings and ensure high performance at all times.*



### **QUICK - RELEASE AIR FILTER**

*Easily remove and replace the filter after cleaning.*

Image: Visual guide on depressing the throttle trigger to automatically release the choke to the RUN position.

### **Starting Procedure Video**

Your browser does not support the video tag.

Video: Official PROYAMA guide on how to start the gas powered chainsaw, covering fuel priming, choke operation, and pull-starting.

## **7. OPERATING THE CHAINSAW**

Once the chainsaw is started and the chain brake is disengaged, you can begin operation. Always maintain a secure grip and proper footing.

- **Two-Handed Grip:** Always hold the chainsaw firmly with both hands, one on the front handle and one on the rear handle.
- **Body Position:** Maintain a balanced stance with your feet apart. Keep the chainsaw close to your body for

better control.

- **Cutting Technique:** Allow the chainsaw to do the work. Do not force the saw through the wood. Use the full length of the guide bar when appropriate.
- **Avoid Kickback:** Be aware of the kickback zone at the tip of the guide bar. Avoid cutting with this area. If kickback occurs, maintain a firm grip and be prepared to react.
- **Limbing and Bucking:** Plan your cuts carefully, especially when limbing or bucking logs. Be aware of tension and compression in the wood to prevent pinching the bar or unexpected movement of the log.



Image: A user demonstrating the cutting capability of the PROYAMA chainsaw on a large log.

## Operation Videos

Your browser does not support the video tag.

Video: An outdoor test of the PROYAMA 68CC Gas Chainsaw, showcasing its performance in real-world cutting scenarios.

Your browser does not support the video tag.

Video: Demonstrates fast and effortless cutting with the PROYAMA 68CC Chainsaw on various wood types.

## 8. MAINTENANCE

---

Regular maintenance is crucial for the longevity and safe operation of your chainsaw. Always ensure the engine is off and the spark plug wire is disconnected before performing any maintenance.

- **Air Filter:** The chainsaw features an air injection system that filters 97% of incoming sawdust and dirt. Regularly inspect and clean the air filter to ensure high performance. The quick-release air filter allows for easy removal and replacement after cleaning.
- **Chain Sharpening:** Keep the chain sharp for efficient and safe cutting. Use the provided file or consult a professional for sharpening.
- **Bar Lubrication:** Ensure the bar and chain oil reservoir is always filled during operation to prevent excessive wear on the guide bar and chain.
- **Spark Plug:** Inspect and clean the spark plug periodically. Replace if worn or fouled.
- **General Cleaning:** Keep the chainsaw clean from sawdust, debris, and oil residue.

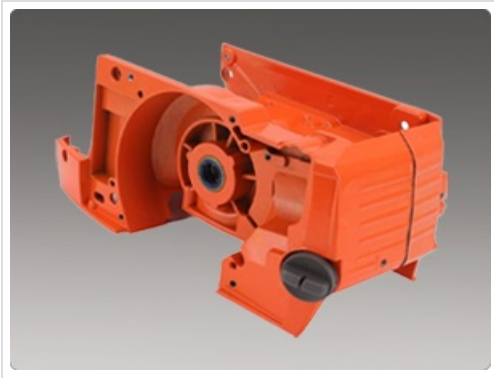


Image: Illustration of the air injection filter system, highlighting its function in keeping the engine clean.



Image: Close-up view of the quick-release air filter for easy maintenance.

## 9. TROUBLESHOOTING

---

If you encounter issues with your chainsaw, refer to the following common troubleshooting tips:

- **Engine Not Starting:**

- Check fuel level and ensure correct fuel/oil mixture.
- Verify the ON/OFF switch is in the ON position.
- Ensure the choke is properly engaged for a cold start, or disengaged for a warm start.
- Check the spark plug for fouling or damage. Clean or replace if necessary.
- Ensure the primer bulb is full of fuel.

- **Loss of Power:**

- Clean or replace the air filter.
- Check for a dull or damaged chain. Sharpen or replace.
- Inspect the spark plug.

- **Chain Not Moving:**

- Ensure the chain brake is disengaged.
- Check for proper chain tension.
- Inspect the guide bar for damage or debris.

- **Excessive Vibration:**

- Check for a loose chain or guide bar.
- Inspect the chain for damaged or missing cutters.

## 10. SPECIFICATIONS

---

Specification	Value
Brand	PROYAMA
Model Number	PR-GPCS-GP
Power Source	Gas Powered
Engine Displacement	68CC
Horsepower	4.5 Horsepower
Guide Bar Lengths	20 inch & 24 inch
Product Dimensions (L x W x H)	41"L x 9.4"W x 11.4"H
Item Weight	25.4 lbs (approximate, main unit)
Fuel Mix Ratio	40:1 (Gasoline:2-Cycle Oil)
UPC	684514446402

## 11. WARRANTY AND SUPPORT

For warranty information, technical support, or to purchase genuine replacement parts and accessories, please contact PROYAMA directly through their official channels.

- **Contacting Seller:** If you purchased your product through Amazon, you can reach the seller by navigating to your Amazon account, clicking "Your orders," finding the order ID for your PROYAMA PCS68 Chainsaw, and then clicking "Contact seller." The PROYAMA expert team aims to provide professional assistance within 12 hours.
- **PROYAMA Brand Store:** Explore the official [PROYAMA Brand Store](#) for additional products and information.

**PROYAMA** ✓ Reach us Via AMAZON

**REACH US:**

Your amazon account → click "Your orders" → find the order ID → click "Contact seller"

Our expert team will provide professional assistance for your needs within 12 hours

Genuine Parts & Accessories Needed  
Shop on PROYAMA AMAZON Store

Image: Visual guide on how to contact PROYAMA customer support through Amazon.