

## VEVOR S181

# VEVOR S181 Weighted Digital Piano User Manual

Model: S181

## 1. INTRODUCTION

---

This manual provides essential information for the proper setup, operation, and maintenance of your VEVOR S181 Weighted Digital Piano. Please read this manual thoroughly before using the instrument to ensure optimal performance and longevity. The VEVOR S181 features an 88-key fully weighted keyboard, a French DREAM sound engine, and versatile connectivity options, designed for both beginners and experienced players.

## 2. SAFETY INFORMATION

---

- **Power Supply:** Use only the specified power adapter. Ensure the voltage matches your local power supply.
- **Placement:** Place the piano on a stable, level surface. Avoid locations with extreme temperatures, humidity, direct sunlight, or excessive dust.
- **Water and Moisture:** Keep the instrument away from water or any liquids. Do not operate with wet hands.
- **Cleaning:** Disconnect the power before cleaning. Use a soft, dry cloth. Do not use liquid cleaners or sprays.
- **Ventilation:** Do not block ventilation openings.
- **Children:** Keep small parts and packaging materials away from children to prevent choking hazards.
- **Servicing:** Do not attempt to repair the instrument yourself. Refer all servicing to qualified personnel.

## 3. PACKAGE CONTENTS

---

Verify that all items listed below are included in your package:

- VEVOR S181 Digital Piano Unit
- Furniture Stand Components
- Triple Pedal Unit
- 1 x MIDI Cable
- 1 x DC Adapter & Power Cable
- 1 x Sheet Music Clip

- 1 x Piano Stickers
- 1 x Piano Cover
- User Manual (this document)



Figure 3.1: Included accessories and piano dimensions.

## 4. PRODUCT OVERVIEW

---

The VEVOR S181 Digital Piano is designed to provide a realistic playing experience with advanced features. It includes a full-size 88-key fully weighted keyboard with hammer action and 3-level touch sensitivity, simulating the feel of an acoustic piano. The instrument is equipped with a French DREAM sound engine and a dual speaker system for rich, high-fidelity audio.

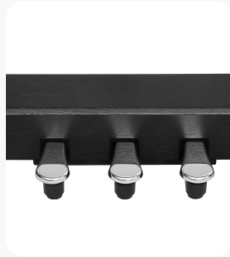


Figure 4.1: VEVOR S181 Digital Piano with stand and pedals.



Figure 4.2: Demonstrating the 88-key fully weighted keyboard with 3-level touch response.

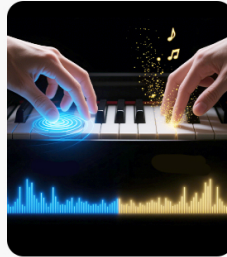
## Thoughtful Features Bring Note to Life



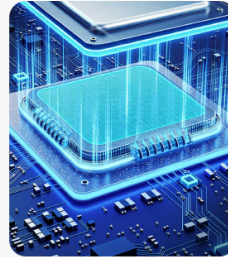
**Sustain Pedals**  
Add depth and emotion to every note



**Dual Speakers**  
Full, immersive stereo sound



**Dual-Tone Setting**  
Blend two voices for unique effects



**French DREAM Sound Engine**  
Advanced tech for natural, authentic tones



**Volume Control**  
Adjust sound to fit any space

Figure 4.3: Key features including sustain pedals, dual speakers, and the French DREAM sound engine.

## 5. SETUP INSTRUCTIONS

### 5.1 Assembly of the Furniture Stand

1. Unpack all components of the furniture stand and the piano unit.
2. Follow the included assembly diagram to connect the side panels, crossbars, and pedal unit to form the stand structure. Ensure all screws are securely tightened.
3. Carefully place the VEVOR S181 Digital Piano unit onto the assembled stand, aligning it with the mounting points. Secure the piano to the stand using the provided fasteners.

### 5.2 Initial Connections

1. **Pedal Connection:** Connect the triple pedal unit cable to the designated 3-Pedal Port on the rear of the piano.
2. **Power Connection:** Connect the DC Adapter to the DC 12V Power Input port on the rear of the piano. Plug the power adapter into a suitable wall outlet.
3. **Key Protection:** Before first use, gently peel off any protective tape or film from the piano keys.

# Play Together Make Practice Fun

Boost coordination & rhythm skills



**260**  
Rhythms



**280**  
Tones



**110**  
Demo Songs



**Before Use:**  
Peel off the key  
protection tape

• Bench Not Included

Figure 5.1: Reminder to peel off key protection tape before use.

## 6. OPERATING INSTRUCTIONS

### 6.1 Power On/Off

Press the Power button located on the control panel to turn the piano on or off. The digital display will illuminate upon power-up.

### 6.2 Selecting Tones, Rhythms, and Demo Songs

Use the dedicated buttons and the digital display on the control panel to navigate and select from 280 tones, 260 rhythms, and 110 demo songs. Refer to the on-screen prompts for specific selection procedures.

## Rich Functions

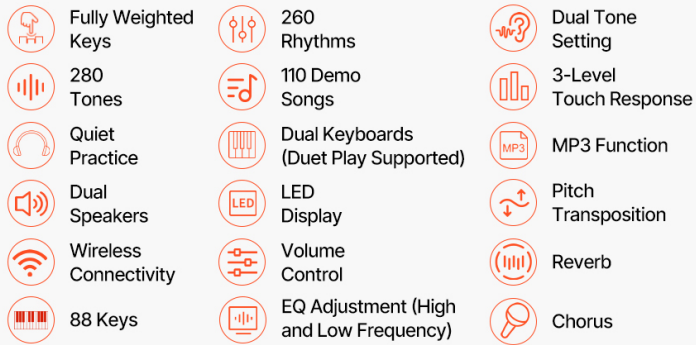


Figure 6.1: Overview of available tones, rhythms, and demo songs.

### 6.3 Touch Sensitivity

The piano features 3-level touch sensitivity, allowing you to adjust how the piano responds to your playing dynamics. Consult the manual's specific section on touch sensitivity settings for adjustment instructions.

### 6.4 Recording Function

The built-in recording function allows you to capture your performances. Press the 'Record' button (if available, or follow display prompts) to start and stop recording. Playback options are also available.

### 6.5 Dual Keyboard Mode

Activate Dual Keyboard Mode to split the keyboard into two identical ranges, ideal for teacher-student interaction or duet playing. Refer to the specific instructions for enabling and configuring this mode.

### 6.6 Wireless Connectivity

The VEVOR S181 supports wireless connectivity for integration with various apps and devices. Activate Bluetooth on the piano and your device, then pair them. This enables smart learning experiences and expanded functionality.

# Smart Learning Made Easy



Figure 6.2: Smart learning features with recording and wireless connectivity.

## 7. CONNECTIVITY

The VEVOR S181 offers multiple ports for connecting external devices:

- **3-Pedal Port:** For connecting the included triple pedal unit.
- **USB-MIDI Port:** Connect to a computer or other MIDI devices for recording, sequencing, or using music software.
- **3.5 mm Sustain Pedal Port:** For an optional external sustain pedal.
- **3.5 mm Audio Output:** Connect to external amplifiers, speakers, or recording equipment.
- **3.5 mm Headphone Jack:** For private practice. Connecting headphones will mute the internal speakers.

- **DC 12V Power Input:** For the power adapter.



Figure 7.1: Rear panel connectivity ports.

## 8. MAINTENANCE

- **Cleaning:** Wipe the piano's surface with a soft, dry, lint-free cloth. For stubborn dirt, slightly dampen the cloth with water and mild soap, then wipe dry immediately. Avoid abrasive cleaners.
- **Key Care:** Keep the keys clean. If they become dirty, wipe them with a soft cloth.
- **Storage:** When not in use for extended periods, cover the piano with the provided piano cover to protect it from dust. Store in a cool, dry place.
- **Transportation:** When moving the piano, ensure it is properly disassembled from the stand and handled carefully to prevent damage.

## 9. TROUBLESHOOTING

---

- **No Power:** Ensure the power adapter is securely connected to both the piano and a working power outlet. Check if the power button is pressed.
- **No Sound:** Check the volume level. Ensure headphones are not plugged in, as this mutes the internal speakers. Verify external speakers/amplifiers are correctly connected and powered on if used.
- **Keys Not Responding:** Ensure no foreign objects are lodged between the keys. If the issue persists, contact customer support.
- **Wireless Connection Issues:** Ensure Bluetooth is enabled on both the piano and your device. Try restarting both devices and re-pairing.
- **Pedal Not Working:** Check the pedal cable connection to the piano. Ensure the pedal unit is correctly assembled.

## 10. SPECIFICATIONS

---

<b>Model Number</b>	S181
<b>Number of Keys</b>	88
<b>Keyboard Type</b>	Fully Weighted, Hammer Action
<b>Touch Sensitivity</b>	3-Level
<b>Tones</b>	280
<b>Rhythms</b>	260
<b>Demo Songs</b>	110
<b>Recording Function</b>	Built-in
<b>Wireless Connection</b>	Supported
<b>Item Weight</b>	50.7 lbs (23.0 kg)
<b>Product Dimensions (with Sheet Music Stand)</b>	51.6 x 11.8 x 33.5 inches (1310 x 300 x 850 mm)
<b>UPC</b>	197988708179

## 11. WARRANTY AND SUPPORT

---

For warranty information, technical support, or service inquiries, please refer to the warranty card included with your product or visit the official VEVOR website. Please have your model number (S181) and purchase date available when contacting support.