

## pTron Basspods P11

# pTron Basspods P11 TWS Earbuds User Manual

Model: Basspods P11

## INTRODUCTION

Thank you for choosing the pTron Basspods P11 TWS Earbuds. These earbuds are designed to provide a seamless audio experience with advanced features like Bluetooth v5.1 connectivity, touch controls, and dedicated audio modes. This manual will guide you through the setup, operation, and maintenance of your new earbuds to ensure optimal performance and longevity.

## WHAT'S IN THE BOX

- pTron Basspods P11 TWS Earbuds
- Charging Case
- USB Type-C Charging Cable
- Additional Eartips (various sizes)
- User Manual

## PRODUCT OVERVIEW

The pTron Basspods P11 earbuds are engineered for comfort and high-quality sound. Each earbud weighs approximately 4 grams, providing a lightweight and snug fit for extended wear. They feature 10mm dynamic drivers for immersive audio and are equipped with passive noise cancellation.

# Full Music Around All-day Long

24 Hours Playtime with Case



Image: The pTron Basspods P11 earbuds are designed for a snug and lightweight fit, with each bud weighing only 4 grams.

## Snug-fit & Lightweight TWS Earbuds

Each bud just Weighs 4gms

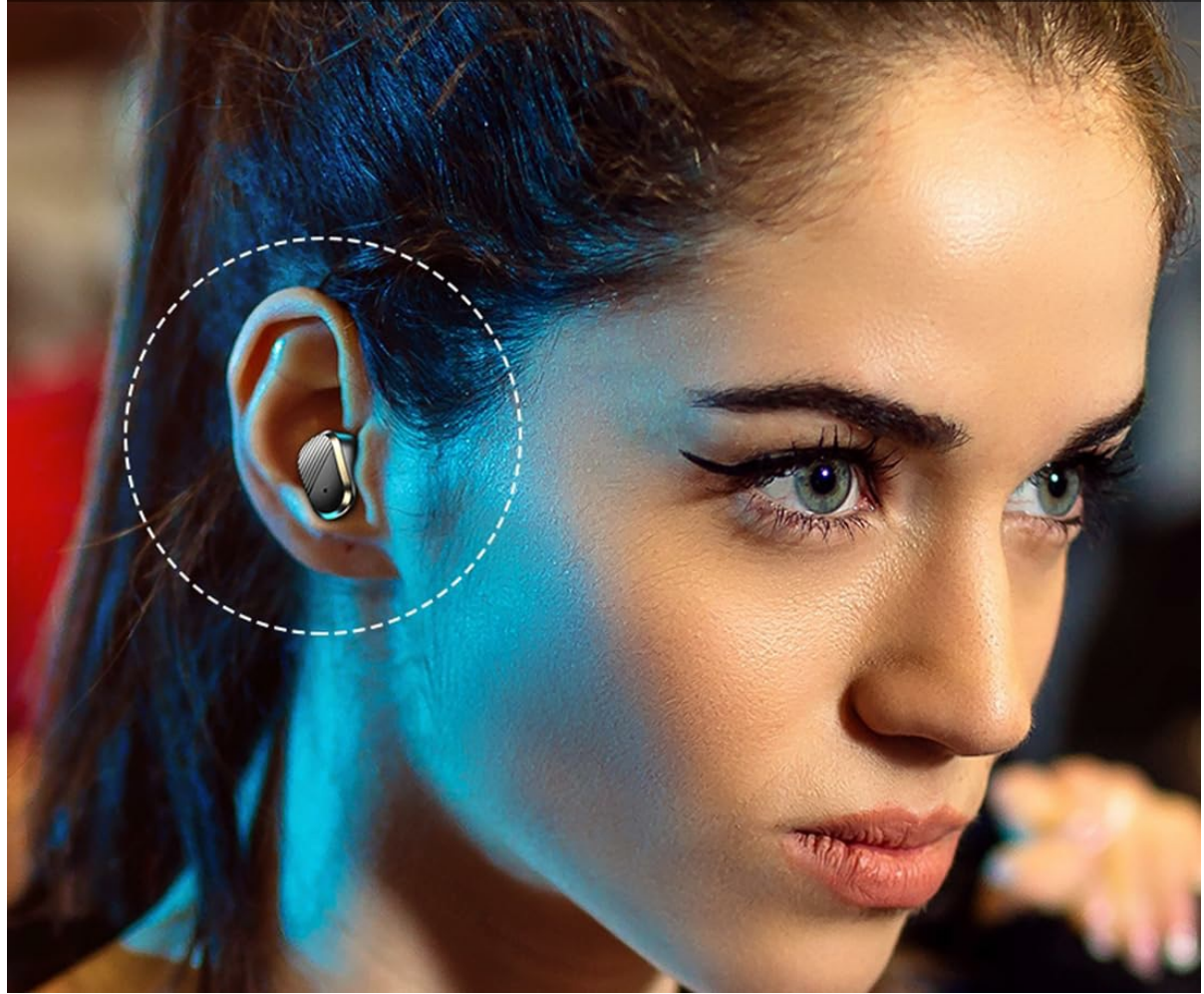


Image: An internal view of the pTron Basspods P11 earbud, illustrating the 10mm dynamic drivers responsible for immersive audio.

## SETUP

### 1. Charging the Earbuds and Case

Before first use, fully charge the earbuds and the charging case. Place the earbuds into the charging case. Connect the USB Type-C cable to the charging port on the case and the other end to a power source. The LED display on the case will indicate the charging status.

# Seamless Audio & Video Sync

## Built-in Movie & Music Mode



Image: The pTron Basspods P11 earbuds in their charging case, which features a digital display and provides up to 24 hours of total playtime.

## 2. Pairing with a Device

1. Ensure the earbuds are charged and removed from the charging case. They will automatically enter pairing mode.
2. On your smartphone, tablet, or laptop, enable Bluetooth.
3. Search for available devices and select "pTron TWS" from the list.
4. Once connected, you will hear a confirmation tone, and the earbuds will be ready for use.

The earbuds support 1-step pairing and auto-reconnect with previously paired devices.



# Simply Touch the Buds

## Manage Music, Calls & Voice Assistant



Image: A visual representation of the quick and easy Bluetooth 5.1 pairing process for the pTron Basspods P11 with a smartphone.

## OPERATING THE EARBUDS

### Touch Controls

The pTron Basspods P11 feature precise touch controls on each earbud for managing various functions:

- **Play/Pause Music:** Single tap on either earbud.
- **Next Track:** Double tap on the right earbud.
- **Previous Track:** Double tap on the left earbud.
- **Answer/End Call:** Single tap on either earbud.
- **Reject Call:** Long press on either earbud.
- **Activate Voice Assistant:** Triple tap on either earbud.

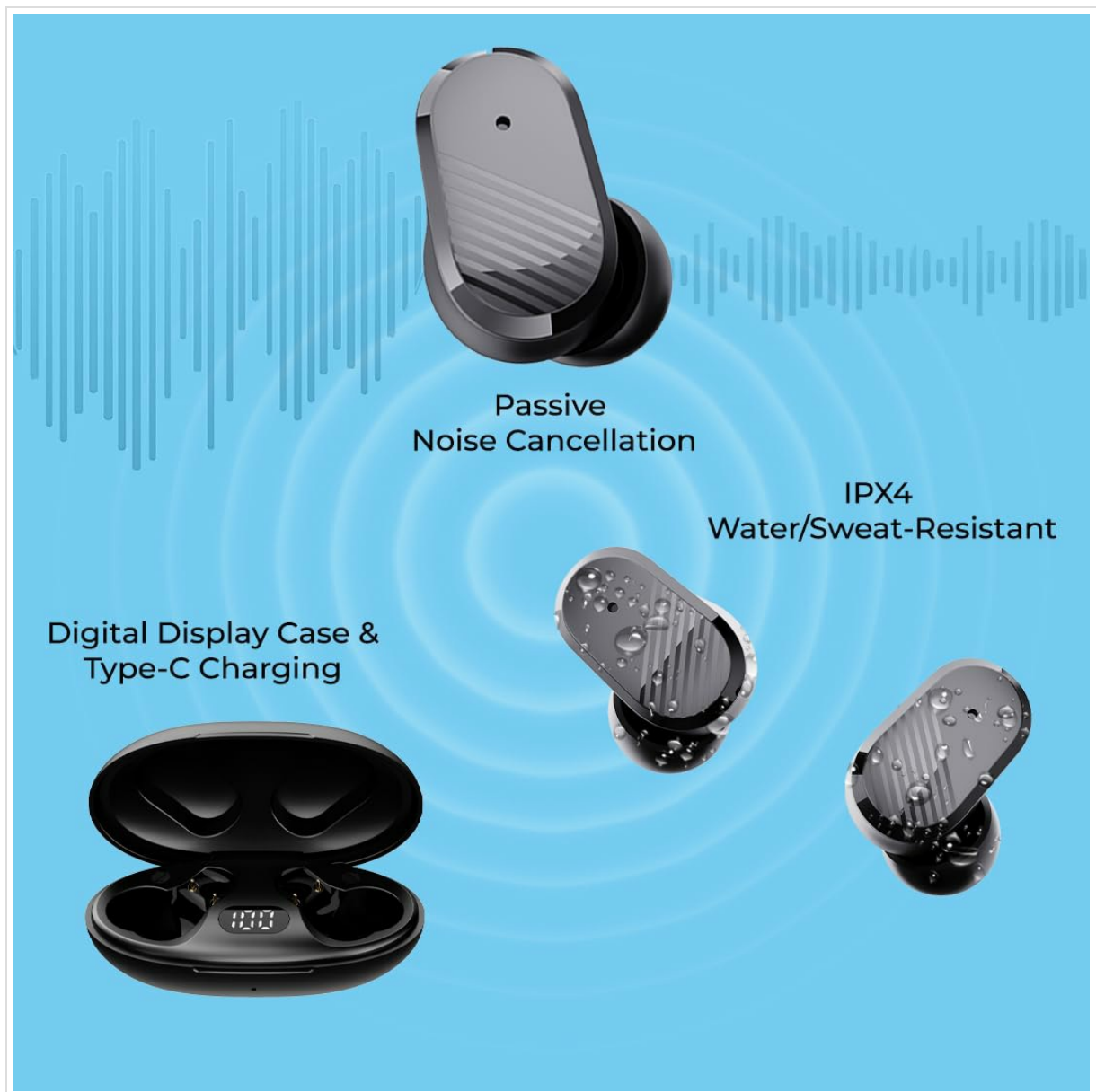


Image: An illustration of the touch control functions on the pTron Basspods P11 earbuds, including managing music, calls, and activating voice assistants.

## Movie & Music Modes

The earbuds offer dedicated modes for optimized audio experience:

- **Music Mode:** Provides rich, immersive stereo sound with deep bass and crisp treble.
- **Movie Mode:** Reduces audio latency for a synchronized audio and video experience, ideal for watching films or gaming.

Refer to the quick start guide included in the box for specific gestures to switch between these modes.

# Super Quick & Easy Pairing

BT5.1 | Stable Connectivity | Wide Compatibility



Image: The pTron Basspods P11 earbuds and charging case positioned near a smartphone displaying a video, demonstrating the seamless audio and video synchronization provided by the built-in Movie and Music modes.

## MAINTENANCE

To ensure the longevity and optimal performance of your pTron Basspods P11 earbuds, follow these maintenance guidelines:

- **Cleaning:** Regularly clean the earbuds and charging case with a soft, dry cloth. Avoid using harsh chemicals or abrasive materials.
- **Water Resistance:** The earbuds are IPX4 water-resistant, meaning they are protected against splashing water from any direction. They are suitable for workouts and light rain but should not be submerged in water.
- **Storage:** When not in use, store the earbuds in their charging case to protect them and keep them charged.
- **Temperature:** Avoid exposing the earbuds to extreme temperatures (hot or cold) or high humidity.

## 10mm Dynamic Drivers Ensure Immersive Audio Experience



Image: The pTron Basspods P11 earbuds and their charging case, showcasing key features such as Passive Noise Cancellation, IPX4 Water/Sweat-Resistance, and convenient Type-C Charging.

## TROUBLESHOOTING

---

If you encounter issues with your pTron Basspods P11 earbuds, try the following solutions:

- **No Sound:** Ensure the earbuds are charged, properly paired, and the volume on both the earbuds and your device is turned up.
- **Pairing Issues:** Turn off Bluetooth on your device, then turn it back on. Forget the device from your Bluetooth list and try pairing again. Ensure no other Bluetooth devices are interfering.
- **One Earbud Not Working:** Place both earbuds back into the charging case, close the lid, wait a few seconds, then take them out again. This often re-syncs them.
- **Charging Problems:** Check the charging cable and adapter. Ensure the charging contacts on the earbuds and inside the case are clean and free of debris.
- **Voice Assistant Not Responding:** Ensure your device's voice assistant is enabled and configured correctly.

## SPECIFICATIONS

---



Feature	Specification
Model Name	Basspods P11
Connectivity	Bluetooth v5.1
Wireless Range	10 Meters
Audio Driver Size	10mm Dynamic Drivers
Battery Life (with case)	Up to 24 Hours
Control Method	Touch Control
Water Resistance	IPX4 (Water Resistant)
Noise Control	Passive Noise Cancellation
Microphone	Dual HD Mic
Charging Port	USB Type-C
Earbud Weight	Approx. 4g per bud
Product Dimensions	6.9 x 3.4 x 2.6 cm (Charging Case)

## WARRANTY AND SUPPORT

The pTron Basspods P11 TWS Earbuds come with a **1-year manufacturer warranty** from the date of purchase, covering manufacturing defects only.

For warranty claims, technical support, or any product-related inquiries, please contact pTron customer care:

- **Phone:** 040-67138888
- **Email:** [Support@ptron.in](mailto:Support@ptron.in)

Please retain your purchase receipt as proof of purchase for warranty services.