

FLYDIGI Direwolf 4

FLYDIGI Direwolf 4 PC Controller Instruction Manual

INTRODUCTION

This manual provides detailed instructions for the setup, operation, and maintenance of your FLYDIGI Direwolf 4 PC Controller. Designed for multi-platform compatibility, this controller offers advanced features for an enhanced gaming experience across PC, Nintendo Switch, TV, and Android devices. Please read this manual thoroughly to ensure proper use and to maximize the performance of your device.

SETUP

1. Connection Modes

The FLYDIGI Direwolf 4 controller supports three connection modes:

- **Wired Connectivity:** Connect the controller directly to your device using a USB-C cable. This mode also charges the controller.
- **Bluetooth Connectivity:** For wireless connection to compatible devices.
- **2.4G Dongle Wireless Connectivity:** Use the included 2.4G dongle for a stable wireless connection, particularly recommended for PC.

2. Initial Pairing

Follow these general steps for initial pairing:

1. **Power On:** Press and hold the FLYDIGI logo button to power on the controller.
2. **Select Mode:** Use the mode switch on the controller to select the desired connection mode (Bluetooth or 2.4G).
3. **Pairing:**
 - **Bluetooth:** On your device, navigate to Bluetooth settings and select "FLYDIGI Direwolf 4" to pair.
 - **2.4G Dongle:** Insert the 2.4G dongle into a USB port on your device. The controller should automatically connect.
4. **Wired:** Simply connect the USB-C cable from the controller to your device. No pairing is required.

Universal Compatibility PC/NS/Mobile/TV

Tri-Mode Connectivity: USB-C / BT / 2.4GHz



PC



Black Myth: Wukong



Forza Horizon 5



Cyberpunk 2077



NS



The Legend of Zelda



Mario Kart 8



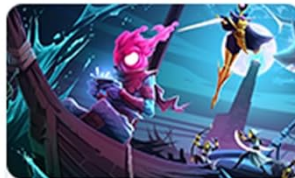
Hunter Rise



Android *
Mapping



Wuthering Waves



Dead Cells



Honkai Impact 3rd



iOS Native
Mode



Genshin Impact



Call of Duty: Mobile



Minecraft

*Only DIREWOLF 3 and 4 support Android mapping

Image: The FLYDIGI Direwolf 4 controller demonstrating its compatibility with various platforms including PC, Nintendo Switch, Android, and iOS, highlighting its versatile connectivity options.

OPERATING INSTRUCTIONS

1. FORCEFLEX Joysticks

The patented FORCEFLEX Joysticks allow for adjustable tension, ranging from 40gf to 80gf. This feature provides stable recentering and zero drift, ensuring precise control and durability for up to 5 million cycles. Adjust the tension to suit your preference for different game genres.

FORCEFLEX Joysticks

WIDE-RANGE TENSION



Image: An exploded diagram illustrating the internal mechanism of the FORCEFLEX Joystick, highlighting its adjustable tension ring and components designed for precise centering and durability.

2. FORCESWITCH Triggers 2.0

Switch between two trigger modes for optimal gameplay:

- **Micro Mode:** Provides a crisp, fast response ideal for shooting games.
- **Hall Effect Linear Mode:** Offers precise, gradual control, perfect for racing games and other genres requiring nuanced input.

One Controller With 2 Kinds Triggers



Image: The controller's triggers are depicted, illustrating the Micro-Switch Trigger for rapid input in a shooting game scenario and the Linear Trigger for fine-tuned control in a racing game.

3. Upgraded Stereo Vibration

Experience immersive feedback with realistic stereo vibration delivered through both grip areas of the controller.

Upgraded 2-Motor Stereo Vibration



Image: An internal view of the controller showing the placement of two vibration motors within the grips, designed to provide stereo haptic feedback.

4. Rotary Eight-Way D-Pad & Silent Buttons

The upgraded rotary-pivoted D-Pad facilitates easy execution of combos without misinputs. The soft-touch silicone ABXY buttons provide precise and quiet actuation.

1000Hz Wired/Wireless Report Rate

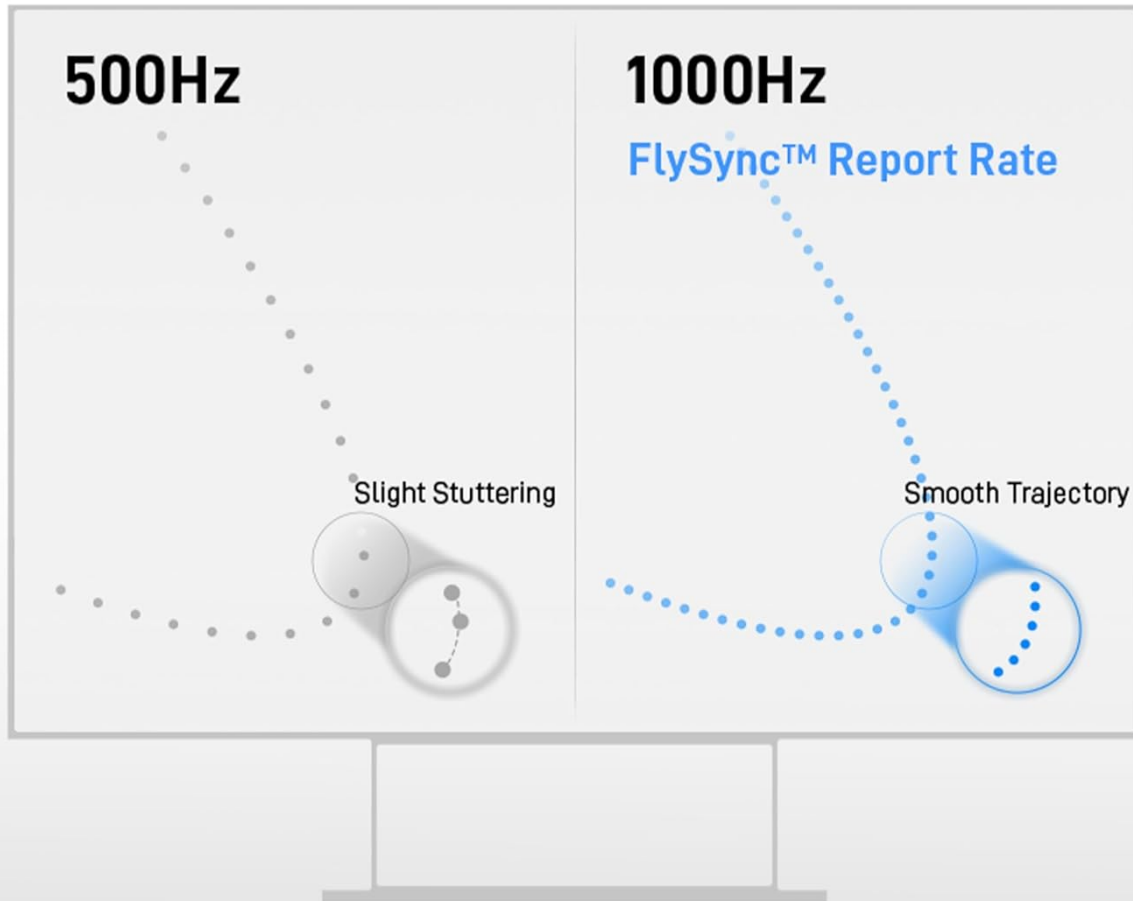


Image: A detailed exploded diagram of the Rotary-Pivoted D-Pad 2.0, illustrating its design for smooth, accurate directional input and combo execution.

5. 6-Axis Gyro & 1000Hz Polling Rate

Built with FLYDIGI's high polling rate technology, the controller offers a 1000Hz report rate for low-latency response and accurate motion sensing. The integrated 6-axis gyro is ideal for precise aiming and control in shooting or racing games.

Upgraded 6-Axis Gyro More Precise More Immersive



Image: The controller is shown in a first-person perspective within a game, illustrating how the 6-Axis Gyro provides accurate motion sensing for aiming.

**1000HZ WIRED/
WIRELESS REPORT RATE**

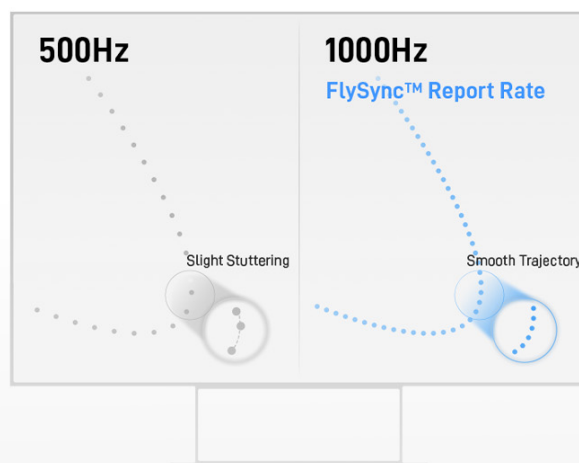


Image: A graphical representation comparing the trajectory smoothness between a 500Hz and a 1000Hz report rate, demonstrating the improved precision of the 1000Hz rate.

6. Macro-Programmable Rear Buttons

The controller features macro-programmable rear buttons for easier control and custom command execution. These can be configured using the FLYDIGI software.

Rotary-Pivoted D-Pad 2.0

Smooth Combos No Misinputs

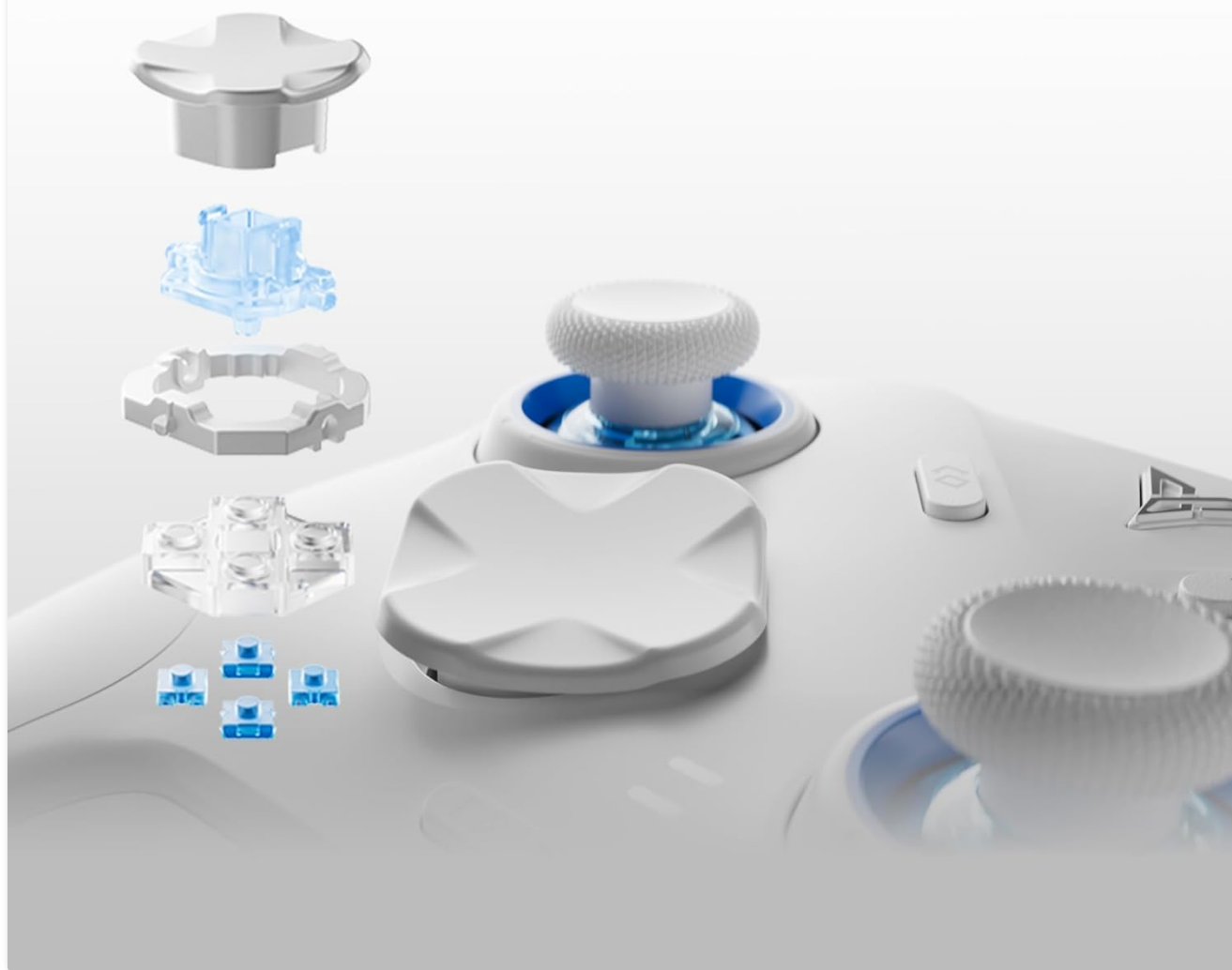


Image: The back of the controller is shown, emphasizing the placement of the macro-programmable buttons designed for customizable inputs during gameplay.

7. Software Support

While the controller can be used without additional software, installing the FLYDIGI software unlocks extensive customization options, including button remapping and creating game profiles. This software enhances the controller's functionality and allows for a personalized gaming experience.

MAINTENANCE

1. Battery Information

The controller includes 1 AAAA battery. For optimal battery life, ensure the controller is fully charged before first use and when not in use for extended periods. Charging can be done via wired connection or an optional Direwolf 4 exclusive charging dock (sold separately).

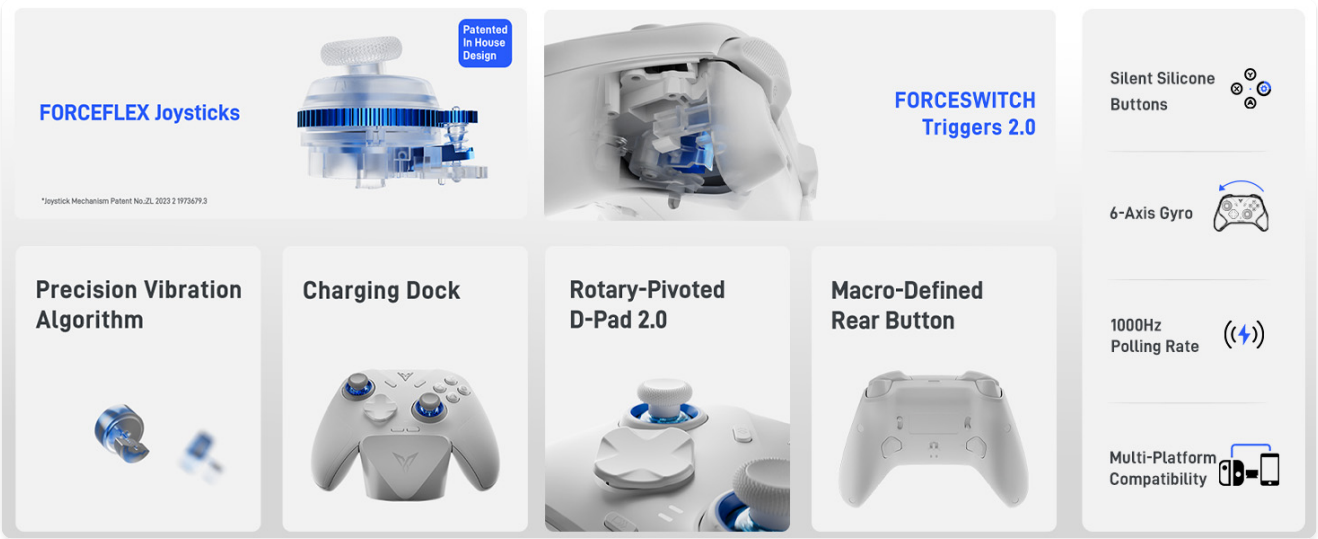


Image: The FLYDIGI Direwolf 4 controller resting on its dedicated charging dock, showcasing its stable and non-slip design, with intelligent charging features.

2. Cleaning and Storage

To clean the controller, use a soft, dry cloth. Avoid using harsh chemicals or abrasive materials. Store the controller in a cool, dry place away from direct sunlight and extreme temperatures to prevent damage.

TROUBLESHOOTING

If you encounter issues with your FLYDIGI Direwolf 4 controller, refer to the following common solutions:

- **Controller Not Connecting:** Ensure the controller is charged. Verify the correct connection mode (Wired, Bluetooth, 2.4G) is selected. For Bluetooth, ensure your device's Bluetooth is enabled and the controller is in pairing mode. For 2.4G, ensure the dongle is securely inserted.
- **Input Lag or Disconnections:** For wireless connections, ensure you are within range of your device/dongle and there is minimal interference from other wireless devices. Consider switching to a wired connection if issues persist.
- **Buttons or Joysticks Not Responding:** Check for physical obstructions. If using the FLYDIGI software, ensure no conflicting profiles are active. Try resetting the controller (refer to the FLYDIGI software or official support for specific reset procedures).
- **Vibration Not Working:** Ensure vibration is enabled in your game settings and the FLYDIGI software. Check if the controller's battery level is sufficient.
- **Software Not Recognizing Controller:** Ensure the FLYDIGI software is up-to-date. Connect the controller via wired mode to establish initial communication with the software.

SPECIFICATIONS

Feature	Detail
Model Number	Direwolf 4

Connectivity	Wired (USB-C), Bluetooth, 2.4G Wireless
Compatible Platforms	PC, Nintendo Switch, TV, Android, Laptop (NOT Support Xbox/PS)
Joysticks	FORCEFLEX Joysticks (40gf-80gf adjustable tension, zero drift)
Triggers	FORCESWITCH Triggers 2.0 (Micro Mode & Hall Effect Linear Mode)
Vibration	Upgraded Stereo Vibration
D-Pad	Rotary Eight-Way D-Pad
Buttons	Silent Silicone ABXY Buttons, Macro-Programmable Rear Buttons
Motion Sensing	6-Axis Gyro
Polling Rate	1000Hz
Battery	1 AAAA battery (included)
Item Weight	8.2 ounces
Manufacturer	Flydigi

WARRANTY AND SUPPORT

For warranty information, technical support, or further assistance with your FLYDIGI Direwolf 4 controller, please visit the official FLYDIGI website or contact their customer support directly. You can also find additional resources and product information on the [FLYDIGI Store on Amazon](#).

PRODUCT OVERVIEW VIDEO

Your browser does not support the video tag.

Video: An official overview of the FLYDIGI Direwolf 4 Wireless PC Controller, demonstrating its key features and functionalities.