

HITTIONA F2

HITTIONA 5-in-1 Hot Air Styler & Hair Dryer Brush

Model: F2

1. INTRODUCTION

The HITTIONA 5-in-1 Hot Air Styler & Hair Dryer Brush is a versatile styling tool designed to dry, volumize, curl, smooth, and straighten hair with reduced heat damage. This manual provides essential information for safe and effective use of your new hair styler.

2. SAFETY INFORMATION

For your safety, please observe the following precautions:

- Keep out of reach of children.
- Do not use while bathing or near water.
- Keep the power plug and cord away from heated surfaces.
- Unplug the device when not in use.

3. PRODUCT OVERVIEW

Your HITTIONA 5-in-1 Hot Air Styler comes with a main unit and several interchangeable attachments to achieve various hairstyles. It also includes accessories for convenience and protection.



Figure 1: HITTIONA 5-in-1 Hot Air Styler with main unit, various attachments, and travel bag.

Components:

- **Main Unit:** The core device with power and control buttons.
- **Fast Dry Hair Dryer Attachment:** For quick drying.
- **Volumizing Brush:** For adding volume and smoothing hair.
- **Round Brush:** For creating loose curls and additional volume.
- **1.25" Auto-Wrap Curlers (Left & Right):** Two barrels for automatic curling in different directions.
- **Heat-Resistant Glove:** For protection during styling.
- **Hair Clips:** For sectioning hair.
- **Travel Bag:** For convenient storage and portability.



Figure 2: The five interchangeable styling attachments.



Figure 3: Included travel bag for storage.

4. SETUP

Attaching and Detaching Attachments:

1. **To Install:** Align the arrow on the brush head with the arrow on the handle. Push the attachment firmly until you hear a "click," which means it is locked.
2. **To Disassemble:** Press the "unlock" button and pull out the brush head.



Figure 4: Visual guide for attachment installation and disassembly.

5. OPERATING INSTRUCTIONS

General Operation:

The main unit features controls for power, wind speed, and temperature settings. It also includes a cool shot button.



Figure 5: Control panel for wind speed, temperature, and cool shot function.

1. **Power On/Off & Wind Speed:** Use the dedicated button to turn the device on/off and select one of the three wind speed settings (Low, Medium, High).
2. **Temperature Settings:** Choose from three temperature levels (120°F, 150°F, 190°F) using the temperature button.
3. **Cool Shot Button:** Press and hold the snowflake button for a cool air blast to set your style and enhance shine.

Using the Fast Dry Hair Dryer Attachment:

Attach the hair dryer head to the main unit. Use this attachment to quickly dry your hair before styling or for a

smooth, frizz-free finish. The high-speed brushless motor and ionic technology help reduce heat damage and keep hair naturally smooth.

Q How to Achieve Long-lasting Curls?

A Preparation: Wash and dry hair until it's about 70% dry.

Curling Techniques:

1. Section Your Hair: Divide hair into small sections.
2. Wrap Method: Position one section of hair at the front of the barrel; it'll be drawn in automatically. Hold for 10s.
3. Cooling: Press the cool air button, wait 10 seconds to set the curl and enhance shine.
4. Styling Products: Use a flexible hairspray to hold curls.

Additional Tips:

Heat Settings: Highest Speed and Temperature will be best.
Setting Spray: Light setting spray to maintain your style last.

Figure 6: Fast drying with the hair dryer attachment.

Using the Volumizing Brush:

Attach the volumizing brush. This brush is ideal for adding lift and volume at the roots, as well as smoothing and de-frizzing hair without pulling or tangling. It is especially effective on freshly washed hair that is about 70% dry.

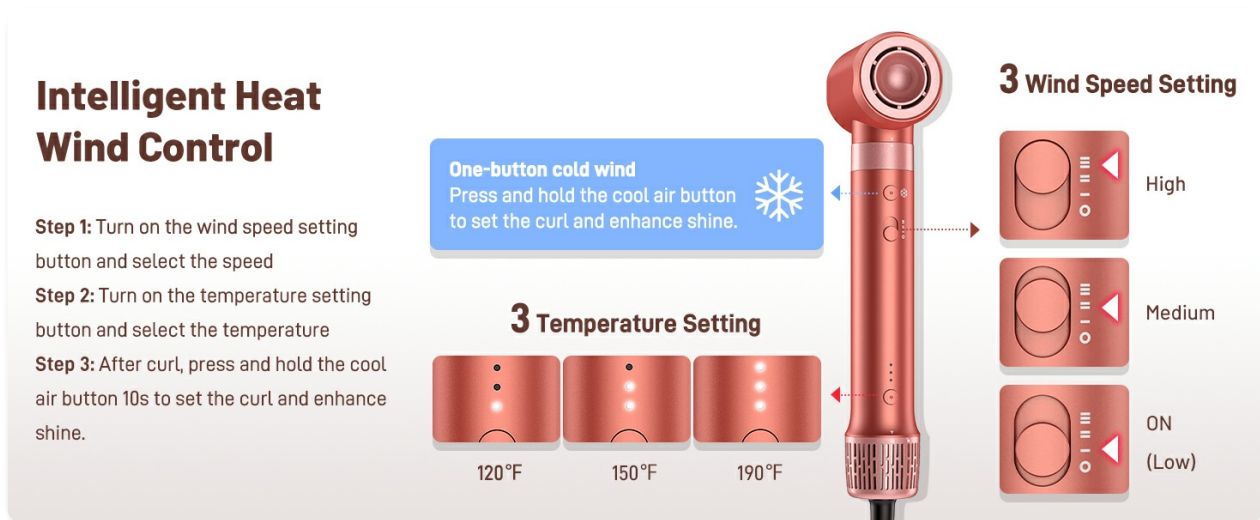


Figure 7: Achieve volume and smooth hair with the volumizing brush.

Faster Drying. No Frizz

30 million negative ions reduce heat damage
and keep your hair naturally smooth

Brushless Motor

110000 RPM

Airflow

23m/s



~30S

Short Hair



~2M 30S

Medium Hair



~4M

Long Hair

Figure 8: The volumizing brush helps create tangle-free, voluminous hair.

Your browser does not support the video tag. Please update your browser to view this content.

Video 1: Demonstration of the Ionic Blow Dryer Brush for Volumizing.

Using the Round Brush:

The round brush is designed for creating loose curls, adding volume, and styling bangs. It helps leave your hair smooth, frizz-free, and full of bounce.

Tangle-Free Volumiae Hair

Use the Large Round Volumizing Brush at the roots to create volume

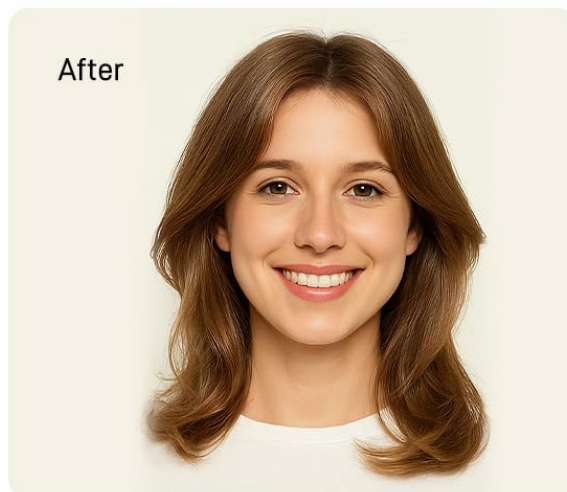
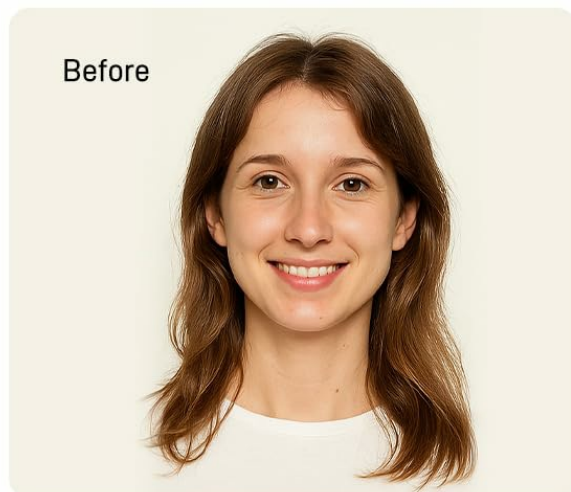


Figure 9: Creating loose curls and volume with the round brush.

Using the Auto-Wrap Curlers:

The 1.25" auto-wrap curlers utilize Coanda airflow to automatically wrap, curl, and set hair without extreme heat or clamping. Two barrels are provided: one for left-sided curls and one for right-sided curls. Ensure your hair is 80-90% dry for best results.



Figure 10: Auto-wrap curling mechanism using Coanda airflow.

How to Create Curls:

1. **Prep Your Hair:** Ensure hair is 80-90% dry. Divide hair into 1-inch sections.
2. **Start Curling:** Hold the middle of a 1-inch section of hair (let ends dangle). Bring the barrel behind the dangling ends. The air will automatically grip the bottom of your hair. Slowly slide it upwards to wrap the rest of the section along the barrel.
3. **Set & Release:** Hold for 10 seconds on the hot temperature, then press and hold the cool air button for 10 seconds to set the curl. Turn off the device and pull it straight down to release.



Figure 11: Detailed steps for using the auto-wrap curlers.

Tips for Long-lasting Curls:

- **Heat Settings:** Highest speed and temperature are recommended.
- **Styling Products:** Use a flexible hairspray to hold curls.
- **Cooling:** Always use the cool shot to set the curl.

Get a Quicker Routine Every Morning



Figure 12: Additional tips for durable curls.

Your browser does not support the video tag. Please update your browser to view this content.

Video 2: Demonstration of using the cool air button to set curls and enhance shine.

Your browser does not support the video tag. Please update your browser to view this content.

Video 3: Demonstration of the Ionic Blow Dryer Brush for Curling.

6. MAINTENANCE

To ensure the longevity and optimal performance of your HITTIONA Hot Air Styler, follow these maintenance guidelines:

- **Cleaning:** Regularly clean the air inlet filter at the bottom of the main unit to prevent dust and hair buildup, which can affect airflow and performance.
- **Attachment Care:** Remove hair from brush bristles after each use. Wipe attachments with a soft, damp cloth.
- **Storage:** Store the device and its attachments in the provided travel bag in a cool, dry place when not in use.

7. TROUBLESHOOTING

If the hair styler doesn't turn on:

1. The styler is equipped with an ALCI plug. Once the ALCI plug is triggered, users need to reset the device by following the instructions.
2. Press the Reset button on the plug.
3. Turn on your appliance to check if it works. If not, please contact customer support.

Only US/EU/CA utilize standard plugs without this issue.

8. SPECIFICATIONS

Feature	Detail
---------	--------

Model Number	F2
Brand	HITTIONA
Power Source	Corded Electric
Wattage	1500W
Material	Ceramic Tourmaline Coating
Product Dimensions	14 x 4 x 9 inches
Item Weight	3.13 Pounds

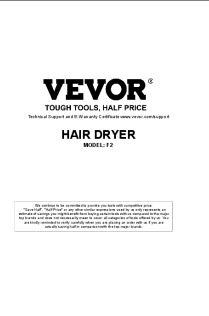

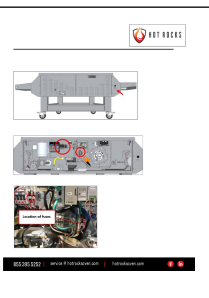
9. WARRANTY AND SUPPORT

Thank you for your purchase! You receive a 12-month warranty once you receive the product. Simply email us with your order number to claim a 12-month warranty.

If you encounter any issues or are not satisfied with our products, please contact us directly. We will help you deal with it quickly.

Contact Customer Service: CustomerAfterService-H@outlook.com

Related Documents - F2

	<p>VEVOR Hair Dryer Model F2 User Manual and Instructions</p> <p>This document provides comprehensive instructions, specifications, and safety precautions for the VEVOR Hair Dryer, Model F2. Learn how to operate, maintain, and troubleshoot your device for optimal performance.</p>
	<p>Ribogrow Hair Booster Serum: Combat Hair Loss with 2-Deoxy-D-Ribose</p> <p>Discover Ribogrow Hair Booster Serum, an innovative formula designed to combat hair loss. Featuring 2-Deoxy-D-Ribose and dermatologically developed active ingredients, it promotes scalp circulation, stimulates hair growth, and strengthens hair from the root. Includes usage instructions and tips for healthy hair.</p>
	<p>Hot Rocks Oven Fuse Replacement Guide</p> <p>A step-by-step guide for replacing fuses in a Hot Rocks oven, including safety precautions and detailed instructions.</p>

BioStar 2.9.2 ADMINISTRATOR GUIDE

suprema

[Suprema BioStar 2.9.2 Administrator Guide](#)

Comprehensive administrator guide for Suprema's BioStar 2.9.2 software, covering installation, device management, user access control, time & attendance, and system configuration for secure access solutions.

CRANE 4E 摄像机参数列表

序号	名称	单位	范围	默认值
1	分辨率	像素	1920x1080	1920x1080
2	帧率	帧/秒	1-30	30
3	码率	Kbps	128-4096	2048
4	帧大小	KB	1-10	5
5	帧间隔	帧	1-30	1
6	帧大小	KB	1-10	5
7	帧间隔	帧	1-30	1
8	帧大小	KB	1-10	5
9	帧间隔	帧	1-30	1
10	帧大小	KB	1-10	5
11	帧间隔	帧	1-30	1
12	帧大小	KB	1-10	5
13	帧间隔	帧	1-30	1
14	帧大小	KB	1-10	5
15	帧间隔	帧	1-30	1
16	帧大小	KB	1-10	5
17	帧间隔	帧	1-30	1
18	帧大小	KB	1-10	5
19	帧间隔	帧	1-30	1
20	帧大小	KB	1-10	5
21	帧间隔	帧	1-30	1
22	帧大小	KB	1-10	5
23	帧间隔	帧	1-30	1
24	帧大小	KB	1-10	5
25	帧间隔	帧	1-30	1
26	帧大小	KB	1-10	5
27	帧间隔	帧	1-30	1
28	帧大小	KB	1-10	5
29	帧间隔	帧	1-30	1
30	帧大小	KB	1-10	5
31	帧间隔	帧	1-30	1
32	帧大小	KB	1-10	5
33	帧间隔	帧	1-30	1
34	帧大小	KB	1-10	5
35	帧间隔	帧	1-30	1
36	帧大小	KB	1-10	5
37	帧间隔	帧	1-30	1
38	帧大小	KB	1-10	5
39	帧间隔	帧	1-30	1
40	帧大小	KB	1-10	5
41	帧间隔	帧	1-30	1
42	帧大小	KB	1-10	5
43	帧间隔	帧	1-30	1
44	帧大小	KB	1-10	5
45	帧间隔	帧	1-30	1
46	帧大小	KB	1-10	5
47	帧间隔	帧	1-30	1
48	帧大小	KB	1-10	5
49	帧间隔	帧	1-30	1
50	帧大小	KB	1-10	5
51	帧间隔	帧	1-30	1
52	帧大小	KB	1-10	5
53	帧间隔	帧	1-30	1
54	帧大小	KB	1-10	5
55	帧间隔	帧	1-30	1
56	帧大小	KB	1-10	5
57	帧间隔	帧	1-30	1
58	帧大小	KB	1-10	5
59	帧间隔	帧	1-30	1
60	帧大小	KB	1-10	5
61	帧间隔	帧	1-30	1
62	帧大小	KB	1-10	5
63	帧间隔	帧	1-30	1
64	帧大小	KB	1-10	5
65	帧间隔	帧	1-30	1
66	帧大小	KB	1-10	5
67	帧间隔	帧	1-30	1
68	帧大小	KB	1-10	5
69	帧间隔	帧	1-30	1
70	帧大小	KB	1-10	5
71	帧间隔	帧	1-30	1
72	帧大小	KB	1-10	5
73	帧间隔	帧	1-30	1
74	帧大小	KB	1-10	5
75	帧间隔	帧	1-30	1
76	帧大小	KB	1-10	5
77	帧间隔	帧	1-30	1
78	帧大小	KB	1-10	5
79	帧间隔	帧	1-30	1
80	帧大小	KB	1-10	5
81	帧间隔	帧	1-30	1
82	帧大小	KB	1-10	5
83	帧间隔	帧	1-30	1
84	帧大小	KB	1-10	5
85	帧间隔	帧	1-30	1
86	帧大小	KB	1-10	5
87	帧间隔	帧	1-30	1
88	帧大小	KB	1-10	5
89	帧间隔	帧	1-30	1
90	帧大小	KB	1-10	5
91	帧间隔	帧	1-30	1
92	帧大小	KB	1-10	5
93	帧间隔	帧	1-30	1
94	帧大小	KB	1-10	5
95	帧间隔	帧	1-30	1
96	帧大小	KB	1-10	5
97	帧间隔	帧	1-30	1
98	帧大小	KB	1-10	5
99	帧间隔	帧	1-30	1
100	帧大小	KB	1-10	5

[ZHIYUN CRANE 4E](#)

ZHIYUN CRANE 4E

Canon Nikon



[ribogrow Hair Booster Tonic: Guide to Healthy Hair and Hair Loss Support](#)

Discover ribogrow Hair Booster Tonic, a daily support formula for thinning hair. Learn about its potent 2-deoxy-D-ribose active ingredient matrix, usage instructions, and tips for promoting healthy hair from F2 Labs GmbH.