

[Manuals.plus](#) /

> [Lian Li](#) /

> Lian Li VG4v4 ATX Vertical GPU Kit with PCIe 5.0 Riser Cable Instruction Manual

Lian Li VG4-5-V4X

Lian Li VG4v4 ATX Vertical GPU Kit with PCIe 5.0 Riser Cable Instruction Manual

Model: VG4-5-V4X

1. INTRODUCTION

This manual provides detailed instructions for the installation, operation, and maintenance of the Lian Li VG4v4 ATX Vertical GPU Kit. This kit allows for vertical mounting of a graphics processing unit (GPU) within an ATX compatible PC case, utilizing a high-speed PCIe 5.0 riser cable. It features adjustable height settings, dual-angle tilt functionality, and an anti-sag support arm to ensure stability and optimal performance.

2. SAFETY INFORMATION

Please read and understand all safety instructions before installation and use. Failure to follow these instructions may result in product damage, personal injury, or voiding of the warranty.

- Ensure your computer system is powered off and unplugged from the wall outlet before beginning installation.
- Discharge any static electricity from your body before handling internal components.
- Handle the PCIe riser cable and GPU with care to avoid damage to connectors.
- Do not force components into place. If a component does not fit, recheck compatibility and alignment.
- Keep small parts and tools away from children.
- GPUs with an overclocking button may conflict with the adjustable structure of the GPU support bracket. Remove the overclocking button prior to installation to avoid interference.
- GPUs equipped with three full-size DisplayPorts may contact the slot when the mount is installed at a slight angle.
- Ensure both ends of the riser cable are securely connected to the GPU and motherboard while the system is powered off. Improper installation may cause electrical short circuits or hardware damage.

3. PACKAGE CONTENTS

Verify that all components are present in your package:

- VG4v4 Vertical GPU Kit (main bracket assembly with integrated PCIe 5.0 riser cable)
- Anti-sag support arm(s) (standard for ATX/M-ATX, and potentially an extension arm for E-ATX)
- Mounting screws (#6-32 thread)
- Installation Guide

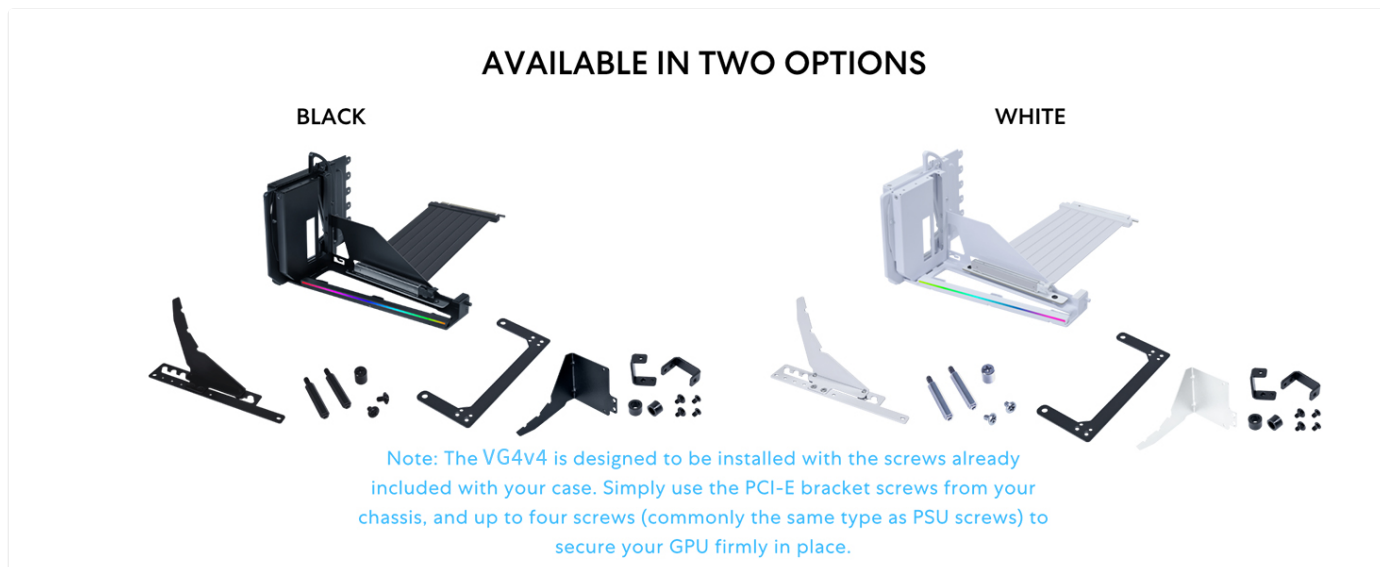


Image: Overview of the Lian Li VG4v4 Vertical GPU Kit, showing both black and white versions along with included accessories like the anti-sag bracket and screws.

Your browser does not support the video tag.

Video: An unboxing video of the Lian Li VG4-5v4 Vertical GPU Kit, demonstrating the contents of the package.

4. SETUP AND INSTALLATION

This section guides you through the installation process of the Lian Li VG4v4 Vertical GPU Kit.

4.1 Compatibility Check

- **Case Compatibility:** The kit is designed for ATX compatible cases. It requires at least 6 PCIe slots for standard vertical mounting and 7 slots for tilted configurations.
- **GPU Size:** The bracket accommodates GPUs up to 4 slots thick.
- **Motherboard Compatibility:** Ensure your motherboard is ATX or E-ATX compatible. For E-ATX motherboards, an extension arm for anti-sag support may be required.
- **BIOS Update:** Ensure your motherboard's BIOS is updated to the latest version to maintain full compatibility with PCIe 5.0.

4.2 Preparing Your PC Case

1. Power off your PC and unplug all cables.
2. Open your PC case and remove any existing horizontal GPU.
3. Remove the necessary PCIe slot covers from the rear of your case to accommodate the vertical GPU mount.

4.3 Installing the Vertical GPU Kit

1. **Attach the GPU to the Bracket:** Carefully align your GPU with the PCIe slot on the vertical GPU bracket. Press the GPU downward until the side latch automatically locks into the PCIe slot.
2. **Secure the GPU:** Use the provided screws to secure the GPU to the bracket.
3. **Install the Bracket into the Case:** Position the assembled GPU and bracket into your PC case. The bracket is

designed to be installed using the screws already included with your case (typically PCIe-E bracket screws and up to four PSU-type screws).

4. **Connect the Riser Cable:** Connect the PCIe 5.0 riser cable from the vertical GPU bracket to the appropriate PCIe x16 slot on your motherboard. Ensure both ends are securely connected.

ENHANCED GPU STABILITY

The rubber pad has been refined to a slimmer profile, preventing the graphics card from being pushed upward and dislodged, ensuring a smoother and more secure installation experience.

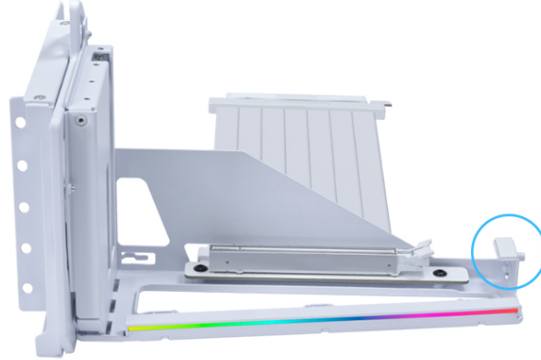


Image: Illustration of the adjustable slot design, supporting up to six slots for vertical installation or seven for angled mounting. It also highlights that the bracket shifts the GPU forward by 31mm, requiring sufficient internal case depth.

ARGB LIGHTING: A TOUCH OF BRILLIANCE

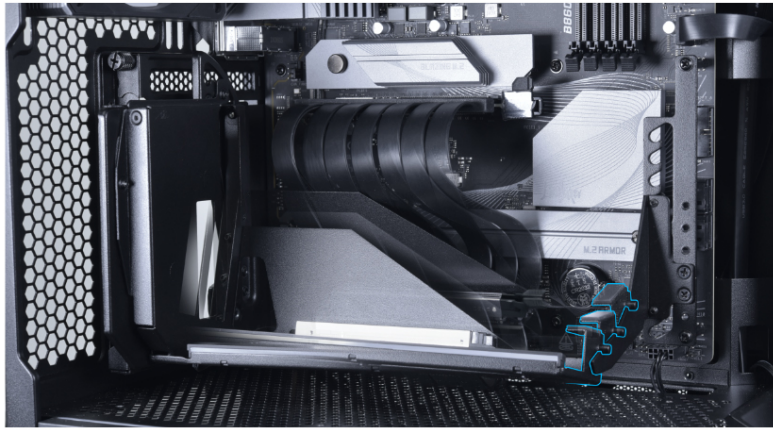
The built-in 5V ARGB lighting integrates effortlessly with major motherboard lighting software. Vivid effects bring the build to life and add visual depth to the system's core.



Image: Detailed view of the 200mm PCIe 5.0 riser cable, emphasizing its high-speed data transfer capabilities and compatibility with PCIe 4.0 devices.

4.4 Installing the Anti-Sag Support Arm

1. Attach the anti-sag support arm to a motherboard standoff.
2. Adjust the height of the support arm to firmly support the GPU, preventing sag.
3. For E-ATX motherboards, use the provided extension arm if necessary for proper alignment and clearance.



Flexible support arm placement to suit different GPU setups.

Image: Visual representation of the dual anti-sag support configurations for ATX/M-ATX and E-ATX motherboards, illustrating how the support arm attaches.

Your browser does not support the video tag.

Video: A demonstration of the VG4-5 Vertical GPU Bracket's E-ATX compatibility, showing the installation of the anti-sag support.

5. OPERATION AND ADJUSTMENTS

The VG4v4 kit offers several adjustment options to optimize GPU positioning and aesthetics.

5.1 Height Adjustment

The bracket provides three mounting heights, each adjustable in 10.16mm increments with a simple one-screw adjustment. This allows for precise GPU positioning and clearance for bottom-mounted fans or larger CPU coolers.

- **Level 1:** Lowers the GPU to enhance visibility of AIO liquid coolers with built-in displays.
- **Level 2 or 3:** Adjusting to these levels improves compatibility with bottom-mounted fans or radiators.

FINE-TUNED HEIGHTS, PERFECTED BUILDS

THREE-LEVEL HEIGHT ADJUSTMENT

The bracket provides three mounting heights, each adjustable in 10.16mm increments with a simple one-screw adjustment, enabling precise GPU positioning and allowing clearance for bottom fans or larger CPU coolers with ease.

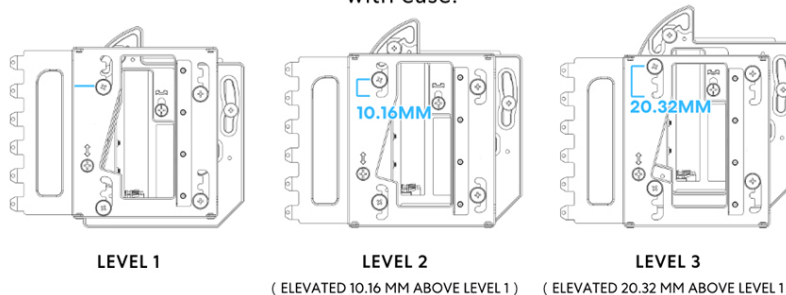
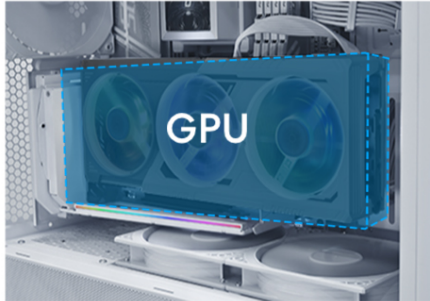


Image: Diagram showing the three height adjustment levels (Level 1, Level 2 at 10.16mm elevated, and Level 3 at 20.32mm elevated) for optimal GPU placement.

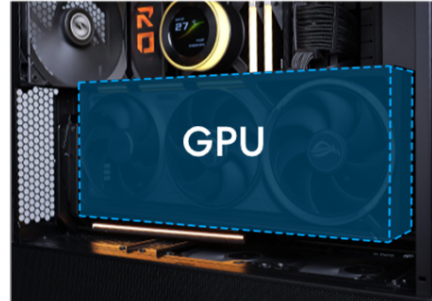
5.2 Dual-Angle Tilt Function

Each height level supports forward, neutral, and backward display angles. Dedicated mounting holes on the support arm allow for quick, precise, and tool-free adjustments.

- **Forward Tilt:** Improves airflow, allowing cooler air to enter and warm air to exit more efficiently, enhancing thermal performance. Also boosts airflow and thermal efficiency, ensuring better clearance for high-performance coolers.
- **Backward Tilt:** Showcases the graphics card with a more refined and visually appealing angle.



Adjusting the bracket to Level 2 or Level 3 improves compatibility with bottom-mounted fans or radiators.



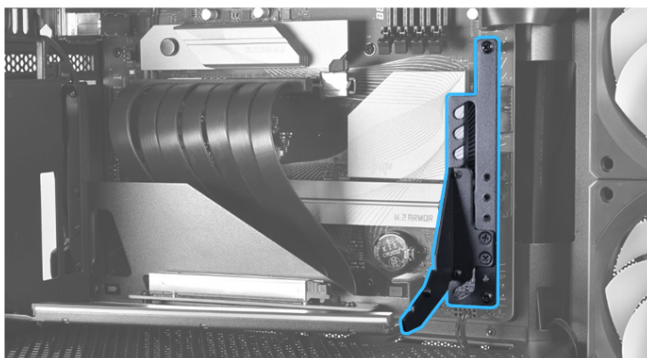
Lowering the bracket to Level 1 enhances the visibility of AIO liquid coolers with built-in displays.

Note: Once the adjustment is complete, please ensure the screw is properly secured.

Image: Three views of a GPU mounted in the kit, demonstrating the forward, neutral, and backward tilt positions.

5.3 ARGB Lighting

The built-in 5V ARGB lighting integrates with major motherboard lighting software. Connect the ARGB cable from the kit to your motherboard's ARGB header to control lighting effects.



PERFORMANCE, SECURED WITH STRENGTH

ANTI-SAG SUPPORT: ROCK SOLID AND RELIABLE

The anti-sag arm supports up to 10kg with out bending and mounts directly to the motherboard standoffs. Also, it offers adjustable height settings for precise alignment, working seamlessly with 4-slot GPU configurations supported by the bracket.

Image: A close-up view of the integrated 5V ARGB lighting strip on the vertical GPU kit, showcasing its illumination.

6. MAINTENANCE

To ensure the longevity and optimal performance of your Lian Li VG4v4 Vertical GPU Kit, follow these simple maintenance guidelines:

- **Cleaning:** Periodically clean the bracket and riser cable with a soft, dry cloth to remove dust. Do not use liquid cleaners or solvents.

- **Connections:** Ensure all cable connections (PCIe riser, ARGB) remain secure.
- **Screws:** Check that all mounting screws are tightened appropriately.

7. TROUBLESHOOTING

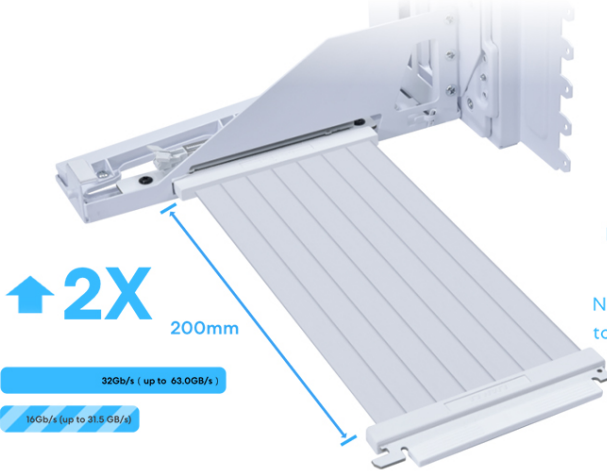
If you encounter issues with your VG4v4 Vertical GPU Kit, refer to the following common problems and solutions:

Problem	Possible Cause	Solution
GPU not detected or system instability.	Loose PCIe riser cable connection; outdated motherboard BIOS; incompatible PCIe slot.	Ensure both ends of the PCIe riser cable are fully seated. Update your motherboard BIOS to the latest version. Verify the PCIe slot is correctly configured in BIOS (e.g., PCIe Gen 4/5 setting).
GPU sag despite anti-sag arm.	Anti-sag arm not properly adjusted or secured.	Re-adjust the anti-sag support arm to ensure it firmly supports the GPU. Ensure it is securely attached to a motherboard standoff.
RGB lighting not working.	ARGB cable not connected or faulty; software issue.	Check the ARGB cable connection to the motherboard. Ensure your motherboard's ARGB software is installed and configured correctly.
Interference with GPU I/O ports or other components.	Incorrect height or tilt adjustment; GPU overclocking button interference.	Adjust the height and tilt of the GPU bracket. If your GPU has an overclocking button, remove it if it causes interference. Ensure sufficient clearance for DisplayPort cables if using three full-size ports.

8. SPECIFICATIONS

Feature	Detail
Model Name	4 Slots Vertical GPU Kit (VG4v4)
Model Number	VG4-5-V4X (Black), VG4-5-V4W (White)
Color	Black (current product)
Dimensions (L x W x H)	168.63mm x 147.5mm x 234.86mm
Material	Steel
Riser Cable	Gen 5.0 (PCIe 5.0 x16)
Cable Length	200mm
Bandwidth	Up to 32 Gbps (double PCIe 4.0)
Expansion Slots Supported	4 slots (for GPU thickness)
Case Compatibility	Most ATX cases (requires 6 PCIe slots for standard, 7 for tilted)
Special Features	Advanced GPU Mounting System, Dual-Angle Tilt, Anti-Sag Support, Integrated ARGB Lighting
Manufacturer	LIAN LI

Feature	Detail
UPC	840353052673



PCIe 5.0 CABLE BUILT FOR HIGH SPEED AND FULL COMPATIBILITY

The 200mm PCIe 5.0 riser cable delivers up to 32Gb/s bandwidth, which is twice the speed of PCIe 4.0. It supports PCIe 2.0 to 4.0 devices and ensures stable signal transmission with consistently high performance across wide range of GPUs.

BIOS Update: Ensure that your motherboard's BIOS is updated to the latest version to maintain full compatibility with PCIe 5.0.

Note: Always ensure both ends of the riser cable are securely connected to the GPU and motherboard while the system is powered off. Improper installation may cause electrical short circuits or hardware damage.

Image: A table summarizing the technical specifications of the VG4v4 Vertical GPU Kit, including model names, dimensions, material, and riser cable details.

9. WARRANTY AND SUPPORT

The Lian Li VG4v4 ATX Vertical GPU Kit comes with a **1-year warranty** from the date of purchase. For technical support, warranty claims, or further inquiries, please visit the official Lian Li website or contact their customer service department. You can find more information and contact details on the [Lian Li Store page](#).

