

Manuals+

[Q & A](#) | [Deep Search](#) | [Upload](#)

manuals.plus /

› [Toshiba](#) /

› [Toshiba Stone Kiln Dome Superheated Steam Oven Range ER-D4000B User Manual](#)

Toshiba ER-D4000B

Toshiba Stone Kiln Dome Superheated Steam Oven Range

MODEL: ER-D4000B

1. Introduction and Overview

This manual provides essential instructions for the safe and efficient operation of your Toshiba Stone Kiln Dome Superheated Steam Oven Range, model ER-D4000B. This compact premium model features advanced cooking technologies designed to simplify your daily meal preparation.



Figure 1.1: Toshiba ER-D4000B Oven Range with key specifications.

Key features include a High-angle infrared sensor for precise temperature detection, specialized cooking modes like 'Stone Kiln Omakase Baking' and 'Easy Bowl Pasta/Curry Plus', and 'Superheated Steam Cooking' for healthier meals. The oven also boasts a space-saving design and a Smart Damper for quiet door closure.

Video 1.1: Product Introduction Video. This video provides a general overview of the Toshiba Stone Kiln Dome Superheated Steam Oven Range's features and capabilities.

2. Setup

2.1 Unpacking

Carefully remove the oven range from its packaging. Retain all packaging materials for future transport or service needs. Inspect the appliance for any damage. Do not operate if damaged.

2.2 Placement

Place the oven range on a stable, level surface. Due to its slim depth of 39.9 cm (excluding the handle), it can be installed flush against walls on the left, right, and back, optimizing kitchen space. Ensure adequate ventilation around the appliance as specified in the full instruction manual.

2.3 Power Connection

Connect the power cord to a grounded electrical outlet. Ensure the voltage matches the specifications listed on the appliance's rating label.

3. Operating Instructions

3.1 Basic Microwave Heating

The oven range offers a maximum microwave output of 1000W for short-duration heating (up to 3 minutes). For continuous operation, the power automatically switches to 600W. Use the control panel to select the desired power level and heating time.

センサーでしっかりあたため

あたため機能

ハイアングル赤外線センサーが
食品の表面温度を上手に検知



●画像はイメージです

Figure 3.1: Speed heating mode, demonstrating time reduction with 'Rush Mode'.

3.2 Sensor Heating

The integrated High-angle infrared sensor accurately detects the surface temperature of food, allowing for precise and thorough heating. This feature helps prevent uneven heating and ensures optimal results.

TOSHIBA

過熱水蒸気オーブンレンジ

ER-D4000B

庫内容量

26L

最高出力

1000W

自動メニュー

210



石窯ドーム[®]
ISHIGAMA DOME

(K) ブラック

Figure 3.2: Sensor heating in action, ensuring food is heated thoroughly.

3.3 Automatic Menus

Access 210 pre-programmed automatic menus for a wide variety of dishes. Simply select the desired menu, and the oven will automatically adjust cooking time and temperature for optimal results. This includes 'Speed Menus' for quick preparation.

手動あたためがスピードアップ お急ぎモード

あたため機能

あたためはいつも通りの時間で設定
お急ぎモードを使えば時短にあたため

最大
30%
時短に!

500W5分

お急ぎモードで
3分31秒



手動レンジ600W・500Wを
「お急ぎモード」で
1000Wに切り替え時短

●画像はイメージです

Figure 3.3: Examples of dishes prepared using the automatic menu function.

3.4 Superheated Steam Cooking

Utilize the superheated steam cooking function to reduce oil and salt content in your meals, promoting healthier eating without compromising flavor.

3.5 Oven Functions

The 'Stone Kiln Omakase Baking' feature allows you to simply arrange your favorite ingredients, and the oven will automatically bake them to perfection, adjusting heat based on quantity and ingredient type. The 'Easy Bowl Pasta/Curry Plus' function simplifies cooking by allowing all ingredients to be placed in a bowl and cooked with a single course selection.

便利なあたため機能

あたため機能



しわができる



「レンジ」であたためた場合
(600W 20秒/2個)

ふっくら／



「ふっくらパン」であたためた場合

ふっくらパン(パンのあたため)

市販のパンが、焼きたての
ようにふっくらあたたかく

冷凍したバターロールも！

お好み温度あたため

-10℃～90℃まで、
設定した温度であたため※



カラッとあたため

あたため直しでも、
作りたての食感に



スチームあたため

ラップなしで
しっとりあたたかく



※.食品内部は設定通りの温度にならないことがあります。

●画像はイメージです

Figure 3.4: Stone Kiln Omakase Baking for versatile and automatic cooking.

おまかせ調理で毎日の料理がもっとラクに 石窯おまかせ焼き

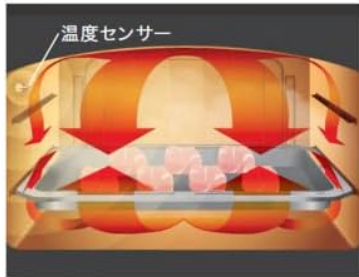
おまかせ調理

好きな食材をならべるだけ! 本格料理もおまかせフルオート※



●画像は、ER-D7000Bの角皿を使用しています。

温度センサーで分量に合わせて、火加減を自動調節



選んだ食材やコースに合わせて、焼き上げる! さらにお好みに合わせて仕上げ調節!



※.食材（骨つき肉やブロック肉を含む）などのコースを選択すれば、温度設定、時間設定が不要で、分量フリーの自動調理。調理可能な分量範囲・調理のポイントがあります。食材の大きさやばらつきによって仕上がりが異なる場合があります。詳しくは取扱説明書【料理集】をご覧ください。 ●画像はイメージです

Figure 3.5: Easy Bowl Pasta/Curry Plus for simplified meal preparation.

You can also bake dishes directly from frozen, eliminating the need for defrosting on busy days. This ensures delicious results with minimal preparation time.

簡単調理

おまかせ調理

簡単ボウルパスタ・カレーplus

一度にすべての材料をボウルに入れ、コースを選んでスタートするだけ。*



パスタコースは
ソースの種類が
選べる

- ・トマト
- ・クリーム
- ・ソースなし*

*ソースは後入れ

おまかせ約**13分**(1人分)



2つのセンサーで状態を検知
ふきこぼれを抑えて上手に加熱します

毎日の食卓に役立つコース搭載！



カレーはもちろん
シチューやハヤシも！

※. 詳しくは取扱説明書[料理集]をご覧ください。

● 画像はイメージです

Figure 3.6: Baking from frozen, demonstrating convenience for busy schedules.

3.6 Convenient Heating Functions

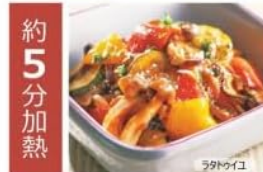
The oven offers various heating options, including 'Fluffy Bread' mode to make store-bought bread taste freshly baked, custom temperature heating from -10°C to 90°C for tasks like softening butter or preparing raw chocolate, 'Crispy Heating' to restore the texture of freshly made fried foods, and 'Steam Heating' for moist and warm results without plastic wrap.

毎日のごはんに役立つ自動メニュー

おまかせ調理

スピードメニュー

約**1**分加熱



冷凍野菜メニュー

煮崩れを防いでおいしく

● 画像はイメージです

Figure 3.7: Overview of convenient heating functions.

4. Maintenance

Regular cleaning is essential to maintain the performance and longevity of your oven range. Always ensure the appliance is unplugged and cooled before cleaning.

4.1 Interior Cleaning

The oven interior features a special coating designed for easy cleaning. Wipe down the interior surfaces with a soft, damp cloth after each use to remove food splatters and grease. For stubborn stains, use a mild detergent specifically designed for oven interiors, following the product instructions.

Video 4.1: Torechau Coat Demonstration. This video demonstrates the easy-to-clean properties of the oven's interior coating, simplifying maintenance.

4.2 Exterior Cleaning

Wipe the exterior surfaces with a soft, damp cloth. Avoid abrasive cleaners or scouring pads, as they can damage the finish.

4.3 Accessories

Clean the baking tray, wire rack, and other accessories with warm, soapy water. Rinse thoroughly and dry completely before reinserting them into the oven.

5. Troubleshooting

If you encounter any issues with your Toshiba ER-D4000B oven range, please refer to the comprehensive troubleshooting section in the full instruction manual. Common issues and their solutions are typically covered there. If the problem persists, contact customer support.

6. Specifications

Feature	Specification
Model Number	ER-D4000B
External Dimensions (W x D x H)	493 mm x 399 mm x 357 mm (excluding handle)
Weight (Main Unit Only)	Approx. 21 kg
Total Oven Capacity	26 Liters
Maximum Microwave Output	1000W (short-time, max 3 minutes)
Continuous Microwave Output	600W
Automatic Menus	210
Color	Black

7. Warranty and Support

7.1 Warranty Information

The Toshiba ER-D4000B oven range comes with a 1-year manufacturer's warranty from the date of purchase. Please retain a copy of your purchase receipt or donation certificate as proof of purchase for warranty claims. The warranty period remains unchanged even if the product is unopened or unused. Repairs for malfunctions caused by improper use or disasters will incur charges for repair costs and shipping.

7.2 Customer Support

For technical assistance, inquiries, or service requests, please contact Toshiba Customer Support:

- **Free Dial:** 0120-03-1048
- **Navi Dial:** 0570-07-1048 (Call charges apply for IP phones and mobile phones)

Business: Toshiba Consumer Marketing Corporation