

## SONOFF SNZB-01P

# SONOFF SNZB-01P Zigbee Wireless Push Button Instruction Manual

Model: SNZB-01P

## 1. INTRODUCTION

This manual provides detailed instructions for the installation, operation, and maintenance of your SONOFF SNZB-01P Zigbee Wireless Push Button. Please read this manual thoroughly before using the device to ensure proper function and safety.

## 2. PRODUCT OVERVIEW

### 2.1 Package Contents

- SONOFF SNZB-01P Zigbee Wireless Push Button (Quantity as purchased)
- User Manual
- Mounting Accessories (e.g., adhesive tape, screws)
- CR2477 Battery (pre-installed or included)

### 2.2 Device Features

- **Custom Button Actions:** Supports single press, double press, and long press for various smart scene triggers.
- **Zigbee 3.0 Compatibility:** Works with standard Zigbee 3.0 hubs like SONOFF NSPanel Pro, ZB Bridge Pro, and ZBDongle-E.
- **Alexa Routine Trigger:** Can activate Alexa routines when connected to a SONOFF Zigbee hub.
- **Emergency Functionality:** Can be configured as an emergency button to send alerts.
- **Extended Battery Life:** Powered by a CR2477 battery, offering approximately 5 years of battery life under typical usage.
- **Flexible Placement:** Can be installed flat or stuck to any surface.



Figure 1: SONOFF SNZB-01P Zigbee Wireless Push Button (Example 2-Pack)

### 3. SETUP AND INSTALLATION

#### 3.1 Requirements

- A compatible Zigbee 3.0 hub (e.g., SONOFF NSPanel Pro, ZB Bridge Pro, ZBDongle-E, SmartThings Hub).
- eWelink App (or your preferred Zigbee hub's application) installed on your smartphone.

#### 3.2 Pairing the Device

1. **Power On:** Ensure the CR2477 battery is correctly inserted into the SNZB-01P switch.
2. **Activate Pairing Mode on Hub:** Open your Zigbee hub's application (e.g., eWelink App) and initiate the device pairing process. Refer to your hub's specific instructions for this step.
3. **Activate Pairing Mode on Switch:** Locate the external pairing button on the side of the SNZB-01P switch. Press and hold this button for approximately 5 seconds until the LED indicator on the switch blinks, indicating it is in pairing mode.

4. **Confirm Pairing:** Once the switch is successfully paired, the LED indicator will stop blinking, and the device should appear in your hub's application.

## Improved Design and Performance



\*The battery life data is a theoretical value, obtained from SONOFF's internal laboratory under a specific test environment(10 keystrokes/hour, pairing once a month). Actual use may vary slightly due to product differences, firmware software versions, operating conditions, and environmental factors. Please refer to the actual use.

Figure 2: External Pairing Button and Battery Access

### 3.3 Installation

The SNZB-01P switch can be placed on any flat surface or mounted using the provided adhesive tape or screws. Its compact design allows for flexible placement in various locations.

# Put It Anywhere for Your Use

You can easily control it anywhere, no matter your home, office, shop, restaurant, etc.

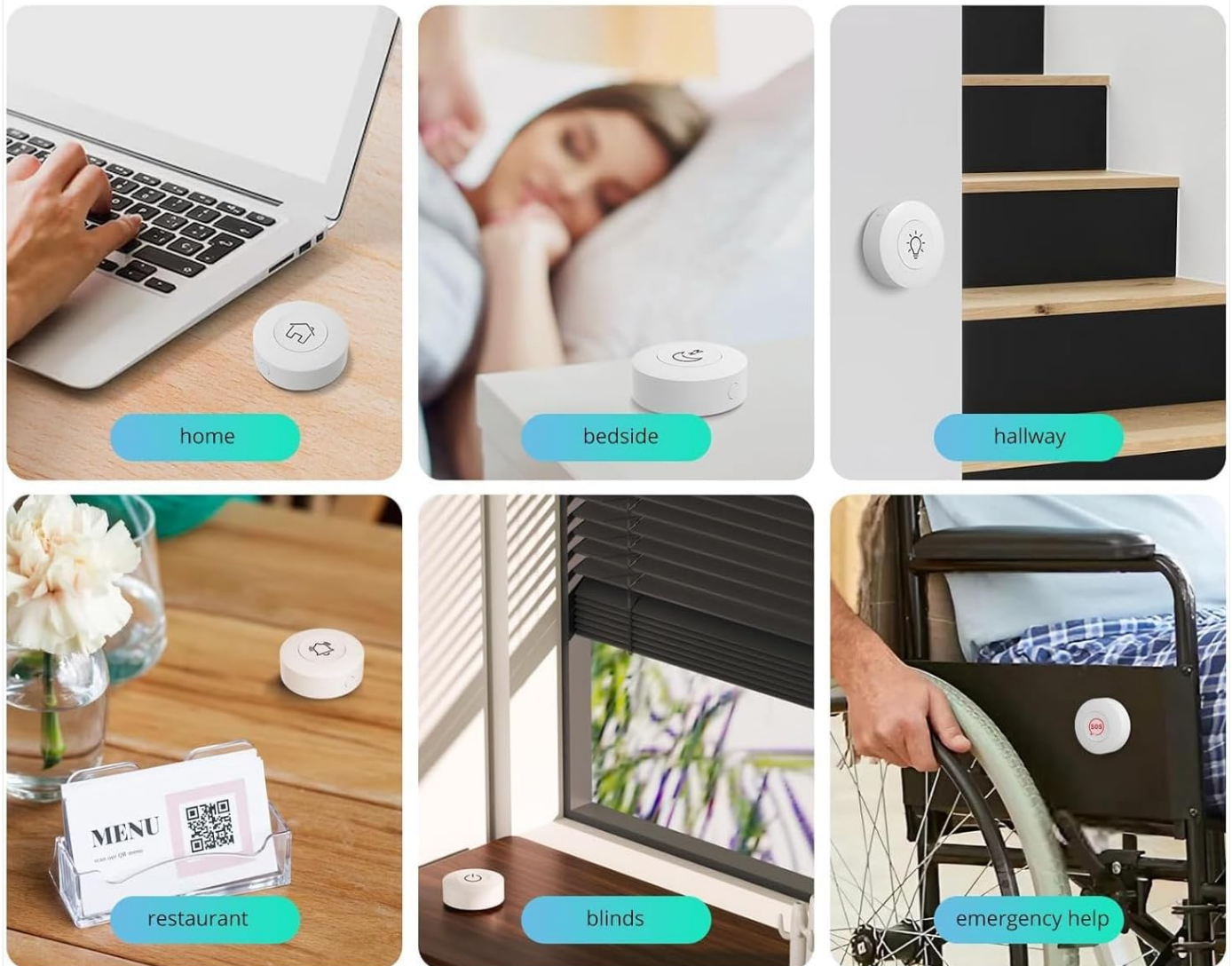


Figure 3: Flexible Placement Options

## 4. OPERATING INSTRUCTIONS

The SONOFF SNZB-01P supports three distinct button actions, which can be customized within your Zigbee hub's application to trigger various smart scenes or control devices.

### 4.1 Customizing Button Actions

1. **Single Press:** A quick press and release of the button. Typically used for simple actions like turning lights on/off.
2. **Double Press:** Two quick presses in succession. Can be used for more specific controls, such as turning on a fan.
3. **Long Press:** Press and hold the button for approximately 3-5 seconds. Suitable for actions like activating a coffee maker or an emergency alert.

To configure these actions, navigate to the device settings within your Zigbee hub's application and assign desired smart scenes or device controls to each press type.



# One Switch, Three Actions

Customize the operation corresponding to single press, double press, and long press of a wireless switch.



Single press



Double press



Long press



\*Requires Zigbee hub.



**Single press**

Turn on/off lights



**Double press**

Turn on/off fan



**Long press**

Turn on/off coffee maker

Figure 4: One Switch, Three Actions

## 4.2 Emergency Button Functionality

The SNZB-01P can be configured as an emergency button. In your smart home application, set up a scene where a long press (or any chosen action) triggers an alert notification to your phone or other designated contacts. This feature provides an added layer of safety for family members.

# Emergency Button, More Peace of Mind

In an emergency, press the button for help.

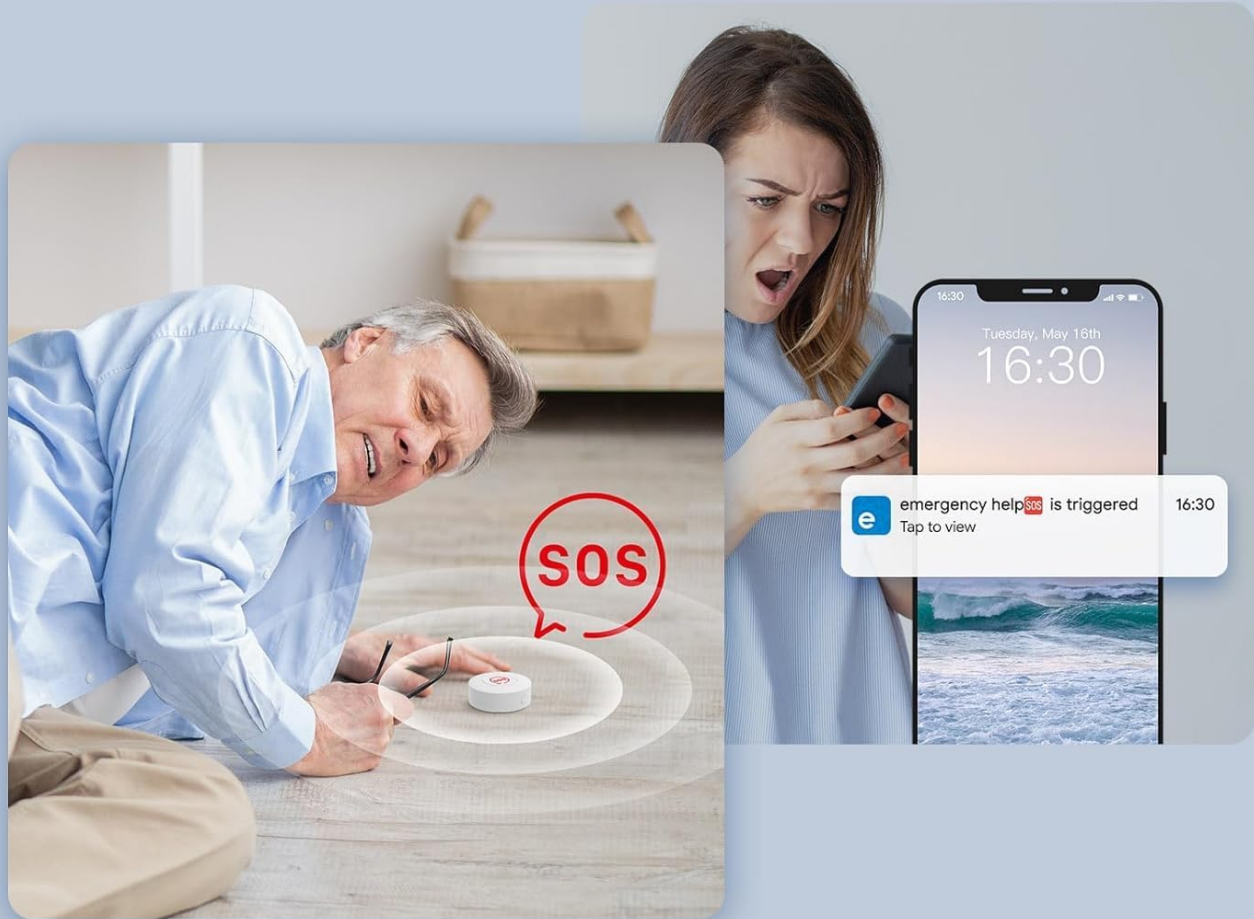


Figure 5: Emergency Button Use Case

## 4.3 Alexa Routine Integration

When connected to a SONOFF Zigbee hub, the SNZB-01P can trigger Amazon Alexa routines. This allows for voice-free control of your smart home devices or activation of complex routines with a simple button press.

# Wireless Switch for Your Alexa Routines

Trigger Alexa routines with the press of the wireless switch.

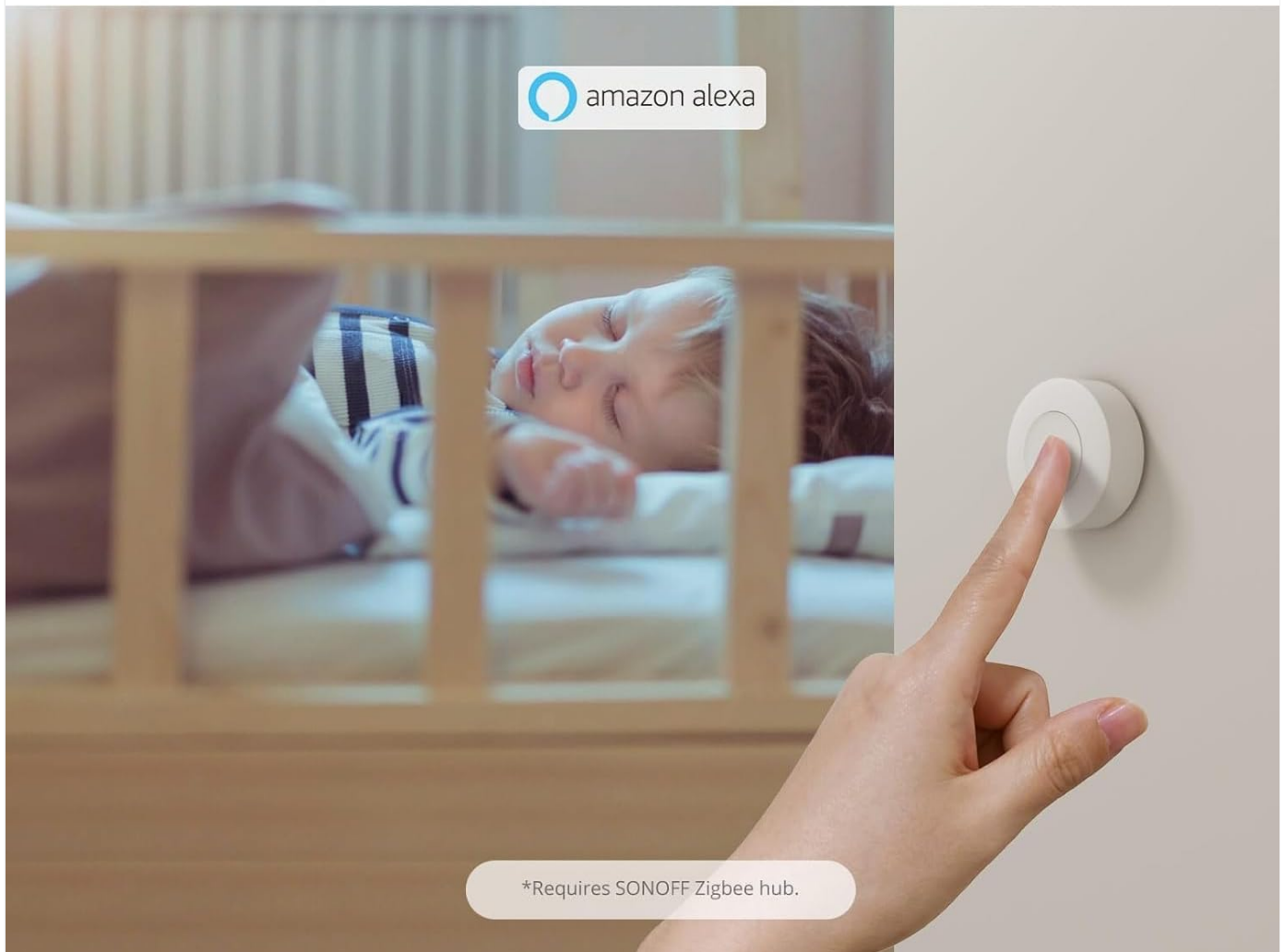


Figure 6: Triggering Alexa Routines

## 5. MAINTENANCE

### 5.1 Battery Replacement

The SNZB-01P is powered by a CR2477 lithium metal battery, designed for approximately 5 years of use. When the battery level is low, you will receive a notification through your connected smart home application.

1. **Access Battery Compartment:** Gently twist the back cover of the device counter-clockwise to open the battery compartment.
2. **Remove Old Battery:** Carefully remove the old CR2477 battery.
3. **Insert New Battery:** Insert a new CR2477 battery, ensuring the positive (+) side faces upwards.
4. **Close Compartment:** Align the back cover and twist clockwise until securely closed.

## Compatible with the Following Zigbee 3.0 Hubs



Figure 7: Battery Access and Replacement

### 5.2 Cleaning

Wipe the device with a soft, dry cloth. Avoid using liquid cleaners or abrasive materials, as these can damage the device.

## 6. TROUBLESHOOTING

Issue	Possible Cause	Solution
Device not pairing	Not in pairing mode; Hub not in pairing mode; Out of range; Low battery.	Ensure both device and hub are in pairing mode. Move device closer to hub. Check and replace battery if necessary.
Actions not triggering	Incorrect scene configuration; Device disconnected from hub; Low battery.	Verify scene configurations in the app. Re-pair the device if disconnected. Replace battery.



Issue	Possible Cause	Solution
Short battery life	Frequent usage; Extreme temperatures.	Battery life is an estimate; actual usage may vary. Ensure device is not exposed to extreme conditions.

## 7. SPECIFICATIONS

Feature	Detail
Model	SNZB-01P
Connectivity Protocol	ZigBee 3.0
Power Source	DC (Battery)
Battery Type	CR2477 Lithium Metal (3V)
Operating Voltage	3 Volts
Operation Mode	ON-OFF
Actuator Type	Push Button
Dimensions (L x W x H)	1.8 x 1.8 x 0.7 inches (45.7 x 45.7 x 17.8 mm)
Item Weight	3.52 ounces (100g)
Color	White
Material	Plastic
Upper Temperature Rating	40 Degrees Celsius
Current Rating	1 Amps
Contact Type	Normally Open
Terminal	Screw
Circuit Type	1-way

## 8. WARRANTY AND SUPPORT




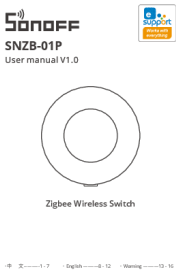

### 8.1 Warranty Information

Please refer to the warranty policy provided with your purchase or visit the official SONOFF website for detailed warranty terms and conditions. Keep your proof of purchase for warranty claims.

### 8.2 Customer Support

For technical assistance, troubleshooting, or further inquiries, please visit the official SONOFF support page or contact their customer service. You can often find FAQs and additional resources on the [SONOFF Store on Amazon](#) or their official website.

## Related Documents - SNZB-01P

 <p>SONOFF ZB Bridge-P User manual V1.0</p> <p>NEW</p> <p>New Zigbee Bridge</p> <p>English — 6/10 — FCC Warning — 11</p>	<p><a href="#">SONOFF ZB Bridge-P User Manual: Setup, Features, and Troubleshooting</a></p> <p>User manual for the SONOFF ZB Bridge-P, a smart home Zigbee gateway that connects Zigbee devices to your Wi-Fi network. This guide covers product introduction, features, setup instructions, specifications, troubleshooting common problems, and FCC compliance information.</p>
 <p>SONOFF SNZB-01P</p> <p>Inteligentní spínač ZigBee Sonoff SNZB-01P</p> <p>Návod k obsluze</p>	<p><a href="#">Sonoff SNZB-01P Zigbee Smart Switch User Manual</a></p> <p>Detailed user manual and specifications for the Sonoff SNZB-01P Zigbee Smart Switch, covering setup, features, installation, safety, and compliance.</p>
 <p>Uživatelská příručka Sonoff ZigBee</p> <p>A1: ZigBee Sonoff Bridge</p> <p>První krok</p> <p>1. Nainstalujte a připojte Sonoff Bridge k síti Wi-Fi. 2. Nainstalujte a připojte Sonoff Bridge k síti ZigBee. 3. Nainstalujte a připojte Sonoff Bridge k síti eWeLink.</p> <p>2. Nastavení a použití</p> <p>2.1. Nastavení a použití Sonoff Bridge a podřízených zařízení. 2.2. Nastavení a použití Sonoff Bridge a podřízených zařízení. 2.3. Nastavení a použití Sonoff Bridge a podřízených zařízení. 2.4. Nastavení a použití Sonoff Bridge a podřízených zařízení. 2.5. Nastavení a použití Sonoff Bridge a podřízených zařízení. 2.6. Nastavení a použití Sonoff Bridge a podřízených zařízení. 2.7. Nastavení a použití Sonoff Bridge a podřízených zařízení. 2.8. Nastavení a použití Sonoff Bridge a podřízených zařízení. 2.9. Nastavení a použití Sonoff Bridge a podřízených zařízení. 2.10. Nastavení a použití Sonoff Bridge a podřízených zařízení.</p>	<p><a href="#">Uživatelská příručka Sonoff ZigBee Bridge a podřízených zařízení</a></p> <p>Kompletní uživatelská příručka pro nastavení, párování a používání Sonoff ZigBee Bridge a kompatibilních podřízených zařízení (SNZB-01, SNZB-02, SNZB-03, SNZB-04) s aplikací eWeLink.</p>
 <p>SONOFF SNZB-01P User manual V1.0</p> <p>Zigbee Wireless Switch</p> <p>English — 8/12 — Warning — 15</p>	<p><a href="#">SONOFF SNZB-01P Zigbee Wireless Switch User Manual</a></p> <p>User manual for the SONOFF SNZB-01P Zigbee Wireless Switch, covering product introduction, features, installation, specifications, pairing, and safety warnings. Includes regulatory information and hazardous substance compliance.</p>
 <p>SONOFF SNZB-01P</p> <p>Inteligentní tlačítko ZigBee Sonoff SNZB-01P</p> <p>Οδηγός Χρήστη</p> <p>● SFK</p>	<p><a href="#">Sonoff SNZB-01P ZigBee Smart Button User Manual</a></p> <p>Comprehensive user manual for the Sonoff SNZB-01P ZigBee Smart Button, covering product description, features, activation, pairing, installation, specifications, and safety warnings.</p>



## Uživatelská příručka Sonoff ZigBee

### A1. Spáření Sonoff Bridge

1. Spáření Sonoff Bridge s aplikací eWeLink

2. Spáření Sonoff Bridge s aplikací eWeLink



3. Spáření Sonoff Bridge s aplikací eWeLink

## [Uživatelská příručka Sonoff ZigBee: Instalace a párování](#)

Podrobná uživatelská příručka pro Sonoff ZigBee Bridge a podřízená zařízení. Zjistěte, jak snadno nastavit, spárovat a ovládat vaše ZigBee zařízení pomocí aplikace eWeLink.