

## HOLKIE B0FQTHZHTD

# HOLKIE Retractable Casters 900 lbs Instruction Manual

Model: B0FQTHZHTD

## 1. INTRODUCTION

---

Thank you for choosing HOLKIE Retractable Casters. These heavy-duty casters are designed to provide effortless mobility for workbenches, equipment, and other heavy items, allowing for easy repositioning and stability when needed. This manual provides essential information for safe installation, operation, and maintenance of your casters.

## 2. PRODUCT FEATURES

---

- **Easy Operation:** Side-mounted design allows for simple lifting and lowering of your workbench or equipment using a foot pedal.
- **Effortless Mobility:** Designed for workbenches, these casters enable easy movement to any location with minimal effort.
- **Heavy-Duty Construction:** Built with high-strength steel, each caster supports up to 900 lbs, suitable for heavy workbenches and equipment.
- **360° Swivel:** Provides smooth and flexible movement, even in tight spaces, for easy repositioning.
- **Versatile Use:** Ideal for workshops, factories, and home studios, suitable for workbenches, equipment moving, cabinets, and storage shelves.



Figure 2.1: Key features of the HOLKIE Retractable Caster, highlighting its robust construction and mobility.

### 3. SAFETY INFORMATION

- Always ensure the casters are properly installed and securely fastened before use.
- Do not exceed the maximum load capacity of 900 lbs per set of 4 casters. Overloading can lead to damage or injury.
- Keep hands and feet clear of moving parts during lifting and lowering operations.
- Operate the casters on a flat, stable surface to prevent tipping.
- Regularly inspect casters for wear, damage, or loose fasteners. Replace damaged parts immediately.
- Use appropriate personal protective equipment (PPE) during installation, such as safety glasses.

### 4. PACKAGE CONTENTS

Your HOLKIE Retractable Casters package includes:

- 4 x HOLKIE Retractable Casters
- Installation Hardware (screws, bolts, nuts)
- Installation Template

## 5. SPECIFICATIONS

Brand	HOLKIE
Model Number	B0FQTHZHTD
Material	Steel
Color	Black
Load Capacity	900 Pounds (for 4 casters)
Mounting Type	Side Mount
Caster Type	Swivel

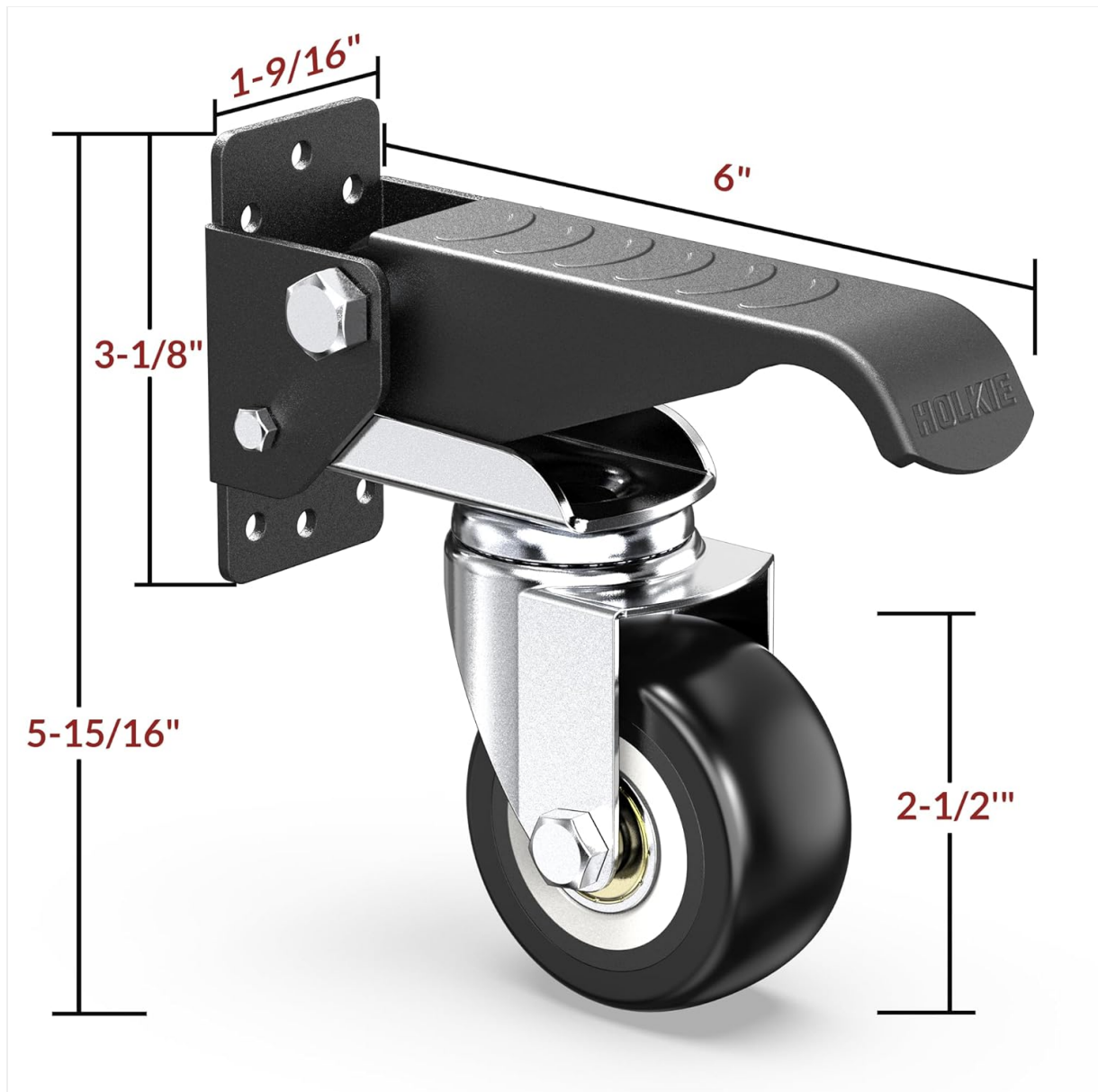


Figure 5.1: Dimensional overview of the HOLKIE Retractable Caster.

## 6. SETUP AND INSTALLATION

The casters are designed for side-mounting on workbenches or equipment legs. An installation template is included to assist with proper placement.

1. **Prepare the Mounting Surface:** Identify the desired mounting location on the side of your workbench or equipment leg. Ensure the surface is flat and strong enough to support the caster and load.
2. **Drill Pilot Holes:** Use the provided installation template to mark the drilling points. Carefully drill pilot holes for the mounting screws.
3. **Fix the Plate:** Align the caster's mounting plate with the drilled holes and secure it firmly using the provided screws. Ensure all screws are tightened to prevent wobbling.
4. **Install the Casters:** Attach the caster wheel assembly to the fixed plate using the bolts and nuts. Ensure all connections are secure.
5. **Repeat for all Casters:** Install all four casters following the same steps, ensuring they are evenly distributed for balanced support.

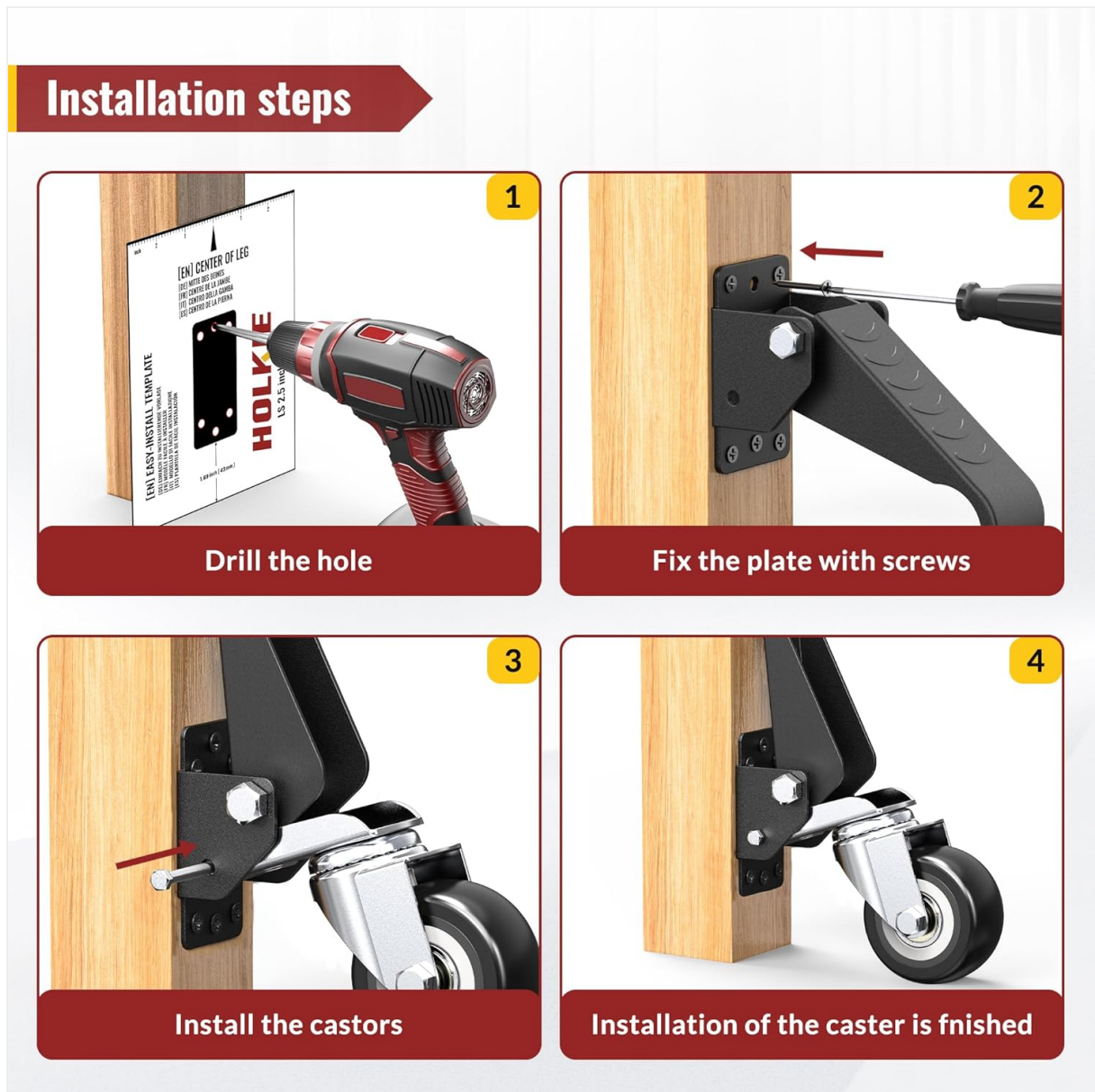


Figure 6.1: Step-by-step guide for installing the retractable casters.

## 7. OPERATING INSTRUCTIONS

The HOLKIE Retractable Casters feature a simple foot pedal mechanism for engaging and disengaging mobility.

- **To Lift and Move the Workbench:** Place your foot on the caster's pedal and step down firmly. This action will lift the workbench slightly (approximately 1/2 inch) off the ground, engaging the caster wheels and allowing you to move the workbench.

- **To Lower and Stabilize the Workbench:** Once the workbench is in the desired position, lift the pedal with your foot. This will retract the caster wheels, lowering the workbench back onto its original legs or base, providing stability.



Figure 7.1: Operating the casters to lift and lower a workbench.

## 8. MAINTENANCE

Regular maintenance ensures the longevity and optimal performance of your HOLKIE Retractable Casters.

- **Cleaning:** Keep the caster wheels and swivel mechanisms free from dust, debris, and sawdust. Use a dry cloth or brush to clean regularly.
- **Lubrication:** Periodically apply a small amount of general-purpose lubricant to the swivel bearings and wheel axles to ensure smooth operation. Avoid over-lubricating.
- **Fastener Check:** Regularly inspect all mounting screws, bolts, and nuts. Tighten any loose fasteners to maintain stability and prevent accidents.
- **Wear Inspection:** Check the caster wheels for signs of excessive wear, cracks, or damage. Replace casters if significant wear or damage is observed.

## 9. TROUBLESHOOTING

<b>Problem</b>	<b>Possible Cause</b>	<b>Solution</b>
Casters do not roll smoothly.	Debris in wheels or bearings; lack of lubrication; damaged wheel.	Clean wheels and bearings. Apply lubricant. Inspect for damage and replace if necessary.
Workbench does not lift or lower properly.	Mechanism obstructed; excessive load; damaged pedal assembly.	Clear any obstructions. Ensure load does not exceed 900 lbs. Inspect pedal mechanism for damage.
Casters feel unstable or wobble.	Loose mounting screws; uneven installation; damaged caster.	Tighten all mounting screws. Verify casters are installed evenly. Inspect for damage and replace if necessary.