

FIMEI JMY9020

FIMEI LED Saturn Pendant Light (Model JMY9020) User Manual

Brand: FIMEI | Model: JMY9020

INTRODUCTION

This manual provides detailed instructions for the installation, operation, and maintenance of your FIMEI LED Saturn Pendant Light. Please read this manual thoroughly before installation and retain it for future reference. This pendant light features a unique Saturn ring design, adjustable color temperature (3000K-6000K), stepless dimming, and dual control options via remote and wall switch.

IMPORTANT SAFETY INFORMATION

WARNING: Risk of electric shock. Disconnect power at the circuit breaker before installation or servicing.

- Ensure the main power supply is turned off before beginning installation.
- Installation should be performed by a qualified electrician if you are unsure about electrical wiring.
- Do not connect this fixture to an ungrounded electrical system.
- Do not attempt to modify the fixture. Any modifications may void the warranty and create a safety hazard.
- Handle the light fixture with care to avoid damage.
- This product is designed for indoor use only. Do not expose to moisture or extreme temperatures.

PACKAGE CONTENTS

Verify that all components are present and undamaged before proceeding with installation.

Package List



Image: All components included in the FIMEI LED Saturn Pendant Light package, including the light fixture, remote control, and installation hardware.

- LED Saturn Pendant Light Fixture
- Ceiling Mounting Plate
- Remote Control (2 AAA batteries not included)
- User Manual
- Mounting Screws and Wall Anchors
- Wire Nuts
- Cable Ties

SPECIFICATIONS

| Feature | Detail |
|--------------|----------------------------------|
| Brand | FIMEI |
| Model Number | JMY9020 |
| Material | Iron, Polycarbonate, Alloy Steel |

| | |
|-------------------------|---|
| Light Source | Integrated LED |
| Number of Light Sources | 2 (Central and Outer Ring) |
| Brightness | Up to 1500 Lumens |
| Color Temperature | 3000K (Warm Yellow), 4500K (Natural Warm), 6000K (Cool White) |
| Dimming | Stepless Dimming |
| Control Method | Remote Control, Wall Switch |
| Outer Ring Rotation | 330 degrees |
| Dimensions (L x W x H) | 12.2" x 12.2" x 39" (Adjustable Height) |
| Installation Type | Semi Flush Mount |
| Usage | Indoor |
| Power Source | Corded Electric |
| Required Assembly | Yes |

INSTALLATION INSTRUCTIONS

Follow these steps for safe and proper installation of your pendant light. Ensure power is disconnected at the circuit breaker before starting.

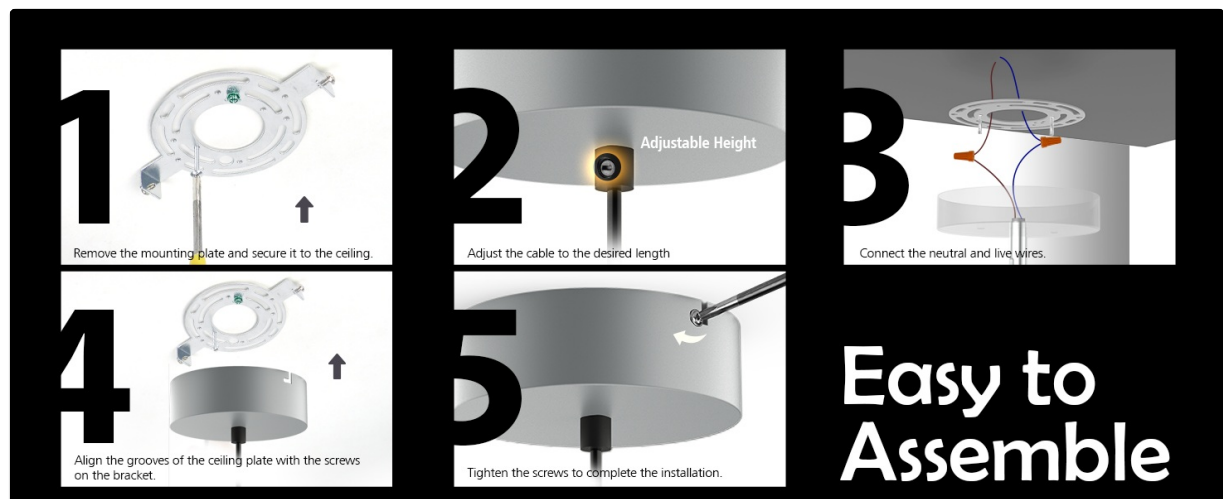


Image: A multi-panel diagram illustrating the five steps for installing the FIMEI LED Saturn Pendant Light, from mounting the plate to securing the fixture.

Step 1: Prepare for Installation

1. Turn off power at the main circuit breaker.
2. Unpack all components and inspect for any damage.
3. Gather necessary tools (screwdriver, wire strippers, ladder, etc.).

Step 2: Mount the Ceiling Plate

- Remove the mounting plate from the light fixture.
- Align the mounting plate with the ceiling junction box and secure it using the provided screws. Ensure it is firmly attached.

Step 3: Adjust Cable Height

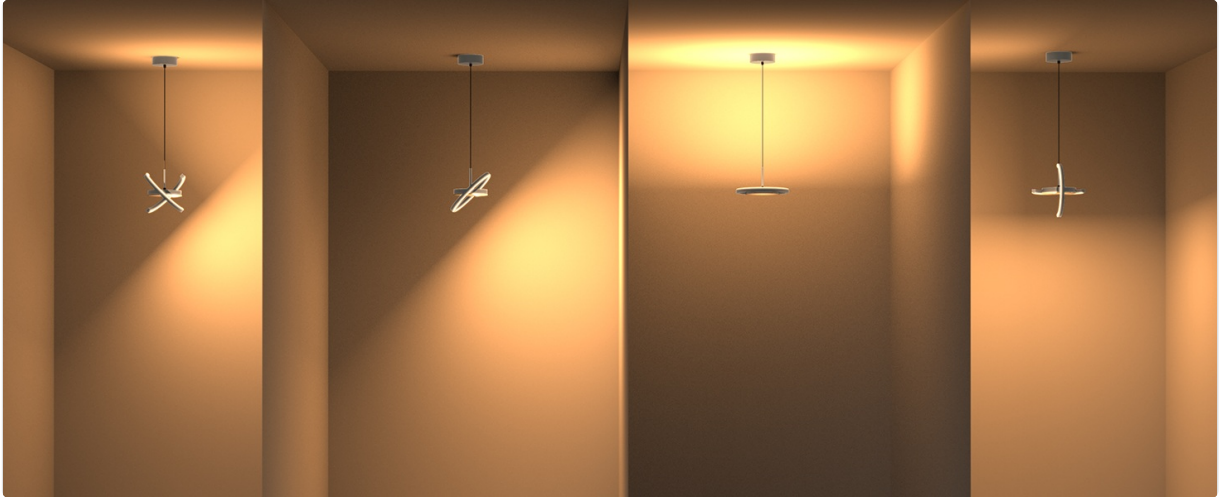


Image: Illustration demonstrating how to adjust the hanging cable length for the pendant light, showing the maximum length of 3.28 feet (100cm).

- Adjust the cable to the desired hanging height. The maximum adjustable length is 3.28 feet (100 cm).
- Secure the cable in place using the locking mechanism on the ceiling canopy.

Step 4: Wire Connections

- Connect the neutral wire (usually white) from the fixture to the neutral wire from the junction box using a wire nut.
- Connect the live wire (usually black) from the fixture to the live wire from the junction box using a wire nut.
- Connect the ground wire (usually green or bare copper) from the fixture to the ground wire from the junction box.
- Ensure all connections are secure.

Step 5: Secure the Fixture

- Carefully tuck all wires into the junction box.
- Align the ceiling canopy with the screws on the mounting bracket.
- Tighten the screws to secure the fixture to the ceiling.

Sloped Ceiling Compatibility



Image: The FIMEI pendant light installed in a kitchen with a sloped ceiling, demonstrating its compatibility.

This pendant light is designed to be compatible with both flat and sloped ceilings, offering versatile installation options.

OPERATING INSTRUCTIONS

1. Power On/Off

Turn the light on or off using the wall switch or the power button on the remote control.

2. Adjusting Brightness (Stepless Dimming)



Image: Visual representation of the stepless dimming capability, showing brightness levels from 10% to 100% for both the central and outer ring lights.

Use the brightness control buttons on the remote control to adjust the light intensity from 10% to 100%. The dimming is stepless, allowing for precise control over the light output.

3. Changing Color Temperature (3 Color Modes)

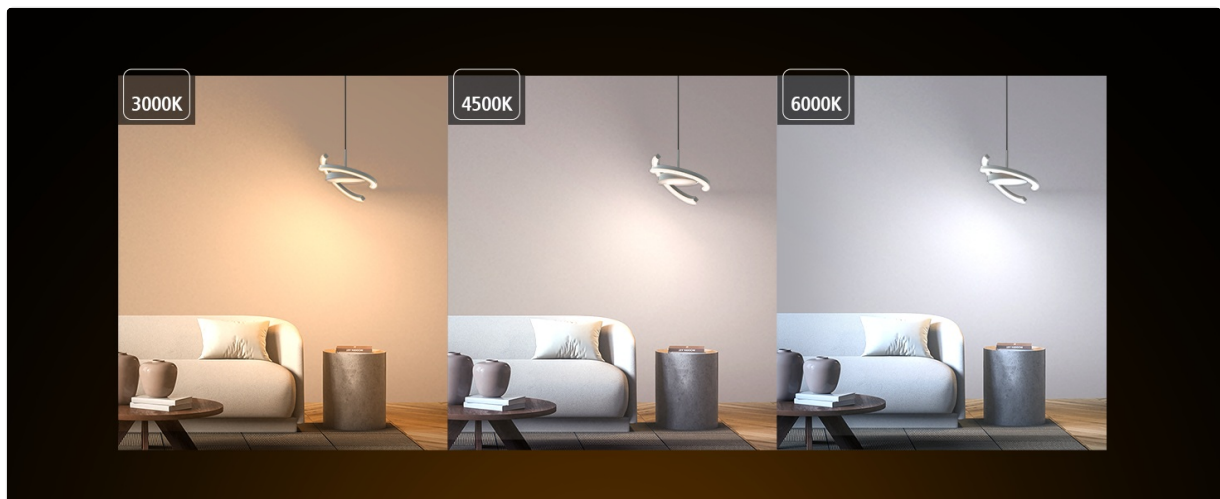


Image: A room illuminated with three different color temperatures: 3000K (warm yellow), 4500K (natural warm light), and 6000K (cool white).

The light offers three color temperature settings:

- **3000K:** Warm Yellow Light
- **4500K:** Natural Warm Light
- **6000K:** Cool White Light

Cycle through these modes using the color temperature button on the remote control or by quickly toggling the wall switch ON/OFF.

4. Dual Control System (Remote & Wall Switch)

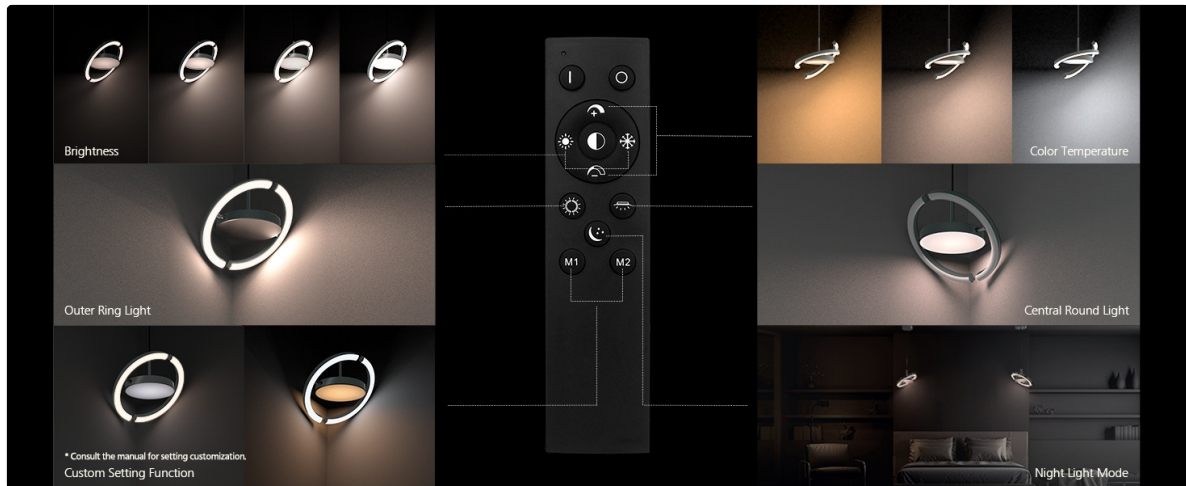


Image: Detailed view of the remote control, highlighting buttons for brightness, color temperature, and custom settings (M1, M2).

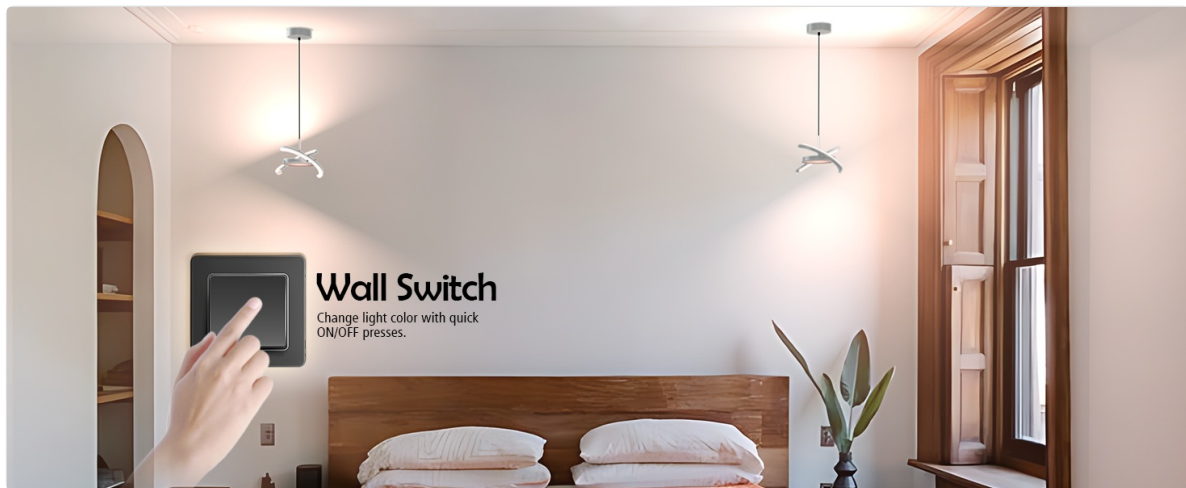


Image: A hand operating a wall switch, indicating its function to change light color with quick ON/OFF presses.

The light can be controlled using both the included remote control and a standard wall switch.

- **Remote Control:** Allows for full control over brightness, color temperature, and independent adjustment of the outer ring and central light. Use M1 or M2 buttons to save customized settings. Requires 2 AAA batteries (not included).
- **Wall Switch:** Quickly toggle the wall switch ON/OFF to cycle through the three color temperature modes (3000K, 4500K, 6000K).

5. Outer Ring Rotation



Vibrant Colors, Appetite Illuminated



Image: The FIMEI pendant light showcasing its outer ring rotated to different positions, indicating a 330-degree rotation capability.

The outer ring of the pendant light can be manually rotated up to 330 degrees. This allows you to direct light precisely where needed and customize the fixture's appearance.

MAINTENANCE

- **Cleaning:** Ensure the power is off before cleaning. Use a soft, dry cloth to wipe the fixture. Do not use abrasive cleaners or solvents, as they may damage the finish or electrical components.
- **Bulb Replacement:** The LED light source is integrated and not user-replaceable. If the LEDs fail, contact customer support for assistance.
- **Remote Control Batteries:** Replace the 2 AAA batteries in the remote control when its functionality diminishes.

TROUBLESHOOTING

| Problem | Possible Cause | Solution |
|---------|----------------|----------|
|---------|----------------|----------|

| | | |
|--------------------------------------|---|--|
| Light does not turn on. | No power supply. Loose wiring connection. Faulty wall switch. | Check circuit breaker and wall switch. Ensure all wire connections are secure (consult a qualified electrician if unsure). Test the wall switch with another device. |
| Remote control is not working. | Dead batteries. Remote not paired (if applicable). Obstruction between remote and light. | Replace batteries (2 AAA). Ensure clear line of sight to the light fixture. Refer to remote pairing instructions (if provided in a separate remote manual). |
| Light flickers or dims unexpectedly. | Unstable power supply. Loose wiring. Incompatible dimmer switch (if not using the provided remote/wall switch dimming). | Check household electrical system. Verify all wiring connections are tight. This fixture uses its own dimming system; do not connect to external dimmer switches. |

WARRANTY AND CUSTOMER SUPPORT

The FIMEI LED Saturn Pendant Light is backed by a **2-year manufacturer's warranty** from the date of purchase. This warranty covers defects in materials and workmanship under normal use.

For warranty claims, technical assistance, or any questions regarding your product, please contact FIMEI customer service. Please have your model number (JMY9020) and proof of purchase ready.

Contact Information: Refer to your purchase documentation or the FIMEI official website for the most current customer support contact details.