



[Manuals.plus](#) /

› [HOSTACK](#) /

› HOSTACK Twin LED Bed Frame with Storage Headboard and Charging Station User Manual

HOSTACK B0FQP83VYY

HOSTACK Twin LED Bed Frame User Manual

Model: B0FQP83VYY

1. INTRODUCTION

Thank you for purchasing the HOSTACK Twin LED Bed Frame with Storage Headboard and Charging Station. This manual provides detailed instructions for assembly, operation, maintenance, and troubleshooting to ensure safe and optimal use of your new bed frame. Please read this manual thoroughly before beginning assembly or use.



Image 1.1: Fully assembled HOSTACK Twin LED Bed Frame in a bedroom setting.

2. SAFETY INFORMATION

WARNING: Failure to follow these safety instructions could result in injury or damage to the product.

- Do not load more than 700 pounds on the bed frame.
- Exercise caution with sharp edges during assembly.
- Keep fingers clear of drawers and the charging station area while in use to prevent pinching.
- Ensure all connections for the LED lights and charging station are secure before use.
- Keep small children and pets away from the assembly area.

3. PACKAGE CONTENTS

Before assembly, verify that all components are present and undamaged. If any parts are missing or damaged, please contact customer support.

Distinctive Design

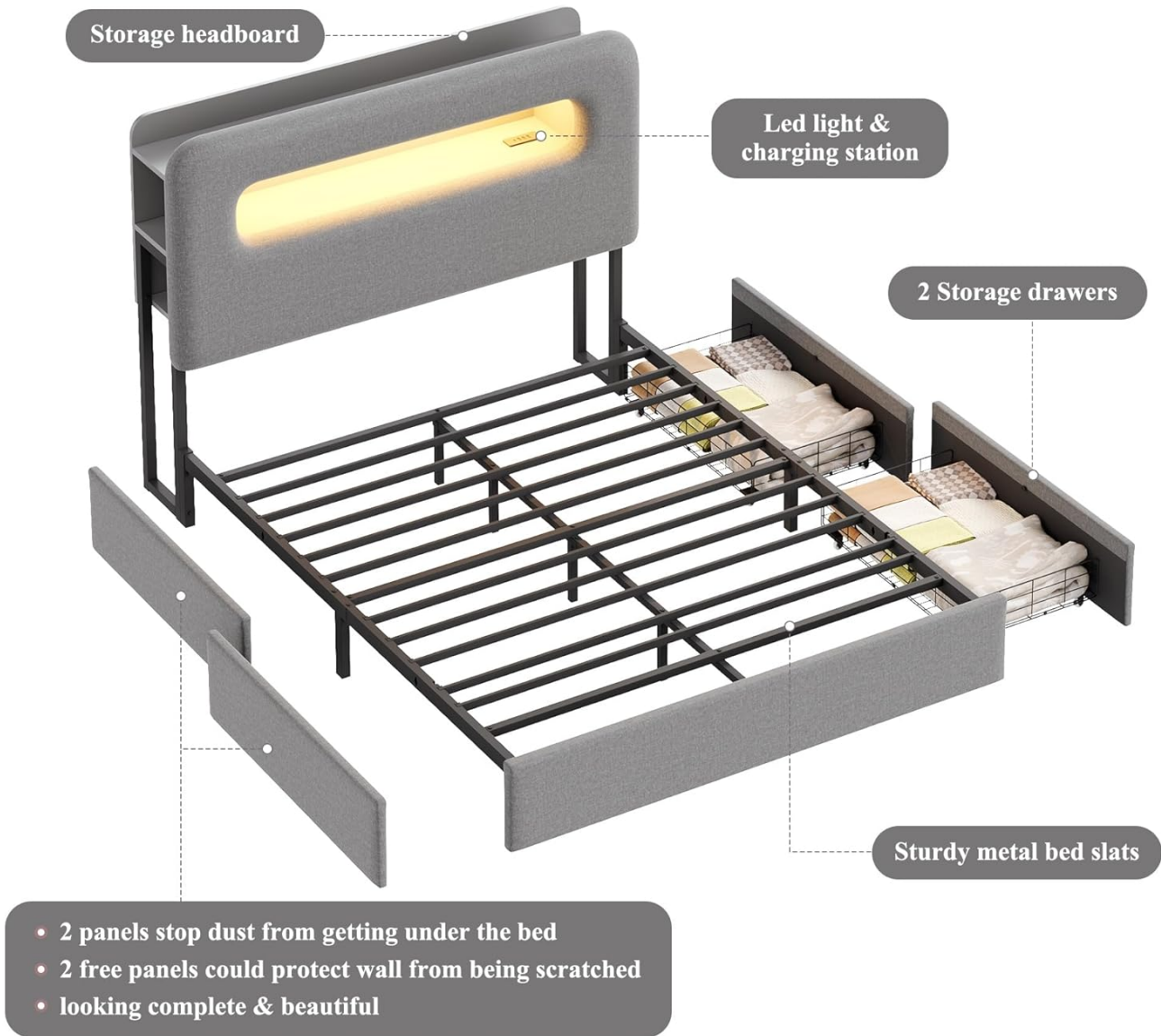


Image 3.1: Exploded view illustrating the main components of the bed frame.

- Upholstered Headboard with LED Lights and Charging Station
- Bed Frame Rails (Left and Right)
- Metal Bed Slats and Support Structure
- 2 Under-Bed Storage Drawers with Wheels
- Hardware Pack (screws, bolts, Allen wrench, etc.)
- Instruction Manual

4. ASSEMBLY INSTRUCTIONS

Estimated assembly time: Approximately 40 minutes. Two people are recommended for easier assembly.

4.1 Preparation

1. Clear a spacious area for assembly.
2. Unpack all components and lay them out on a soft, clean surface to prevent scratches.
3. Identify all parts against the package contents list.

4.2 Step-by-Step Assembly

Follow the detailed diagrams and instructions provided in the included assembly guide. The general steps are:

1. Assemble the main metal frame structure.
2. Attach the upholstered side rails to the frame.
3. Install the wood slats onto the frame. Ensure the noise-free muter bar is correctly positioned for quiet operation.
4. Attach the headboard to the assembled frame.
5. Assemble the two under-bed storage drawers.
6. Insert the drawers into their desired positions under the bed.



Image 4.2: Detail of the under-bed storage drawers, showing interior dimensions (29.5"L x 20.5"W x 5.1"H).

5. SETUP

5.1 Drawer Placement

The two storage drawers can be placed in any of the four positions under the bed (either side, or both sides). Position them according to your room layout and storage needs.

Flexible Drawers

Put drawers according to the room layout

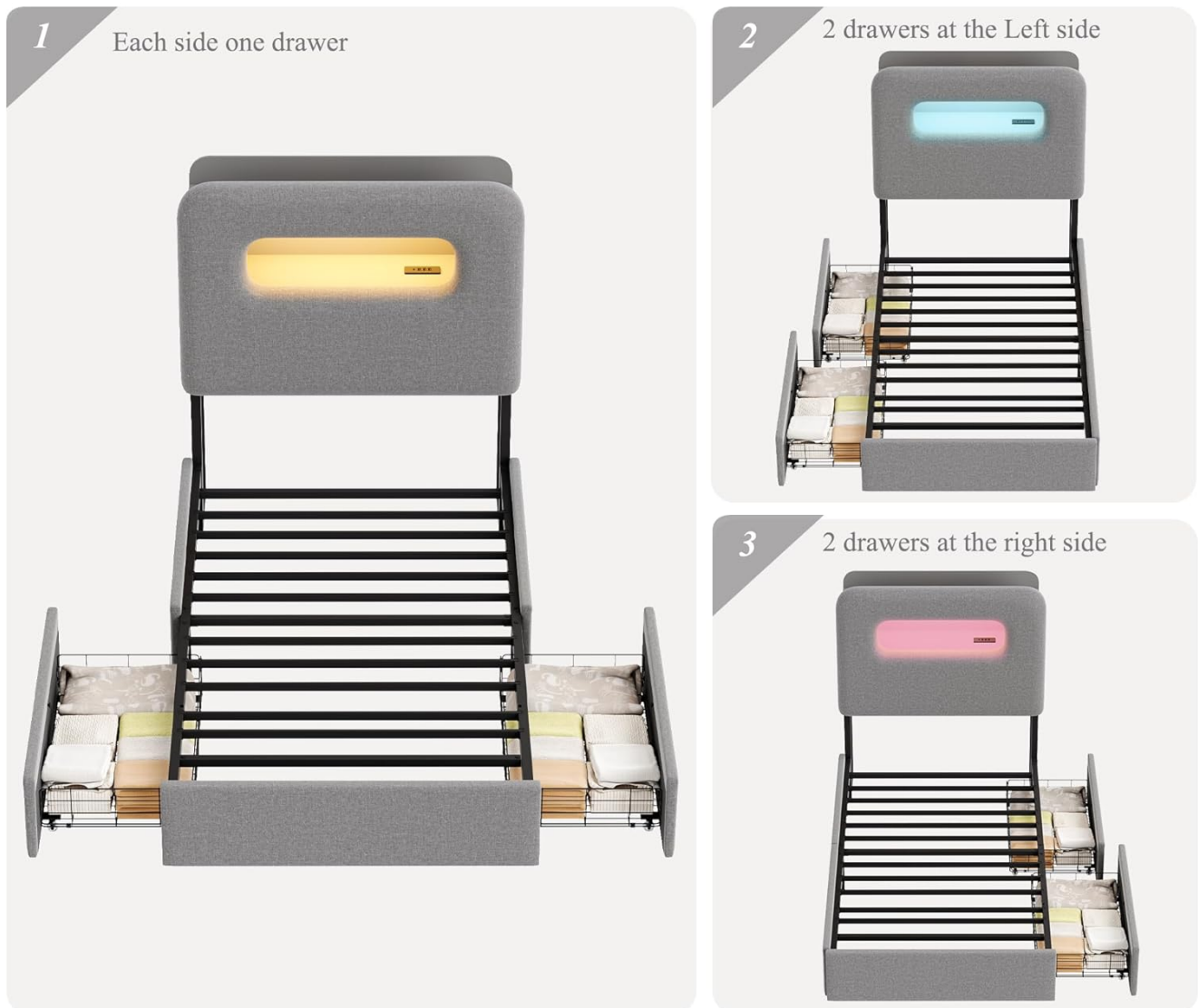


Image 5.1: Illustration of flexible drawer placement options (one on each side, two on left, or two on right).

5.2 Power Connection

Connect the power adapter for the LED lights and charging station to a suitable wall outlet. Ensure the cable is routed safely to avoid tripping hazards.

6. OPERATING INSTRUCTIONS

6.1 LED Lights

The integrated LED lights in the headboard can be controlled via a remote control or a smartphone application. You can customize the light color and ambiance from over 60,000 colors, set timing modes, music modes, and mic modes.



Image 6.1: Overview of LED light features, including remote and app control for color and mode selection.

To use the app control, scan the QR code provided in the packaging or search for the app in your device's app store (compatible with iOS and Android).

6.2 Charging Station

The headboard features a built-in charging station with USB ports. Simply plug your electronic devices into the available ports to charge them.



Image 6.2: Detail of the built-in charging station within the headboard's storage compartment.

6.3 Storage Drawers

The two under-bed drawers are designed for smooth operation on wheels. They provide ample storage space for various items. The buckle design effectively secures the drawer in place when pushed under the bed.



Image 6.3: The bed frame with both under-bed drawers extended, showcasing storage capacity.

Product Features Overview Video

Video 6.4: An official product video from Seleadc (Seller) demonstrating the features of the bed frame, including LED lights, charging station, and storage drawers. This video provides a visual guide to the product's functionality and design.

7. MAINTENANCE

7.1 Cleaning the Upholstery

The velvet upholstery can be cleaned with a soft, damp cloth. For spills, blot immediately with a clean, dry cloth. Avoid using harsh chemicals or abrasive cleaners, as these may damage the fabric.

7.2 Frame Care

Wipe the metal frame and wooden slats with a dry or slightly damp cloth to remove dust. Periodically check all screws and bolts to ensure they remain tight. Retighten if necessary.

7.3 Drawer Maintenance

Ensure the drawer wheels are free of debris for smooth operation. If drawers become stiff, clean the wheel tracks and wheels.

8. TROUBLESHOOTING

Problem	Possible Cause	Solution
LED lights not working	Power cable disconnected; remote/app not paired; faulty LED strip.	Check power connection; re-pair remote/app; contact support if faulty.
Charging station not providing power	Power cable disconnected; device cable faulty; charging station malfunction.	Ensure power is connected; try a different charging cable; contact support.
Bed frame is noisy/squeaks	Loose bolts; incorrect slat placement; missing noise-free muter bar.	Tighten all bolts; ensure slats are correctly seated; verify muter bar is in place.
Drawers are difficult to open/close	Debris in wheel track; damaged wheels; drawer overloaded.	Clean wheel tracks; inspect wheels for damage; reduce drawer load.

9. SPECIFICATIONS

Brand: HOSTACK

Model: B0FQP83VYY

Size: Twin

Product Dimensions: 84.6"L x 40.9"W x 44.5"H

Special Features: Storage Headboard, 2 Drawers, Charging Station, LED Lights

Color: Grey

Included Components: Headboard, Drawers, Rails, Wood Slats

Compatible Mattress Size: Twin

Assembly Required: Yes (estimated 40 minutes)

Headboard Material: Velvet

Max Loading Capacity: 700 Lbs

Drawer Interior Dimensions: 29.5"L x 18.1"W x 5.1"H

10. WARRANTY AND SUPPORT

For warranty information or technical support, please refer to the documentation included with your purchase or contact the seller directly. Keep your purchase receipt for warranty claims.

Manufacturer: HOSTACK