

## ATOTOZONE AC-44F20

# ATOTOZONE AC-44F20 Wireless Remote Control Instruction Manual

## 1. PRODUCT OVERVIEW

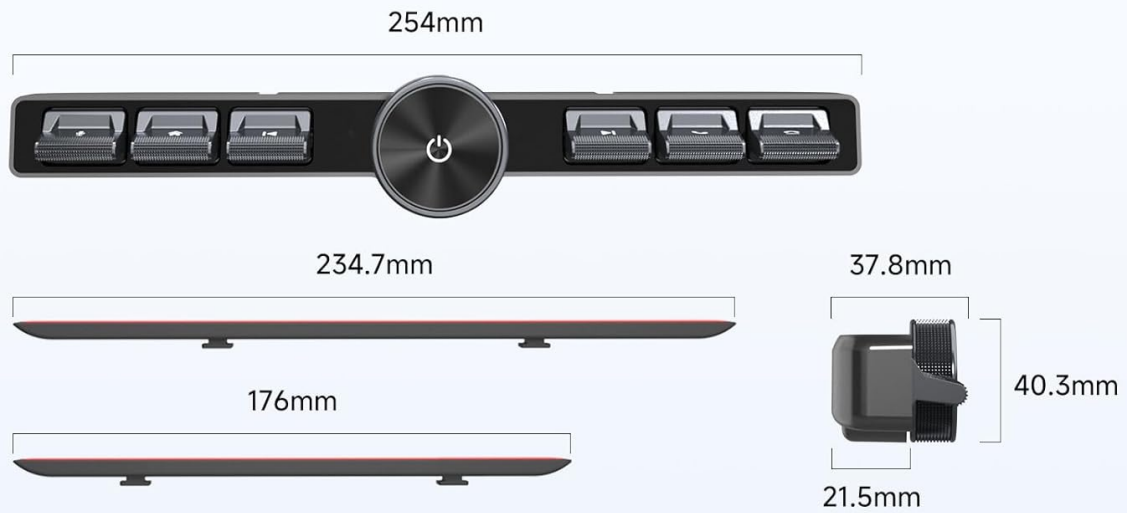
The ATOTOZONE AC-44F20 is a versatile wireless remote control designed to enhance your in-car media experience. Featuring backlit physical buttons and a rotary knob, it offers effortless operation and customizable shortcuts for a safer, more focused driving experience. It is compatible with a wide range of head units that support Steering Wheel Control (SWC) learning.

### Key Features:

- **Universal Compatibility:** Works with ATOTO head units (F7, A6, A5L, S8 except S8 PN, X10, V10 Series) and most third-party car stereos supporting SWC learning.
- **Physical Backlit Buttons:** Seven physical buttons and a rotary knob with soft backlighting for easy, blind operation, ensuring focus on the road.
- **USB-C Charging & Long Battery Life:** Built-in lithium battery recharges quickly via USB-C, providing 3-4 months of typical use per charge. Auto backlight shut-off extends runtime.
- **Personalized Shortcuts:** Map buttons and the rotary knob to favorite actions like launching CarPlay/Android Auto, skipping tracks, or adjusting volume.
- **Flexible Installation:** Mounts easily on the dashboard, screen front, or under a floating screen using high-strength adhesive strips.
- **High-Strength Adhesive Mounting:** Ensures a firm, lasting bond resistant to loosening or peeling.

## 2. PRODUCT COMPONENTS

The ATOTOZONE AC-44F20 package includes the following items:



Note: Dimensions may vary by  $\pm 1$ mm.

## What's in the Box

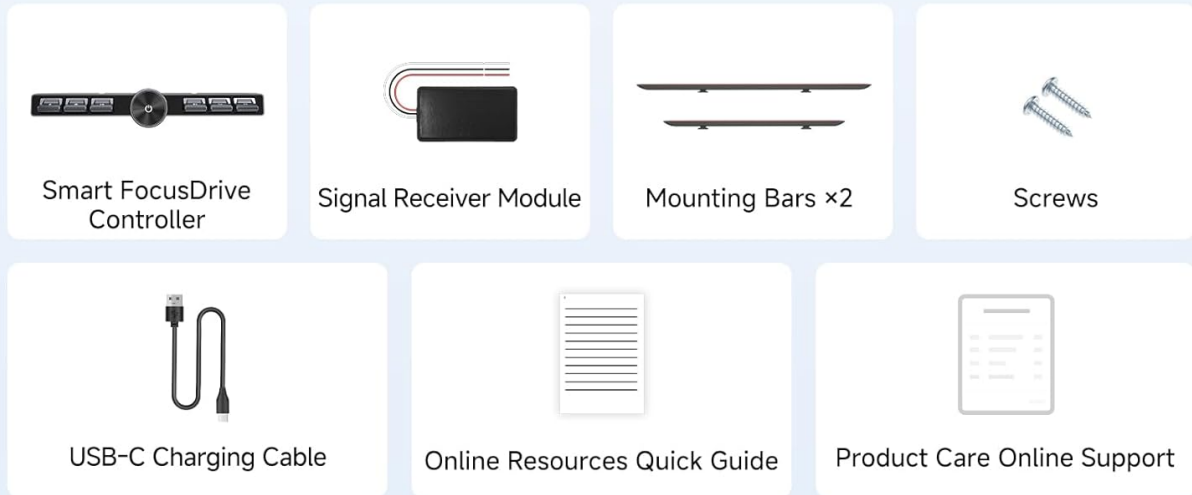


Image: Contents of the ATOTOZONE AC-44F20 package.

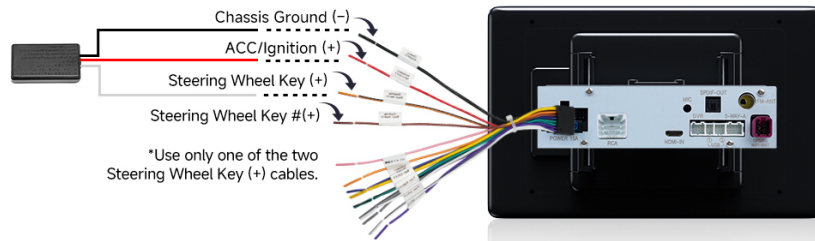
- Smart FocusDrive Controller
- Signal Receiver Module
- Mounting Bars (x2)
- Screws
- USB-C Charging Cable
- Online Resources Quick Guide
- Product Care Online Support Information

### 3. INSTALLATION GUIDE

#### 3.1 Signal Receiver Wiring

The signal receiver module connects to your car stereo's wiring harness. Ensure your head unit supports Steering Wheel Control (SWC) learning and has the necessary input wires.

## Signal Receiver Module Wiring Guide



\*Please refer to your stereo's wiring diagram for details

*Image: Signal Receiver Module Wiring Diagram. Please refer to your stereo's wiring diagram for specific details.*

1. Connect the signal receiver's red wire to the ACC/Ignition (+) wire of your car stereo.
2. Connect the signal receiver's black wire to the Chassis Ground (-) wire of your car stereo.
3. Connect the signal receiver's white wire to one of the Steering Wheel Key (+) cables (Key 1 or Key 2) on your car stereo. Use only one of the two Steering Wheel Key (+) cables.

### Video: Signal Receiver Wiring and Basic Operation

Your browser does not support the video tag.

*Video: Demonstrates connecting the signal receiver and basic button functions. (Source: Jaesien)*

## 3.2 Controller Mounting

The AC-44F20 offers flexible mounting options to suit various dashboard layouts and personal preferences.

### Flexible Mounting—Fits Any Dashboard

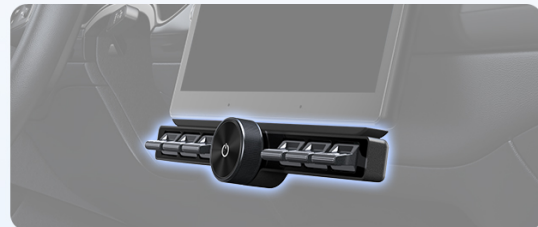
Mount on the dashboard or below your screen—install wherever fits your habits.



Dashboard / Screen-Front Mount



Below Floating Screen



*Image: Flexible Mounting Options.*

### Option A: Flexible Mounting on Dashboard or Screen Front

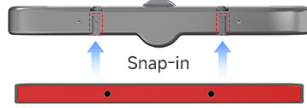
## Flexible Mounting on Dashboard or Screen Front

For direct mounting onto flat surfaces like the dashboard or screen

### Option A

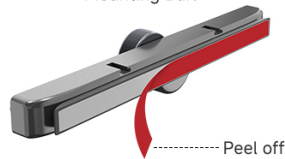
#### Step 1

Snap the Mounting Bar into the back of the Controller.



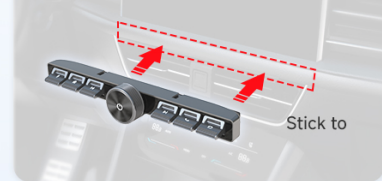
#### Step 2

Peel the adhesive backing from the Mounting Bar.



#### Step 3

Stick to your chosen spot.



Note: Mounting the Controller on the screen front may cover the touchscreen's original buttons.

*Image: Dashboard/Screen-Front Mounting Steps.*

1. Snap a Mounting Bar into the back of the Controller.
2. Peel the adhesive backing from the Mounting Bar.
3. Stick the controller to your chosen spot on the dashboard or screen front.

*Note: Mounting the Controller on the screen front may cover the touchscreen's original buttons.*

## Option B: Seamless Mounting Under Floating Display

## Seamless Mounting Under Floating Display

No obstruction—Controller stays within reach and screen remains fully visible.

### Option B

#### Step 1

Snap the Mounting Bar into the top of the Controller.



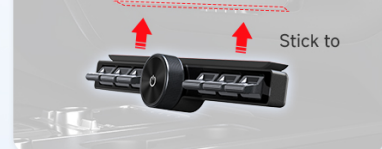
#### Step 2

Peel the adhesive backing from the Mounting Bar.



#### Step 3

Stick it to the underside of the Floating Display.



*Image: Under-Floating-Screen Mounting Steps.*

1. Snap a Mounting Bar into the top of the Controller.
2. Peel the adhesive backing from the Mounting Bar.
3. Stick the controller to the underside of the floating display.

Ensure the High-Strength Adhesive is applied to a clean, dry surface for a firm, lasting bond.

## High-Strength Adhesive

Stays Firm Through Repeated Attachment and Detachment



*Image: High-Strength Adhesive for secure mounting.*

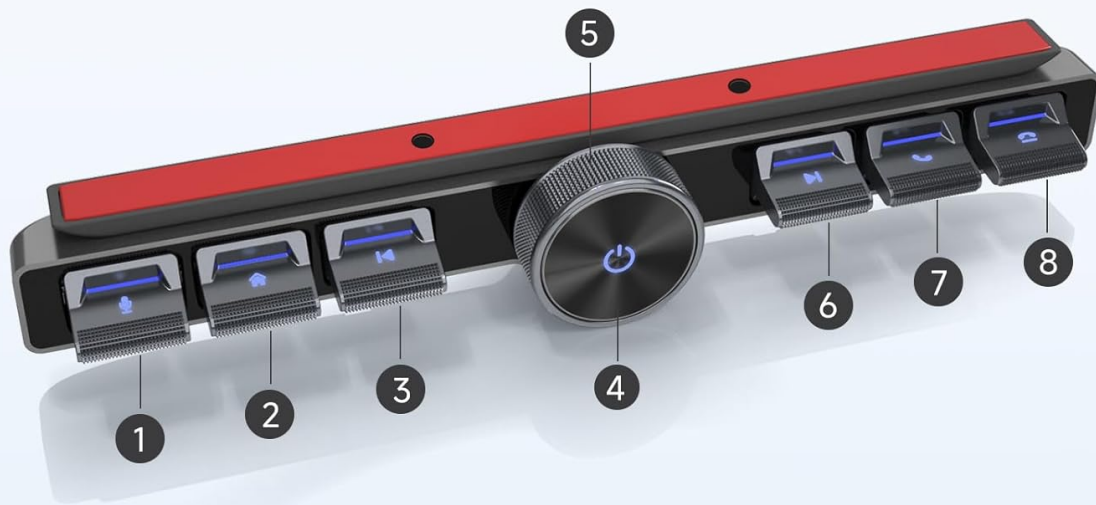
## 4. OPERATION

### 4.1 Button Functions

The AC-44F20 features seven physical buttons and a precision rotary knob, all designed for blind operation to keep your eyes on the road.

# 7 Physical Buttons & Precision Volume Knob

Buttons and knob designed for blind operation



- |            |          |              |                    |
|------------|----------|--------------|--------------------|
| 1.  Voice  | 2.  Home | 3.  Previous | 4.  Power          |
| 5.  Volume | 6.  Next | 7.  Answer   | 8.  Hang Up/Reject |

Button functions can be customized

*Image: AC-44F20 Button Layout and Default Functions.*

- **1. Voice:** Activates voice assistant.
- **2. Home:** Navigates to the home page.
- **3. Previous:** Skips to the previous track.
- **4. Power:** Turns the unit on/off.
- **5. Volume:** Rotary knob for volume adjustment.
- **6. Next:** Skips to the next track.
- **7. Answer:** Answers incoming calls.
- **8. Hang Up/Reject:** Ends or rejects calls.

*Button functions can be customized via SWC Learning.*

## 4.2 Steering Wheel Control (SWC) Learning

To customize the functions of the AC-44F20 buttons, you need to perform SWC learning on your car stereo. The steps are generally as follows:

## SWC Learning Operation

SWC learning steps are as follows:

**Step 1**  
Enter SWC Learning Interface



On your head unit, enter SWC learning mode.

**Step 2**  
Map Functions One by One



- ① Tap a function on the screen (turns grey)
- ② Press the corresponding button on your Controller
- ③ Repeat for all buttons and both directions of the rotary knob.  
\*You can leave any button unassigned if you prefer.

**Step 3**  
Save and Exit



Your Controller is now ready to control your stereo.

*\*For third-party brand head units, refer to their user manual for SWC learning.*

*Image: SWC Learning Operation Steps.*

1. On your head unit, enter the SWC learning mode.
2. Tap a function on the screen (it will turn grey).
3. Press the corresponding button on your AC-44F20 Controller.
4. Repeat for all buttons and both directions of the rotary knob. You can leave any button unassigned if you prefer.
5. Save and Exit. Your controller is now ready to control your stereo.

*For third-party brand head units, refer to their user manual for SWC learning.*

## 4.3 Charging the Controller

The AC-44F20 features a built-in lithium battery that recharges via USB-C. A full charge typically takes about 1 hour and provides up to 4 months of use (based on typical usage of 4-5 hours/day).



**Effortless Power, Extended Use**  
Charge in 1 Hour • Enjoy Up to 120 Days

1 hr full charge **100%**

Up to 4 months use **≈ 120 days**

\*Typical use ~4-5 hrs/day. Actual results may vary.

USB-C Charging Port

*Image: USB-C Charging Port and Battery Life.*

## 4.4 Backlight Feature

The buttons on the AC-44F20 are backlit for clear visibility, even at night. The backlight will automatically turn off after 5 seconds of inactivity to conserve power.

## Backlit Buttons—Always Clear, Even at Night

The backlight will automatically turn off after 5 seconds of inactivity to save power.



Image: Backlit Buttons for Night Operation.

## 5. TROUBLESHOOTING

### 5.1 Controller Not Responding to Operations

If your AC-44F20 remote control is not responding, consider the following potential causes and solutions:

1. **Dead or improperly installed battery:** The controller uses a watch battery. Ensure the battery is correctly installed and has sufficient charge. Replace the battery if it is dead.
2. **Receiver wiring is incorrectly installed:** Double-check the wiring connections of the signal receiver module to your car stereo's harness. Ensure the ACC/Ignition, Ground, and Steering Wheel Key wires are correctly connected as per the wiring diagram in Section 3.1.
3. **The controller has not learned the Key Mapping correctly:** Confirm that the SWC Learning process (Section 4.2) was performed accurately. Repeat the key mapping procedure if necessary.
4. **Not compatible with original steering wheel controls:** The AC-44F20 replicates the functionality of original steering wheel controls. There is no need to install both; simply choose one to use.

#### Video: Troubleshooting the ATOTO AC-44F8 (General Troubleshooting Steps)

Your browser does not support the video tag.

*Video: Provides general troubleshooting steps for wireless remote controls, including battery check, wiring verification, and key mapping. (Source: AutoSmartHK)*

## 6. SPECIFICATIONS

Feature	Description
Brand	ATOTOZONE
Model	AC-44F20
Special Feature	Backlit, Physical button, Rechargeable
Color	Black
Connectivity Technology	Wireless (BT Wireless Connection)

Maximum Range	3 Meters
Battery Type	Lithium-Ion Polymer
Compatible Devices	ATOTO head units (F7, A6, A5L, S8 except S8 PN, X10, V10 Series), OEM and aftermarket models with SWC learning.

### Product Dimensions

Compact design fits anywhere, blends seamlessly with your car's interior.



Note: Dimensions may vary by  $\pm 1$ mm.

*Image: Product Dimensions.*

## 7. PRODUCT CARE AND SUPPORT

ATOTOZONE provides 12 months of product support from the date of purchase. Multilingual online manuals are accessible; please check your package for details.

For any inquiries or assistance, please refer to the online resources provided with your product or contact ATOTOZONE customer support.