

NEEWER A10L

NEEWER BASICS Mini Camera Flash with 2W LED Video Light (Model A10L) Instruction Manual

Model: A10L | Brand: NEEWER

INTRODUCTION

Thank you for choosing the NEEWER BASICS Mini Camera Flash with 2W LED Video Light (Model A10L). This compact and versatile lighting solution is designed to enhance your photography and videography with its powerful flash and continuous LED light capabilities. This manual provides detailed instructions for setup, operation, and maintenance to ensure optimal performance.



Image: The NEEWER BASICS Mini Camera Flash A10L, featuring both the flash head and the LED video light panel, with a diffuser attached to the flash.

WHAT'S IN THE BOX

- 1 x NEEWER BASICS Mini Camera Flash (A10L)
- 1 x Diffuser
- 1 x USB A to USB C Cable

SPECIFICATIONS

Model A10L	Main Features Compact/Lightweight/2 In 1	Guide Number (GN) 10	LED Video Light
Item Type Camera Flash with Video Light	Main Material Plastic	Power Levels 4 (1/8, 1/4, 1/2, 1/1)	Power 2W
Color Black	Dimensions 3.86"x2.68"x1.26"/9.8x6.8x3.2cm	Built in Battery Capacity DC 3.7V 800mAh	Brightness Levels 4
Compatibility For Cameras with Hot Shoe	Weight 3.88oz/110g	Flash Times 550 Flashes at Full Power	LED Qty 14 Warm +14 Cool
Application Portrait/Close up Shots	Flash Mode M/Manual	Recycling Time 0.5s-3.5s	Color Temperature 2700K/4500K/6000K/7500K

PACKAGE CONTENTS

		
1 x Mini Camera Flash	1 x Diffuser	1 x USB A to USB C Cable

Image: A visual representation of the items included in the NEEWER BASICS Mini Camera Flash A10L package: the flash unit, a white diffuser, and a USB-A to USB-C charging cable.

PRODUCT OVERVIEW & FEATURES

The A10L is a compact and lightweight camera flash with an integrated 2W LED video light. It features a guide number of 10 (ISO 100, meters) and a stable 6500K±300K color temperature for flash. The LED video light offers 4 color temperatures and 4 dimming levels with a high CRI of 95+ for accurate color reproduction.

- **Compact Design:** Weighing just 3.88oz/110g, it's highly portable.
- **2-in-1 Functionality:** Serves as both a camera flash and a continuous LED video light.
- **Adjustable Power:** Flash intensity can be set from 1/1 to 1/8.
- **Versatile LED Light:** 4 color temperatures (2700K/4500K/6000K/7500K) and 4 dimming levels.
- **High CRI:** 95+ CRI ensures natural and accurate color rendering.
- **Fast Recycling:** Flash recycling time of 0.5-3.5 seconds.
- **Built-in Battery:** 800mAh rechargeable battery supports up to 550 flashes at full power.

- **Standard Hot Shoe:** Compatible with most DSLR and mirrorless cameras with a single contact hot shoe.



BASICS
NEEWER BASICS Series

GN10

CAMERA FLASH WITH FILL LIGHT
Capture well lit images effortlessly, indoors or outdoors.

3.88oz / 110g
Ultra Lightweight Design

 **550**
Full Power Flashes

 **DC3.7V 800mAh**
Battery Capacity

 **0.5s-3.5s**
Recycling Time

 **6500K ±300K**
Color Temperature

Image: The NEEWER BASICS Mini Camera Flash A10L attached to a camera, emphasizing its lightweight design (3.88oz/110g) and core features such as Guide Number 10, 550 full power flashes, 800mAh battery capacity, and a quick recycling time.

SETUP

Mounting the Flash

1. Ensure your camera is powered off.
2. Slide the A10L's hot shoe mount into your camera's standard hot shoe.
3. Secure the flash by tightening the locking wheel on the hot shoe mount.

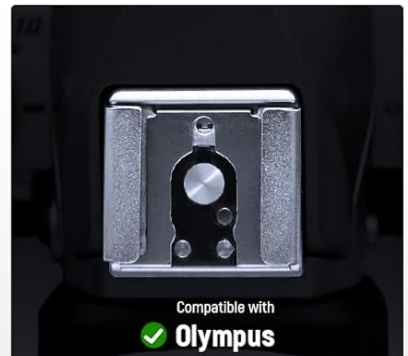
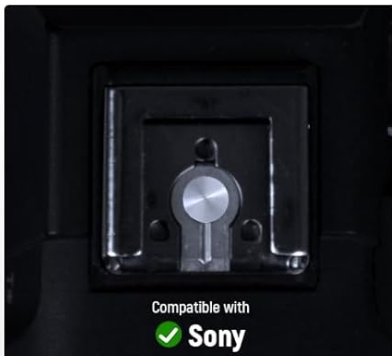
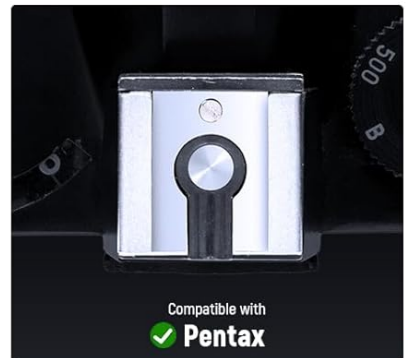
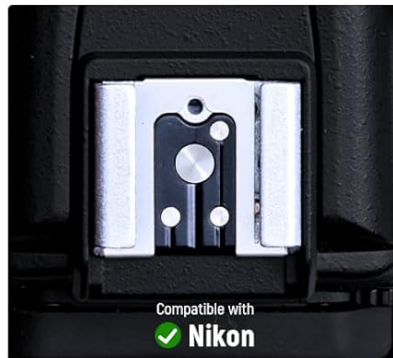
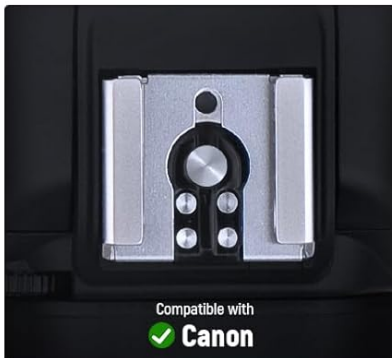
WIDE COMPATIBILITY

Compatible with standard
single contact hot shoe cameras



✓ With Touchpoint

✗ Without Touchpoint

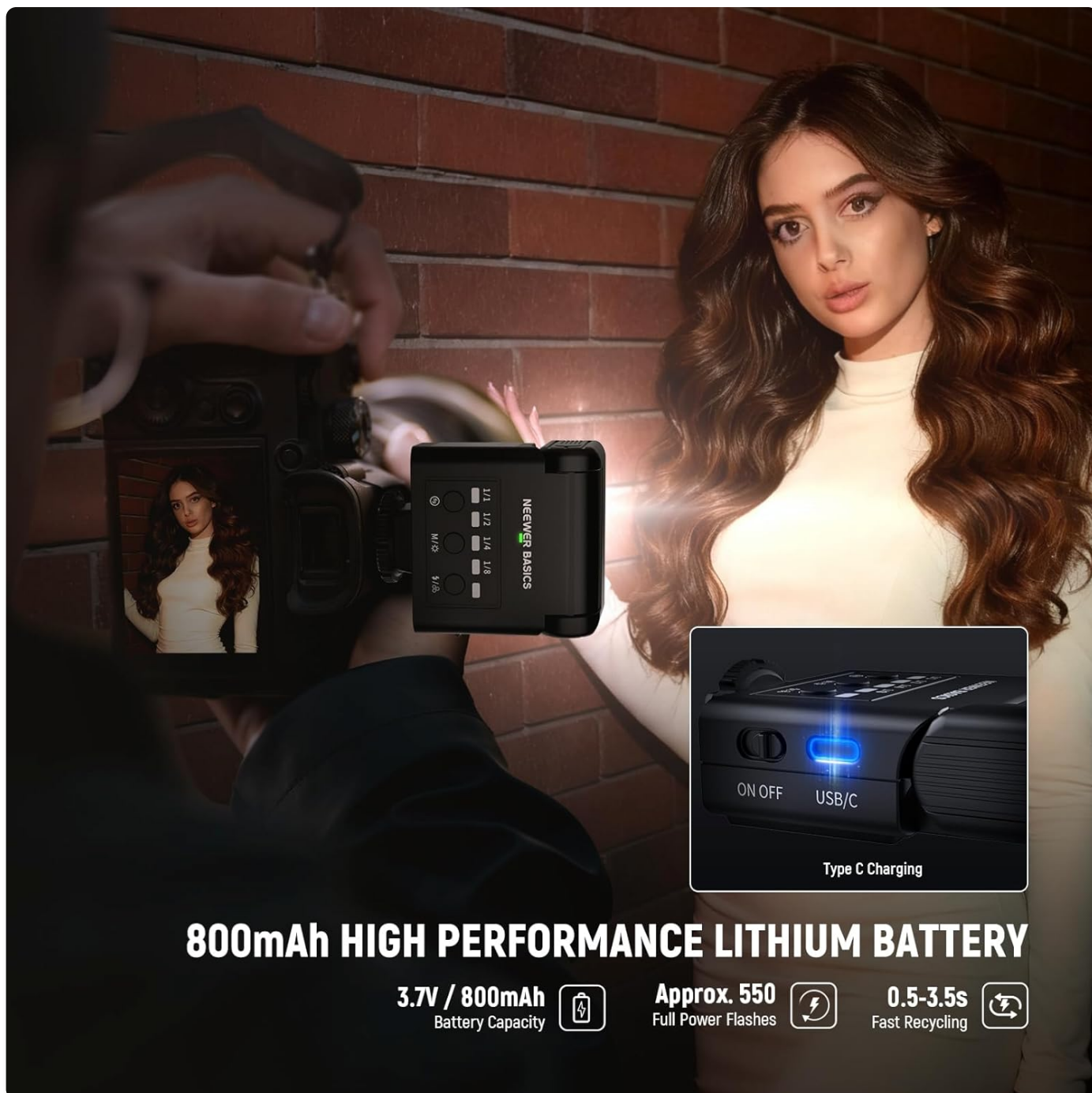


Note: The A10L speedlight does not support TTL or camera menu setting function

Image: An illustration demonstrating the wide compatibility of the A10L flash with standard single contact hot shoe cameras from brands such as Canon, Nikon, Sony, Fujifilm, Pentax, and Olympus. It clarifies the difference between hot shoes with and without a touchpoint.

Initial Battery Charge

For optimal battery longevity, fully charge the device before first use. Connect the provided USB A to USB C cable to the flash unit and a suitable USB power source.



800mAh HIGH PERFORMANCE LITHIUM BATTERY

3.7V / 800mAh
Battery Capacity



Approx. 550
Full Power Flashes



0.5-3.5s
Fast Recycling



Image: A detailed view of the NEEWER BASICS Mini Camera Flash A10L, highlighting the USB-C charging port and the power button. The image also displays key battery specifications: 3.7V/800mAh capacity, approximately 550 full power flashes, and a fast recycling time of 0.5-3.5 seconds.

OPERATING INSTRUCTIONS

Power On/Off

Press and hold the power button (usually marked with a circle and a line) to turn the unit on or off.

Flash Mode

The A10L operates as a manual flash. Adjust flash intensity using the dedicated buttons (1/1, 1/2, 1/4, 1/8) to achieve desired illumination. The flash has a guide number of 10 (ISO 100, meters).



4

LEVEL DIMMING

4 level dimming (Full to 1/8), precise light control from soft glow to bright illumination for diverse needs.

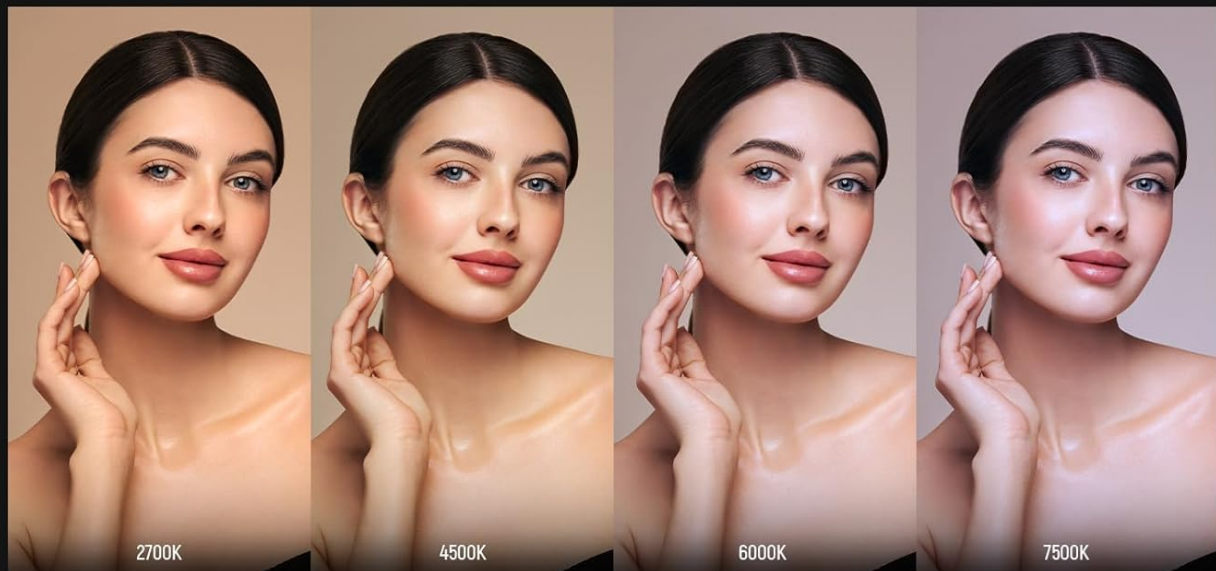
1/1 - 1/8

*For best results, use the flash within 3 meters.

Image: A top-down view of the NEEWER BASICS Mini Camera Flash A10L mounted on a camera, illustrating the four power levels (1/1, 1/2, 1/4, 1/8) for dimming, allowing precise control over flash intensity.

LED Video Light Mode

The A10L doubles as a 2W LED light. Use the mode button to cycle through 4 color temperature settings (2700K, 4500K, 6000K, 7500K) and 4 dimming levels for continuous lighting. The high CRI of 95+ ensures accurate color reproduction.



4 COLOR TEMPERATURE



4
Brightness Levels



2W
Maximum Power



14 Warm +14 Cool
LED Qty



2700K/4500K/6000K/7500K
Temperatura colore



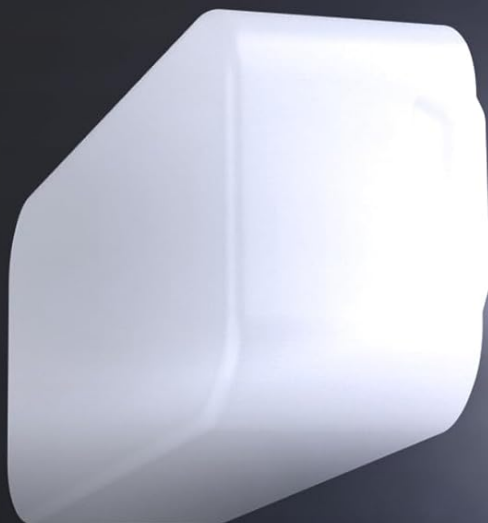
CRI 95 TRUE COLOR REPRODUCTION

Note: The flash and the fill light cannot be used simultaneously.

Image: A visual comparison of different color temperatures (2700K, 4500K, 6000K, 7500K) provided by the A10L's LED video light, showcasing its ability to produce true colors with a CRI of 95. Note: The flash and fill light cannot be used simultaneously.

Using the Diffuser

Attach the included diffuser to the flash head to create softer, more even, and natural lighting effects, ideal for portraits and close-up shots.



SOFT LIGHTING DIFFUSER

A perfectly fitted diffuser creates even, soft, and natural lighting effects for modeling and portraits



With Diffuser



Without Diffuser

Image: A visual demonstration of the soft lighting diffuser's effect when used with the A10L flash. The image shows a side-by-side comparison of a portrait with and without the diffuser, illustrating the softer and more natural lighting achieved with the accessory.

Compatibility Notes

The A10L speedlight does not support TTL (Through The Lens) or camera menu setting functions. It is a manual flash. It is NOT compatible with Sony ZV-1F, A9III, A99, A77, A350. NOT compatible with Canon EOS Rebel SL3, 250D, T7, 1500D, 2000D, T100, 3000D, 4000D, 200DII, R7, R6II, R8, R10, R50. NOT compatible with Fuji X-A3, X100F, X100T.

BATTERY INFORMATION

The A10L features a built-in 800mAh rechargeable lithium battery. A full charge provides approximately 550 flashes at full power. The recycling time ranges from 0.5 to 3.5 seconds depending on the power level and battery charge. To charge, connect the unit via its USB-C port using the provided cable. The charging indicator light will provide status updates.

SPECIFICATIONS

Model	A10L
Item Type	Camera Flash with Video Light
Color	Black
Compatibility	For Cameras with Standard Hot Shoe (excluding specific models listed in compatibility notes)
Application	Portrait/Close-up Shots, Low Light Environments, Still Life, Product Photography
Main Features	Compact/Lightweight/2 in 1
Main Material	Plastic
Dimensions	3.86"x2.68"x1.26" / 9.8x6.8x3.2cm
Weight	3.88oz/110g
Flash Mode	M/Manual
Guide Number (GN)	10
Power Levels (Flash)	4 (1/8, 1/4, 1/2, 1/1)
Built-in Battery Capacity	DC 3.7V 800mAh
Flash Times	550 Flashes at Full Power
Recycling Time	0.5-3.5s
LED Video Light Power	2W
LED Brightness Levels	4
LED Quantity	14 Warm + 14 Cool
LED Color Temperature	2700K/4500K/6000K/7500K

TROUBLESHOOTING

- **Flash not firing:** Ensure the unit is powered on and fully charged. Check if it's securely mounted on the camera's hot shoe.
- **Light output too strong/weak:** Adjust the flash power levels (1/1 to 1/8) or LED dimming levels as needed.
- **Incompatible camera:** Refer to the compatibility notes in the "Operating Instructions" section. This flash does not support TTL or camera menu control.
- **Slow recycling time:** This can occur when the battery charge is low. Recharge the unit.

SAFETY INFORMATION

This product may contain chemicals known to the State of California to cause cancer and birth defects or other reproductive harm. For more information, please visit www.p65warnings.ca.gov.

OFFICIAL PRODUCT VIDEO

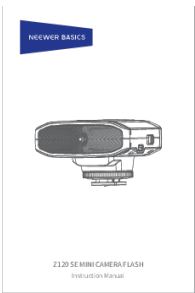
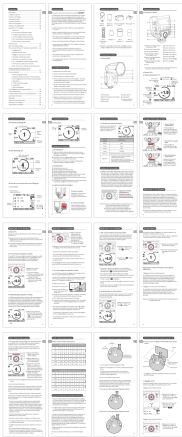
Watch this official video from NEEWER for a comprehensive overview of the A10L Mini Camera Flash with 2W LED Video Light.

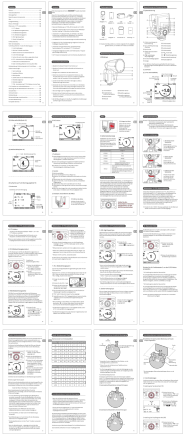
Your browser does not support the video tag.

Video: An official product video showcasing the features and usage of the NEEWER BASICS Mini Camera Flash with 2W LED Video Light (Model A10L).

© 2025 NEEWER. All rights reserved.
For further support, please visit the [NEEWER Store on Amazon](#).

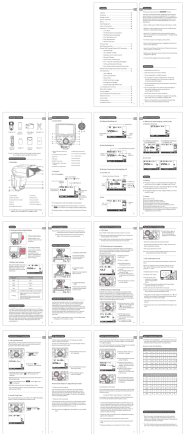
Related Documents - A10L

	<p>NEEWER BASICS Z120 SE MINI CAMERA FLASH Instruction Manual</p> <p>Instruction manual for the NEEWER BASICS Z120 SE MINI CAMERA FLASH, covering safety, product parameters, operating modes, and support information.</p>
	<p>Neewer Z2-C Portable Flash - User Manual and Specifications</p> <p>Comprehensive guide to the Neewer Z2-C portable camera flash. Learn about its features, operation modes (TTL, Manual, Multi), wireless control, HSS, and technical specifications for professional photography.</p>



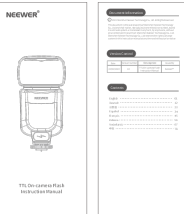
[Neewer Z2-C Speedlite Flash User Manual](#)

Comprehensive guide to operating the Neewer Z2-C Speedlite Flash, covering its features, setup, usage, and maintenance for photographers.



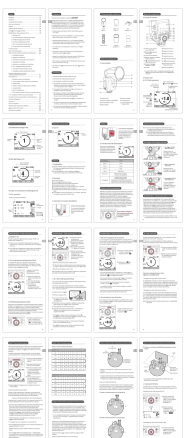
[Neewer Z760-C TTL Speedlite User Manual](#)

Comprehensive guide to the Neewer Z760-C TTL Speedlite, covering setup, operation, features, safety precautions, and specifications for photography.



[Neewer NW635/NW-670/750II TTL On-Camera Flash Instruction Manual](#)

Comprehensive guide to the Neewer NW635, NW-670, and 750II TTL on-camera flashes, covering setup, modes (TTL, Manual, Stroboscopic), slave modes, and accessories for optimal photography.



[Neewer Z2-C Flash User Manual and Guide](#)

Comprehensive user manual for the Neewer Z2-C camera flash, detailing features, specifications, operation modes (TTL, Manual, Stroboscopic), wireless functionality, safety precautions, and troubleshooting tips.