

## CALEX 4301005500

# CALEX Falerna Rechargeable Up & Down Wall Lamp User Manual

Model: 4301005500

## 1. INTRODUCTION

Thank you for choosing the CALEX Falerna Rechargeable Up & Down Wall Lamp. This manual provides essential information for the safe and efficient use of your new lighting product. Please read these instructions carefully before installation and operation, and retain them for future reference.

### What's Included:

- 2x CALEX Falerna Wall Lamps
- 1x Remote Control
- USB-C Charging Cable (for each lamp)
- Installation Accessories (magnetic plate, screws, wall plugs)

## 2. SAFETY INFORMATION

To ensure safe operation, always follow these basic safety precautions:

- Do not attempt to open or modify the lamp. Internal components are not user-serviceable.
- Keep the lamp away from extreme temperatures, direct sunlight, and open flames.
- Ensure the charging port is dry before connecting the USB-C cable.
- Use only the provided USB-C cable or a certified equivalent for charging.
- This product is IP44 rated for water resistance, meaning it is protected against splashing water from any direction. It is not designed for submersion.
- Dispose of the product and its battery responsibly according to local regulations.

## 3. PRODUCT OVERVIEW

The CALEX Falerna wall lamp features a modern cubic design, providing warm Up & Down lighting. It is wireless, rechargeable, dimmable, and equipped with a motion sensor for convenience.

## Key Features:

- **Modern Design:** Elegant cubic shape with warm Up & Down light (2700K).
- **Wireless & Rechargeable:** Integrated 2000 mAh battery, charges via USB-C, offering up to 8 hours of autonomy.
- **Motion Sensor:** Detects movement from 2-5 meters within a 90° angle for automatic activation.
- **Waterproof & Robust:** IP44 certified, resistant to rain and humidity, suitable for outdoor use.
- **Quick Installation:** Magnetic plate and included accessories allow for drill-free mounting.

## Components:

Each lamp unit includes:

- LED light source (Up & Down)
- Motion sensor lens
- Power button / Mode selector
- USB-C charging port
- Magnetic mounting plate attachment point

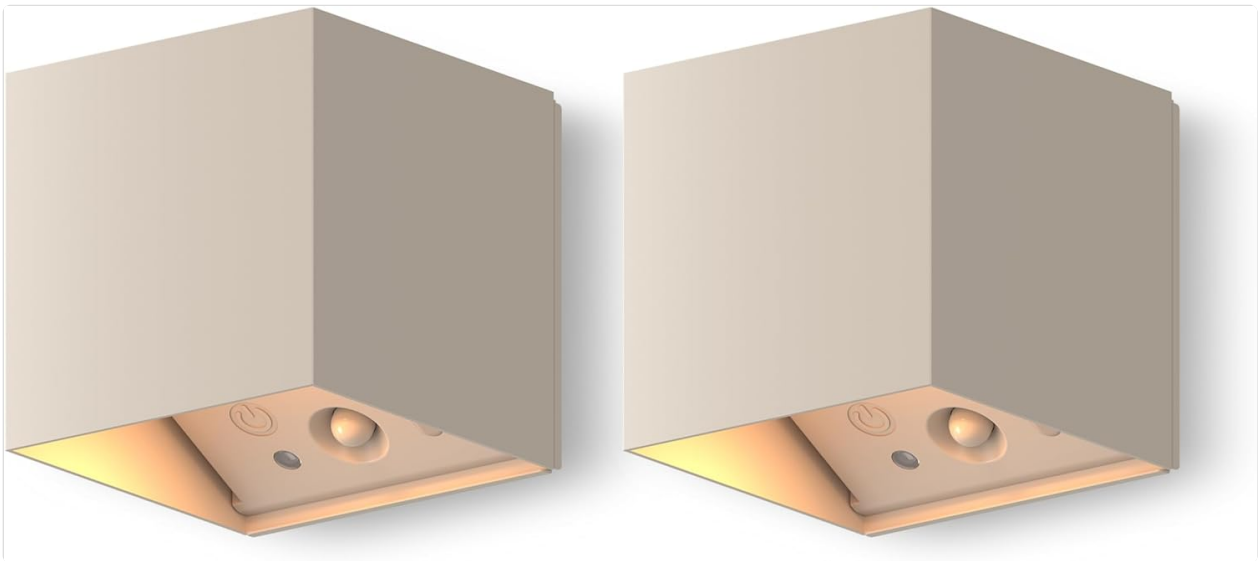


Image 1: Two CALEX Falerna wall lamps. These lamps feature a sand-colored cubic design, emitting warm light both upwards and downwards. The underside of each lamp clearly shows the integrated motion sensor and a power button.

## 4. SETUP & INSTALLATION

The CALEX Falerna lamp is designed for quick and easy installation without the need for drilling, thanks to its magnetic mounting system.

### Installation Steps:

1. **Choose Location:** Select a suitable indoor or outdoor location for your wall lamp. Ensure the surface is clean and dry.
2. **Attach Magnetic Plate:** The lamp comes with a magnetic mounting plate. Peel off the protective backing from the adhesive side of the magnetic plate. Firmly press the plate onto the desired installation surface.

For rough or uneven surfaces, or for a more permanent fixture, use the included screws and wall plugs to secure the plate.

3. **Mount the Lamp:** Align the back of the Falerna lamp with the installed magnetic plate. The lamp will securely attach to the plate.
4. **Adjust Orientation:** Ensure the lamp is oriented correctly for optimal Up & Down light distribution and motion sensor functionality.

**Note:** For outdoor use, ensure the installation surface is robust enough to withstand weather conditions. While the lamp is waterproof (IP44), proper installation helps maintain its longevity.

## 5. CHARGING THE DEVICE

---

The CALEX Falerna lamp is equipped with a built-in rechargeable battery.

### Charging Instructions:

1. **Locate Charging Port:** Find the USB-C charging port on the lamp unit.
2. **Connect Cable:** Insert the small end of the provided USB-C charging cable into the lamp's charging port.
3. **Connect to Power:** Plug the larger end of the USB-C cable into a standard USB power adapter (not included) or a powered USB port.
4. **Charging Indicator:** The lamp will typically show an indicator light during charging (refer to product for specific light behavior).
5. **Full Charge:** A full charge takes approximately 6 hours. Once fully charged, the lamp provides up to 8 hours of continuous operation.
6. **Disconnect:** Once charging is complete, disconnect the USB-C cable from both the lamp and the power source.

**Important:** Ensure the charging port is completely dry before connecting the USB-C cable to prevent damage.

## 6. OPERATING INSTRUCTIONS

---

The CALEX Falerna lamp can be operated using the integrated button on the lamp or the included remote control.

### Using the Lamp Button:

- **Power On/Off:** Press and hold the button for a few seconds to turn the lamp on or off.
- **Cycle Modes:** Short press the button to cycle through different operating modes (e.g., always on, motion sensor mode).

### Using the Remote Control:

The remote control provides more precise control over the lamp's functions.

- **Power Button:** Turns the lamp on or off.
- **Dimming Buttons:** Adjust the brightness level of the light.

- **Motion Sensor Activation:** Activate or deactivate the motion sensor function.
- **Timer Settings:** Set the duration for which the light stays on after motion detection (e.g., 15s, 30s, 60s).

### Motion Sensor Functionality:

When activated, the motion sensor detects movement within a range of 2-5 meters and a 90° angle. The lamp will automatically turn on when motion is detected and turn off after a set period of inactivity (adjustable via remote control).

**Tip:** For optimal motion detection, ensure the sensor is not obstructed and is positioned to cover the desired area.

## 7. MAINTENANCE

Regular maintenance ensures the longevity and optimal performance of your CALEX Falerna lamp.

- **Cleaning:** Wipe the lamp's exterior with a soft, damp cloth. Do not use abrasive cleaners or solvents.
- **Charging Port:** Keep the USB-C charging port free from dust and debris.
- **Battery Care:** To prolong battery life, avoid fully discharging the lamp frequently. Recharge it when the light output becomes noticeably dim. If storing for an extended period, charge the battery to about 50% every few months.
- **Inspection:** Periodically check the lamp and mounting for any signs of wear or damage.

## 8. TROUBLESHOOTING

If you encounter issues with your CALEX Falerna lamp, refer to the following common problems and solutions:

Problem	Possible Cause	Solution
Lamp does not turn on.	Battery is depleted.	Charge the lamp using the USB-C cable.
	Lamp is switched off.	Press the power button on the lamp or remote to turn it on.
Motion sensor not working.	Motion sensor is deactivated.	Activate the motion sensor via the remote control.
	Obstruction in sensor's field of view.	Ensure the sensor lens is clear and unobstructed.
Lamp light is dim.	Low battery.	Recharge the lamp.
	Dimming level set too low.	Increase brightness using the remote control.
Remote control not responding.	Remote battery depleted.	Replace the remote control battery (if applicable, usually a coin cell).

Problem	Possible Cause	Solution
	Out of range or obstruction.	Ensure you are within range and there are no major obstructions between the remote and the lamp.

If the problem persists after trying these solutions, please contact customer support.

## 9. SPECIFICATIONS

Feature	Specification
Brand	CALEX
Model Number	4301005500
Product Dimensions	8 x 8 x 8 cm
Item Weight	725 grams
Number of Items	2 (lamps)
Color	Sand
Material	Aluminum
Voltage	3.7 Volt
Power Source Type	Battery (Rechargeable)
Battery Capacity	2000 mAh
Charging Time	Approx. 6 hours
Operating Autonomy	Up to 8 hours
Bulb Type	LED
Luminous Flux	150 lm
Color Temperature	2700 Kelvin (Warm White)
Ingress Protection (IP) Rating	IP44 (Protected against splashing water)
Indoor/Outdoor Use	Outdoor

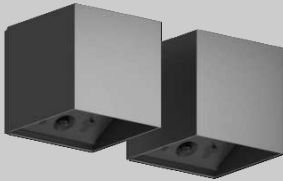
## 10. WARRANTY & SUPPORT

CALEX products are manufactured to high-quality standards. For warranty information, please refer to the terms and conditions provided at the point of purchase or visit the official CALEX website. If you require technical assistance or have questions not covered in this manual, please contact CALEX customer support through their official channels.





**OUTDOOR BATTERY  
RECHARGEABLE  
WALL LAMP  
FALERNA**



**User Manual**

DE Benutzerhandbuch	LT Vartotojo vadovas
BG Пъководство за ползване	LV Lietotāja rokasgrāmata
CZ Uživatelská příručka	NL Gebruikershandleiding
DK Brugervejledning	NO Brukerhåndbok
EE Kasutusjuhend	PL Podręcznik użytkownika
ES Manual del usuario	PT Manual do utilizador
FI Käyttöajan käsikirja	RO Manual de utilizare
FR Manuel d'utilisation	SE Användarmanual
GR Εγχειρίδιο χρήστη	SI Uporabniški priročnik
HR korisnički priručnik	SK Používateľská príručka
HU Felhasználói kézikönyv	TR Kullanıcı Kılavuzu
IT Manuale d'uso	

Art. No. 4301004301 - 4301005400 - 4301005500

[Calex Falerna Outdoor Battery Rechargeable Wall Lamp User Manual](#)

Comprehensive user manual for the Calex Falerna outdoor battery rechargeable wall lamp, covering installation, operation, safety guidelines, and product specifications.

Includes multilingual support.

lang:en score:22 filesize: 2.41 M page\_count: 76 document date: 2025-10-09